



SUNRISE COMMERCE CENTER

Building B | 59,274 SF

2380 Oakmont Drive, Round Rock, TX 78665



[View Virtual Tour](#)

www.idilogistics.com

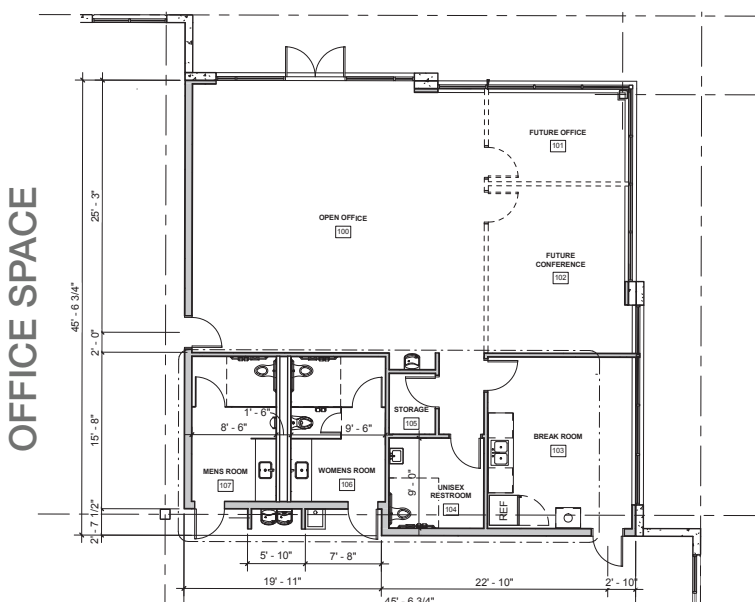
 **IDI Logistics**

up to
59,274 available
square
feet

CLEAR HEIGHT: 32'

DIVISIBLE TO: 25,319 SF

OFFICE AREA: 2,000 SF



Class A Distribution, Warehouse & Manufacturing Space

DOCK DOORS: 18 (9' x 10')

DRIVE-IN DOORS: 2 (14' x 16')

DOCK PACKAGES: 9: 6'x8'
40k lb. levelers

LOADING: Rear-load

COLUMN SPACING: 54' x 50'

DIMENSIONS: 378' x 160'

TRUCK COURT: 130'

AUTO PARKING: 93 spaces

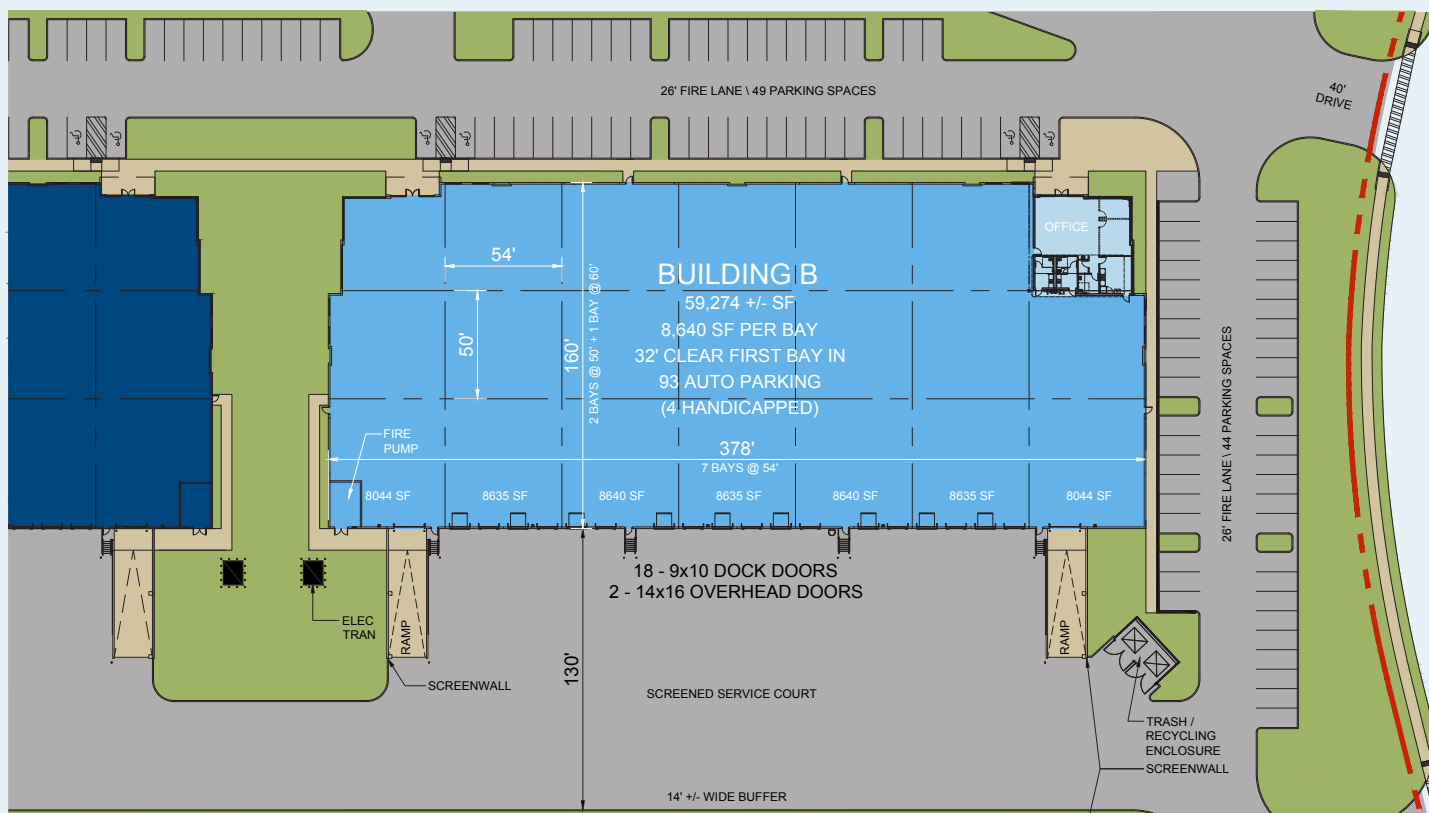
LIGHTING: LED high bay
lights with
motion sensors

FIRE SPRINKLER: ESFR

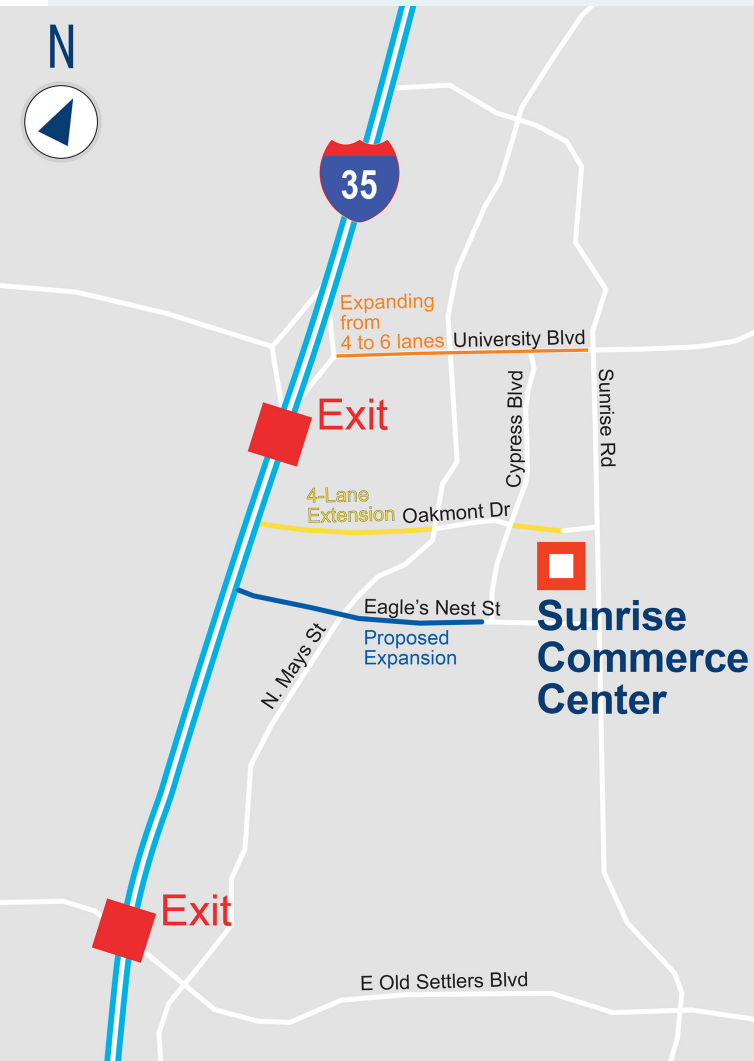
LEED® SILVER CERTIFIED



[View Virtual Tour](#)



DRIVING DISTANCES



METRO AREAS

Downtown Austin	23 miles
San Antonio	117 miles
Houston	170 miles
Dallas	176 miles

MAJOR ROADS

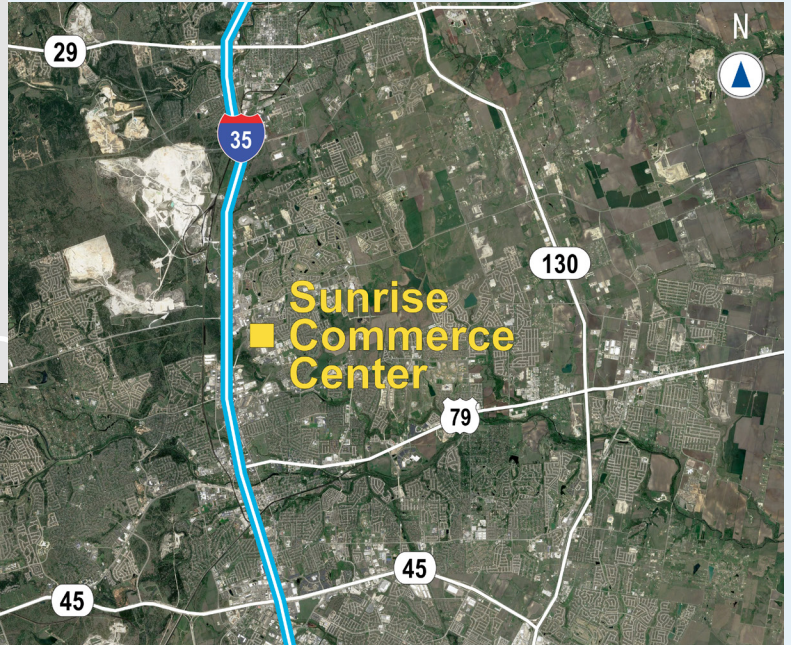
I-35	0.6 miles
Hwy 79	2.6 miles
Hwy 45	6.2 miles
Hwy 130	6.6 miles

AIR

Austin Executive Airport.....	17 miles
Austin Int'l Airport.....	28 miles

POINTS OF INTEREST

Dell World Headquarters.....	13 miles
The Domain.....	14 miles
Samsung Austin Campus.....	15 miles
Univ. of Texas at Austin.....	21 miles



For more information, or to set up a tour, please contact:



Will Nichols
+1.512.413.8563
wnichols@streamrealty.com

Sam Owen
+1.214.356.4433
sowen@streamrealty.com

Luke Watson
+1.806.543.0320
luke.watson@streamrealty.com

Tony Maclin
+1.972.560.7009
tony.maclin@idilogistics.com

www.idilogistics.com

