

FOR SALE

2999 S Hwy 94, Defiance, MO 63341



PROPERTY SUMMARY

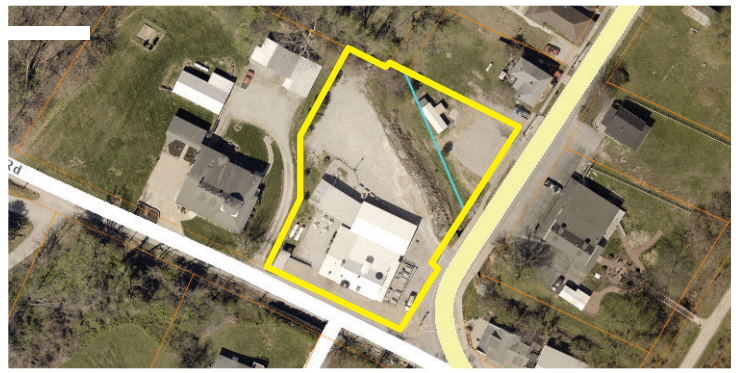
RETAIL / BAR & RESTAURANT

- 4,830 sf Building on .92 Acres
- Complete Bar & Restaurant
- Gateway to Missouri Wine Country
- Scenic 12 minutes from I-64
- Large well equipped kitchen
- Large Cooler and Freezer
- Additional lot for Parking
- Large Pavilion & Entertainment Area
- Large Deck and Covered Porch
- Additional Storage Buildings
- Located in Center of Defiance Business District


• **SALE PRICE: \$950,000.00**

Directions

From I-64 exit onto MO-94 West.
Property on Right in Defiance.



 Listing Agent **Danny Kluesner**

 Cell **314-712-0055**

 **kluesner@shockleycommercial.com**



501 First Capital Dr. Suite 5,
St. Charles MO 63301



Office **636-946-9753**



www.shockleycommercial.com

LISTING PHOTOS

