

FOR LEASE

3,727 SF AVAILABLE

TECHNIPLEX BUSINESS CENTER

16223 PARK ROW DRIVE ▪ SUITE 170 ▪ HOUSTON, TX 77084

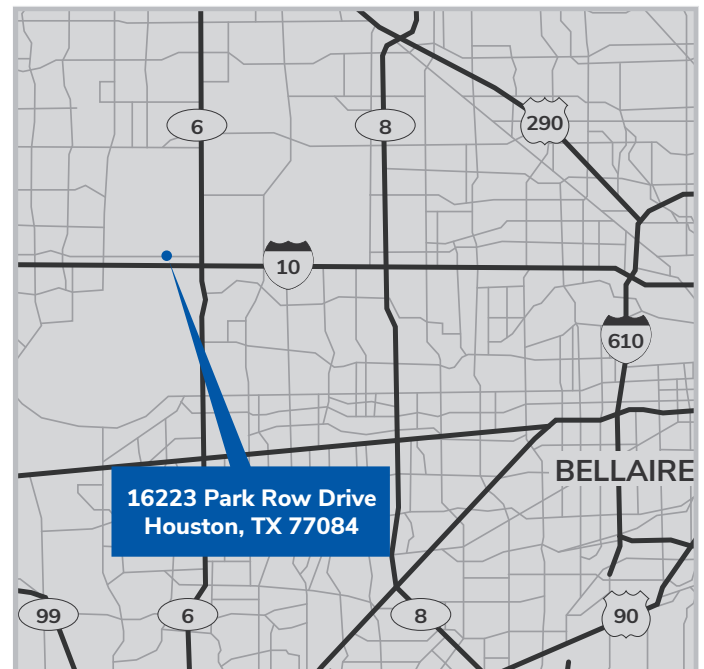


BUILDING FEATURES

- Located in the heart of the Energy Corridor immediately off of Interstate 10 with convenient access to major thoroughfares:
 - Hwy. 6 - 1.3 miles
 - Beltway 8 - 6.5 miles
 - Grand Pkwy 99 - 7.0 miles
- Corporate appeal in a business park setting with a variety of offerings, including, flex, distribution, and lab type spaces.
- 22,695 SF total building size | Rear-load | Dock High loading

SUITE FEATURES

- 3,727 SF total
- 900 SF office
- 2,097 SF lab
- 730 SF warehouse
- 1 loading dock and 1 ramp
- 18' clear height
- Sprinklered



For leasing information, please contact Stream Realty Partners

WILLIAM CARPENTER | 713.300.8891 | william.carpenter@streamrealty.com

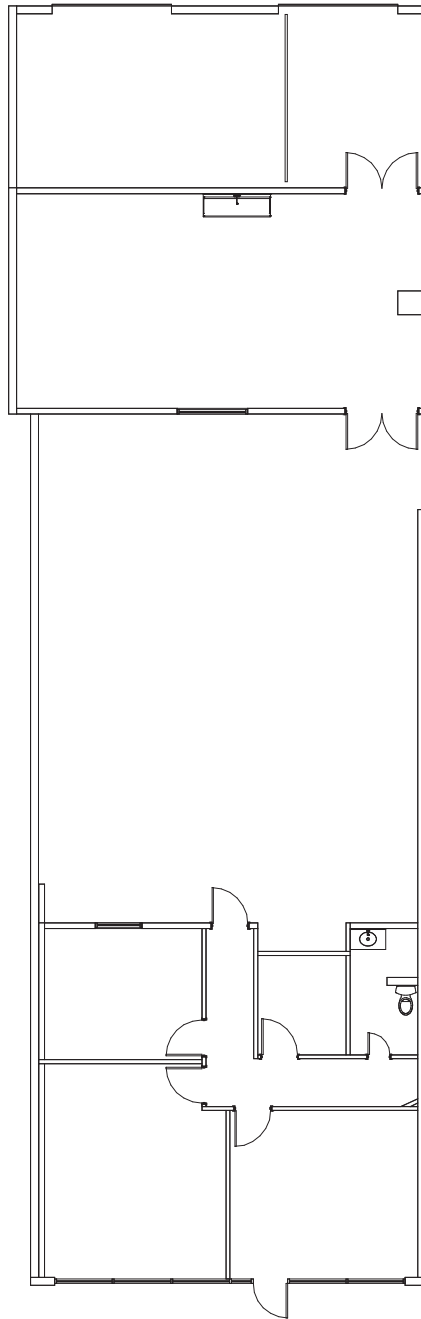
MEG ZSCHAPPEL | 713.300.0284 | meg.zschappel@streamrealty.com

FOR LEASE

3,727 SF AVAILABLE

TECHNIPLEX BUSINESS CENTER

16223 PARK ROW DRIVE ▪ SUITE 170 ▪ HOUSTON, TX 77084



For leasing information, please contact Stream Realty Partners
WILLIAM CARPENTER | 713.300.8891 | william.carpenter@streamrealty.com
MEG ZSCHAPPEL | 713.300.0284 | meg.zschappel@streamrealty.com