



W

WATTERSON
OFFICE PARK

W
WATTERSON TOWER

PROPERTY OVERVIEW

Watterson Office Park is a signature three-building campus conveniently located in suburban Louisville. The park offers several available suite options ranging from 658 square feet to 16,748 square feet.

1930 Bishop Lane
16 floors
16,748 s.f. floorplates

1941 Bishop Lane
10 floors
10,500 s.f. floorplates

1951 Bishop Lane
5 floors
15,520 s.f. floorplates

PREMIUM ACCESS & AMENITIES

- Centralized location provides convenient access to downtown Louisville and surrounding areas
- Minutes to Interstate-264 and Interstate-65
- Prominent visibility from Interstate-264
- Several on-site amenities including a restaurants, sundry shop, tenant lounge / WiFi café and private meeting area

OFFICE PARK HIGHLIGHTS



**RECENTLY UPDATED**
LOBBIES AND ENTRANCE FINISHES

**FIBER CONNECTION**
BETWEEN ALL THREE BUILDINGS

**ABUNDANT**
SURFACE
PARKING

24-HOUR
SECURITY 

**ON-SITE PROPERTY**
MANAGEMENT

**ON-SITE GENERATORS**
FOR TENANT USE

1951
BISHOP LANE

1941
BISHOP LANE

1930
BISHOP LANE



ON-SITE AMENITIES



**COMMON
CONFERENCE
ROOM**



**COMMON
TRAINING
ROOM**



**SEASONAL
ON-SITE FOOD
TRUCKS**





1930 BISHOP LANE

AVAILABILITY

Suite 130: 1,282 S.F.

Suite 600: 16,748 S.F.
(Full Floor)

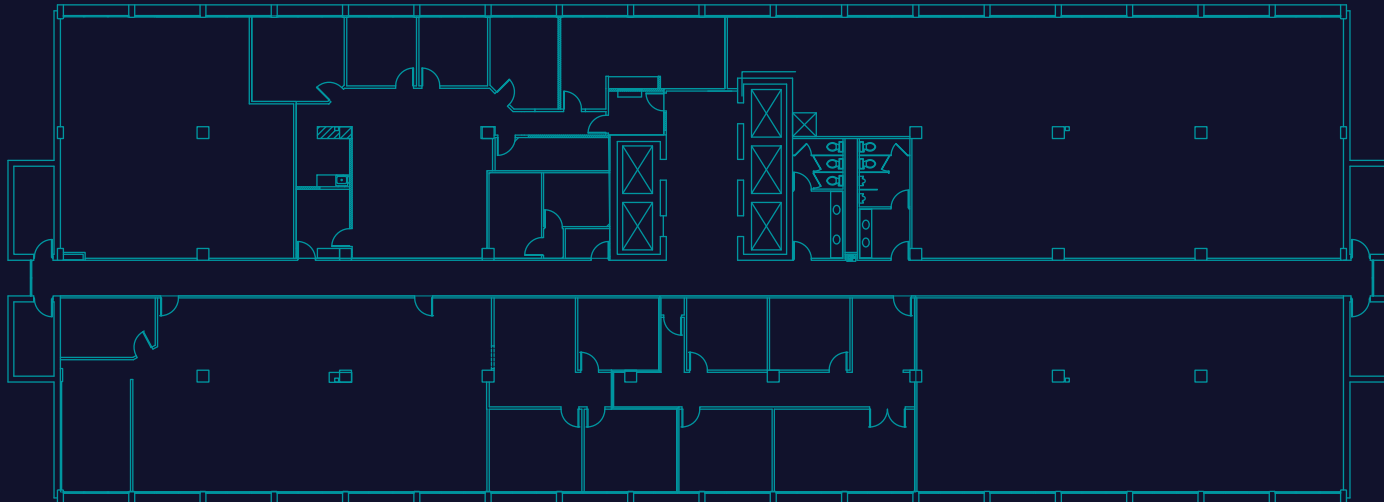
Suite 1005: 2,523 S.F.

Suite 1017: 3,935 S.F.

Suite 1023: 1,726 S.F.

Suite 1100: 16,748 S.F.
(Full Floor Available March 2024)

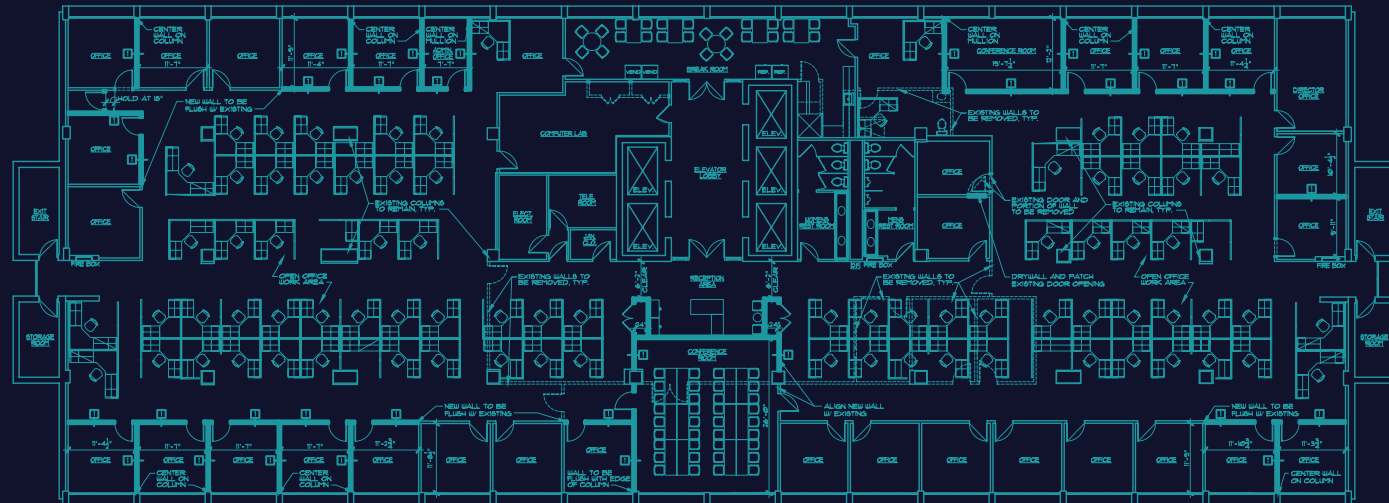
FULL FLOOR AVAILABLE



6th Floor — 16,748 SF



FULL FLOOR AVAILABLE



11th Floor — 16,748 SF

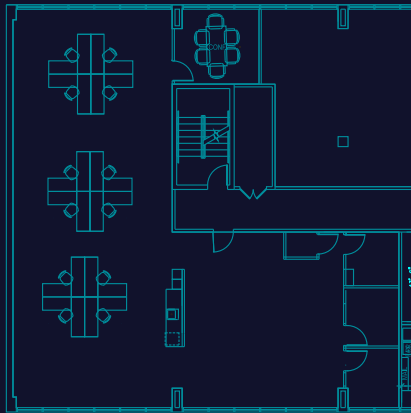
1941 BISHOP LANE

AVAILABILITY

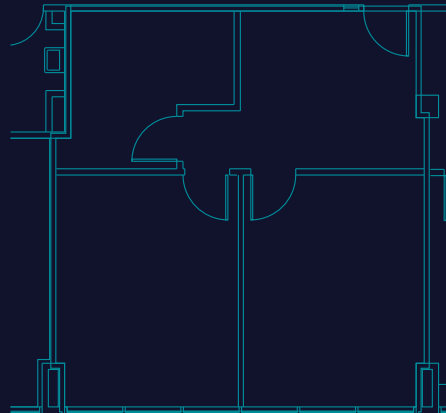
- Suite 401: 2,753 S.F.
- Suite 405: 1,676 S.F.
- Suite 501: 658 S.F.
- Suite 511: 2,369 S.F.
- Suite 600: 10,504 S.F.
(Full Floor)
- Suite 800: 2,298 S.F.
- Suite 802: 542 S.F.
- Suite 804: 2,224 S.F.
- Suite 1004: 2,270 S.F.
- Suite 1017: 1,250 S.F.



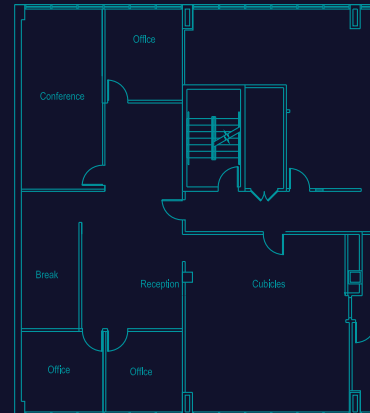
SUITE 401



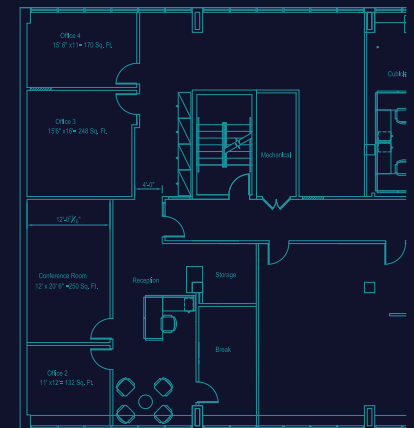
SUITE 501



SUITE 511



SUITE 800





AVAILABILITY

100% Leased

1951
BISHOP
LANE



LOUISVILLE



LOCATION

Watterson Office Park is centrally located within Greater Louisville and provides easy access to major interstates, Louisville Muhammad Ali International Airport and downtown.

TRAVEL DISTANCES

- Louisville Muhammad Ali International Airport 3.9 miles
- University of Louisville 5.2 miles
- Downtown Louisville 7.9 miles



NEARBY AMENITIES



DINING

- 1 Dunkin' Donuts
- 2 Subway
- 3 Yummy Pollo
- 4 Waffle House
- 5 Winston's Restaurant
- 6 The Bakery
- 7 LIFEbar

- 8 El Nopal
- 9 Rally's
- 10 McDonald's
- 11 KFC
- 12 Costco

- 13 Chick-fil-A
- 14 Mi Sueno Restaurant
- 15 Starbucks
- 16 Penn Station East Coast Subs
- 17 Heitzman Bakery
- 18 Popeyes Louisiana Kitchen
- 19 DQ Grill & Chill



WATTERSON OFFICE PARK

For leasing information contact:

Yandell Wood, SIOR
+1 502 394 2518
yandell.wood@jll.com

Doug Owen, SIOR
+1 502 394 2516
doug.owen@jll.com

Although information has been obtained from sources deemed reliable, JLL does not make any guarantees, warranties or representations, express or implied, as to the completeness or accuracy as to the information contained herein. Any projections, opinions, assumptions or estimates used are for example only. There may be differences between projected and actual results, and those differences may be material. JLL does not accept any liability for any loss or damage suffered by any party resulting from reliance on this information. If the recipient of this information has signed a confidentiality agreement with JLL regarding this matter, this information is subject to the terms of that agreement.
©2022. Jones Lang LaSalle IP, Inc. All rights reserved.

