

# 2<sup>ND</sup> Floor 400± SF Office Suite Available For Lease

Located Near Hwy 17 & Camden Ave



**1350 Dell Ave, Campbell, CA**



Meacham/Oppenheimer, Inc.  
8 N San Pedro St. #300  
San Jose, CA 95110  
Tel. 408-378-5900  
[www.moinc.net](http://www.moinc.net)

**BOBBY FACCHINO**  
Senior Associate  
+1 408 318 0623  
[bobby@moinc.net](mailto:bobby@moinc.net)  
Lic. 02178873



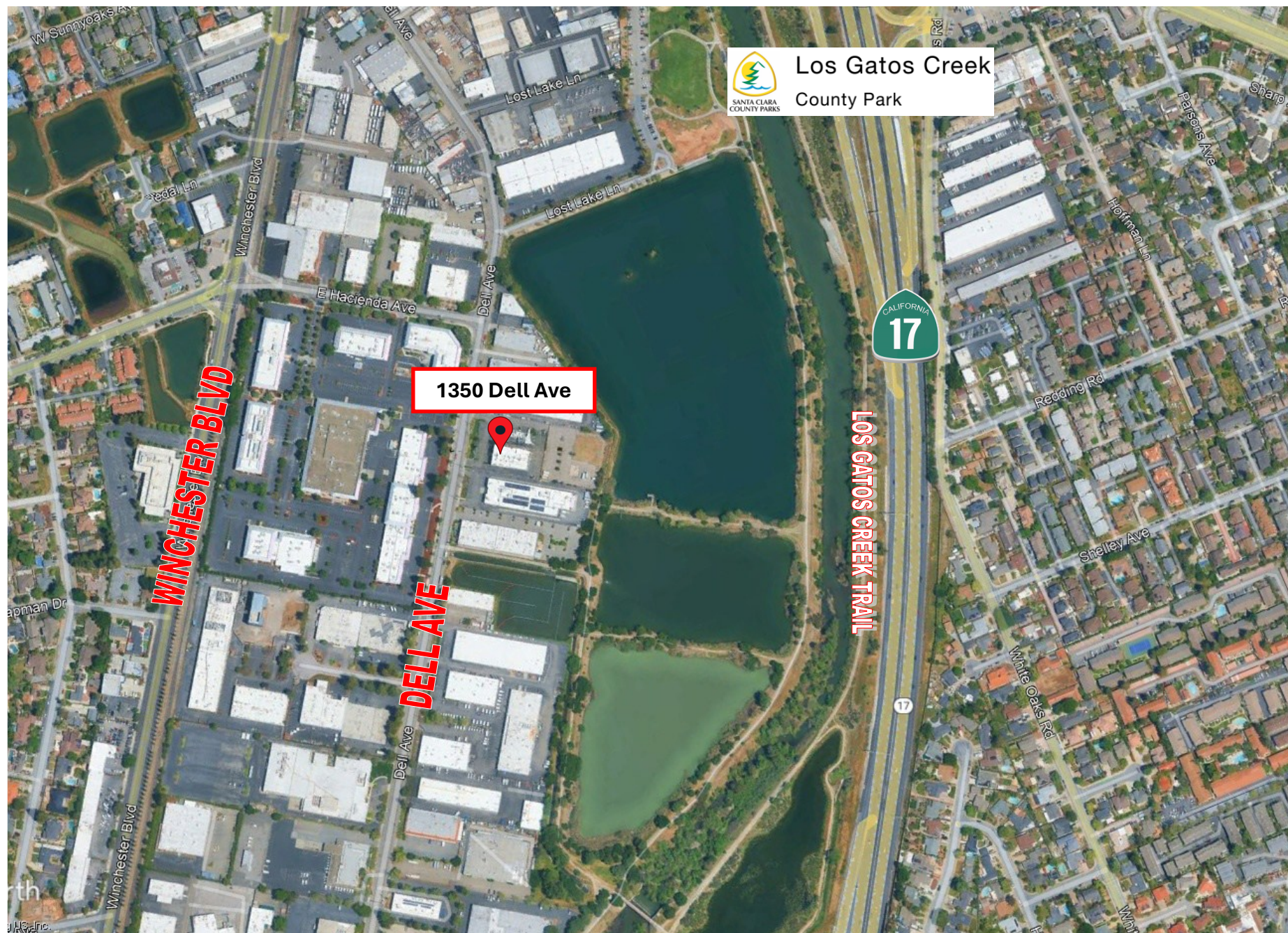


## **400± SF Office Suite Available:**

- Private two room office suite.
- Elevator access to 2<sup>nd</sup> floor
- Shared bathrooms in common area
- Asking rent is \$3.50 PSF Modified Gross

















## SUITE 201: 400± SF





# SIGN PLACEMENT & COURTYARD SPACE





# DEMOGRAPHICS



2025 SUMMARY	1-MILE	3-MILE	5-MILE
Population	21,635	189,101	450,461
Households	8,365	70,270	167,981
Average Household Size	2.56	2.66	2.65
Owner Occupied Housing Units	3,964	40,318	93,581
Renter Occupied Housing Units	4,401	29,952	74,400
Median Age	40.1	41.8	41.5
Median Household Income	\$164,976	\$173,382	\$171,159
Average Household Income	\$225,867	\$246,031	\$243,792



# 1350 Dell Ave, Campbell CA



MEACHAM/OPPENHEIMER, INC.  
8 N SAN PEDRO ST. #300  
SAN JOSE, CA 95110  
TEL. 408.378.5900  
Www.moinc.net

**Bobby Facchino**

Senior Associate  
Lic. #02178873  
bobby@moinc.net  
(408) 318-0623