

1171-1245 CHICAGO ROAD
TROY, MICHIGAN

INDUSTRIAL FOR LEASE
2,520 Square Feet Available



**SIGNATURE
ASSOCIATES**
KNOW SIGNATURE | KNOW RESULTS

COMMERCE VILLAGE



PROPERTY FEATURES

- 2,520 square feet available
- 16' clear height
- (1) 12' x 12' grade level door
- Zoned Light Industrial
- Very clean and ready for immediate occupancy
- Various office layouts
- High speed internet is available
- Quick access to I-75 at 14 Mile/Oakland Mall
- Triple net expenses are \$2.25/sq. ft.
- Lease Rate: \$10.50/sq.ft. NNN



For more information, please contact:

KRIS PAWLOWSKI
(248) 359 3801
kpawlowski@signatureassociates.com

SIGNATURE ASSOCIATES
One Towne Square, Suite 1200
Southfield, MI 48076
www.signatureassociates.com

1171-1245 Chicago Road - Troy, Michigan

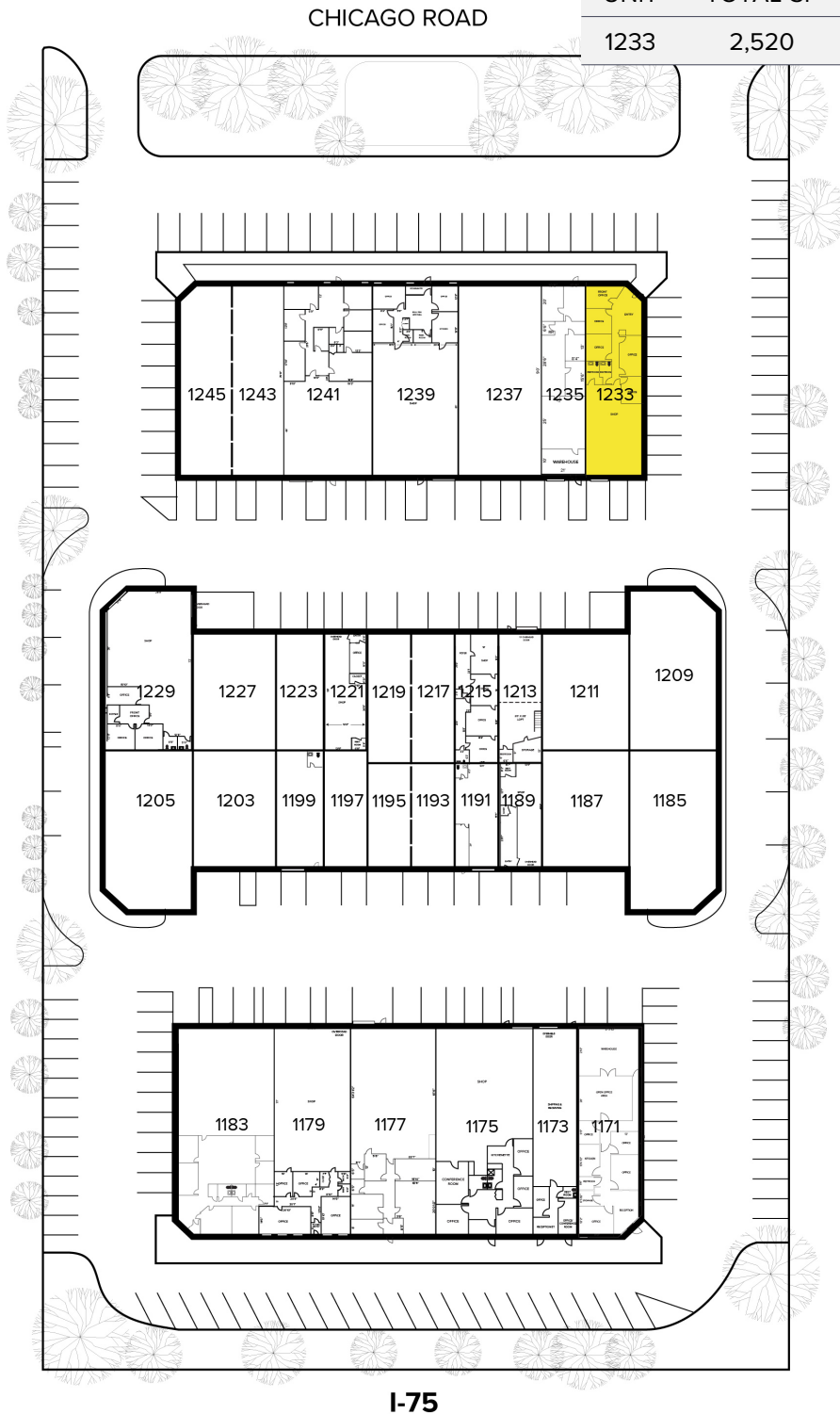
Industrial For Lease

2,520
Square Feet
AVAILABLE

Site Plan

AVAILABILITY

UNIT	TOTAL SF	OFFICE SF	RATE
1233	2,520	1,300	\$10.50 G



For more information, please contact:

KRIS PAWLOWSKI
(248) 359 3801
kpawlowski@signatureassociates.com

SIGNATURE ASSOCIATES
One Towne Square, Suite 1200
Southfield, MI 48076
www.signatureassociates.com

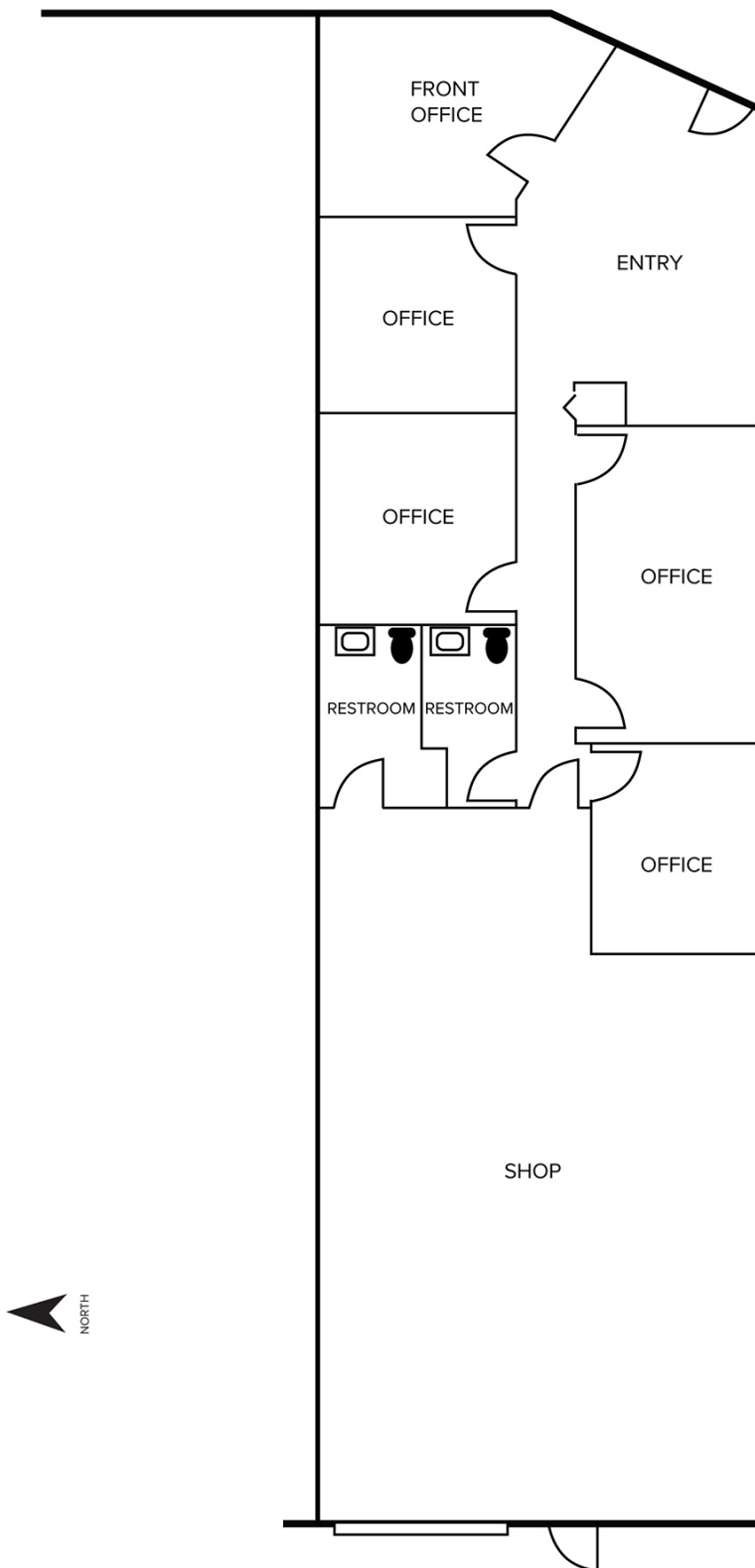
1171-1245 Chicago Road - Troy, Michigan

Industrial For Lease

2,520
Square Feet
AVAILABLE

Floor Plan

AVAILABILITY			
UNIT	TOTAL SF	OFFICE SF	RATE
1233	2,520	1,300	\$10.50 G



For more information, please contact:

KRIS PAWLOWSKI
(248) 359 3801
kpawlowski@signatureassociates.com

SIGNATURE ASSOCIATES
One Towne Square, Suite 1200
Southfield, MI 48076
www.signatureassociates.com

1171-1245 Chicago Road - Troy, Michigan

Industrial For Lease

2,520
Square Feet
AVAILABLE

Interior Photo Unit 1233



For more information, please contact:

KRIS PAWLOWSKI
(248) 359 3801
kpawlowski@signatureassociates.com

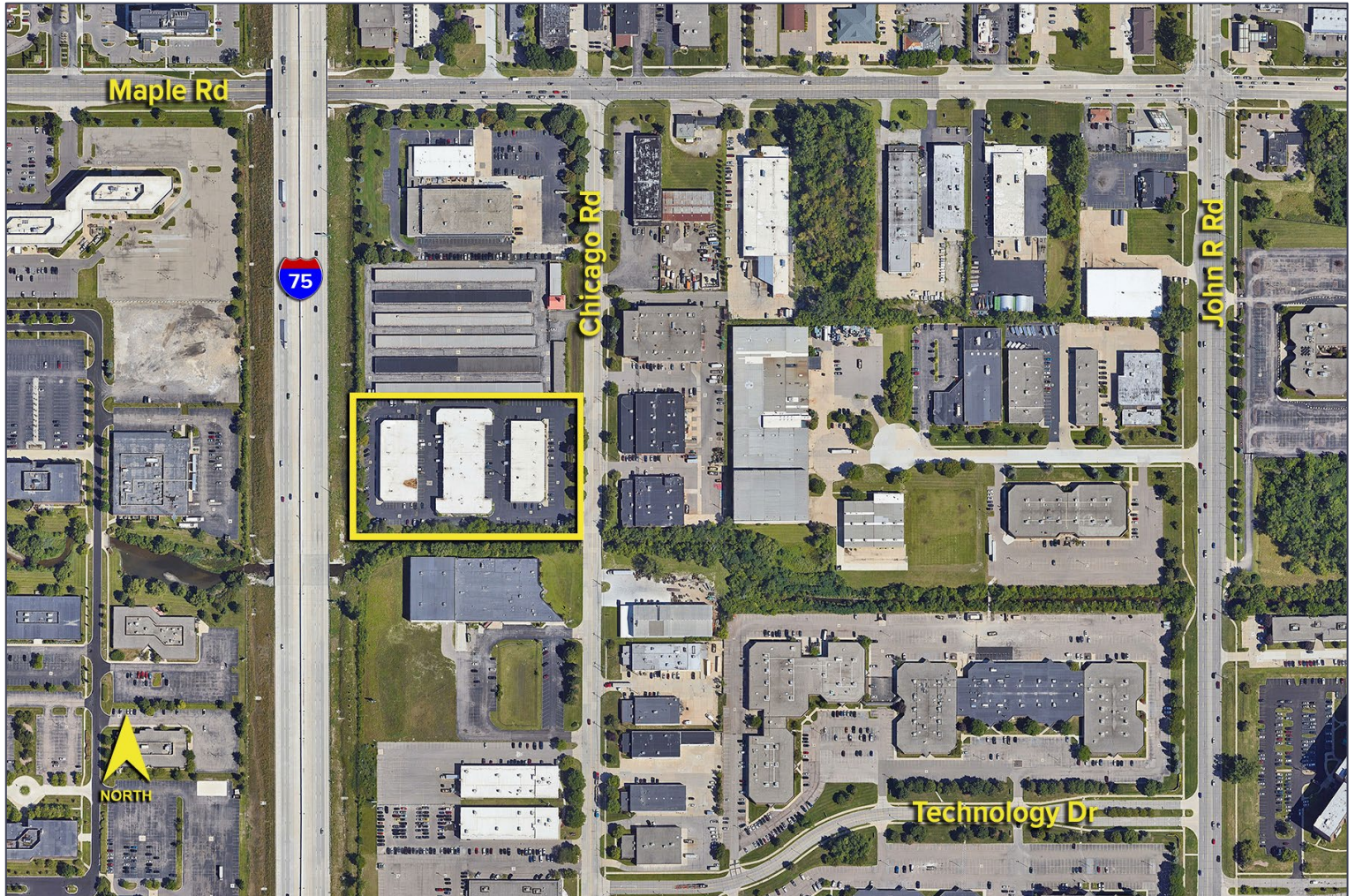
SIGNATURE ASSOCIATES
One Towne Square, Suite 1200
Southfield, MI 48076
www.signatureassociates.com

1171-1245 Chicago Road - Troy, Michigan

Industrial For Lease

2,520
Square Feet
AVAILABLE

Aerial



For more information, please contact:

KRIS PAWLOWSKI
(248) 359 3801
kpawlowski@signatureassociates.com

SIGNATURE ASSOCIATES
One Towne Square, Suite 1200
Southfield, MI 48076
www.signatureassociates.com