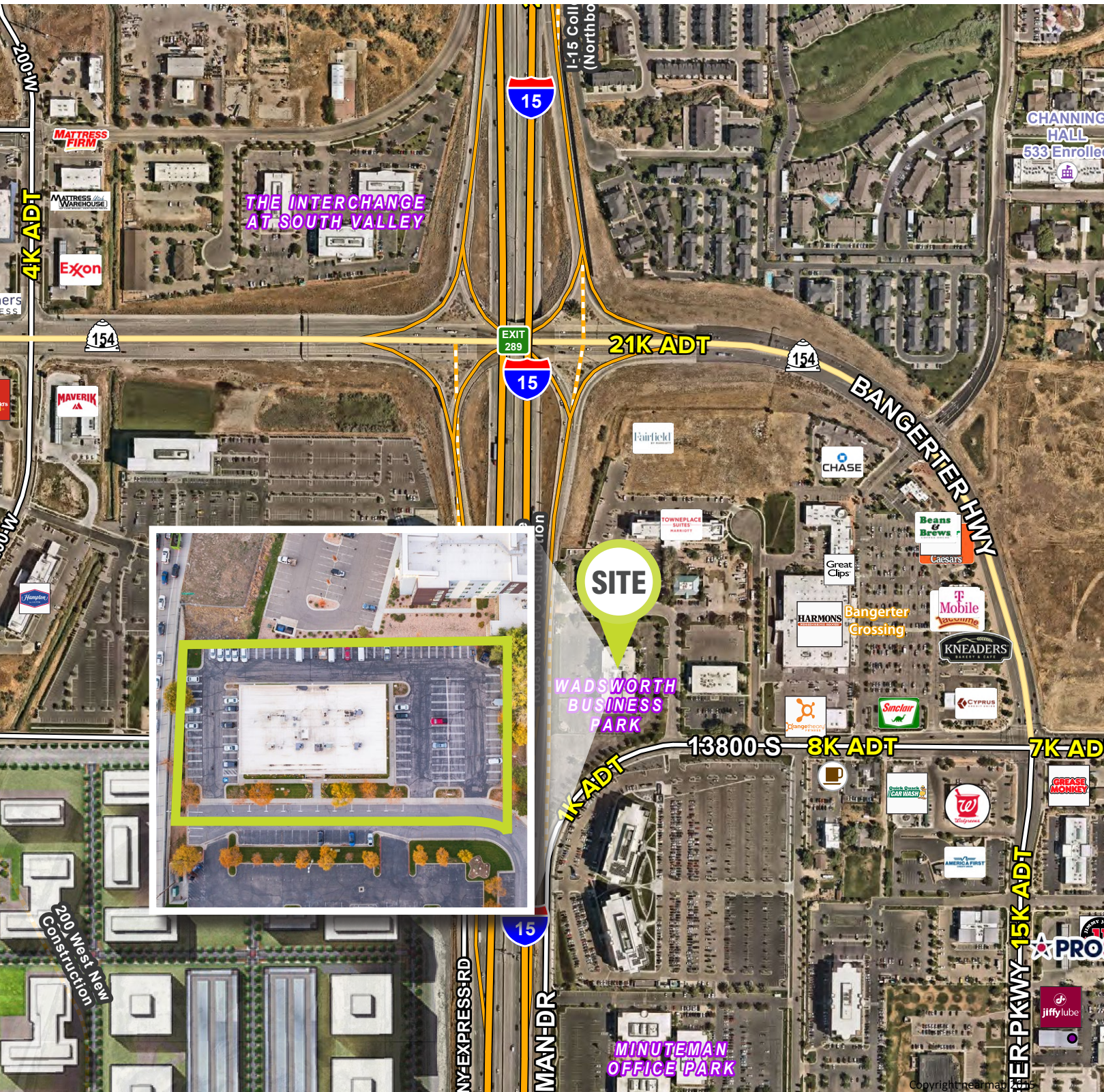


65 EAST WADSWORTH OFFICE

65 East Wadsworth Park Drive | Draper, UT 84020

65 EAST WADSWORTH OFFICE

65 East Wadsworth Park Drive | Draper, UT 84020



FOR LEASE

\$24.00 PSF/Month Full Service
Tenant Improvements Available

Suite 110

- Total: 3,502 SF
- Six (6) Offices
- Reception/Bullpen Area
- Conference Room

Suite 207

- Total: 2,477 SF
- Seven (7) Private Offices
- Breakroom
- Conference Room
- IT Room

Property Highlights

- Total building: 27,755 SF -14,960 Floor Plates
- 2 Story Office Building
- Restrooms: In-Common on each floor
- Elevator Access
- Ceiling Height: 14' Exposed Ceilings
- Independent Central Air in Each Suite
- Parking: 113 Spaces - Ratio: 4/1000
- Fiber Optic Access to: CenturyLink, Xfinity, Allstream
- Signage: Monument and Crown Signage Available
- Secure FOB Access for After Hours for the Building
- Zone: C-0 (Professional Office)
- Built in 1996
- Freeway Visibility off I-15
- Access: quick access to I-15, and Bangerter Hwy
- Amenities: Bangerter Crossing within 5 minute walk, Minutes drive to "The Point Utah" Development 600 Acres of Retail, Office, Multifamily, and Residential.

Contact

ARTIE LUCERO

Senior Associate
m 801.608.4909
alucero@legendcommercial.com

SKYLER PETERSON, SIOR

Executive Vice President
m 801.656.7354
speterson@legendcommercial.com

TRE BOURDEAUX, SIOR

Vice President
m 801.824.0397
tbourdeaux@legendcommercial.com

LEGEND
PARTNERS

801.930.6750 | www.legendllp.com
2180 S 1300 E, Suite 240 | Salt Lake City, UT 84106

Contact

ARTIE LUCERO

Senior Associate
m 801.608.4909
alucero@legendcommercial.com

SKYLER PETERSON, SIOR

Executive Vice President
m 801.656.7354
speterson@legendcommercial.com

TRE BOURDEAUX, SIOR

Vice President
m 801.824.0397
tbourdeaux@legendcommercial.com

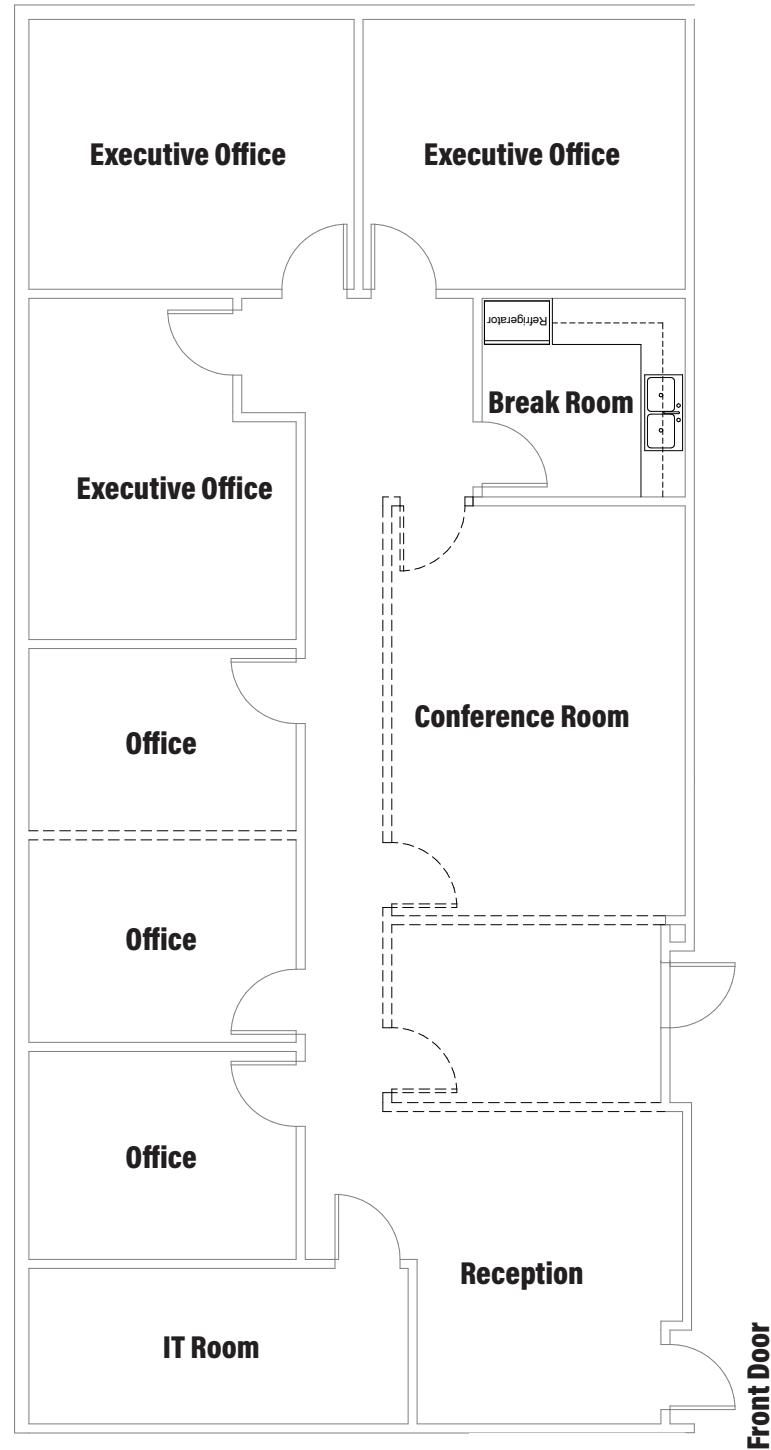
LEGEND
PARTNERS

801.930.6750 | www.legendllp.com
2180 S 1300 E, Suite 240 | Salt Lake City, UT 84106

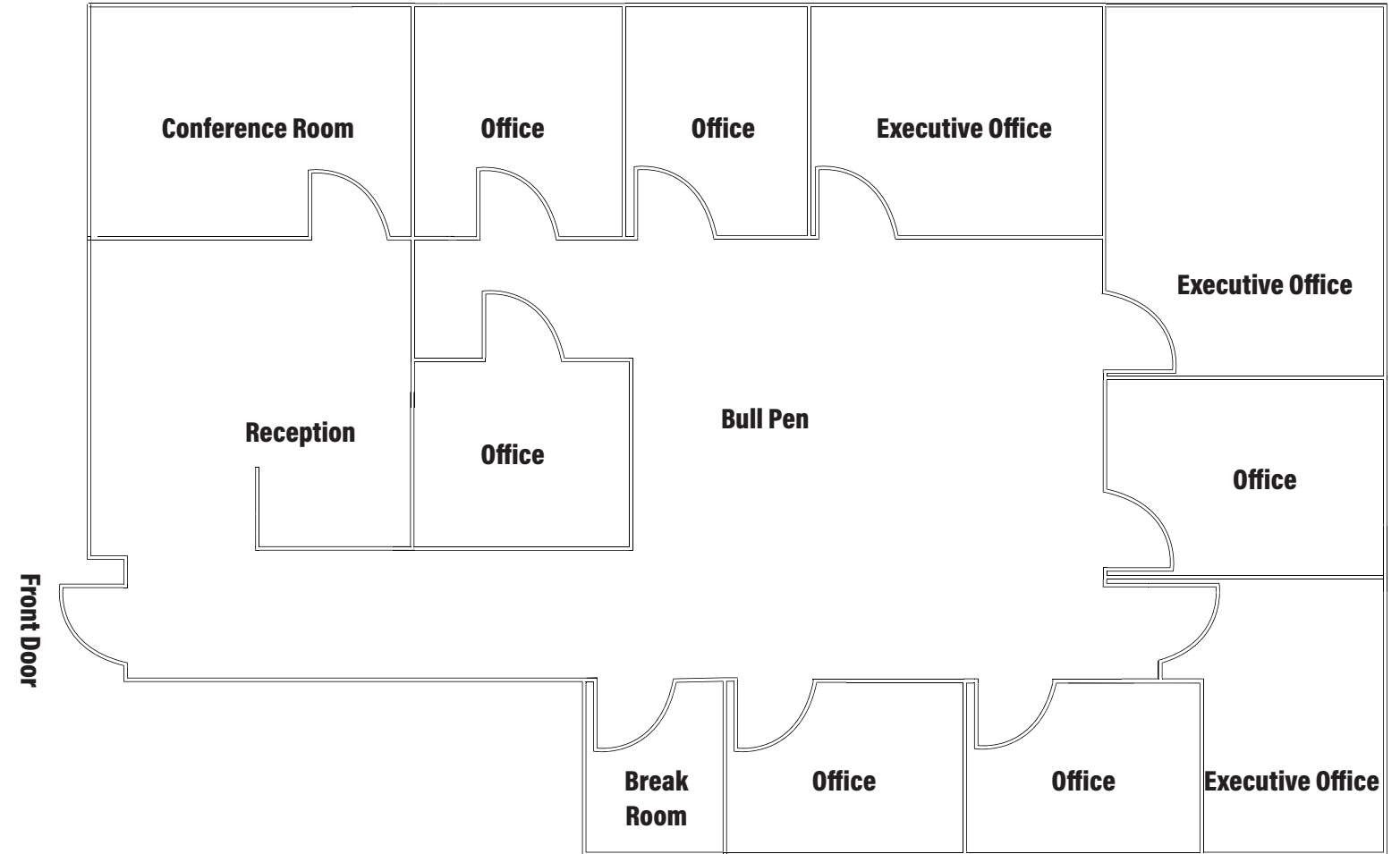
65 EAST WADSWORTH OFFICE

65 East Wadsworth Park Drive | Draper, UT 84020

Suite 207



Suite 110



Contact

ARTIE LUCERO

Senior Associate
m 801.608.4909
alucero@legendcommercial.com

SKYLER PETERSON, SIOR

Executive Vice President
m 801.656.7354
speterson@legendcommercial.com

TRE BOURDEAUX, SIOR

Vice President
m 801.824.0397
tbourdeaux@legendcommercial.com



Contact

ARTIE LUCERO

Senior Associate
m 801.608.4909
alucero@legendcommercial.com

SKYLER PETERSON, SIOR

Executive Vice President
m 801.656.7354
speterson@legendcommercial.com

TRE BOURDEAUX, SIOR

Vice President
m 801.824.0397
tbourdeaux@legendcommercial.com

