

# For Lease

## Office Space

7007 Mission Gorge Rd



### **Craig Evanco, CPM®**

President/ CEO

Mobile: (619) 814-1688

[craig@evancorealty.com](mailto:craig@evancorealty.com)

CA Lic #01916800

### **Joseph C. Altman, CPM®**

Executive Vice President

Mobile: (619) 814-1681

[joe@evancorealty.com](mailto:joe@evancorealty.com)

CA Lic #00461801

### **Evanco Realty Advisors**

3150 Rosecrans St Ste 200

San Diego, CA 92110

[evancorealty.com](http://evancorealty.com)



**EVANCO**  
REALTY ADVISORS, INC.  
PROPERTY MANAGEMENT SERVICES



# Offering Summary

<b>Space Available</b>	4,500 SF
<b>Price per SF</b>	\$1.70 (Gross) + Electrical
<b>Year Built</b>	1990
<b>Zoning</b>	Office & Industrial (IL-2-1)
<b>County</b>	San Diego

## Property Highlights

- Close proximity to I-8 and I-15 highways
- Excellent street exposure with high visibility signage
- Centrally located in the heart of San Diego on a high traffic road
- Ample parking in front and behind building
- Available immediately

## Mission Trails Industrial Park

7007 Mission Gorge Rd

San Diego, CA 92120



### Craig Evanco, CPM®

President/ CEO  
Mobile: (619) 814-1688  
craig@evancorealty.com  
CA Lic #01916800

### Joseph C. Altman, CPM®

Executive Vice President  
Mobile: (619) 814-1681  
joe@evancorealty.com  
CA Lic #00461801

### Evanco Realty Advisors

3150 Rosecrans St Ste 200  
San Diego, CA 92110  
[evancorealty.com](http://evancorealty.com)

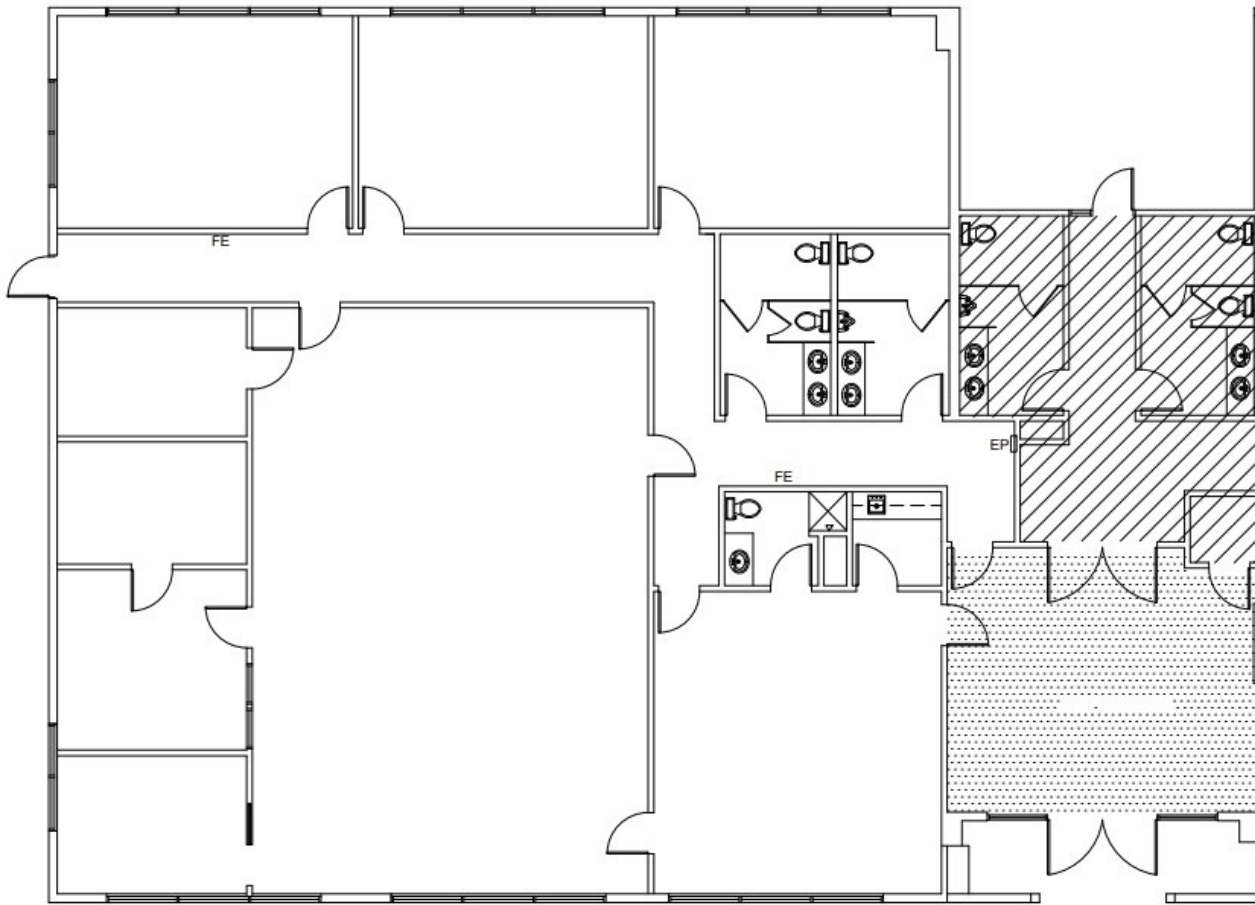


**EVANCO**  
REALTY ADVISORS, INC.  
PROPERTY MANAGEMENT SERVICES

## Mission Trails Industrial Park

7007 Mission Gorge Rd

San Diego, CA 92120



7007 MISSION GORGE RD., SECOND FLOOR SOUTH

### Craig Evanco, CPM®

President/ CEO

Mobile: (619) 814-1688

craig@evancorealty.com

CA Lic #01916800

### Joseph C. Altman, CPM®

Executive Vice President

Mobile: (619) 814-1681

joe@evancorealty.com

CA Lic #00461801

### Evanco Realty Advisors

3150 Rosecrans St Ste 200

San Diego, CA 92110

[evancorealty.com](http://evancorealty.com)



**EVANCO**  
REALTY ADVISORS, INC.  
PROPERTY MANAGEMENT SERVICES