



## NEARBY TENANTS



WELSPUN USA



## PROPERTY HIGHLIGHTS

- Strong Traffic counts with 48,319 on US 58 and 23,269 on Pruden Blvd
- Retail pads in front of 5 million SF industrial development
- Pruden Blvd to be improved to 6 lanes - projected AADT to increase to 40,000
- Full interchange with potential for highway signage
- Convenient access to I-95 and Norfolk/Va Beach

**JOHN MEYER**

jmeyer@klnb.com | 443-632-2052

**BOB BROWNING**

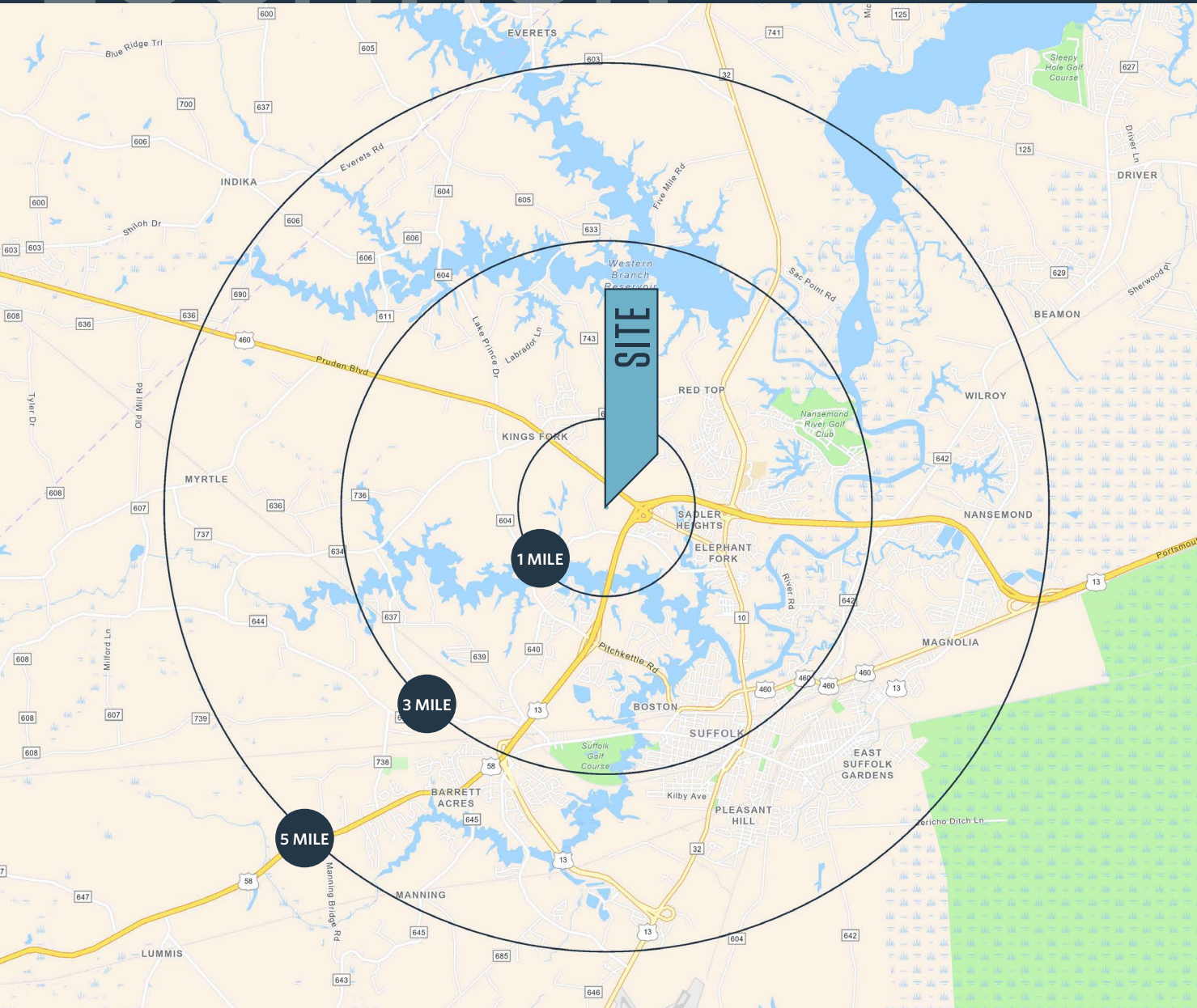
bbrowning@klnb.com | 703-268-2717



# LOCATION

# PORT 460

2925 PRUDEN BOULEVARD, SUFFOLK, VA 23434



## DEMOGRAPHICS | 2023:

1-MILE	3-MILE	5-MILE
Population		
1,443	20,981	48,175
Daytime Population		
1,509	22,165	45,870
Households		
517	7,776	18,165
Average HH Income		
\$137,815	\$120,916	\$97,894

[CLICK TO DOWNLOAD DEMOGRAPHIC REPORT](#)

## TRAFFIC COUNTS | 2022:

Pruden Blvd	23,269 ADT
Route 58	48,319 ADT

**JOHN MEYER**

jmeyer@klnb.com | 443-632-2052

**BOB BROWNING**

bbrowning@klnb.com | 703-268-2717





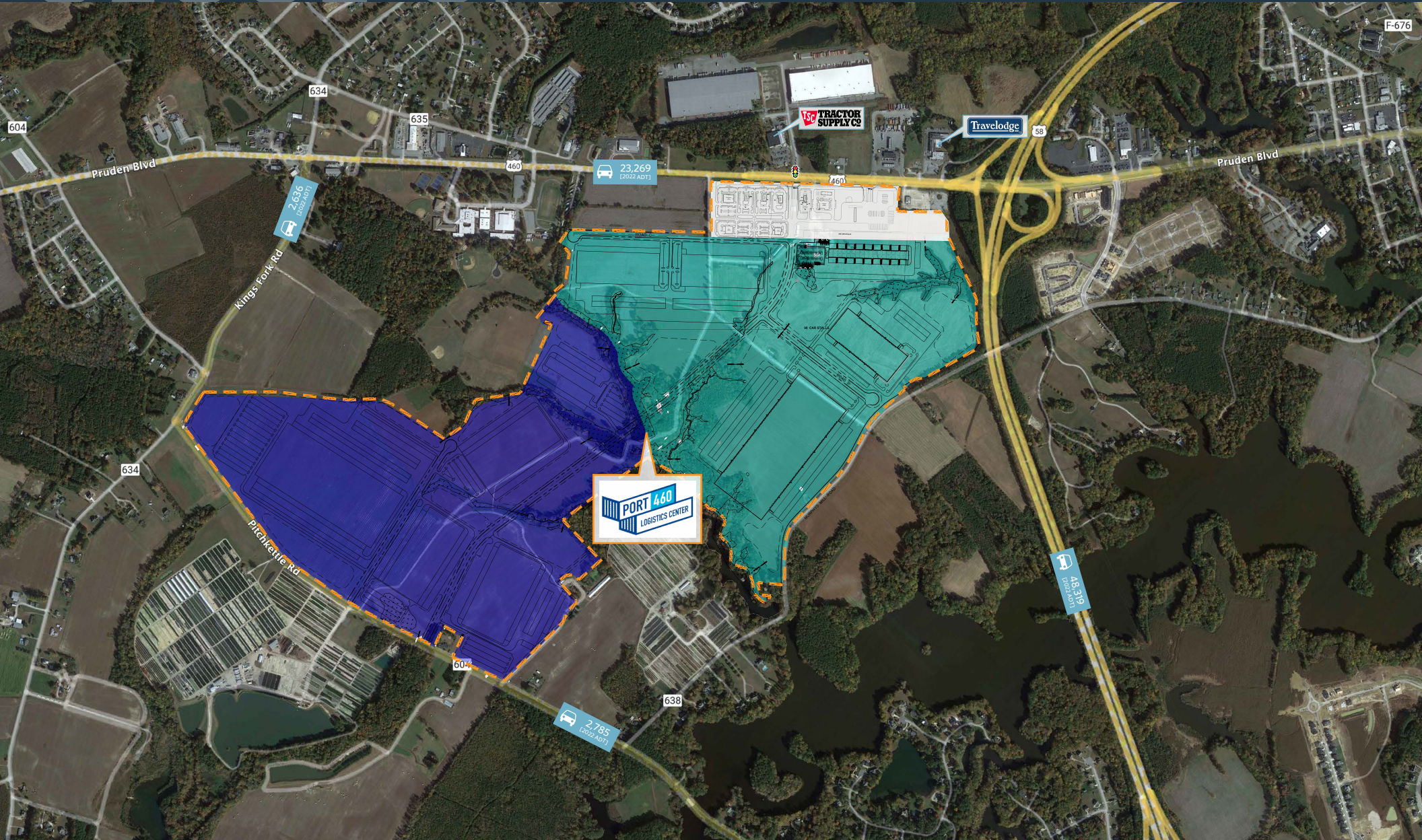




# CLOSE UP

## PORT 460

2925 PRUDEN BOULEVARD, SUFFOLK, VA 23434



**JOHN MEYER**

[jmeyer@klnb.com](mailto:jmeyer@klnb.com) | 443-632-2052

**BOB BROWNING**

[bbrowning@klnb.com](mailto:bbrowning@klnb.com) | 703-268-2717





# CLOSE UP

## PORT 460

2925 PRUDEN BOULEVARD, SUFFOLK, VA 23434



**JOHN MEYER**

[jmeyer@klnb.com](mailto:jmeyer@klnb.com) | 443-632-2052

**BOB BROWNING**

[bbrowning@klnb.com](mailto:bbrowning@klnb.com) | 703-268-2717

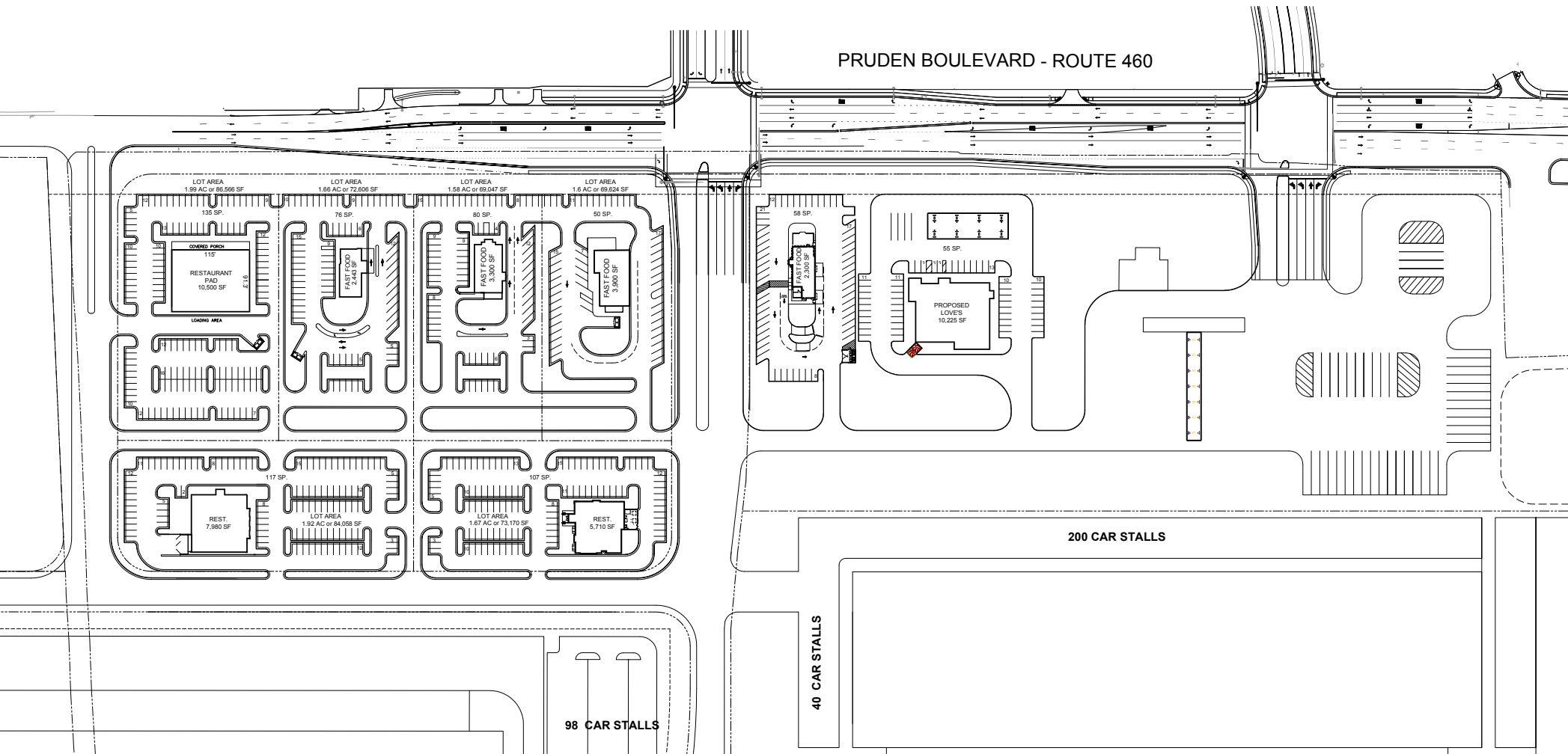




# SITE PLAN

# PORT 460

2925 PRUDEN BOULEVARD, SUFFOLK, VA 23434



**JOHN MEYER**

jmeyer@klnb.com | 443-632-2052

**BOB BROWNING**

bbrowning@klnb.com | 703-268-2717





## FOR MORE INFORMATION, PLEASE CONTACT:

### JOHN MEYER

[jmeyer@klnb.com](mailto:jmeyer@klnb.com)  
443-632-2052

### BOB BROWNING

[bbrowning@klnb.com](mailto:bbrowning@klnb.com)  
703-268-2717

100 West Road, Suite 505, Towson, MD 21204

.....

## klnb.com



[instagram.com/klnbcre](https://www.instagram.com/klnbcre)



[linkedin.com/company/klnb](https://www.linkedin.com/company/klnb)



[facebook.com/KLNBCRE](https://www.facebook.com/KLNBCRE)

[CLICK TO VIEW PROPERTY WEBSITE](#)