

# UNIVERSITY OAKS SHOPPING CENTER

10000-10042 University Blvd | Orlando, FL 32817

Retail Property For Lease



**LQ Commercial**  
REAL ESTATE SERVICES

**LQCRE.COM**



**CALL FOR  
RATES**

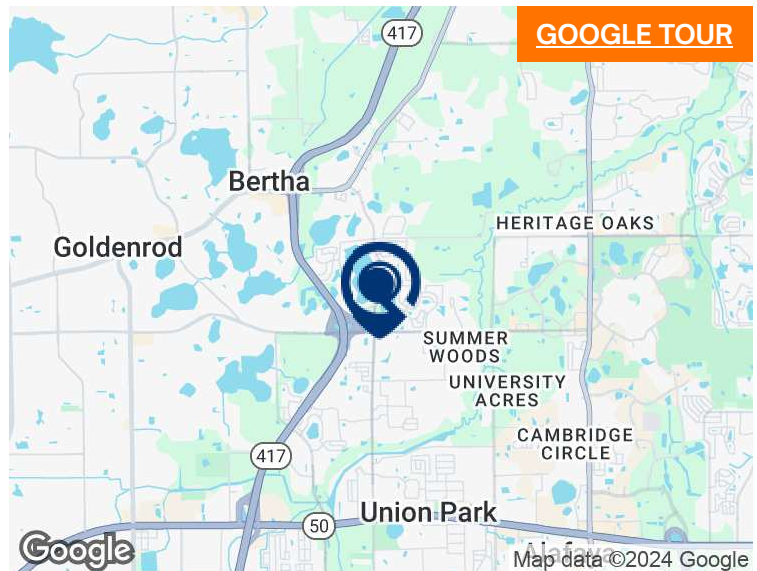


**1,250 - 2,600  
SF**



**2ND GEN  
RESTAURANT**

- 2nd gen restaurant space available on University Blvd - 2,600 SF.
- Located 2 miles from the University of Central Florida (UCF).
- Neighboring retailers include Publix, Walgreens, Advance Auto Parts, and more.
- Positioned at the heavily traveled intersection of University Blvd and Dean Road (70,000 VPD combined).
- Adjacent to the on and off ramps of SR 417 (108,000 VPD)
- Surrounded by dense residential neighborhoods and multi-family communities.



[PROPERTIES.LQCRE.COM/UNIVERSITY-OAKS](https://properties.lqcre.com/university-oaks)



**5-MILE TOTAL POPULATION  
278,362**



**5-YR POP. INCREASE  
1.0%**



**5-MILE AVE HH INCOME  
\$105,683**



**LQ Commercial**  
REAL ESTATE SERVICES

500 Winderley Pl #104  
Maitland, FL 32751  
**LQCRE.COM**

**Julia Sosa**

Founding Principal - Orlando  
D: 407.660.7500 x308  
C: 407.257.8246  
[jsosa@lqcre.com](mailto:jsosa@lqcre.com)

**Eva Royal**

Principal, Senior Associate  
D: 407.660.7500 x314  
C: 407.421.3532  
[eroyal@lqcre.com](mailto:eroyal@lqcre.com)

Information obtained from owner(s) or other sources deemed reliable. We have no reason to doubt its accuracy, but cannot guarantee it. All properties subject to change or withdrawal without notice.



# UNIVERSITY OAKS SHOPPING CENTER

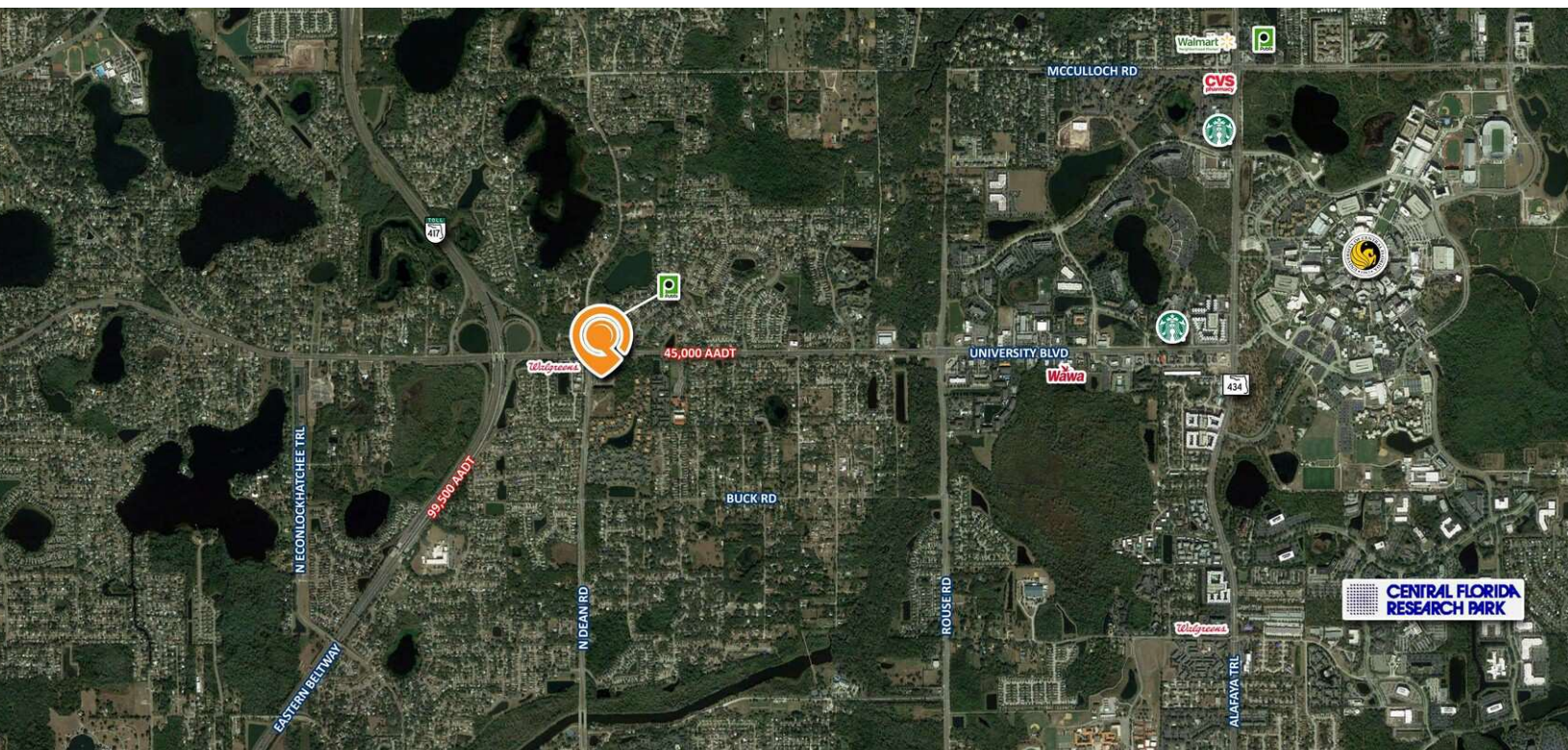
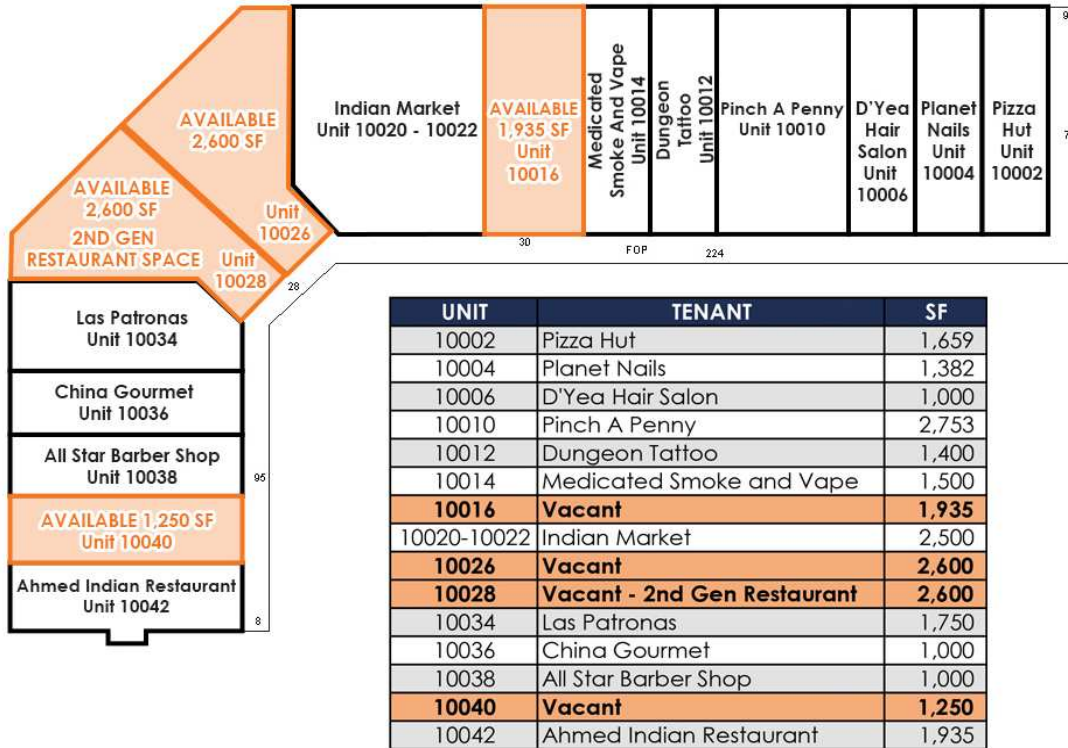
10000-10042 University Blvd | Orlando, FL 32817

Retail Property For Lease



**LQ Commercial**  
REAL ESTATE SERVICES

**LQCRE.COM**



**LQ Commercial**  
REAL ESTATE SERVICES  
500 Winderley Pl #104  
Maitland, FL 32751  
**LQCRE.COM**

**Julia Sosa**  
Founding Principal - Orlando  
D: 407.660.7500 x308  
C: 407.257.8246  
[jsosa@lqcre.com](mailto:jsosa@lqcre.com)

**Eva Royal**  
Principal, Senior Associate  
D: 407.660.7500 x314  
C: 407.421.3532  
[eroyal@lqcre.com](mailto:eroyal@lqcre.com)

Information obtained from owner(s) or other sources deemed reliable. We have no reason to doubt its accuracy, but cannot guarantee it. All properties subject to change or withdrawal without notice.