

815
East 135th Street

PORT MORRIS
BRONX, NY

BLOCK-THROUGH
INDUSTRIAL BUILDING
FOR LEASE



LEVIATHAN LEASING

815 E 135th Street is a block-through industrial property in the highly desirable Port Morris sector of the south Bronx. The space features 2 drive-in loading docks, 23-19 ft ceilings, heavy power and a freight elevator connecting the ground to 2nd Floor. The property has undergone upgrades including roofing, fire sprinklers, new electrical + LED lighting, structural support and more. Please reach out for video walkthrough

APPROX. SIZE

Ground: 8,500 SF
2nd FL: 3,800 SF
Mezz: 850 SF

CEILING

Ground: 23ft
2nd FL: 13ft

TERM

Negotiable

POSSESSION

Immediate

APPROX. DIMENSIONS

100 ft X 200 ft

HIGHLIGHTS

- 2 story with mezz with office property
- New elevator 9x9x7 (10,000lbs)
- Heavy power
- 6 industrial heaters in-place
- Great column spacing(22ft min)
- New electrical and LED lighting

TRANSPORTATION & DISTANCE

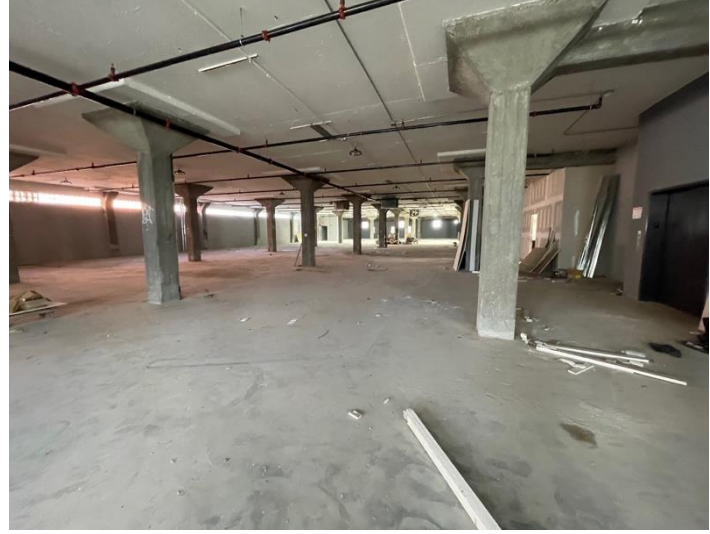
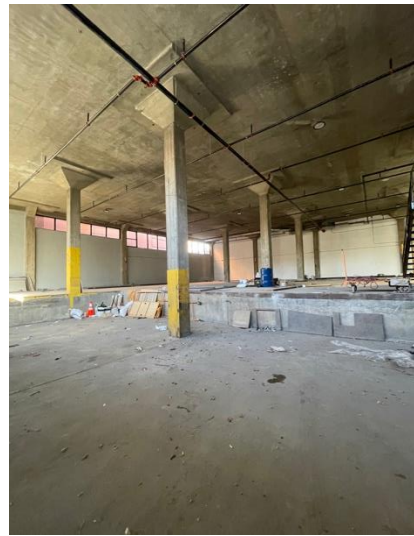
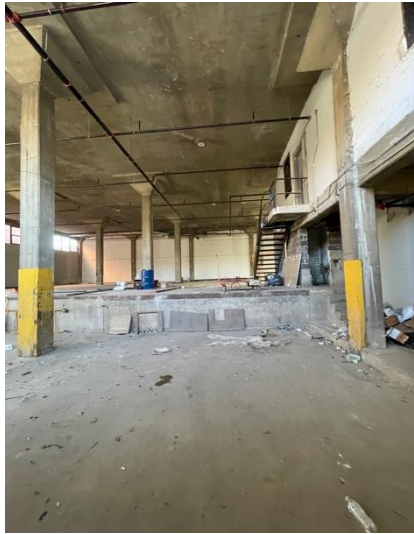
- 6-min walk to Cypress Ave 6 subway-line
- Manhattan: 2-miles (FDR)
- Queens/LGA: 2-miles/6-miles (I-278W)
- NJ/Newark: 7-miles (RFK & GW bridge)
- Westchester: 8-miles (Taconic Parkway N)

ASKING RENT

Please Inquire

All information and opinions contained herein are sourced from parties considered reliable but are not independently verified, and no guarantee, warranty, or representation is made as to their accuracy. This material is subject to errors, omissions, changes in terms, and withdrawal without notice, and prospective tenants should rely on their own investigation.



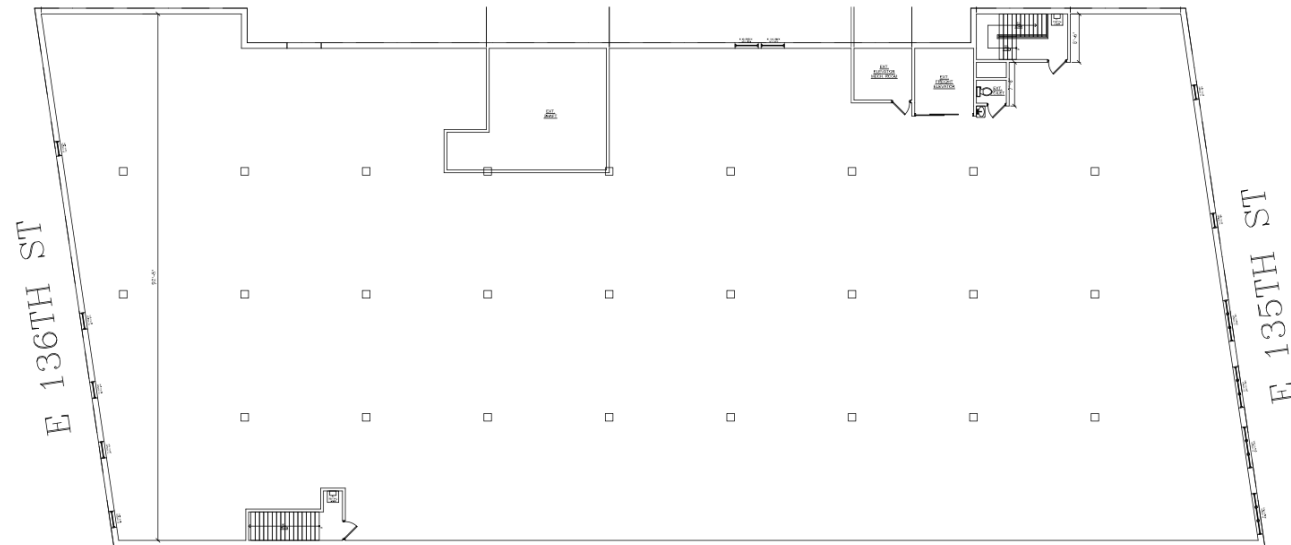
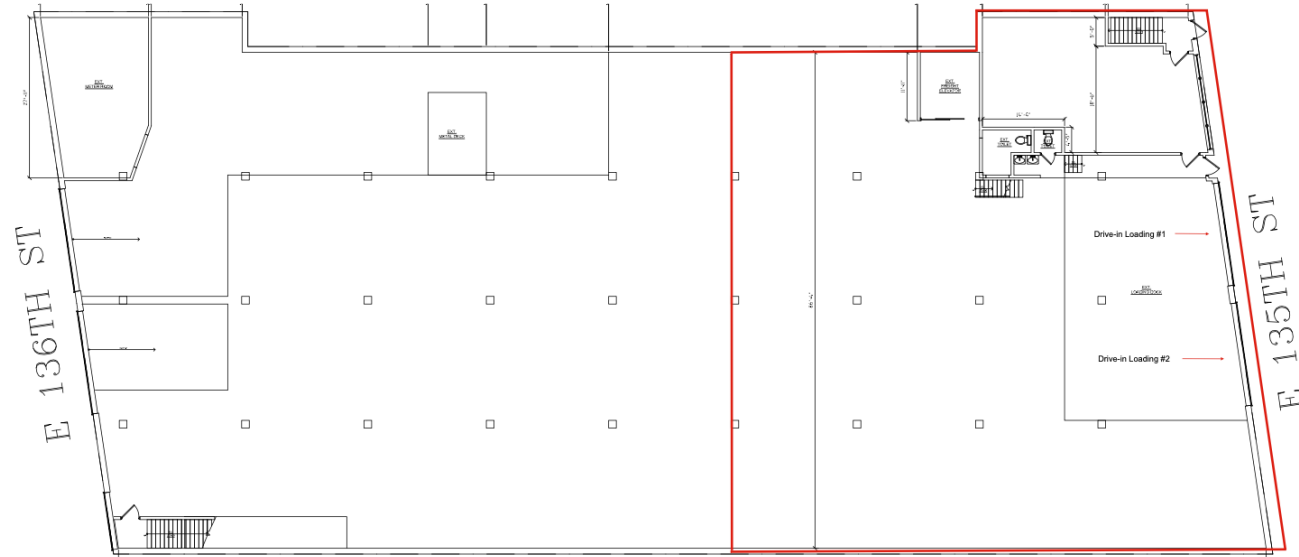


Ground Level

2nd Floor



All information and opinions contained herein are sourced from parties considered reliable but are not independently verified, and no guarantee, warranty, or representation is made as to their accuracy. This material is subject to errors, omissions, changes in terms, and withdrawal without notice, and prospective tenants should rely on their own investigation.



FOR ADDITIONAL INFORMATION
PLEASE INQUIRE

YARON COHEN
516-780-4106
YARON@LEVIATHANCRE.COM

ELIE COHEN
917-708-0511
ELIE@LEVIATHANCRE.COM

DANIEL COHEN
516-426-9959
DANIEL@LEVIATHANCRE.COM

