

ENGLEWOOD

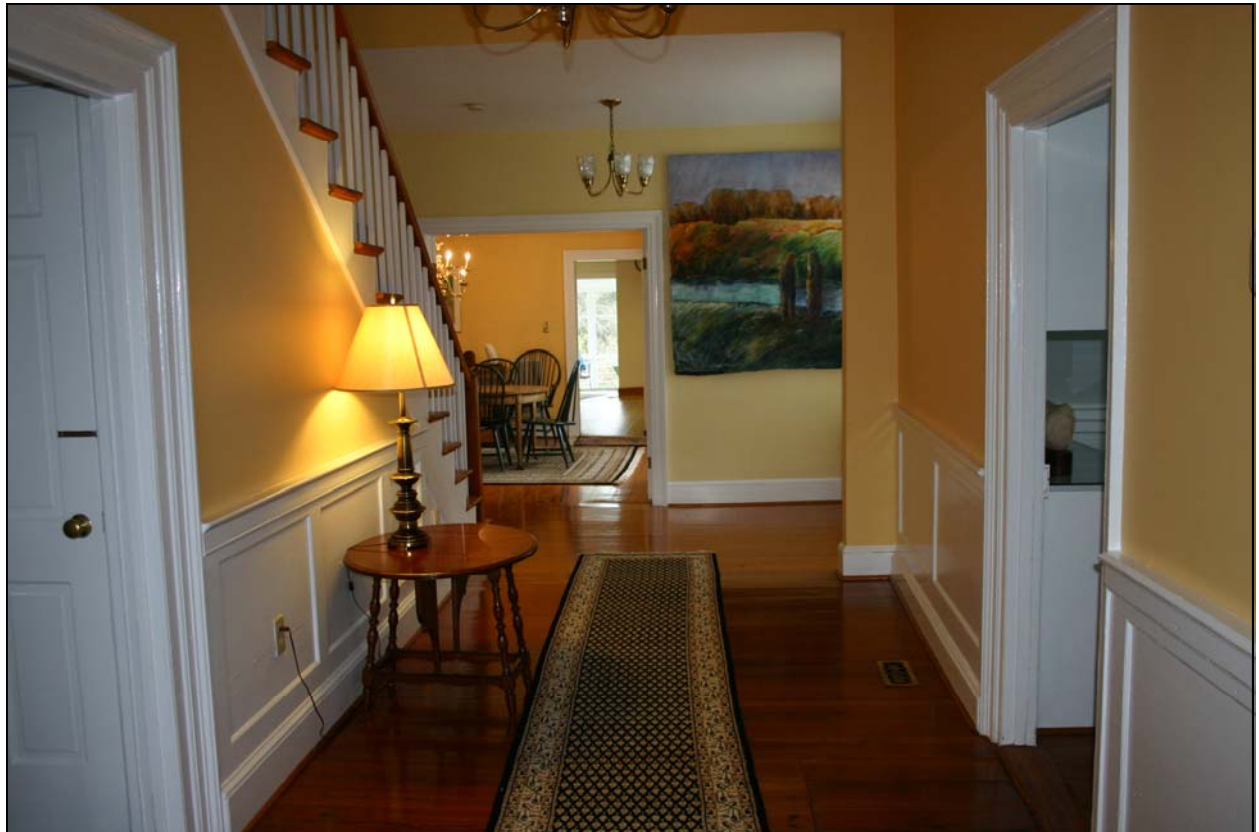
Circa : 1756

Incomparable History
Extraordinary Opportunity















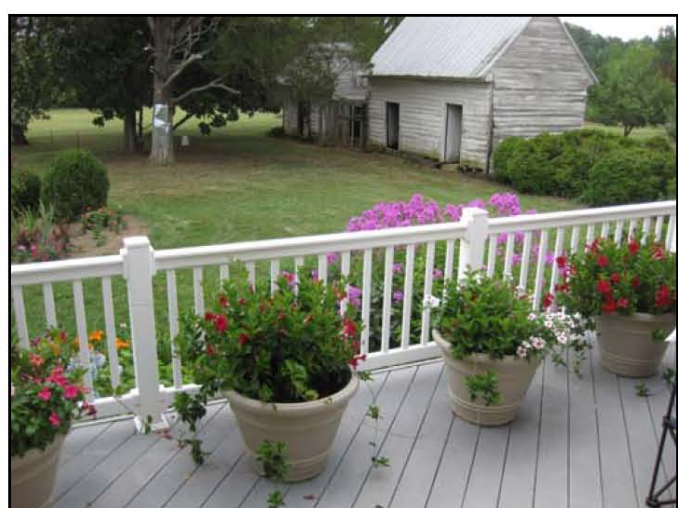










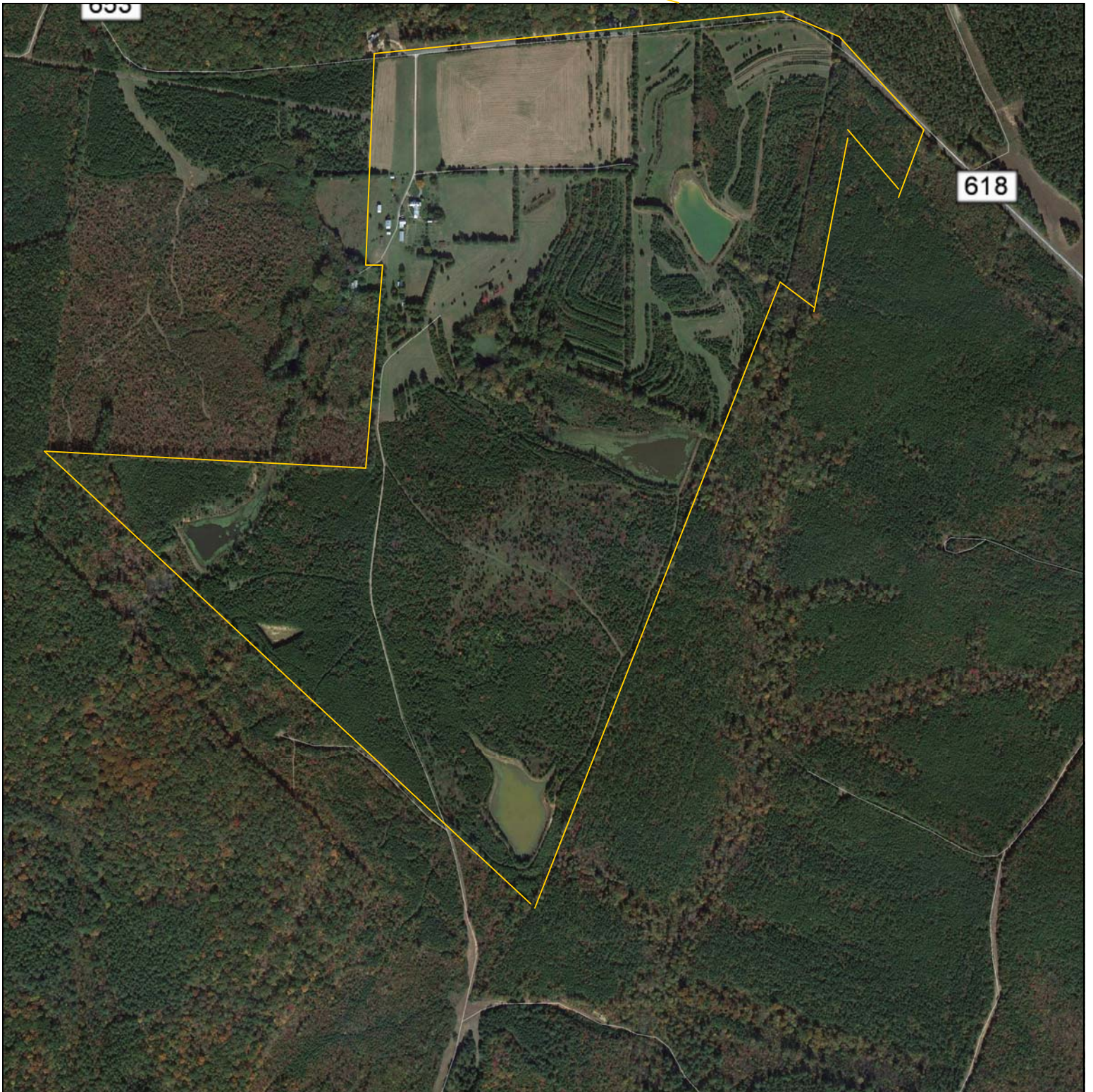












Englewood

1954 Woodsdale Drive, Alberta, Virginia

Original home 1756 – Addition of dining room and kitchen 1920's – Complete renovation 1990's

Main Floor

Front Door-

originally a double door. Existing door dates from 1850's – hand crafted, original wavy glass.

Front Hall – 8' x 27'

original wide plank floors, panel wainscoting, wide staircase to 2nd floor.

Front Parlor – 19' x 17'6"

11' ceilings, crown molding, wide plank floors, chair rail and paneled wainscoting, ceiling fan, 2 over sized windows, built-in bookcase, fireplace with original mantle woodwork.

Master Suite – 19'6" x 13'6"

11' ceilings, hardwood floors from 1990, paneled wainscoting, original fireplace mantle, fireplace bricked in, door and door frames on either side of fireplace are original and once outside doors, ensuite bath with separate shower, jetted tub, large walk-in closet.

Dining Room – 16' x 14'

Oak hardwood floors, French doors to side deck, large windows on opposite wall. 1920's French doors separate from front hall.

Country Kitchen 24' x 16'6"

Center Island with double sink, dishwasher, gas range, tile and conglomerate floor (2009), Counter tops & sink (2012), window seat, wood stove, eat-in area, abundant storage – cupboards, glass front display cabinets, built in open shelving, walk-in pantry, French doors to side deck, back door to screened porch.

Laundry/Mud Room 13' x 11'

Vinyl floor, washer/dryer/ upper wall cabinet, built in ironing board and shelving.

Half Bath

Cabinet sink, bead board wainscot

Wide Stair Case

Hardwood staircase (1990)

Second Floor

Center Hall Landing – 19' x 10'

Original wide plank flooring, floor to ceiling window, ample room for sitting area

3 Bedrooms

2nd - 19' x 13' - wide plank floors, door to 2nd floor deck, floor to ceiling window, sitting area, attached bath with tub/shower combo, closed fireplace with mantle.

3rd - 19' x 12' – wide plank floors, attached bath with shower, light in closet, floor to ceiling window, closed fireplace with mantle

4th - 16' x 11' – hardwood floors attached bath with shower, light in closet, door to 2nd floor deck, eave storage.

Third Floor

5th Bedroom – 19'6" x 12' – hardwood floors (1990), dormer window, 2 eave windows

Office/Sewing Room – 8' x 12', hardwood floors, 2 eave windows

Half Bath – pedestal sink

2 additional dormer windows in hallway

Basement

- concrete floor
- brick fireplace (requires liner)
- walk-out – original stone steps
- ceiling height – 6'3"
- original timbers – pit sawn
- some crawl space
- furnace – Carrier - gas backup (2009)
- hot water tank – State Select, gas 38 gals

Exterior Features

- maintenance free features – vinyl siding, vinyl windows, vinyl railing, composite decking
- standing seam metal roof
- gutters and downspouts
- set back from road
- circular front drive with original stones
- family burial plot surrounded by stone wall
- slave cemetery
- carriage step-up stone at front door

Porches – Decks

- covered front entrance porch with brick floor, 10' x 18'
- side deck, composite decking, vinyl railing, 11' x 50'
- screened porch, 17' x 14'
- 2nd floor wood deck, 11' x 22'

Additional Features

- original 1756 flooring was 1½" thick – after only one sanding in 1990 are now 1¾"
- 1920's hardwood floors – back of front hall, dining room and 2nd floor 4th bedroom sanded once in 1990
- zoned central heat/air – heat pumps, gas backup for 1st floor
- central vac – all 4 levels
- 5 fireplaces – all non functional - wood stove in kitchen
- electric – 200 amp service
- 2 wells – one for house, other for gardens and yard
- septic system – (1990) 1000 gallon tank, 4 – 100' absorption trenches

Dependencies (Outbuildings)

- original dairy and smokehouse
- chicken house
- granary
- tobacco barn
- carriage house
- tack building
- original farm office and small tool/workshop
- ice house below farm office
- blacksmith –attached behind farm office
- pole barns – 3
- pump house – in 1920's housed Delco generator
 - windmill tower now wisteria tower
- feed storage building

Gardens

- professional landscaping
- 50 x 100 organic vegetable garden
- asparagus patch
- grape arbors – front yard arbor, scuppernong & muscadine – old varieties

Orchard

apple – Gala, Granny Smith, McIntosh, Black Beauty
fig, pear, peach, plums, apricot, cherry

Plantings

- Arrow Leaf Hedge, Nellie Stevens, Boxwood, Crepe Myrtle and more.....

Nursery Stock

- approx. 400 Nellie Stevens Holly - 4 to 6 ft.
- Leyland Cypress
- Crepe Myrtle

Ponds

- 1 original
- 4 additional – 1 -25 ft deep, 3 – 12 ft. deep
- Stocked with bass, crappie, brim

Land

- 206 acres more or less
- approx. 50 acres open – pasture/hay fields, driving range
- gently rolling
- nursery stock, woods
- soil – <http://websoilsurvey.nrcs.usda.gov/>

Wildlife

- deer, beaver, fox, black bear, turkey, otters
- numerous birds

Additional Info

- high speed internet connection - Verizon plug-in
- Dish or DirecTV satellite
- Schools – Public - Brunswick or Mecklenburg County
Private – Brunswick Academy, Kensington Forest
Southside Community College
- Englewood run as B&B at one time (7yrs)