



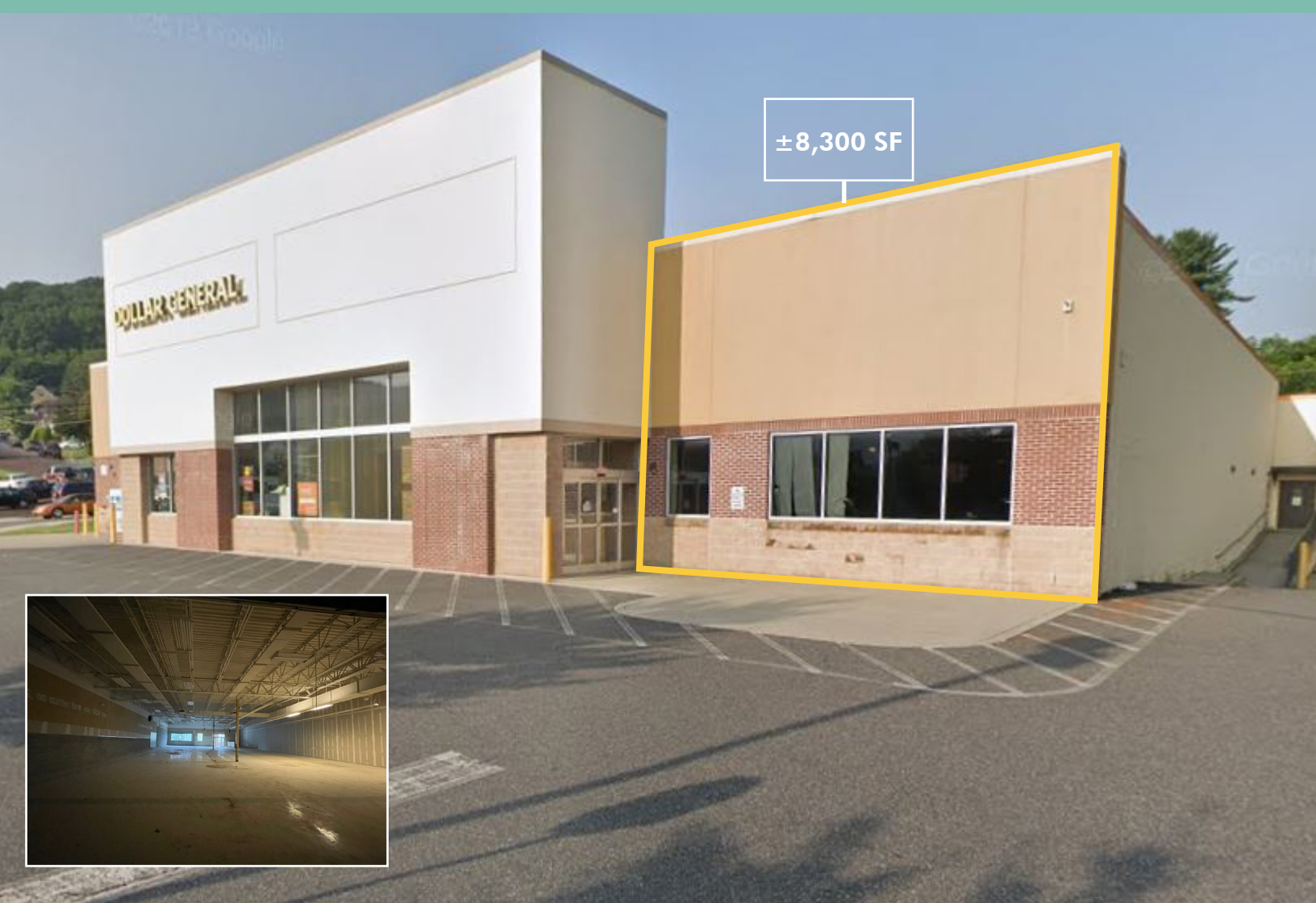
# 1529 Broadway

**DOLLAR GENERAL®**

## Property Details

- + ±8,300 SF available for sublease
- + Total building SF - ±19,092 SF
- + Built in 2011
- + Total Acres: ±3.19 Acres
- + Along Broadway with a cross street of Dodson Street & Lechauweki Ave
- + Located next to a Dollar General
- + ±100 on-site parking spaces
- + Traffic counts along Broadway are 13,177 VPD
- + Multiple bus routes in close proximity
- + Many local businesses, including retail stores, hotels, colleges and restaurants near by
- + Zoning: MD-R - Medium-Density Residential District
- + Minutes from Route 412

±8,300 SF Available For Sublease | Located Next To a Dollar General



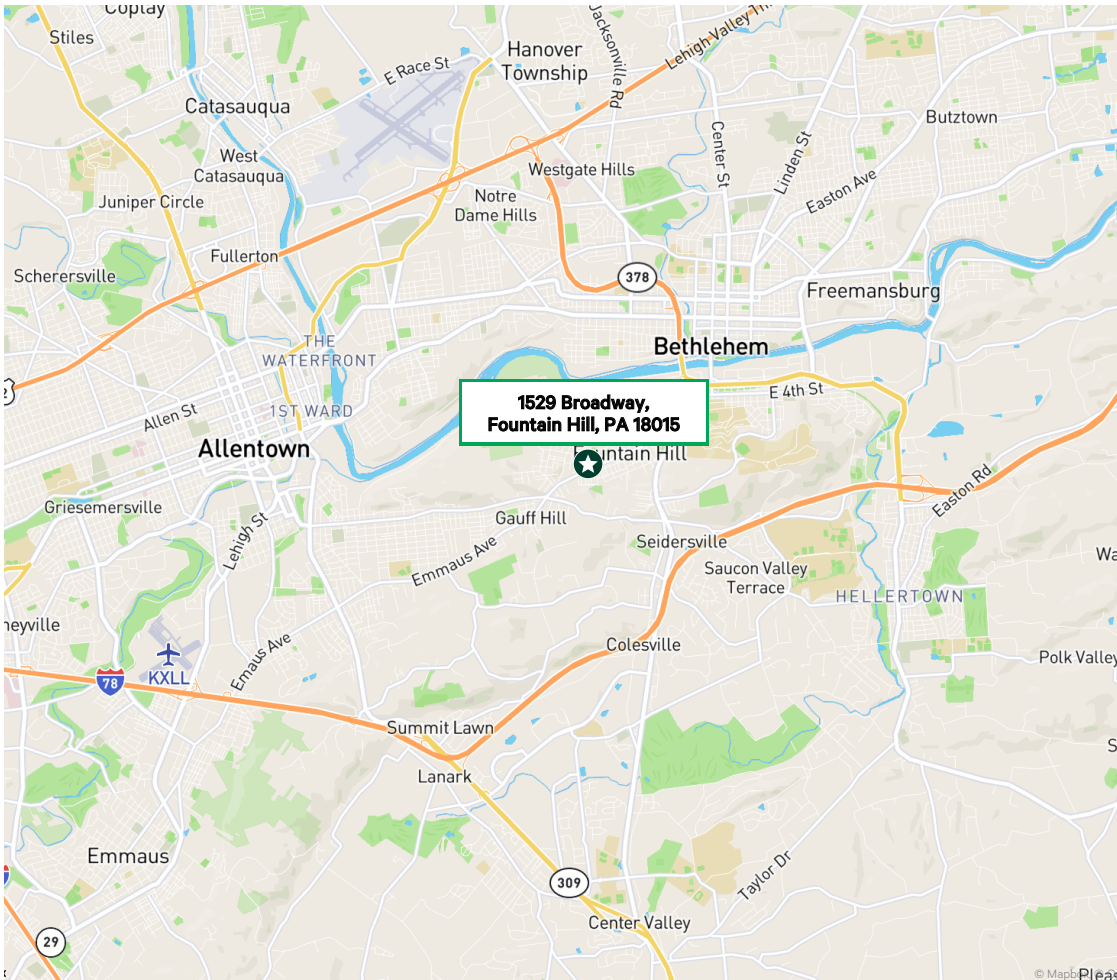
±8,300 SF Available For Sublease  
1529 Broadway | Fountain Hill, PA 18105

For Sublease

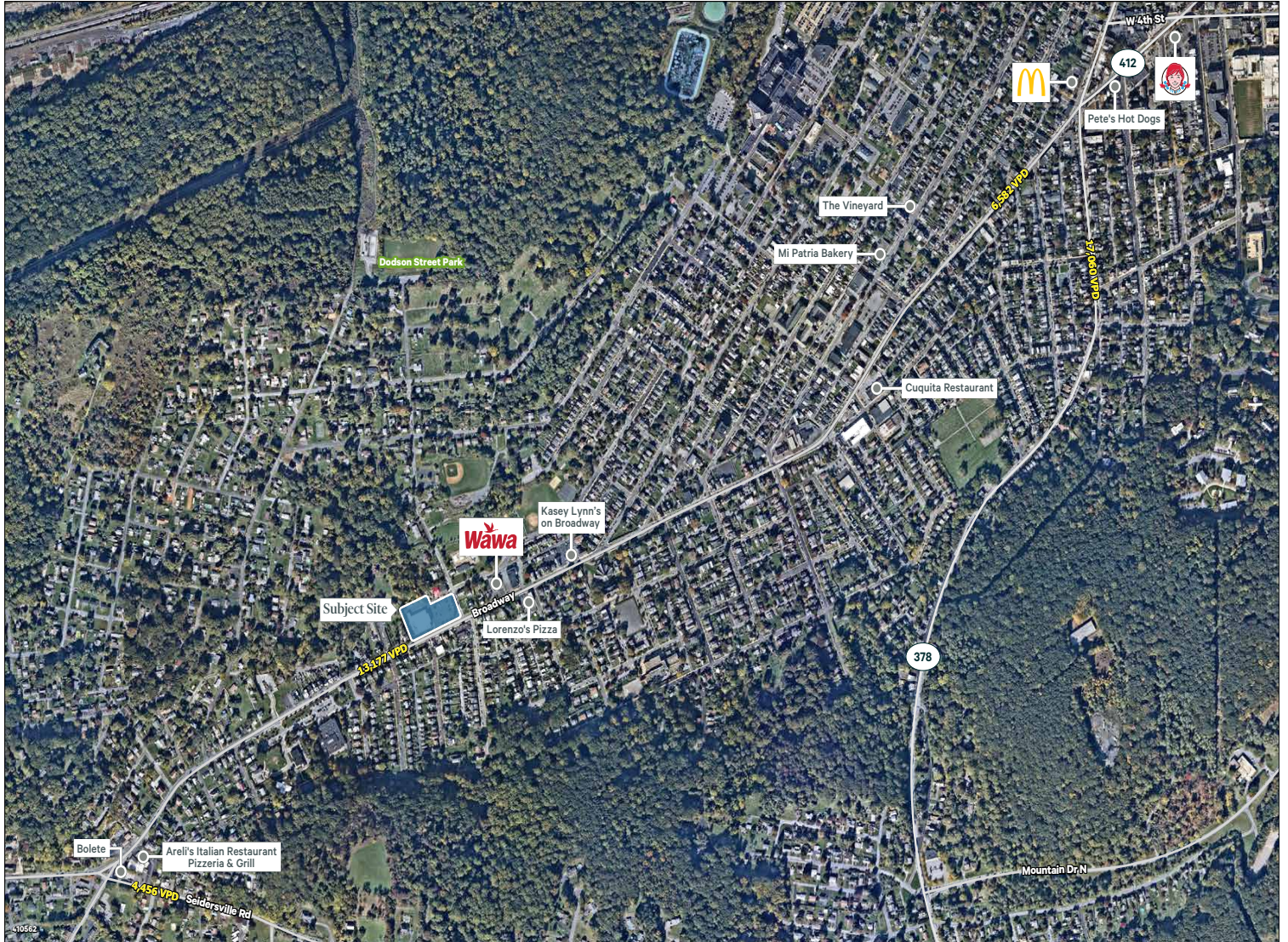
### Site Aerial



### Site Location Map



# Market Aerial



## Contact Us

### Jody King

Senior Vice President  
+1 610 398 3384  
jody.king@cbre.com  
Licensed: PA

### Pam Hall

Associate  
+1 610 573 5341  
pamela.hall@cbre.com  
Licensed: PA

### CBRE, Inc.

1725 Glenlivet Drive  
Allentown, PA 18106  
+1 610 398 6900  
Licensed Real Estate Broker

© 2025 CBRE, Inc. All rights reserved. This information has been obtained from sources believed reliable, but has not been verified for accuracy or completeness. You should conduct a careful, independent investigation of the property and verify all information. Any reliance on this information is solely at your own risk. CBRE and the CBRE logo are service marks of CBRE, Inc. All other marks displayed on this document are the property of their respective owners, and the use of such logos does not imply any affiliation with or endorsement of CBRE. Photos herein are the property of their respective owners. Use of these images without the express written consent of the owner is prohibited.