

Midtown Property For Lease

11 & 23 N.W. 10th Street

Oklahoma City, Oklahoma 73103



CBRE

Highlights

+Available Square Feet:

-1,773± - 12,391± RSF

+Parking:

-(28) Free surface spaces

-(5) Covered reserved spaces

-(60) Additional parking spaces available in close proximity

+Private outdoor seating area provides great views of Downtown Oklahoma City skyline

+Exterior signage available

+Short walk to Midtown restaurants, bars, shopping & museums

+Perfect space for retail, office, or a showroom

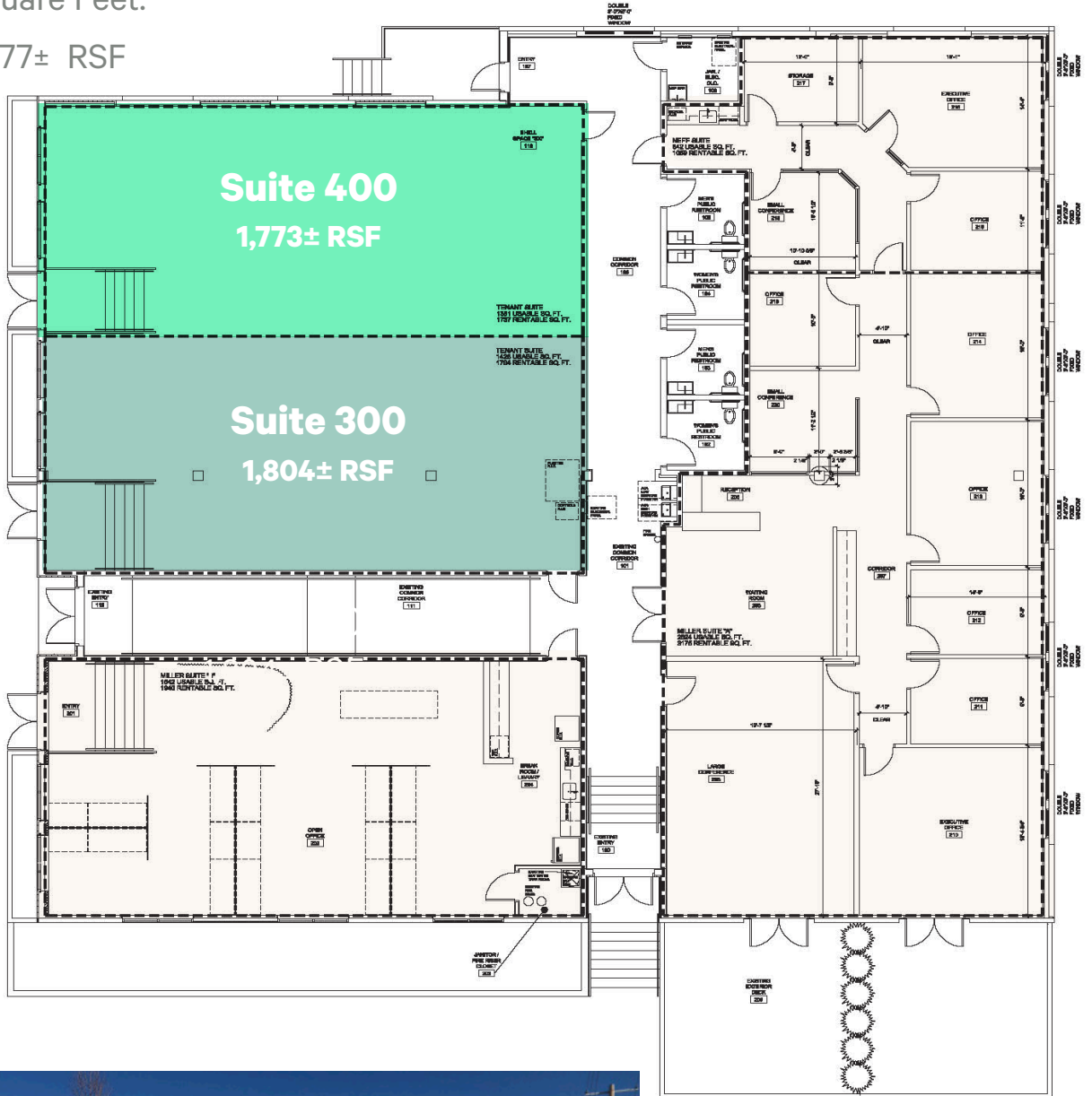
Conceptual Rendering - 11 NW 10th St



11 N.W. 10th St

+Available Square Feet:

-1,773± - 3,577± RSF

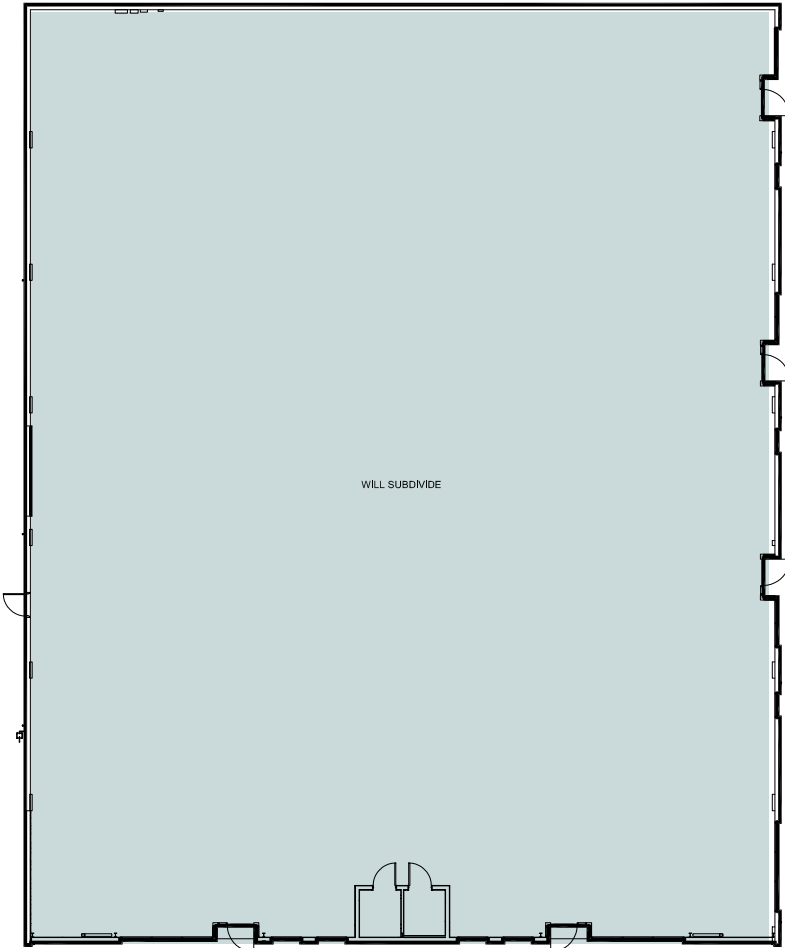


23 N.W. 11th St

+Available Square Feet:

-12,391± RSF

*Not currently divided into suites, will subdivide as required



Photos



23 NW 10th St



Central Business District



Contact Us

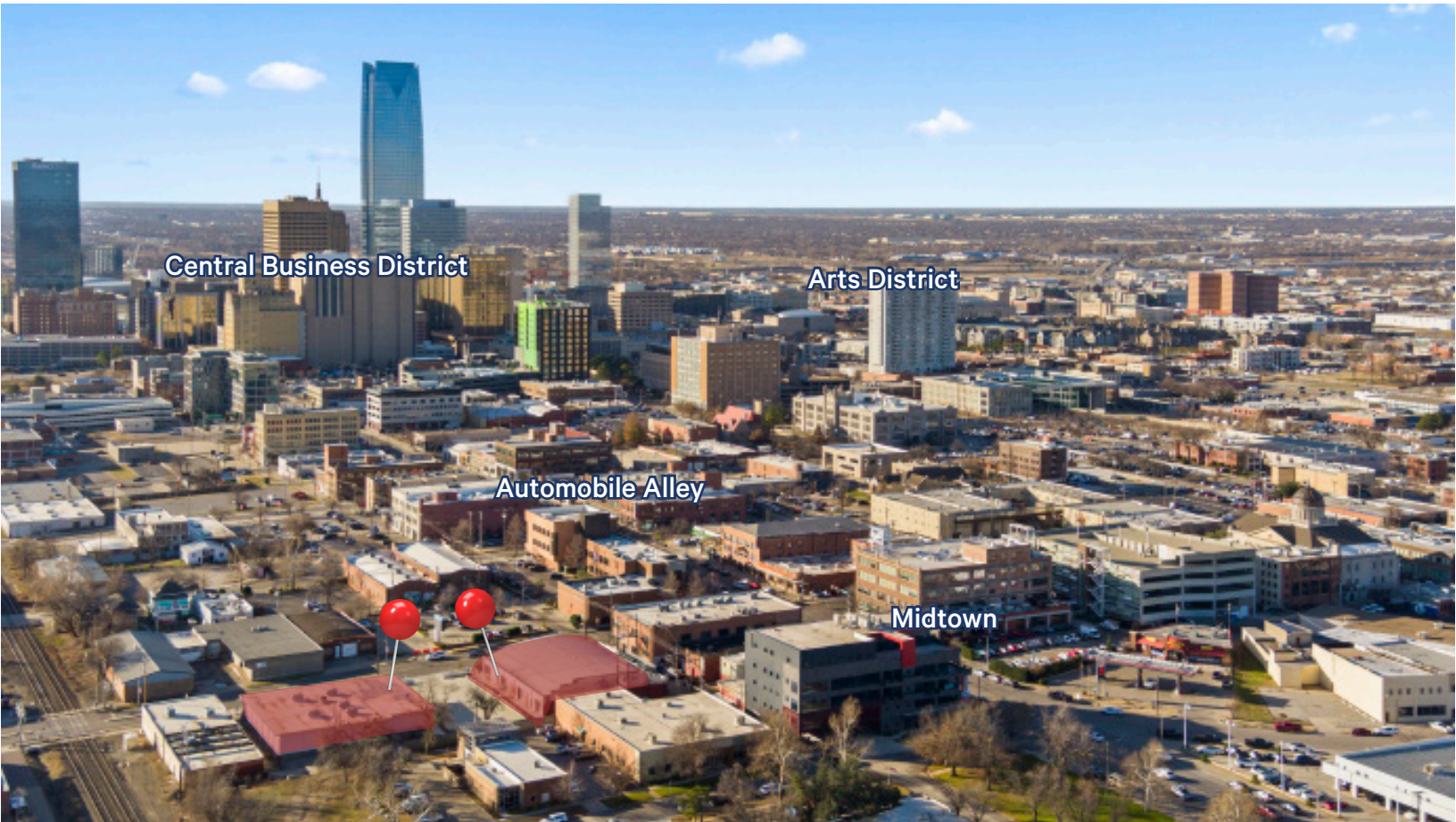
Amy Dunn, CCIM

First Vice President

+1 405 607 6021

amy.dunn@cbre.com

Lease Rate:
\$30.00 PSF NNN



Midtown

Walking distance
to shops and
restaurants



Growth

4.16% Population
growth within 1 mile



Traffic

13,051 VPD @ NW
10th & N Broadway

CBRE