

717 14TH ST NW

Washington, DC 20005

Office For Lease

7,782 - 11,193 SF



Leasing Information:
202.513.6700

Lincoln

Adam Biberaj 202.513.6736 abiberaj@lpc.com	Merrill Turnbull 202.513.6713 mturnbull@lpc.com	Jae Lee 202.513.6718 jlee@lpc.com	Tim Whitebread 202.513.6712 twhitebread@lpc.com
---	--	--	--

101 Constitution Avenue NW
Suite 325 East
Washington, DC 20001

www.lpc.com

717 14TH ST NW

Washington, DC 20005

Office For Lease

7,782 - 11,193 SF



Property Highlights

- Prime 14th Street location with close proximity to the White House and views of the Washington Monument
- Full floor opportunities in excellent condition
- Two private balconies
- Two-blocks from both McPherson Square Metro Station and Metro Center
- On-site retail (CVS Pharmacy)
- Energy Star labeled

Availabilities

Availabilities	SF	Lease Rate	Date Available
Suite 100	7,782 SF	Negotiable	2/1/2026
Suite 200	10,848 SF	Negotiable	Immediately
Suite 400	11,193 SF	Negotiable	Immediately
Suite 500	10,848 SF	Negotiable	Immediately
Suite 900	10,362 SF	Negotiable	Immediately
Suite 1200	7,995 SF	Negotiable	Immediately



Adam Biberaj

202.513.6736
abiberaj@lpc.com

Merrill Turnbull

202.513.6713
mturnbull@lpc.com

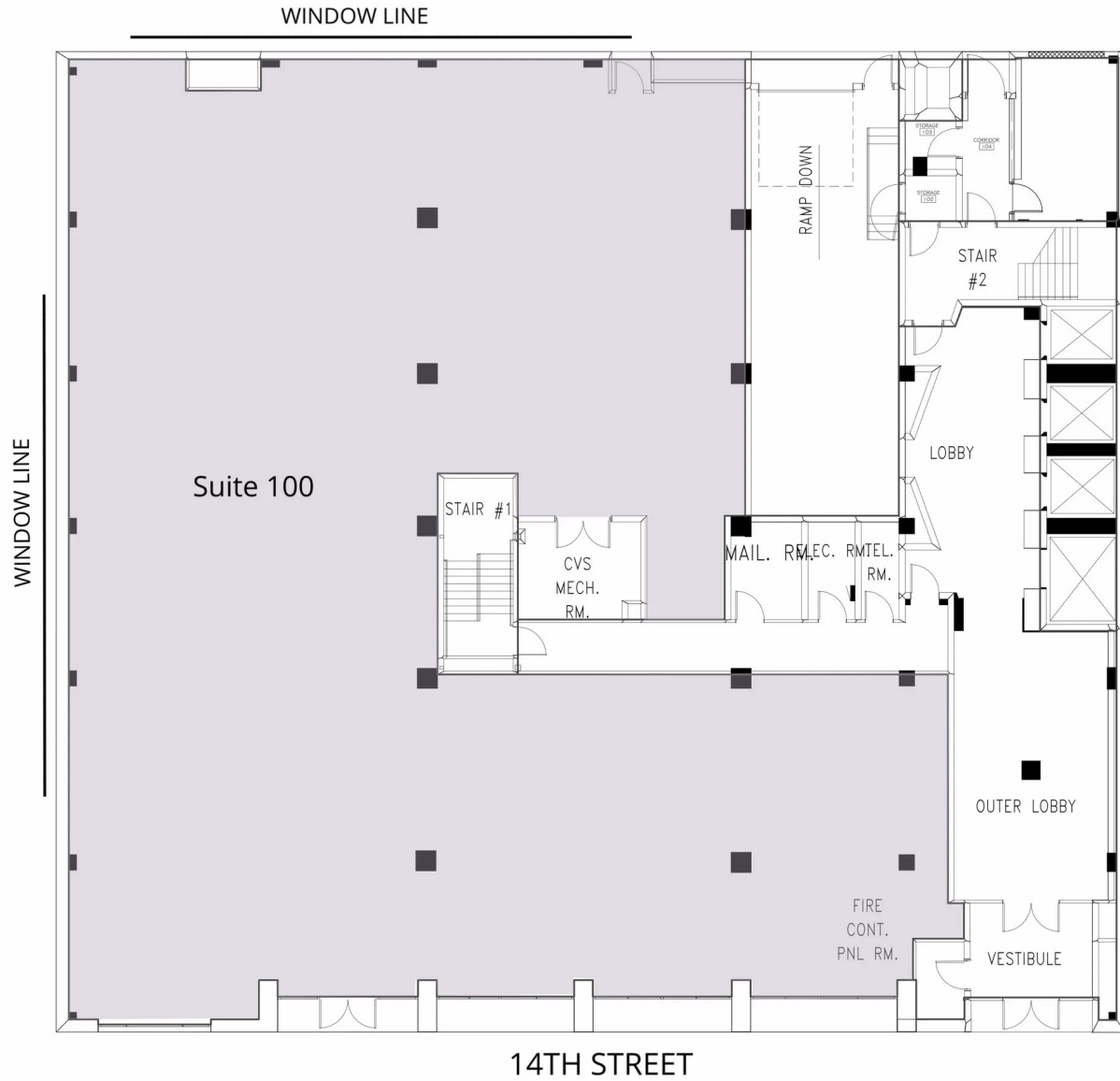
Jae Lee

202.513.6718
jlee@lpc.com

Tim Whitebread

202.513.6712
twhitebread@lpc.com

Lincoln



Suite	Size	Description
■ Suite 100	7,782 SF	Available 2/1/2026

Adam Biberaj 202.513.6736 abiberaj@lpc.com	Merrill Turnbull 202.513.6713 mturnbull@lpc.com	Jae Lee 202.513.6718 jlee@lpc.com	Tim Whitebread 202.513.6712 twhitebread@lpc.com
---	--	--	--

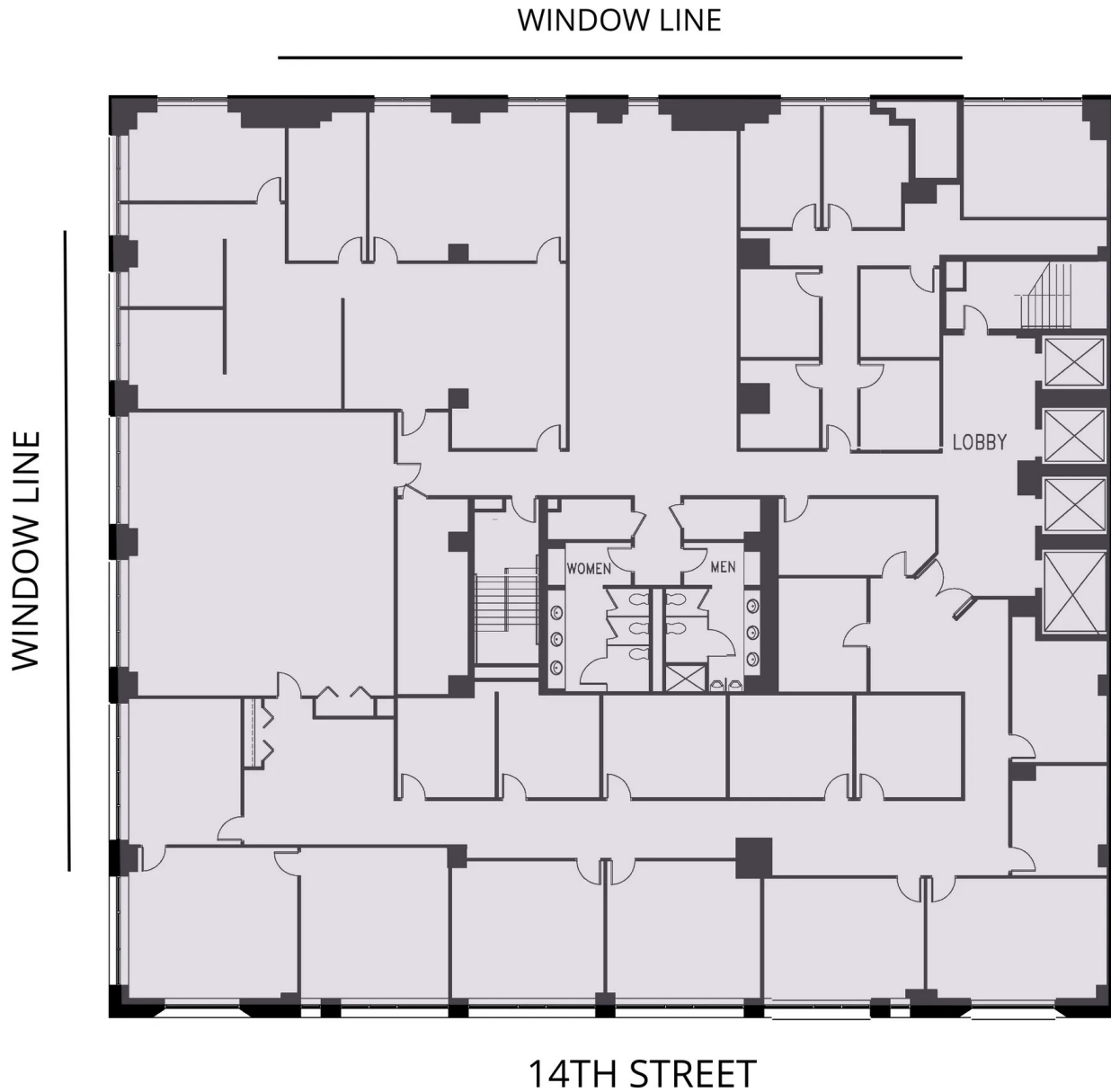


717 14TH ST NW

Washington, DC 20005

Second Floor

10,848 SF



Suite	Size	Description
■ Suite 200	10,848 SF	Available Immediately

Adam Biberaj 202.513.6736 abiberaj@lpc.com	Merrill Turnbull 202.513.6713 mturnbull@lpc.com	Jae Lee 202.513.6718 jlee@lpc.com	Tim Whitebread 202.513.6712 twhitebread@lpc.com
---	--	--	--

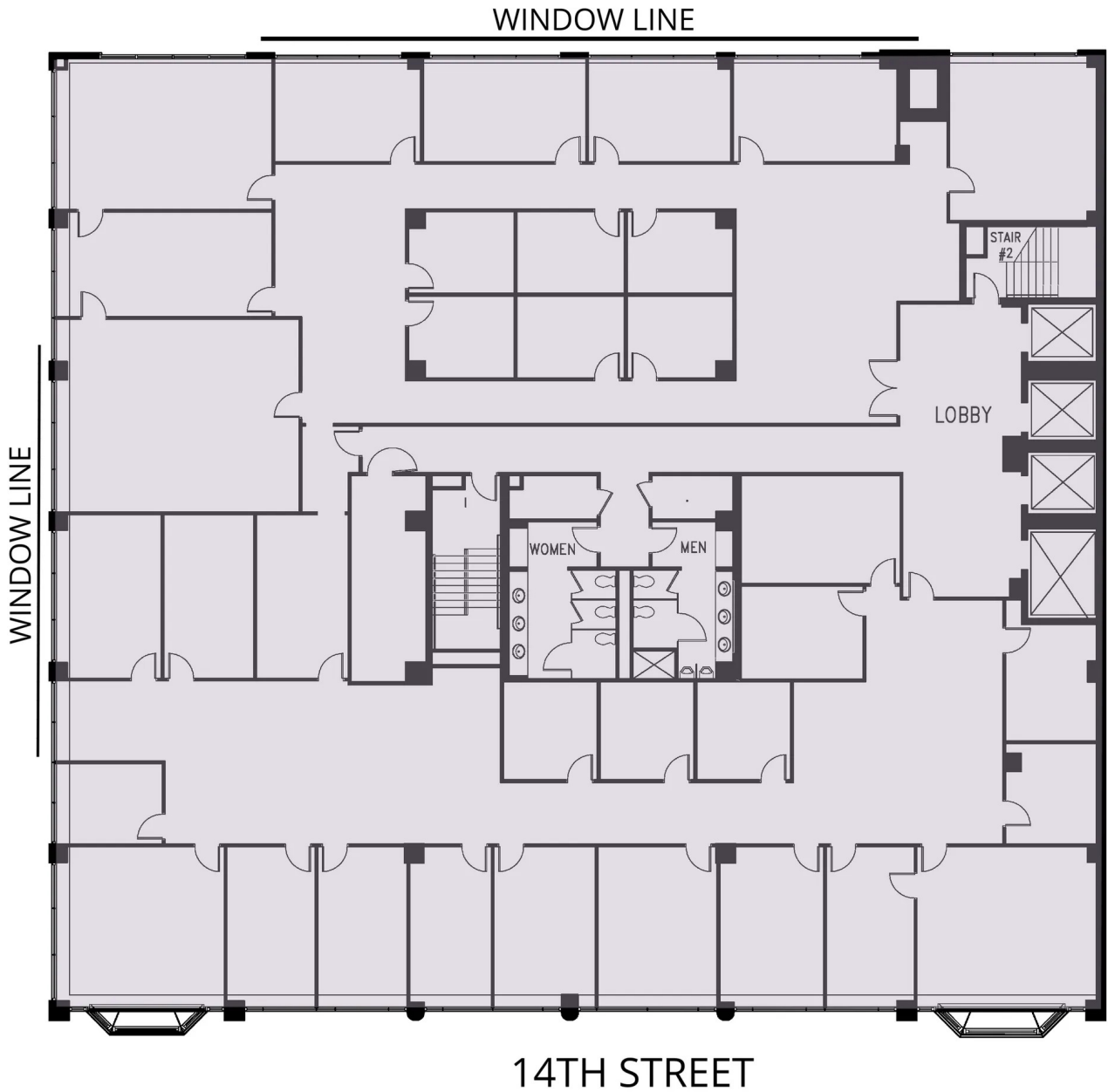
Lincoln

717 14TH ST NW

Washington, DC 20005

Fifth Floor

10,848 SF



Suite	Size	Description
■ Suite 500	10,848 SF	Available Immediately

Adam Biberaj **Merrill Turnbull** **Jae Lee** **Tim Whitebread**
202.513.6736 202.513.6713 202.513.6718 202.513.6712
abiberaj@lpc.com mturnbull@lpc.com jlee@lpc.com twhitebread@lpc.com

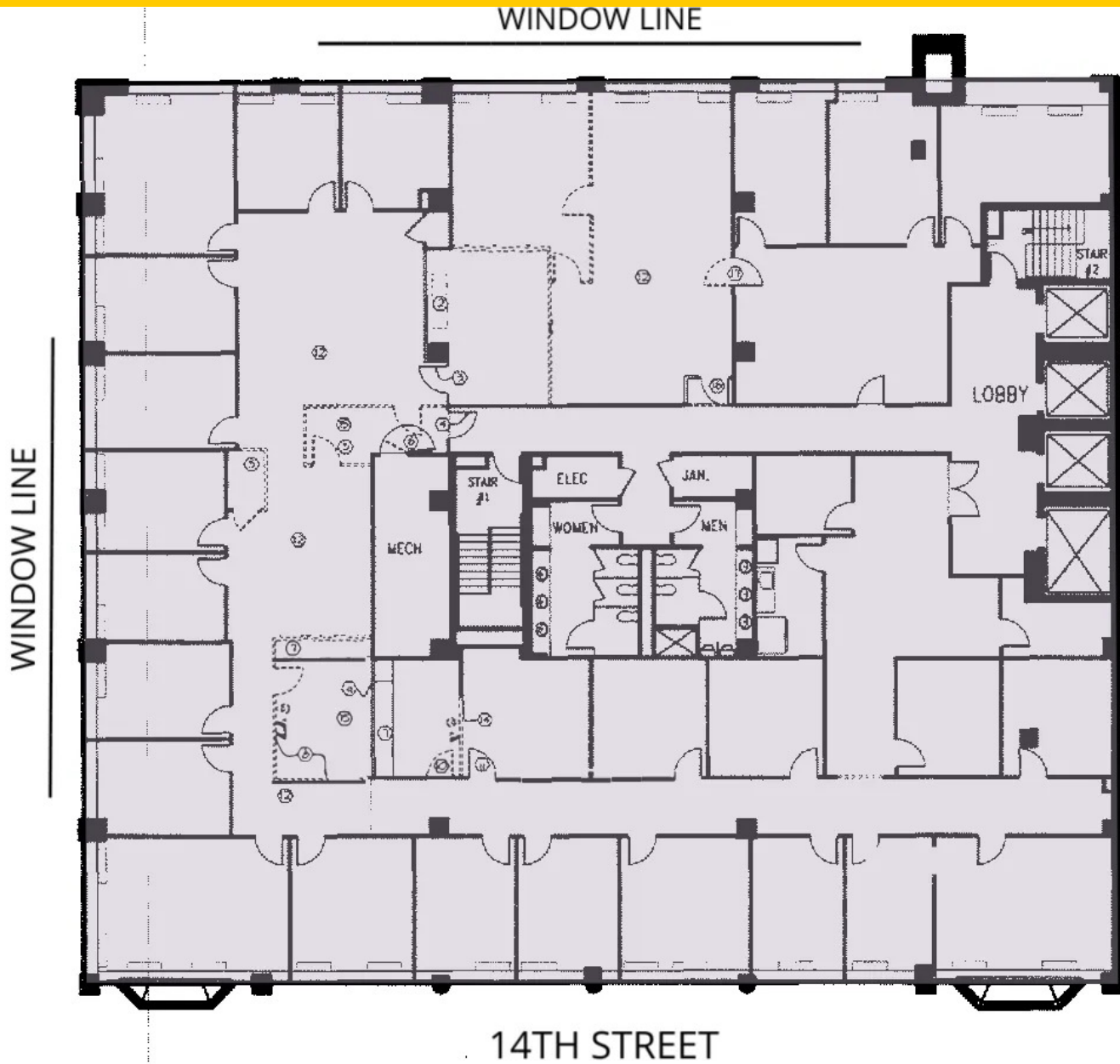
Lincoln

717 14TH ST NW

Washington, DC 20005

Ninth Floor

10,362 SF



Suite	Size	Description
■ Suite 900	10,362 SF	Available Immediately

Adam Biberaj
202.513.6736
abiberaj@lpc.com

Merrill Turnbull
202.513.6713
mturnbull@lpc.com

Jae Lee
202.513.6718
jlee@lpc.com

Tim Whitebread
202.513.6712
twhitebread@lpc.com

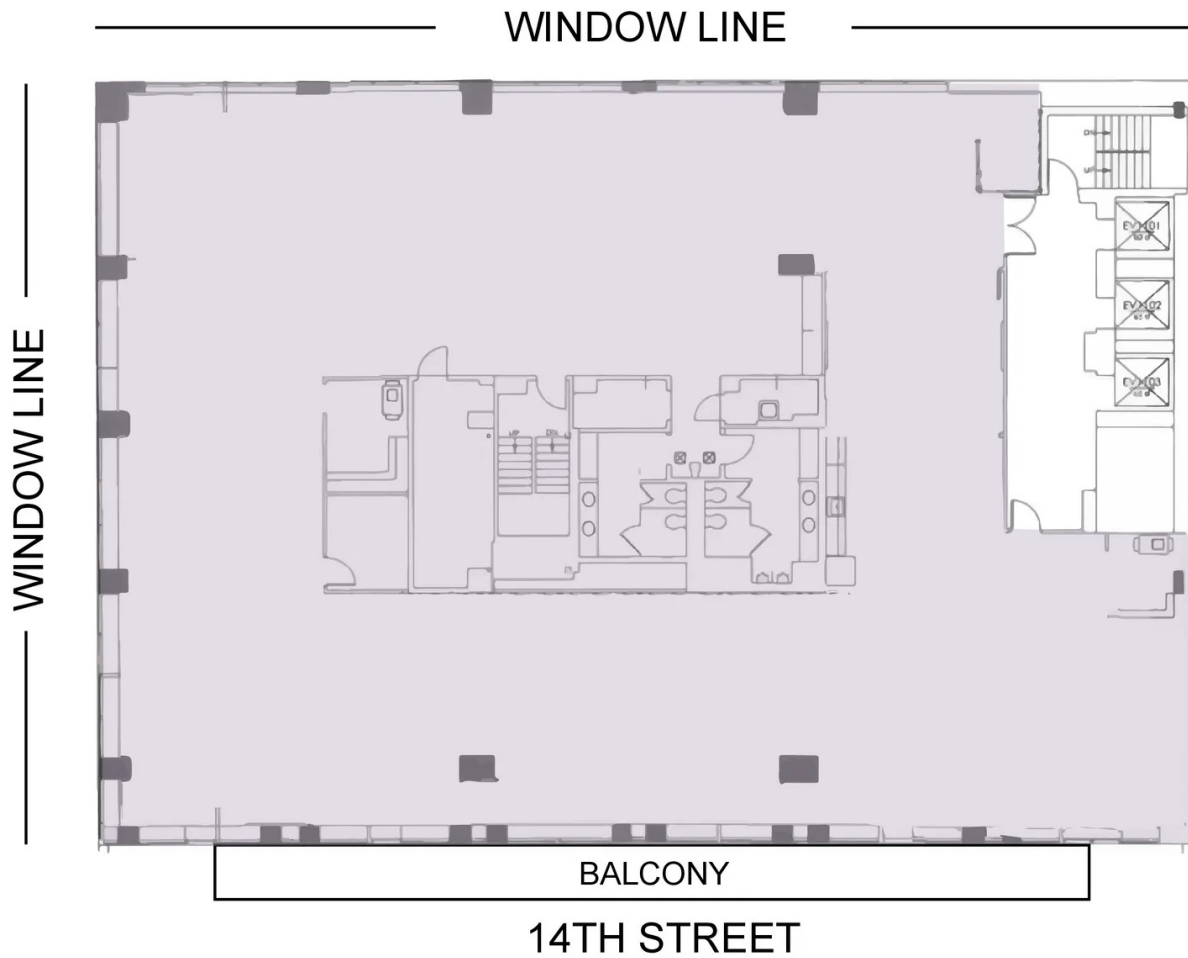
Lincoln

717 14TH ST NW

Washington, DC 20005

12th Floor

7,995 SF



Suite	Size	Description
■ Suite 1200	7,995 SF	Includes Private Balcony. Available Immediately.

Adam Biberaj Merrill Turnbull Jae Lee Tim Whitebread
202.513.6736 202.513.6713 202.513.6718 202.513.6712
abiberaj@lpc.com mturnbull@lpc.com jlee@lpc.com twhitebread@lpc.com

Lincoln



717 14TH ST NW

Washington, DC 20005

Leasing Information:
202.513.6700

Adam Biberaj
202.513.6736
abiberaj@lpc.com

Merrill Turnbull
202.513.6713
mturnbull@lpc.com

Jae Lee
202.513.6718
jlee@lpc.com

Tim Whitebread
202.513.6712
twhitebread@lpc.com

Lincoln

101 Constitution Avenue NW
Suite 325 East
Washington, DC 20001

www.lpc.com