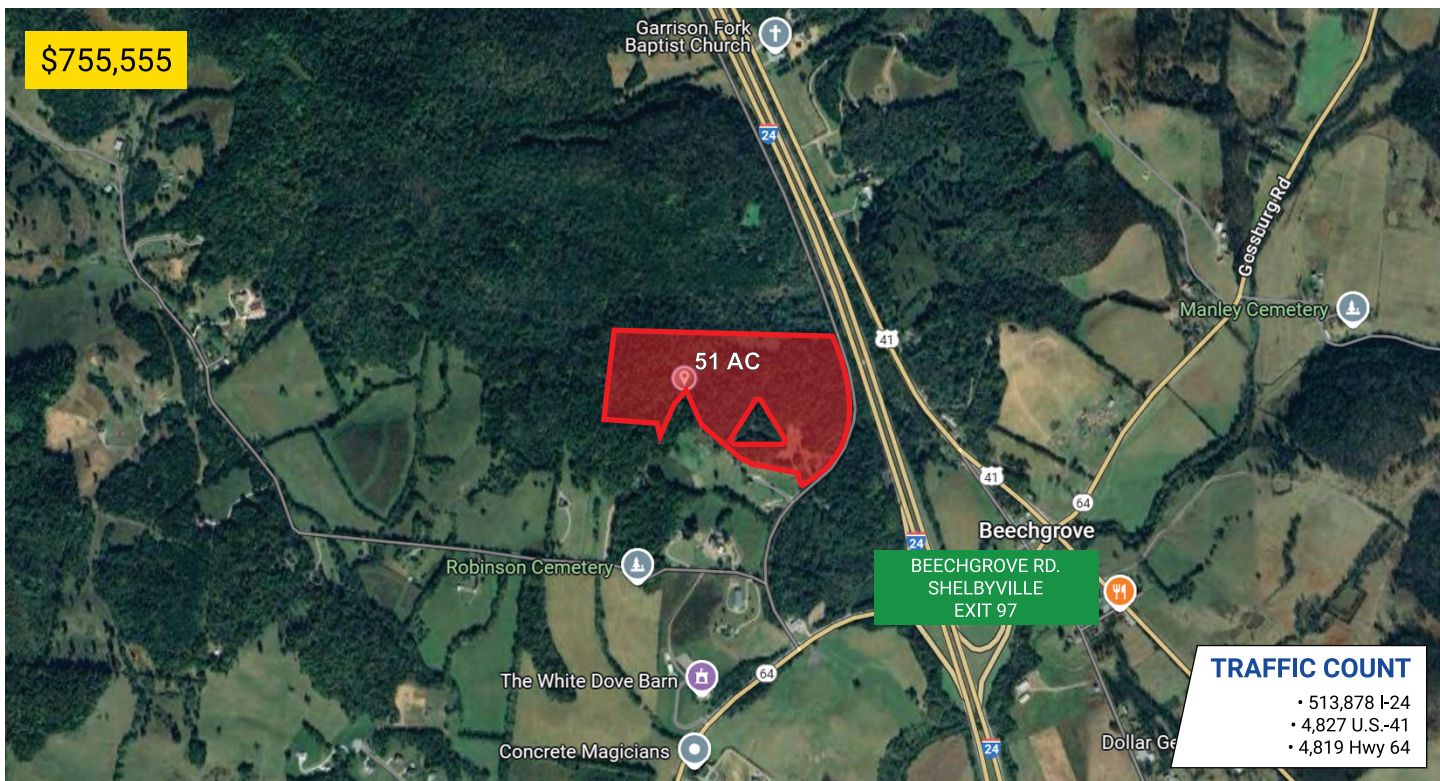


Jakes Branch Rd. - 51

BEECHGROVE, TENNESSEE 37018



developments | real estate | construction
615-896-0000



Acres: 51 +/-
Structures: N/A
Amenities: N/A
Road Frontage: N/A
Property Type: Land
Zoning: WDL ; PAS

PROPERTY HIGHLIGHTS

- Various types of trees
- Easy Access to I-24, U.S.-41, Hwy 64
- Approx. 1 hour to Nashville Airport



DEMOGRAPHIC SNAPSHOT

BEDFORD COUNTY

2025 Population Estimate	55,182
2025 Median HH Income	\$62,197
2025 Number of Households	55,182



615-896-0000

www.swansondevelopments.com

The information herein has been obtained from sources believed to be reliable. There is no guarantee, warranty or representation that the information herein is accurate. Any projections, opinions, assumptions, or estimates used are for example only and do not represent the current or future performance or value of the property. Property location imagery provided by Google Maps.