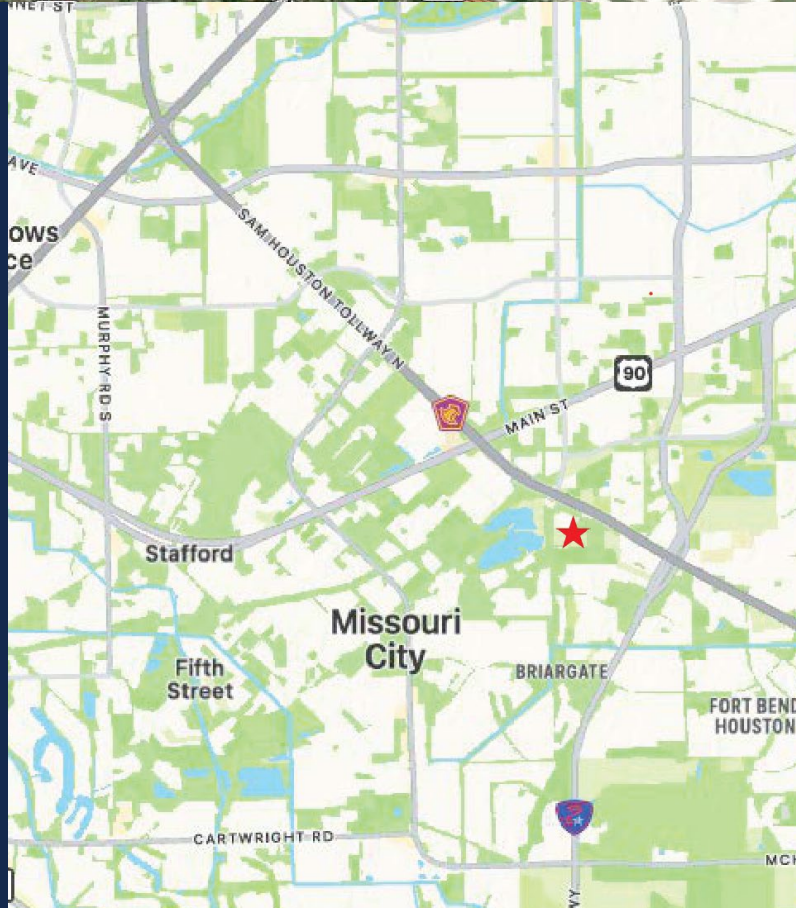


PROPERTY FEATURES

- Address: Cangelosi & Fondren Rd, Missouri City, TX 77489
- Size: +/- 16.15 Acres
- Utilities: Available through City of Houston
- Immediate Access to Beltway 8, Convenient Access to Highway 90
- Located Across the Street from Lakeview Business Park
- Outside of 500-Year Flood Plain
- No Wetlands
- Zoning: Unrestricted

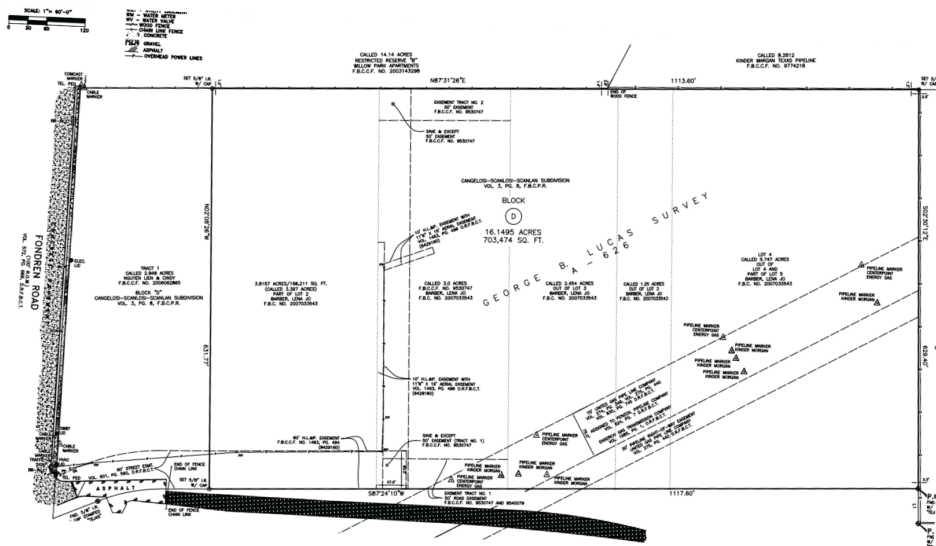
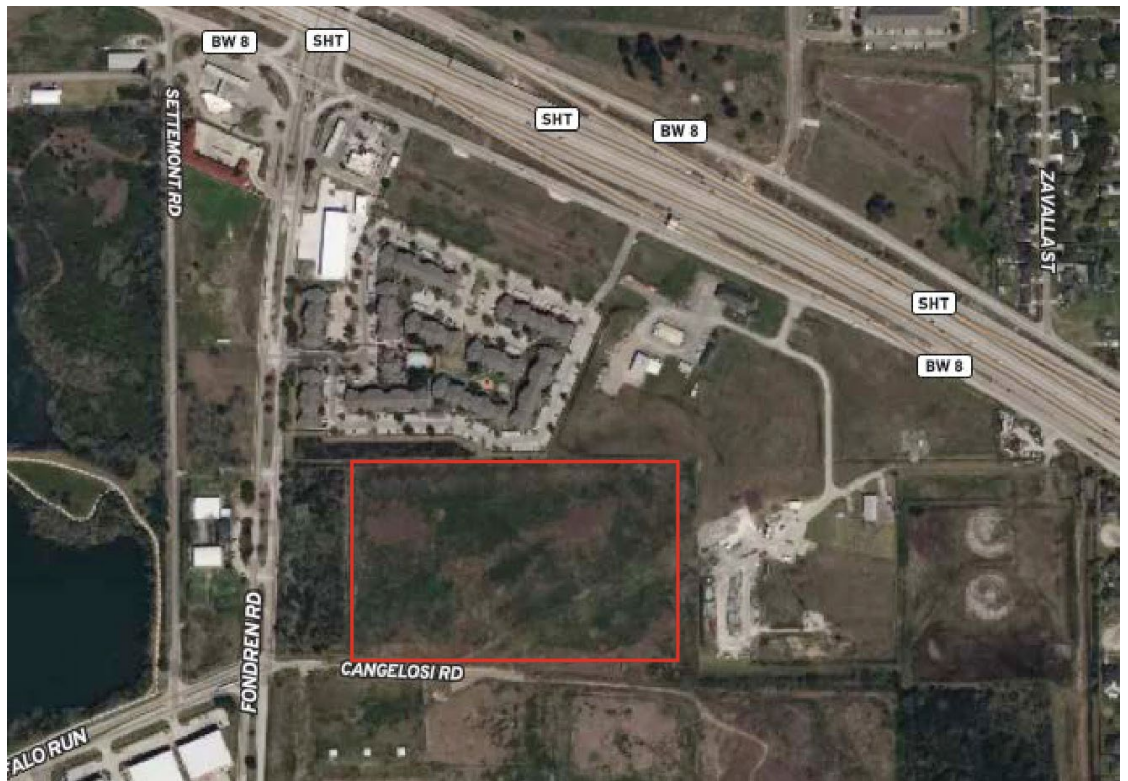


FOR MORE INFORMATION PLEASE CONTACT

Dylan Stiteler • dstiteler@bridgecommercialre.com • 281 394 3880

The information contained here in has been given to us by the owner of the property or other sources we deem reliable, we have no reason to doubt the accuracy, but we do not guarantee it. All information should be verified prior to purchase or lease.

PROPERTY OVERVIEW



SURVEY OVERVIEW

FOR MORE INFORMATION PLEASE CONTACT

Dylan Stiteler • dstiteler@bridgecommercialre.com • 281 394 3880

The information contained here in has been given to us by the owner of the property or other sources we deem reliable, we have no reason to doubt the accuracy, but we do not guarantee it. All information should be verified prior to purchase or lease.