

MidPoint One

7125 JANES AVENUE
WOODRIDGE, ILLINOIS



±1,995 - 2,470 SF
Office Space for Lease

MidPointOne

7125 JANES AVENUE
WOODRIDGE, ILLINOIS



MidPointOne, located at **7125 Janes Avenue** in **Woodridge, Illinois**, is a 51,579 square foot, single-story office / flex opportunity with quality finishes, high ceilings, ample parking, and access to a shared dock.

The property is centrally located near 75th Street with immediate access to I-355/I-55 on the east and I-88 to the north. The property also benefits from proximity to the main thoroughfares of IL Route 34 and IL Route 83. An abundance of nearby restaurants, hotels, shopping and business services are available.

±1,995 SF

TO

±2,470 SF

AVAILABLE

52,728 SF

BUILDING

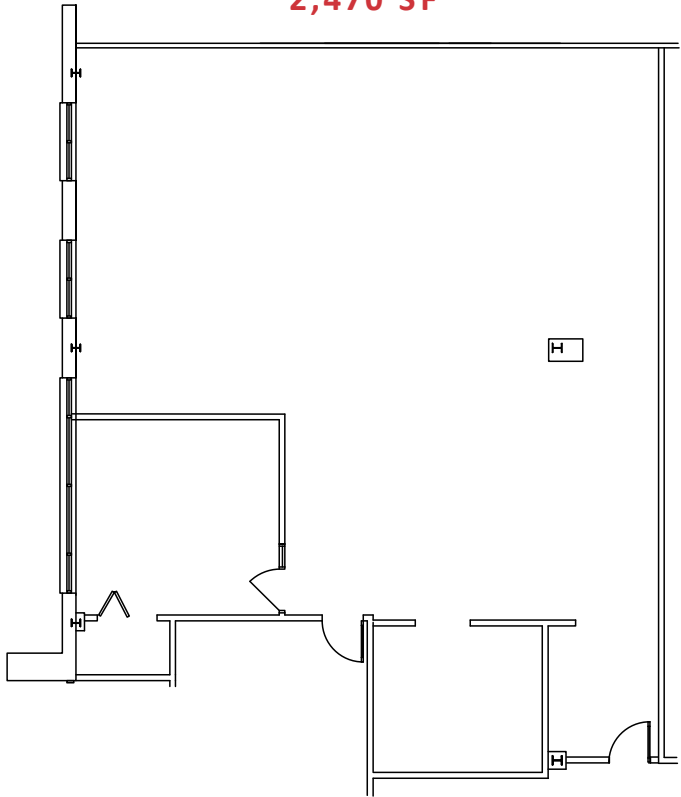
4.2:1,000

PARKING RATIO

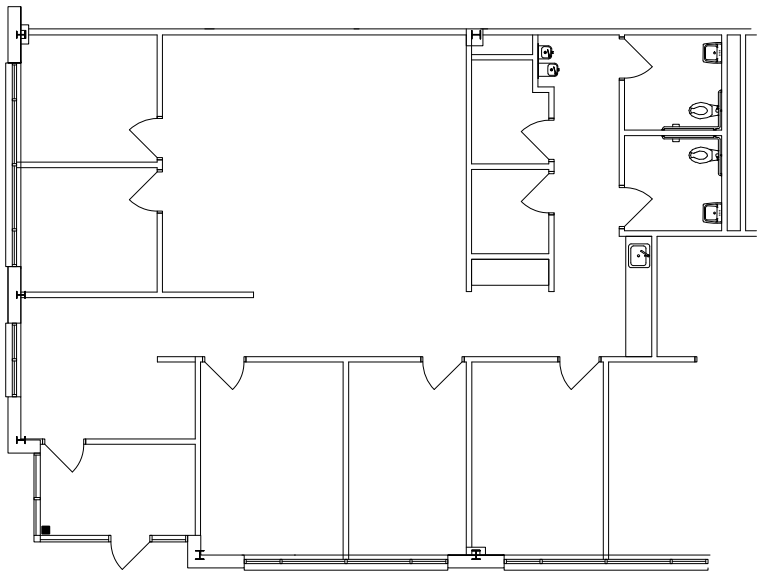


Available Suites

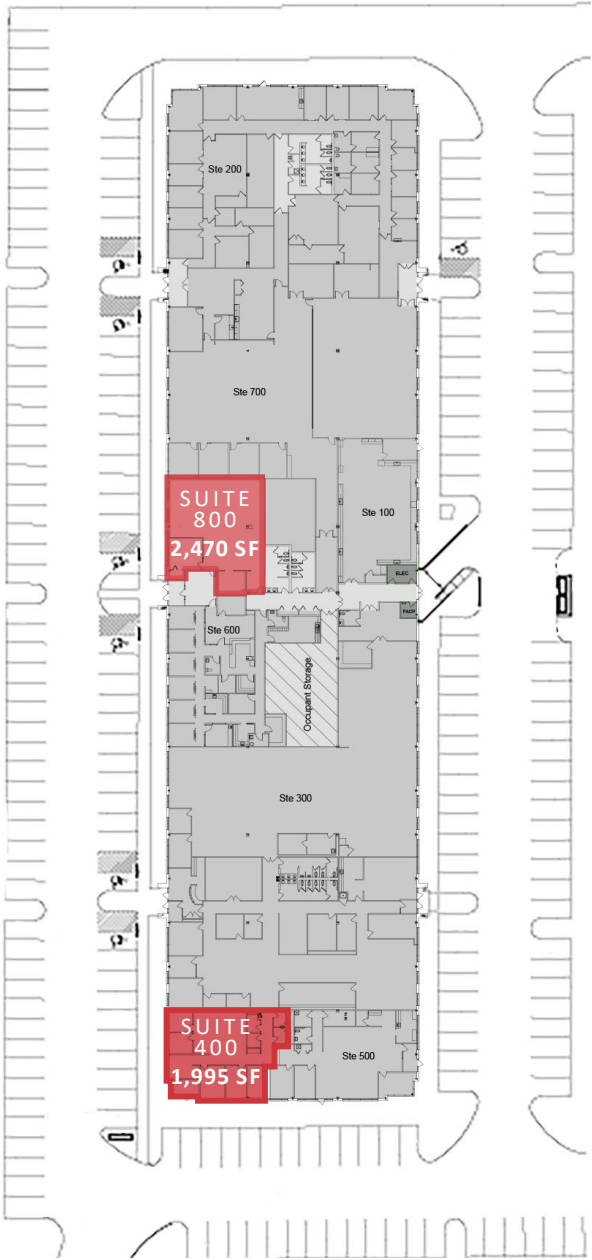
SUITE 800
2,470 SF



SUITE 400
1,995 SF



BUILDING / SITE PLAN



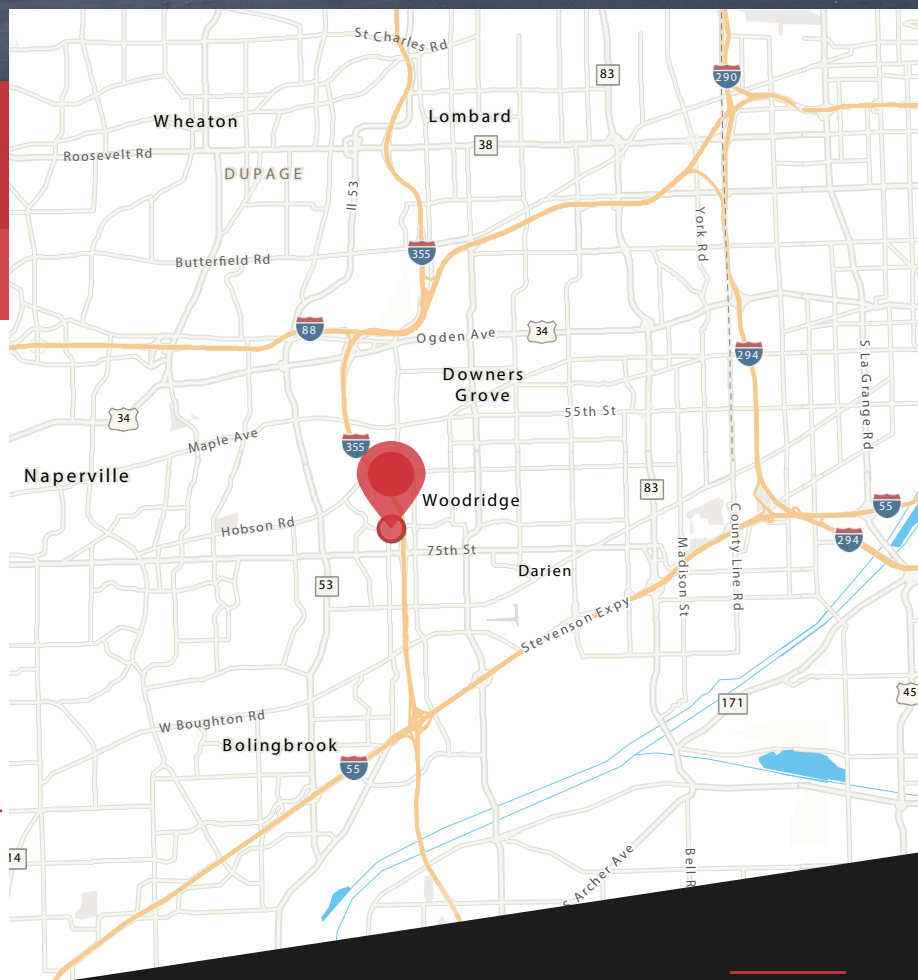


MidPoint One

7125 JANES AVENUE
WOODRIDGE, ILLINOIS

±1,995 SF to ±2,470 SF Office Space for Lease

- Near 4-way interchange at I-355 & 75th Street
- One (1) shared exterior dock & warehouse area
- Direct entry into suite
- 4.0/1,000 parking ratio
- HVAC controlled by tenant



Jim Adler

630 691 0605

jadler@hiffman.com

NAL Hiffman
Commercial Real Estate Services, Worldwide

One Oakbrook Terrace
Suite 400
Oakbrook Terrace, Illinois 60181
+1 630 932 1234

hiffman.com