



5325 North 84th Street - Milwaukee, WI

Property Features

- Rare wooded ± 30.05 -acre development opportunity within the City of Milwaukee
- Total site consists of 30.05 acres, including approximately 8.85 acres of developable land, with the remaining 21.2 acres subject to an 11-year environmental easement
- Frontage along North 84th Street with easy access to major roads and highways

Details

Rare opportunity to own ± 30.05 acres in the City of Milwaukee, including approximately ± 8.85 acres identified for future development on preliminary plans. This unique parcel combines development potential with natural landscape features, creating an attractive opportunity for investors, developers, or long-term land holders seeking size, location, and future upside.

PRICE

\$1,000,000

Acres

+/- 30.05 Acres

Zoning

TL

Parcel #

1860561000

For more information:

Ryan Beitz

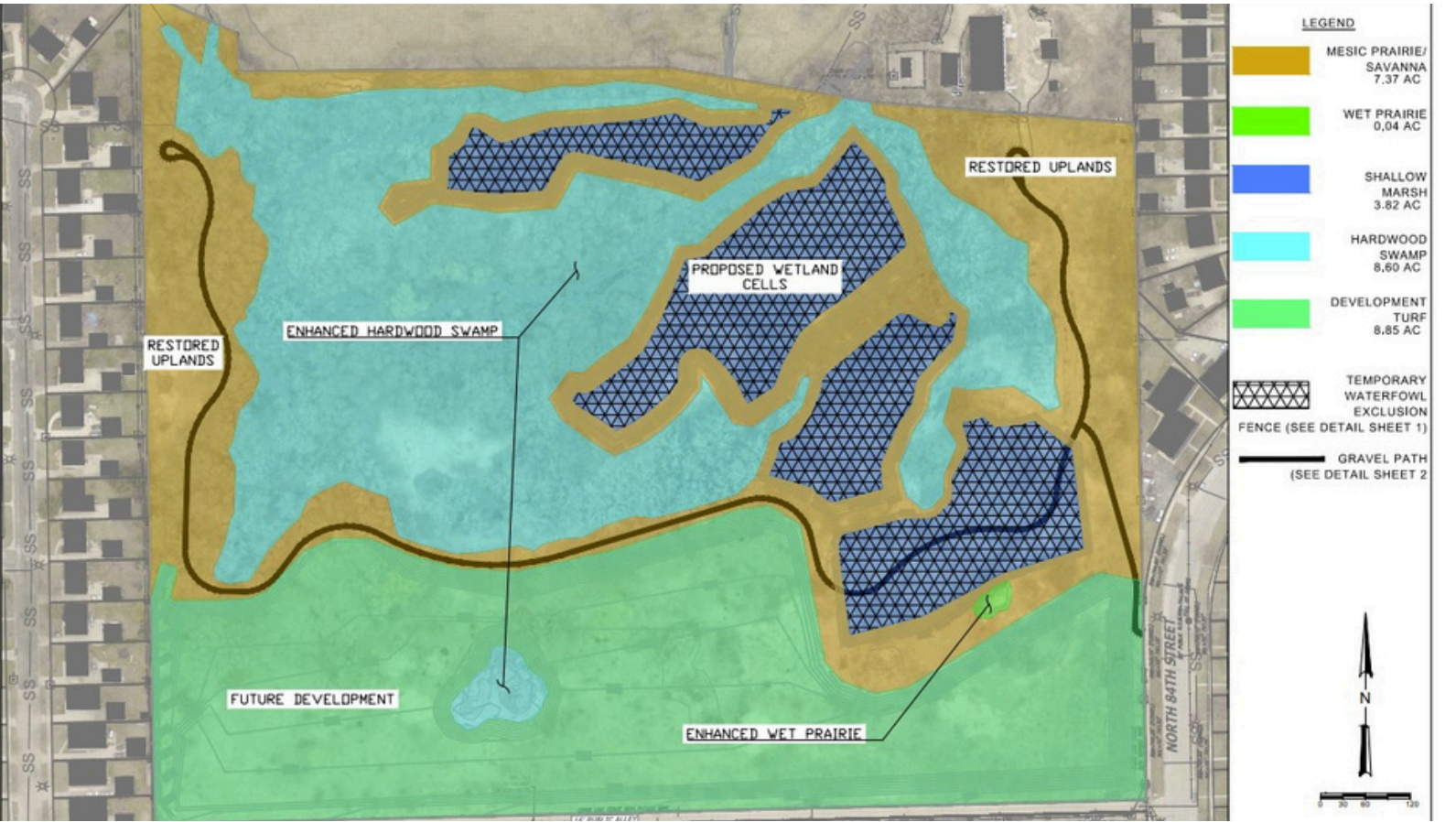
414.424.3530 / ryanb@naipfefferle.com

Josiah Barwick

414.424.2672 / josiahb@naipfefferle.com



- Site has stormwater infrastructure in place to meet all stormwater requirements for future development
- This site has been largely cleared of wooded areas



Demographics (1, 3 & 5 Mile Radius)

The trade area demonstrates stable and modest population growth through 2030, with the 3-mile radius increasing from approximately 126,900 residents in 2020 to 128,500 by 2030, while household growth remains positive as households rise from 49,257 to 49,730 over the same period. Median age in the core 3-mile radius is 34.9, reflecting a relatively young and active consumer base supported by steady long-term residential demand.

Income levels indicate solid purchasing power, with average household income reaching approximately \$72,200 within 3 miles and exceeding \$81,600 within 5 miles. Median household income ranges from roughly \$55,500 in the 3-mile radius to \$58,500 in the 5-mile radius, while total specified consumer spending is substantial at \$1.2 billion within 3 miles and \$3.1 billion within 5 miles, supporting strong retail and service poten

POPULATION

1 MILE:	19,504
3 MILES:	128,161
5 MILES:	310,332

AVERAGE HOUSEHOLDS

1 MILE:	7,099
3 MILES:	49,642
5 MILES:	124,086

EMPLOYEES

1 MILE:	2,635
3 MILES:	28,602
5 MILES:	111,946

BUSINESSES

1 MILE:	343
3 MILES:	3,390
5 MILES:	15,759

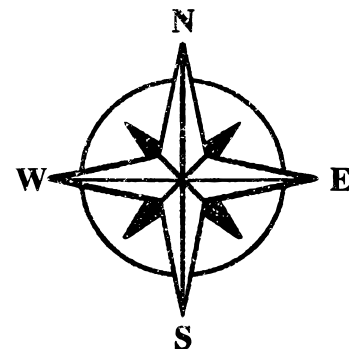
AVERAGE INCOME

1 MILE:	\$59,389
3 MILES:	\$72,227
5 MILES:	\$81,627

Retail Map



- Strategically located retail land in Milwaukee's northwest submarket
- Just minutes from Timmerman Airport, supporting business and commuter traffic
- Strong access to Hwy 41, Silver Spring Dr, and Hampton Ave
- Surrounded by established residential neighborhoods, driving daily consumer demand
- Proximity to national retailers, dining, and services
- Near employment and light industrial base, ideal for convenience and service retail
- Excellent visibility and easy ingress/egress



For more information: Ryan Beitz

414.424.3530 / ryanb@naipfefferle.com

Josiah Barwick

414.424.2672 / josiahb@naipfefferle.com

2725 S Moorland Road
New Berlin, WI 53151

414.424.8200 / naipfefferle.com

STATE OF WISCONSIN BROKER DISCLOSURE



Wisconsin law requires all real estate licensees to give the following information about brokerage services to prospective customers.

Prior to negotiating on your behalf the Brokerage firm, or an agent associated with the firm, must provide you the following disclosure statement.

Disclosure to Customers

You are a customer of NAI Pfefferle (hereinafter Firm). The Firm is either an agent of another party in the transaction or a subagent of another firm that is the agent of another party in the transaction. A broker or a salesperson acting on behalf of the Firm may provide brokerage services to you. Whenever the Firm is providing brokerage services to you, the Firm and its brokers and salespersons (hereinafter Agents) owe you, the customer, the following duties:

- The duty to provide brokerage services to you fairly and honestly.
- The duty to exercise reasonable skill and care in providing brokerage services to you.
- The duty to provide you with accurate information about market conditions within a reasonable time if you request it, unless disclosure of the information is prohibited by law.
- The duty to disclose to you in writing certain Material Adverse Facts about a Property, unless disclosure of the information is prohibited by law.
- The duty to protect your confidentiality. Unless the law requires it, the Firm and its Agents will not disclose your confidential information or the confidential information of other parties.
- The duty to safeguard trust funds and other property held by the Firm or its Agents.
- The duty, when negotiating, to present contract proposals in an objective and unbiased manner and disclose the advantages and disadvantages of the proposals.

Please review this information carefully. An Agent of the Firm can answer your questions about brokerage services, but if you need legal advice, tax advice, or a professional home inspection, contact an attorney, tax advisor, or home inspector. This disclosure is required by section 452.135 of the Wisconsin statutes and is for information only. It is a plain-language summary of the duties owed to a customer under section 452.133(1) of the Wisconsin statutes.

Confidentiality Notice to Customers

The Firm and its Agents will keep confidential any information given to the Firm or its Agents in confidence, or any information obtained by the Firm or its Agents that a reasonable person would want to be kept confidential, unless the information must be disclosed by law or you authorize the Firm to disclose particular information. The Firm and its Agents shall continue to keep the information confidential after the Firm is no longer providing brokerage services to you.

No representation is made as to the legal validity of any provision or the adequacy of any provision in any specific transaction.

The following information is required to be disclosed by law:

1. Material Adverse Facts, as defined in section 452.01(5g) of the Wisconsin Statutes (see definition below).
2. Any facts known by the Firm or its Agents that contradict any information included in a written inspection report on the property or real estate that is the subject of the transaction.

To ensure that the Firm and its Agents are aware of what specific information you consider confidential, you may list that information below or provide that information to the Firm or its Agents by other means. At a latertime, you may also provide the Firm or its Agents with other information you consider to be confidential.

CONFIDENTIAL INFORMATION

NON-CONFIDENTIAL INFORMATION

(the following information may be disclosed to the Firm and its Agents)

(Insert information you authorize to be disclosed, such as financial qualification information.)

Definition of Material Adverse Facts

A "Material Adverse Fact" is defined in Wis. Stat. 452.01(5g) as an Adverse Fact that a party indicates is of such significance, or that is generally recognized by a competent licensee as being of such significance to a reasonable party, that it affects or would affect the party's decision to enter into a contract or agreement concerning a transaction or affects or would affect the party's decision about the terms of such a contract or agreement.

An "Adverse Fact" is defined in Wis. Stat. 452.01(1e) as a condition or occurrence that a competent licensee generally recognizes will significantly and adversely affect the value of the property, significantly reduce the structural integrity of improvements to real estate, or present a significant health risk to occupants of the property; or information that indicates that a party to a transaction is not able to or does not intend to meet his or her obligations under a contract or agreement made concerning the transaction.

Notice About Sex Offender Registry

You may obtain information about the sex offender registry and persons registered with the registry by contacting the Wisconsin Department of Corrections on the Internet at <http://www.doc.wi.gov> or by telephone at 608-240-5830.