

PIN: 0217A00080000000

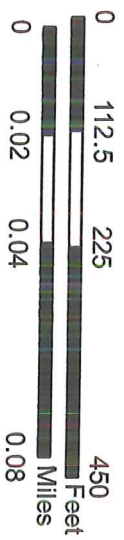


### LEGEND

- Parcels
- LotLines
- Streets
- Municipalities
- Image**
- Red: Band\_1
- Green: Band\_2
- Blue: Band\_3

This map is for informational purposes only.  
 Parcel information is provided from the  
 Office of Property Assessments in Allegheny County.

Content and availability are subject to change. Property characteristics and values change due to a variety of factors such as court rulings, municipality permit processing and subdivision plans. Excludes name and contact information for property owners, as required by Ordinance 3478-07. For additional information, call the Allegheny County GIS Help Desk at (412) 350-4774 or email at GISHelp@AlleghenyCounty.US.



WGSR84 Web Mercator

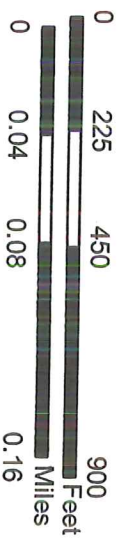




### LEGEND

- Parcels
- Lotlines
- Streets
- Municipalities
- Image**
- Red: Band\_1
- Green: Band\_2
- Blue: Band\_3

This map is for informational purposes only. Parcel information is provided from the Office of Property Assessments in Allegheny County. Content and availability are subject to change. Property characteristics and values change due to a variety of factors such as court rulings, municipality permit processing and subdivision plans. Excludes name and contact information for property owners, as required by Ordinance 3478-07. For additional information, call the Allegheny County GIS Help Desk at (412) 350-4774 or email at GISHelp@AlleghenyCounty.US.



WGS84 Web Mercator





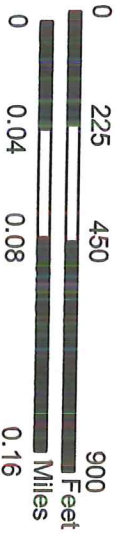
**LEGEND**

- Parcels
- Lotlines
- Streets
- Municipalities

**Image**

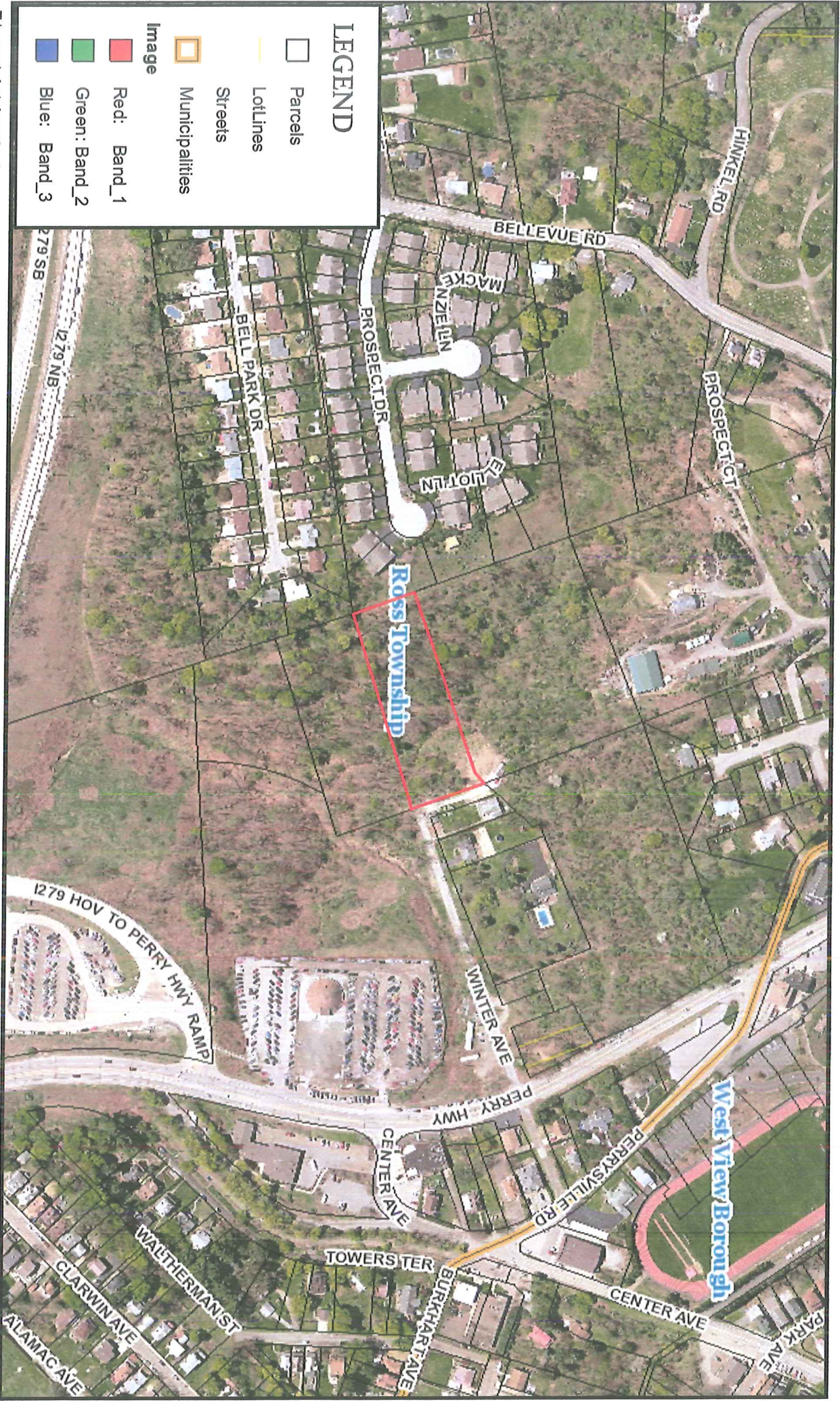
- Red: Band\_1
- Green: Band\_2
- Blue: Band\_3

This map is for informational purposes only. Parcel information is provided from the Office of Property Assessments in Allegheny County. Content and availability are subject to change. Property characteristics and values change due to a variety of factors such as court rulings, municipality permit processing and subdivision plans. Excludes name and contact information for property owners, as required by Ordinance 34-78-07. For additional information, call the Allegheny County GIS Help Desk at (412) 350-4774 or email at GISHelp@AlleghenyCounty.US



WGS84 Web Mercator





### LEGEND

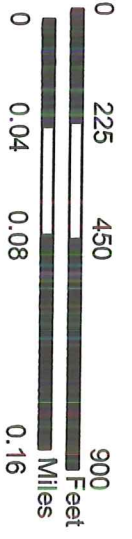
- Parcels
- Lotlines
- Streets
- Municipalities

Image

- Red: Band\_1
- Green: Band\_2
- Blue: Band\_3

This map is for informational purposes only.

Parcel information is provided from the Office of Property Assessments in Allegheny County. Content and availability are subject to change. Property characteristics and values change due to a variety of factors such as court rulings, municipality permit processing and subdivision plans. Excludes name and contact information for property owners, as required by Ordinance 3478-07. For additional information, call the Allegheny County GIS Help Desk at (412) 350-4774 or email at GISHelp@Allegheny County. US.



WGS84 Web Mercator