

**For Sub-Lease | 9220 Foster Street Overland Park, KS 66212**  
**1,000 SF Office Space | \$1,957 Per Month Full Service Exc. Janitorial**



- Available w/ 30-Days' Notice
- 3+ Years Remaining on Lease Term
- 5% Annual Increases in Rent
- 2 Private Rooms (1 w/ a Sink), 1 Private Bathroom, Bull Pen (28' x 18')
- Additional 1,000 SF Unfinished Basement for Storage with Walkout Door
- 7 Reserved Parking + Additional Parking Available
- Lots of Natural Light
- Located NW of 95th and Metcalf

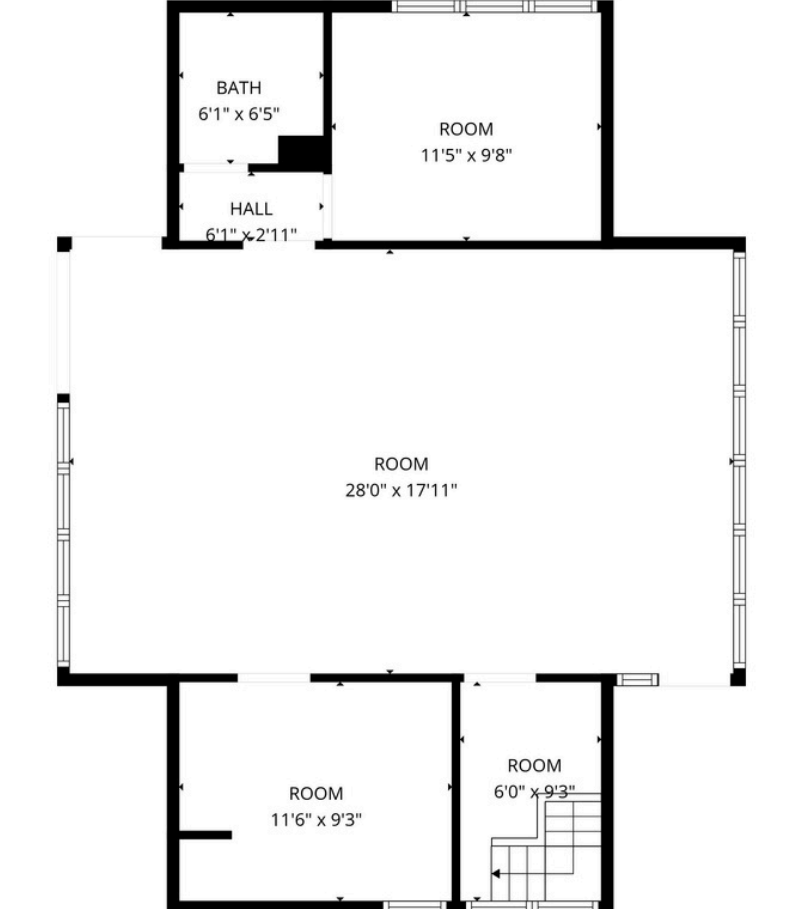


**Josh Haith**  
**Josh@Haith.com**  
**O: (913) 888-3456 x 7**  
**www.Haith.com**



**David Gunter**  
**DGunter@Haith.com**  
**O: (913) 888-3456 x 8**  
**M: (913) 265-8029**

**For Sub-Lease | 9220 Foster Street Overland Park, KS 66212**  
**1,000 SF Office Space | \$1,957 Per Month Full Service Exc. Janitorial**



**Josh Haith**  
Josh@Haith.com  
O: (913) 888-3456 x 7  
www.Haith.com



**David Gunter**  
DGunter@Haith.com  
O: (913) 888-3456 x 8  
M: (913) 265-8029

**For Sub-Lease | 9220 Foster Street Overland Park, KS 66212**  
**1,000 SF Office Space | \$1,957 Per Month Full Service Exc. Janitorial**



**Excellent  
Overland Park  
Location Near  
91st & Metcalf  
Ave**



I-69	2.0 Miles
I-35	3.5 Miles

**Josh Haith**  
**Josh@Haith.com**  
**O: (913) 888-3456 x 7**  
**www.Haith.com**



**David Gunter**  
**DGunter@Haith.com**  
**O: (913) 888-3456 x 8**  
**M: (913) 265-8029**