

**1630 14TH ST NW, WASHINGTON, DC 20006**

**1630 14TH ST: AVAILABLE  
7,200 SF SECOND FLOOR**

**BOUTIQUE OFFICE SPACE FOR LEASE! · AVAILABLE: SECOND FLOOR 7,200 SF**

**LOCATED AT THE HEART OF THE 14TH ST CORRIDOR**

**PROUDLY  
REPRESENTED BY**

**KELLY SILVERMAN**  
240 793 6821  
Kelly.Silverman@cbre.com

**GARY TAUBIN**  
240 447 9707  
Gary.Taubin@cbre.com

**CBRE**



0.25 | 0.5 | 1 Mile

# Daytime

## POPULATION

5,797 | 33,092 | 253,813

# Employees

## PLACE OF WORK

4,401 | 23,420 | 255,010



# Housing

UNIT COUNT

1,722 | 6,325 | 16,621

## Education

BACHELORS DEGREE +

93.8% | 87.6% | 85.9%



## Average Income

HOUSEHOLD

\$223K | \$185K | \$183K

## Median Age

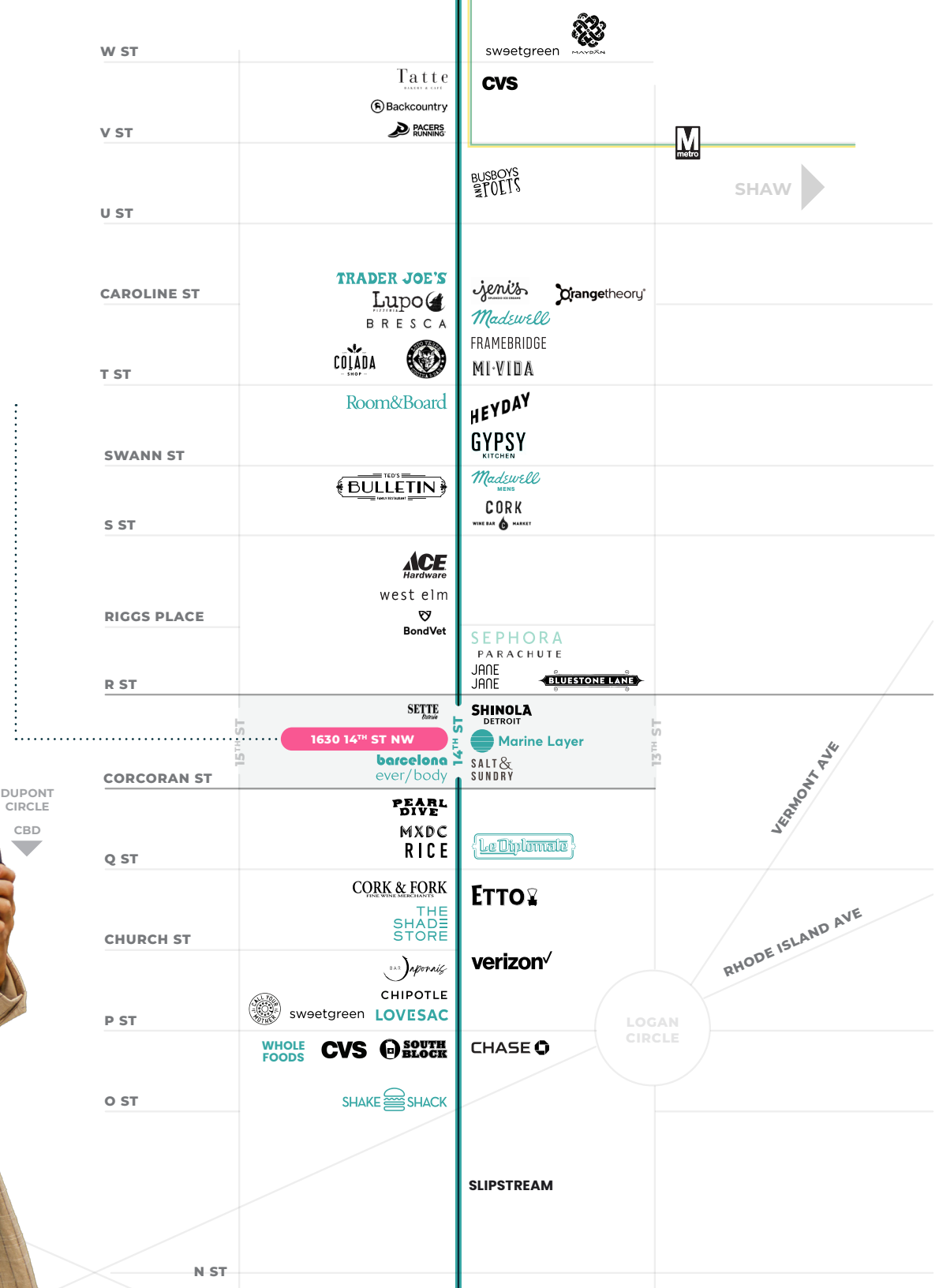
2023

35.2 | 34.2 | 33.6

**THE  
HEART**  
OF 14TH  
STREET




**DUPONT  
CIRCLE**  
**CBD**



# Main & Main

## PROPERTY HIGHLIGHTS

- + Flagship location in the heart of D.C.'s 14th Street Corridor, offering.
- + Exceptional brand visibility along the 14th Street Corridor, with impressive foot traffic.
- + Conveniently situated within walking distance of Whole Foods + Trader Joe's for easy grocery shopping.
- + Unmatched signage opportunity



Proposed Exterior Facade



S ST



west elm



saatva



Residential

SEPHORA

JANE  
JANE

FAHERTY **BLUESTONE LANE**

R ST



1630 14<sup>TH</sup> ST NW

barcelona  
ever/body

SHINOLA  
DETROIT



SALT &  
SUNDRY

14<sup>TH</sup> STREET

CORCORAN ST

PEARL  
DIVE

MXDC

RICE

John Wesley African Methodist  
Episcopal Zion Church



Q ST



CORK & FORK  
FINE WINE MERCHANTS

THE  
SHADE  
STORE

ETTO





# Proposed Exterior Facade



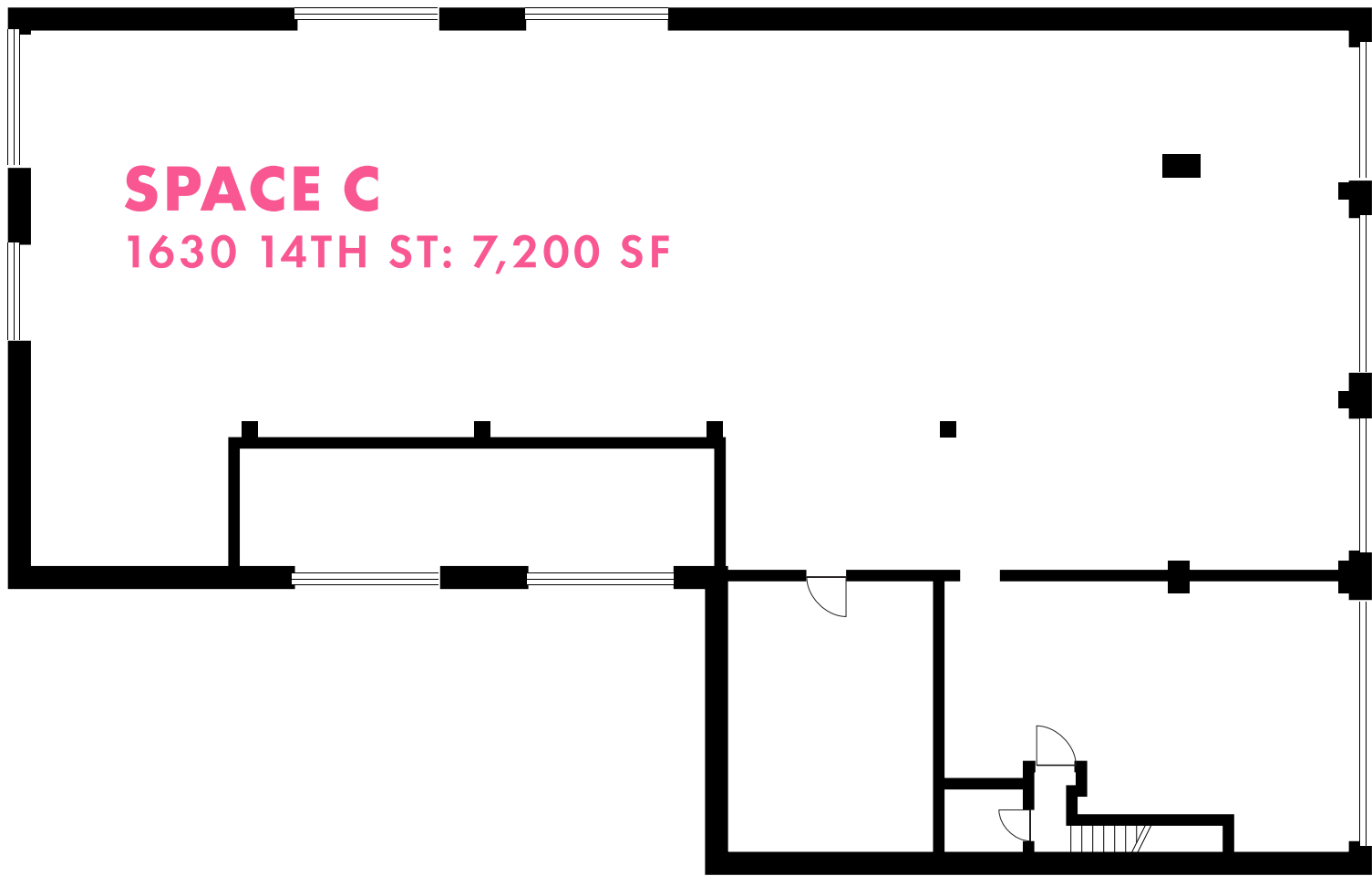


# Interior Photos

1630 14TH ST | SECOND FLOOR



SECOND FLOOR



14TH STREET

# Space C

**1630 14TH ST**  
AVAILABLE

- FRONTAGE** | 26' - 65'3"
- TIMING** | IMMEDIATE
- SECOND FLOOR SF** | 7,200 SF
- TOTAL SF\*** | **7,200 SF**

© 2025 CBRE, Inc. All rights reserved. This information has been obtained from sources believed reliable, but has not been verified for accuracy or completeness. You should conduct a careful, independent investigation of the property and verify all information. Any reliance on this information is solely at your own risk. CBRE and the CBRE logo are service marks of CBRE, Inc. All other marks displayed on this document are the property of their respective owners, and the use of such logos does not imply any affiliation with or endorsement of CBRE. Photos herein are the property of their respective owners. Use of these images without the express written consent of the owner is prohibited.