

16600 E Thirteen Mile

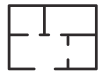
Roseville, MI

- 24,750 Sq. Ft. For Sale
- Clean Facility
- Beautiful Offices
- Entire Shop is Craned
- Power Well Distributed
- Roof Less Than 5 Years Old

INDUSTRIAL BUILDING FOR SALE



18,200 SF of Factory



6,550 SF of Office



Two 14'x14' Grade Level Doors

FOR MORE INFORMATION:

Tom Jablonski
Senior Vice President
248.637.7794
tjablonski@LMCap.com

Jason Capitani, SIOR, CCIM
Managing Partner
248.637.7684
jcapitani@LMCap.com

248.637.9700 | LMCap.com

Information contained herein was obtained from sources deemed to be reliable but is not guaranteed. Subjects to prior sales, changes of price or withdrawal.



L. MASON CAPITANI

CORFAC INTERNATIONAL

CELEBRATING 60 YEARS

16600 E Thirteen Mile

Roseville, MI



L. MASON CAPITANI

CORFAC INTERNATIONAL

CELEBRATING 60 YEARS

Industrial Property Details:

Details:

Total SF:	24,750 SF
Available SF:	24,750 SF
Office SF:	6,550 SF
Factory SF:	18,200 SF
Zoning:	Industrial
Acres:	2.97
Expandable:	No
Intersection:	13 Mile/Groesbeck
X-Way Distance:	3 Miles to I-696
Parking:	25 Spaces
Year Built:	1968
Year Renovated:	2015
Outside Storage:	Possible
Occupancy:	At Closing

Interior:

Ceiling Height:	25'
Bay Size:	(2) 50'
Restrooms:	5
Crane(s):	(1) 15-Ton, (2) 10-Ton
Underhook:	20'
Power:	Primary
Power Details:	480V 2,000V
Buss Duct:	Throughout
Airlines:	Throughout
Lighting:	T-5
Truckwells:	None
Grade Door:	(2) 14'x14'
Heating:	Tube Radiant
A/C:	Office Only
Sprinklered:	Yes
Floor Drains:	No

Economic

Sale Price:	\$1,925,000
Price/SF:	\$77.78
Taxes:	\$35,825

Notes: 15-ton crane, 25' shop ceiling, buss duct, 50' bays.

248.637.9700 | LMCap.com

Information contained herein was obtained from sources deemed to be reliable but is not guaranteed. Subjects to prior sales, changes of price or withdrawal.

16600 E Thirteen Mile

Roseville, MI

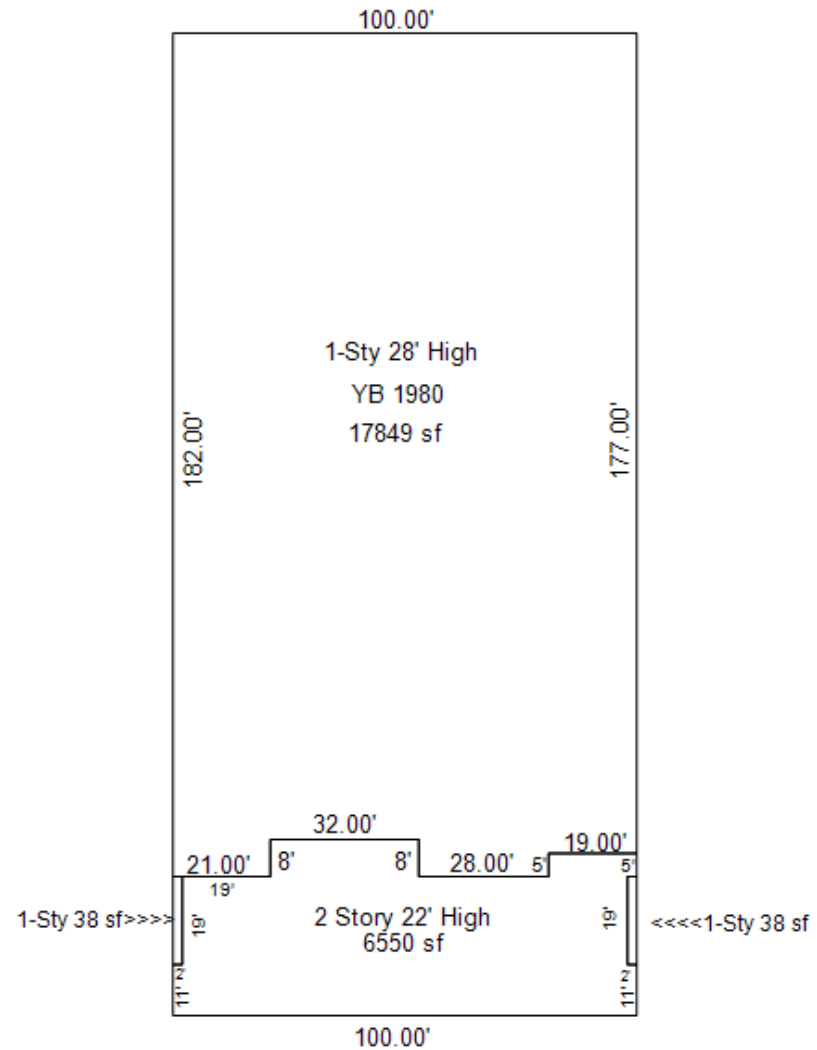
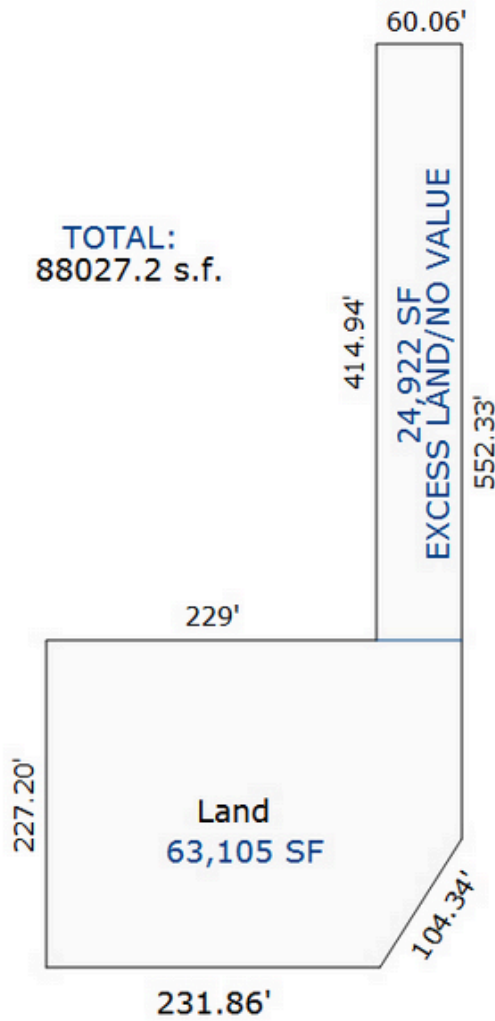


L. MASON CAPITANI

CORFAC INTERNATIONAL

CELEBRATING 60 YEARS

Property Line Drawing & Floor Plan:



248.637.9700 | LMCap.com

Information contained herein was obtained from sources deemed to be reliable but is not guaranteed. Subjects to prior sales, changes of price or withdrawal.

16600 E Thirteen Mile

Roseville, MI



Interior Photos:



248.637.9700 | LMCap.com

Information contained herein was obtained from sources deemed to be reliable but is not guaranteed. Subjects to prior sales, changes of price or withdrawal.

16600 E Thirteen Mile

Roseville, MI



Interior Photos:



248.637.9700 | LMCap.com

Information contained herein was obtained from sources deemed to be reliable but is not guaranteed. Subjects to prior sales, changes of price or withdrawal.

16600 E Thirteen Mile

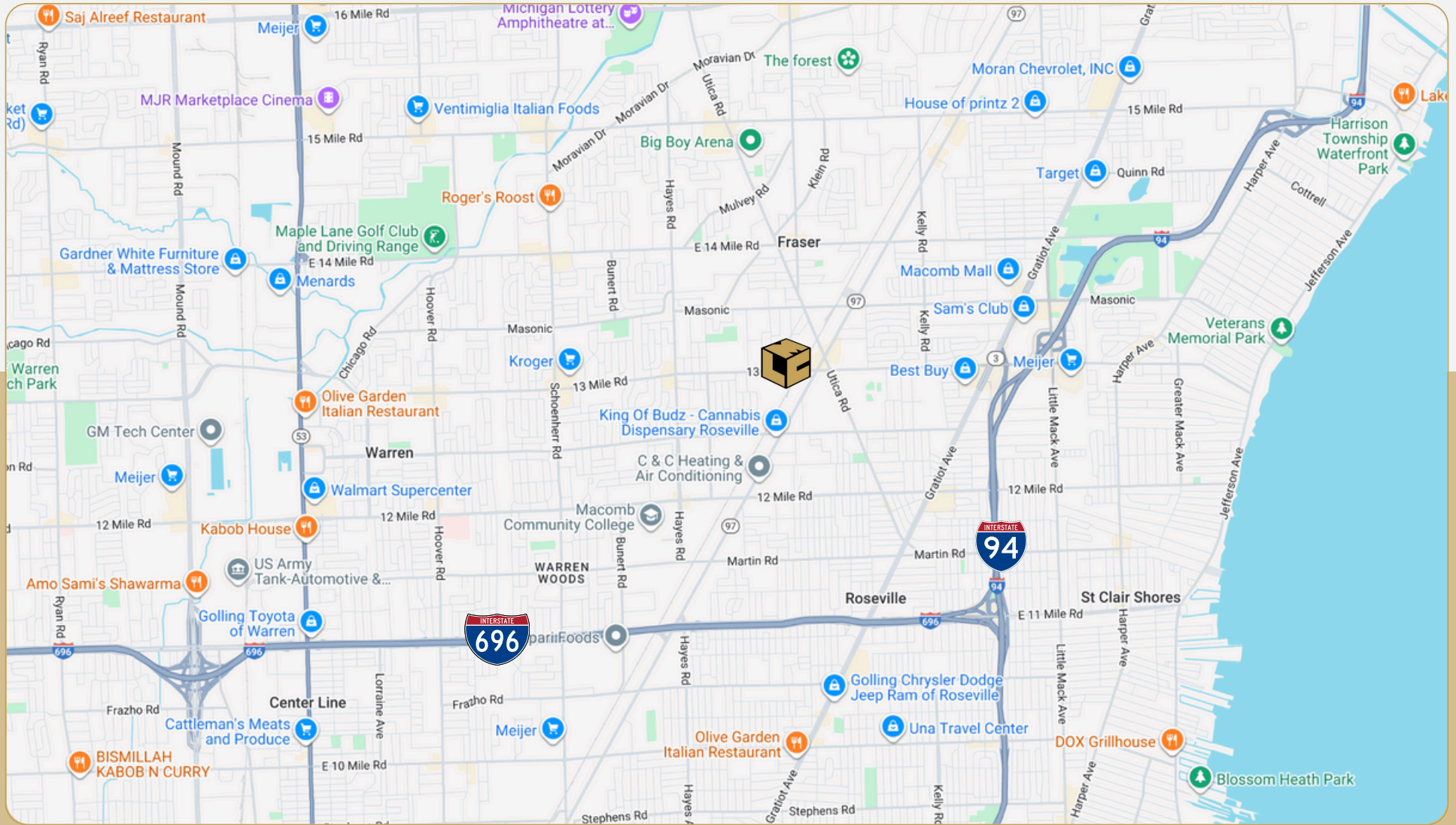
Roseville, MI



L. MASON CAPITANI

CORFAC INTERNATIONAL

CELEBRATING 60 YEARS



248.637.9700 | LMCap.com

Information contained herein was obtained from sources deemed to be reliable but is not guaranteed. Subjects to prior sales, changes of price or withdrawal.