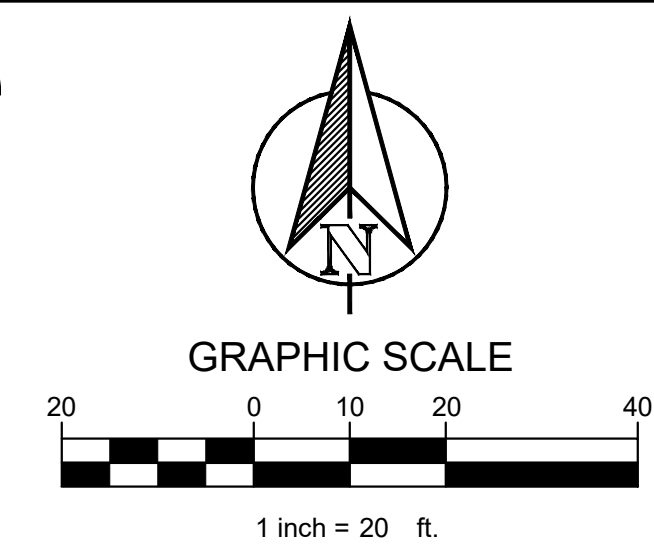
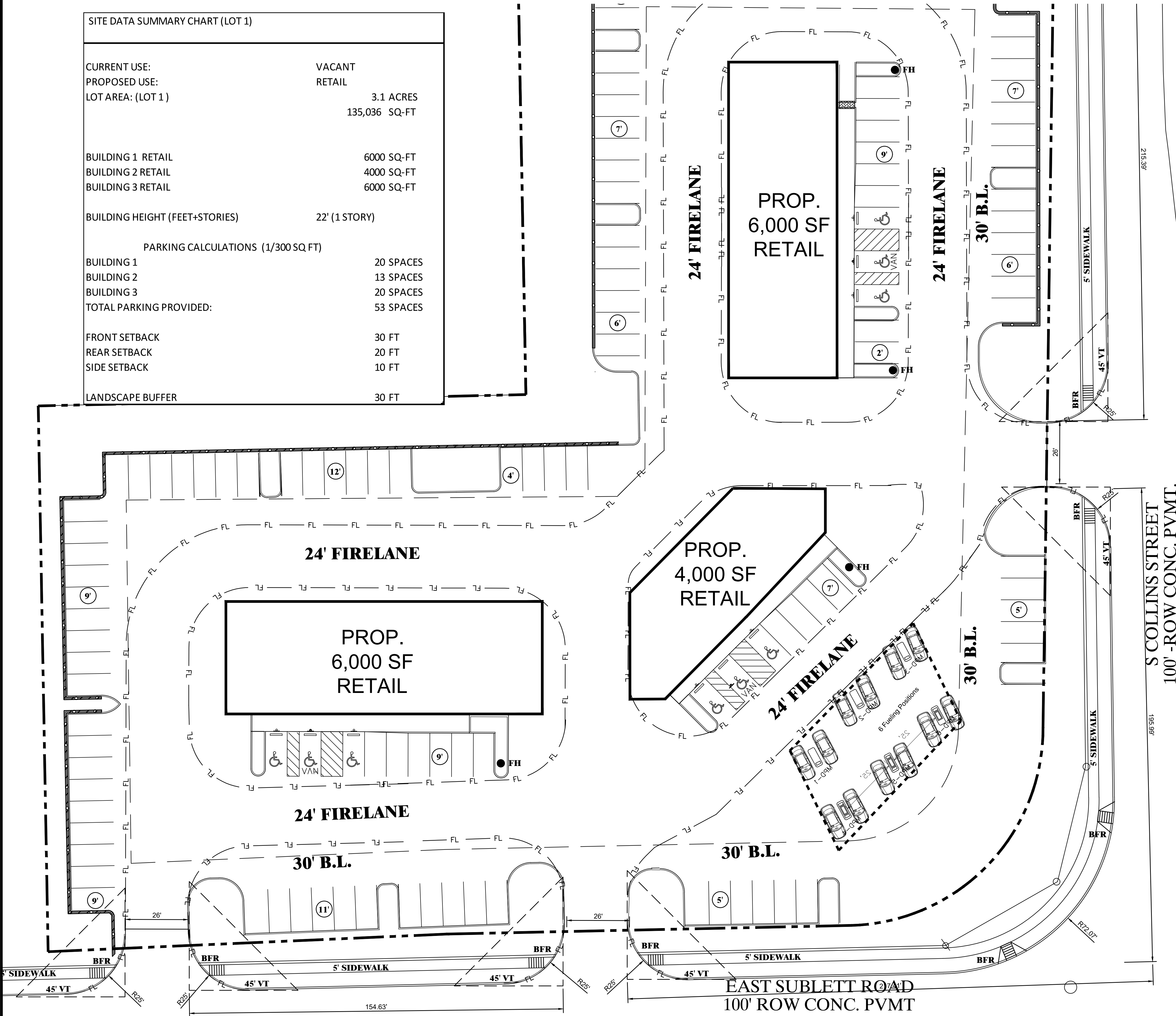


SITE DATA SUMMARY CHART (LOT 1)	
CURRENT USE:	VACANT
PROPOSED USE:	RETAIL
LOT AREA: (LOT 1)	3.1 ACRES 135,036 SQ-FT
BUILDING 1 RETAIL	6000 SQ-FT
BUILDING 2 RETAIL	4000 SQ-FT
BUILDING 3 RETAIL	6000 SQ-FT
BUILDING HEIGHT (FEET+STORIES)	22' (1 STORY)
PARKING CALCULATIONS (1/300 SQ FT)	
BUILDING 1	20 SPACES
BUILDING 2	13 SPACES
BUILDING 3	20 SPACES
TOTAL PARKING PROVIDED:	53 SPACES
FRONT SETBACK	30 FT
REAR SETBACK	20 FT
SIDE SETBACK	10 FT
LANDSCAPE BUFFER	30 FT



PARKING CALCULATIONS	
REQUIRED PARKING: 4 SPACES PER EVERY 1000 SF	60 SPACES (3 ADA)
PROPOSED PARKING	69 SPACES (3 ADA)



PLOTTED BY: HARRY POTTER  
 PLOT DATE: 9/18/2022 10:27 PM  
 LOCATION: C:\USERS\HARRY POTTER\DOWNLOADS\WSITE\_05.DWG  
 LAST SAVED: 9/18/2022 10:26 PM

**S COLLINS TREET & SUBLETT**  
 ARLINGTON, TEXAS

**CONCEPTUAL SITE PLAN**

DESIGN:	ASD
DRAWN:	ASD
CHECKED:	MAM
DATE:	2/22/2016

SHEET  
**C-1**

File No.