

# 1 WOODWARD AVENUE

DETROIT, MICHIGAN

**10,177 - 15,602 RENTABLE SF AVAILABLE FOR SUBLEASE**

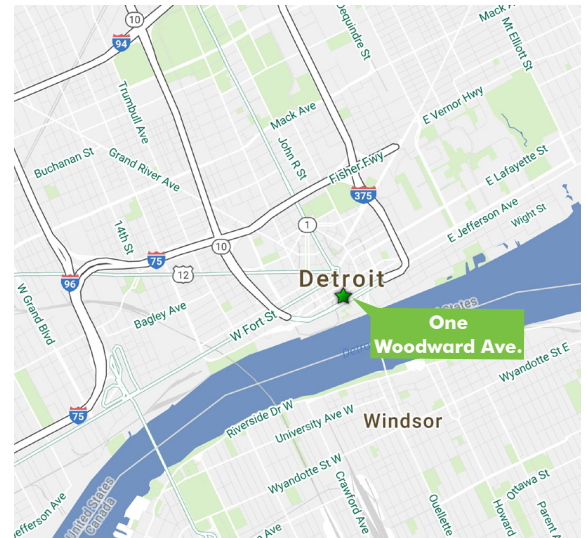


## SUITE DETAILS

- + 10,177 - 15,602 SF available for lease on the 12th floor
- + Term through October 31, 2025
- + Beautiful views of the Detroit River
- + \$22.00 MG + electric
- + Tenant Improvement Allowance available
- + An additional fully furnished 15,000 SF can be made available on the 13th floor

## BUILDING FEATURES

- + Located in the heart of Detroit's business district
- + Amenities include: sundry shop, 24/7 security, beautiful floor to ceiling glass lobby with seating
- + Within walking distance to some of Downtown Detroit's newest and finest restaurants
- + Close proximity to Q-Line and People Mover stations



## CONTACT US

### MARK COLLINS

Executive Vice President  
+1 248 351 2021  
mark.collins@cbre.com

### ANDREW BAINES

Senior Associate  
+1 248 351 2010  
andrew.baines@cbre.com



# 1 WOODWARD AVENUE

DETROIT, MICHIGAN

10,177 - 15,602 RENTABLE SF AVAILABLE FOR SUBLEASE

## RAW PHOTOS



## CONTACT US

### MARK COLLINS

Executive Vice President  
+1 248 351 2021  
mark.collins@cbre.com

### ANDREW BAINES

Senior Associate  
+1 248 351 2010  
andrew.baines@cbre.com

© 2019 CBRE, Inc. This information has been obtained from sources believed reliable. We have not verified it and make no guarantee, warranty or representation about it. Any projections, opinions, assumptions or estimates used are for example only and do not represent the current or future performance of the property. You and your advisors should conduct a careful, independent investigation of the property to determine to your satisfaction the suitability of the property for your needs. Photos herein are the property of their respective owners and use of these images without the express written consent of the owner is prohibited. CBRE and the CBRE logo are service marks of CBRE, Inc. and/or its affiliated or related companies in the United States and other countries. All other marks displayed on this document are the property of their respective owners.

# 1 WOODWARD AVENUE

DETROIT, MICHIGAN

10,177 - 15,602 RENTABLE SF AVAILABLE FOR SUBLEASE

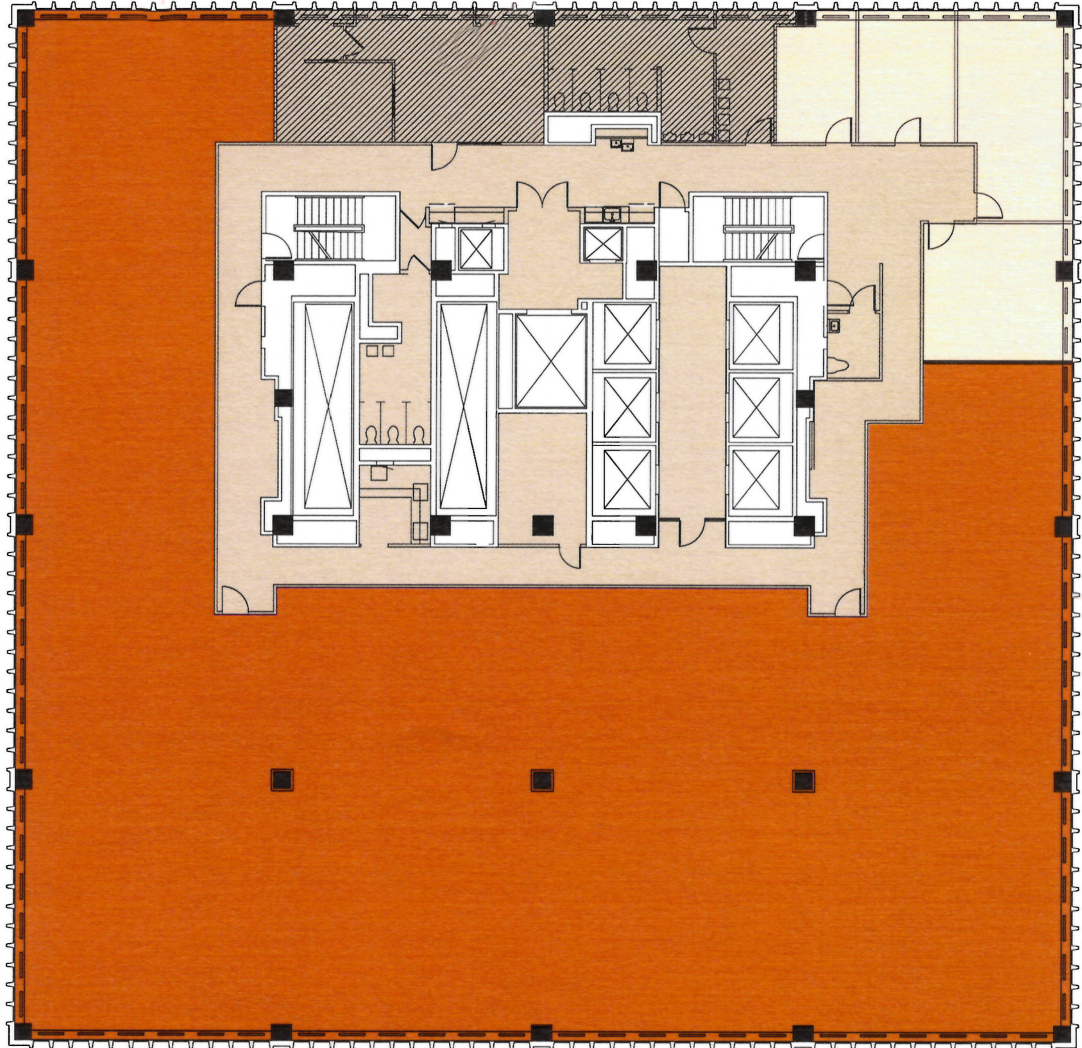
## FLOOR PLAN - ONE WOODWARD 12TH FLOOR

### Single Floor User\*

13,807 USF  
15,602 RSF

### Partial Floor User\*

8,850 USF  
10,177 RSF



## CONTACT US

### MARK COLLINS

Executive Vice President  
+1 248 351 2021  
mark.collins@cbre.com

### ANDREW BAINES

Senior Associate  
+1 248 351 2010  
andrew.baines@cbre.com

© 2019 CBRE, Inc. This information has been obtained from sources believed reliable. We have not verified it and make no guarantee, warranty or representation about it. Any projections, opinions, assumptions or estimates used are for example only and do not represent the current or future performance of the property. You and your advisors should conduct a careful, independent investigation of the property to determine to your satisfaction the suitability of the property for your needs. Photos herein are the property of their respective owners and use of these images without the express written consent of the owner is prohibited. CBRE and the CBRE logo are service marks of CBRE, Inc. and/or its affiliated or related companies in the United States and other countries. All other marks displayed on this document are the property of their respective owners.