

# Office/Flex ★ LEASE

LanCarteCRE.com

2364-2384 N HWY 287, MANSFIELD, TX 76063



Riley Dow  
817-681-2022  
rdow@lancartecre.com

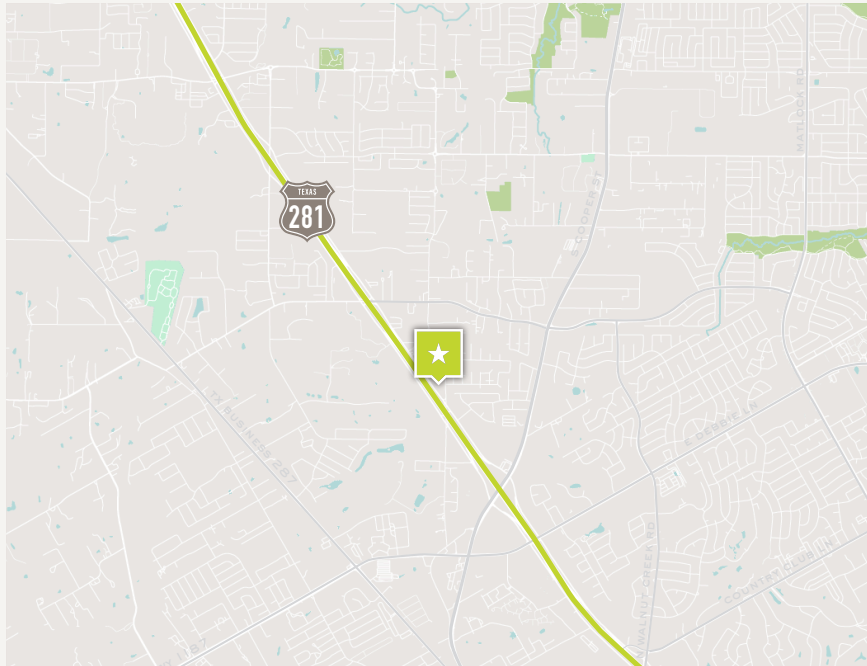
Daniel Shelley  
512-461-5363  
dshelley@lancartecre.com



# Office/Flex ★ LEASE

2364-2384 N HWY 287

LanCarteCRE.com



## PROPERTY FEATURES

- 702 - 5,579 SF Available
- 10 x 12 Grade Level Door
- Hwy 287 Frontage
- Ample Parking
- Professional/Office Park
- Monument Signage Available
- Flex Warehouse/Office

## AVAILABLE SPACES

SUITE 2364-107      **702** SF      OFFICE

SUITE 2364-113      **743** SF      OFFICE

SUITE 2384-208      **1,334** SF      OFFICE

SUITE 2384-212      **1,227** SF      OFFICE

SUITE 2384-220      **2,800** SF      OFFICE

## LOCATION OVERVIEW

This property offers excellent connectivity to the Dallas–Fort Worth metroplex with immediate access to US-287, and close proximity to Loop 820, TX-360 and I-20.

The U.S. News and World Report released its annual ranking and placed Mansfield as the 9th best city to live in Texas and 27th in the country in 2025. The rankings are based on a city's value, desirability, job market, and quality of life.

## LEASING STRUCTURE

## CONTACT BROKER

# Office/Flex ★ LEASE

2364-2384 N HWY 287

LanCarteCRE.com

## INTERIOR PHOTOS

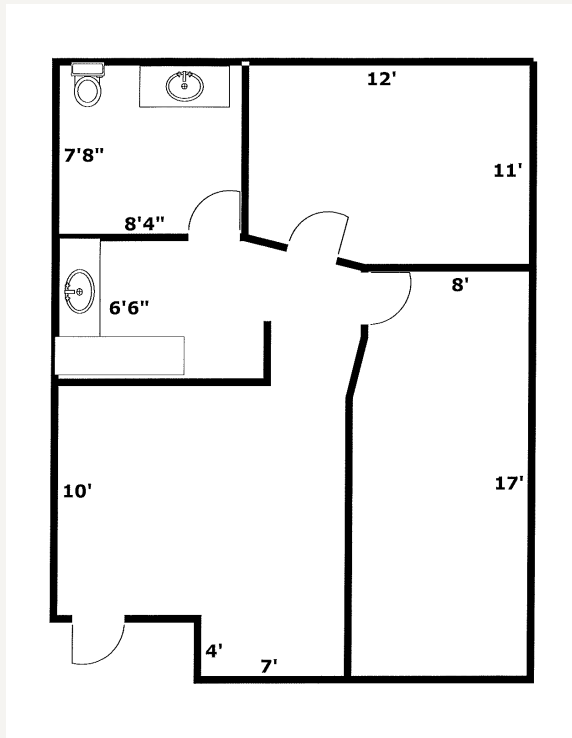


# Office/Flex ★ LEASE

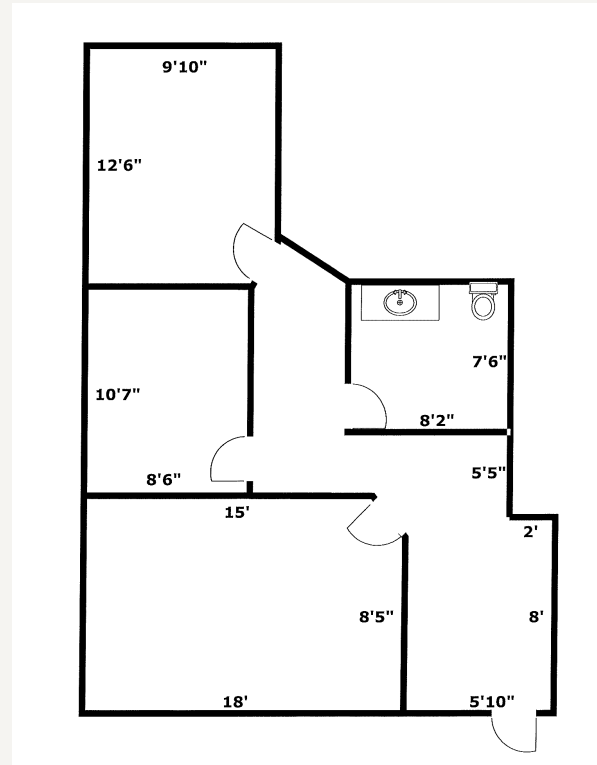
2364-2384 N HWY 287

LanCarteCRE.com

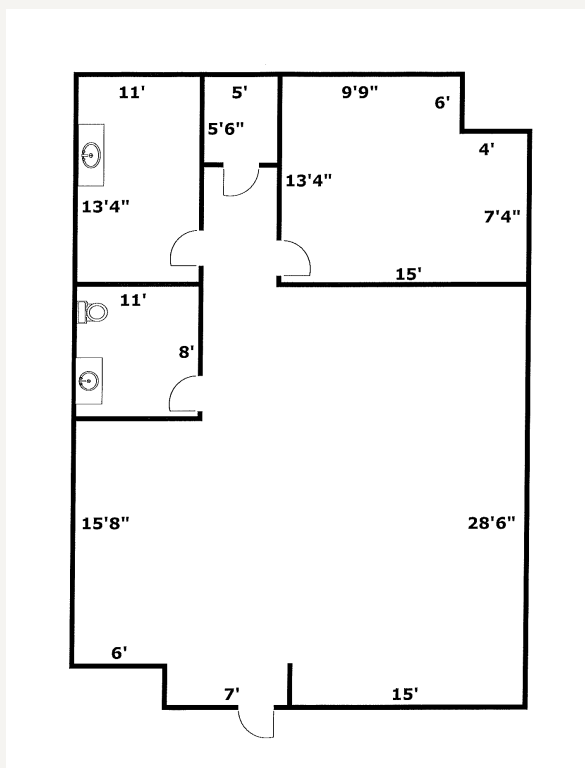
SUITE 107



SUITE 113



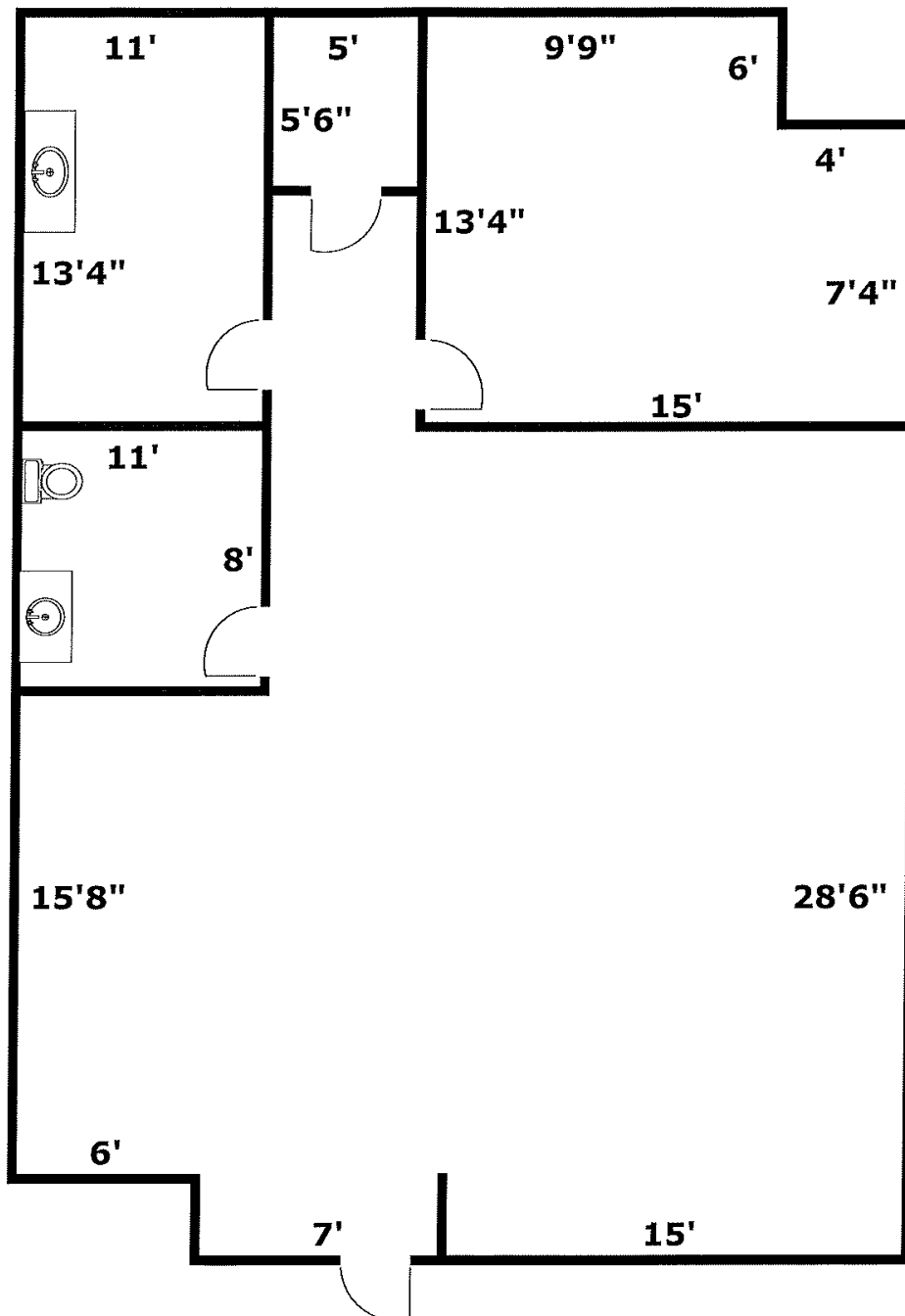
SUITE 208



**Office/Flex ★ LEASE**  
2364-2384 N HWY 287

LanCarteCRE.com

SUITE 220





Office/Flex ★ LEASE  
2364-2384 N HWY 287

LanCarteCRE.com

EXTERIOR PHOTOS







# LANCARTE

## COMMERCIAL

*Relentlessly Pursuing What Matters*

**Riley Dow**

817-681-2022 | [rdow@lancartecre.com](mailto:rdow@lancartecre.com)

**Daniel Shelley**

512-461-5363 | [dshelley@lancartecre.com](mailto:dshelley@lancartecre.com)

The information provided herein was obtained from sources believed to be reliable. However, LanCarte Commercial makes no guaranties, warranties or representations as to the completeness or accuracy thereof. The presentation of this property is submitted subject to errors, omissions, change of price or conditions, prior to sale or lease, or withdrawal without notice. Copyright 2025 LanCarte Commercial Real Estate, LLC.