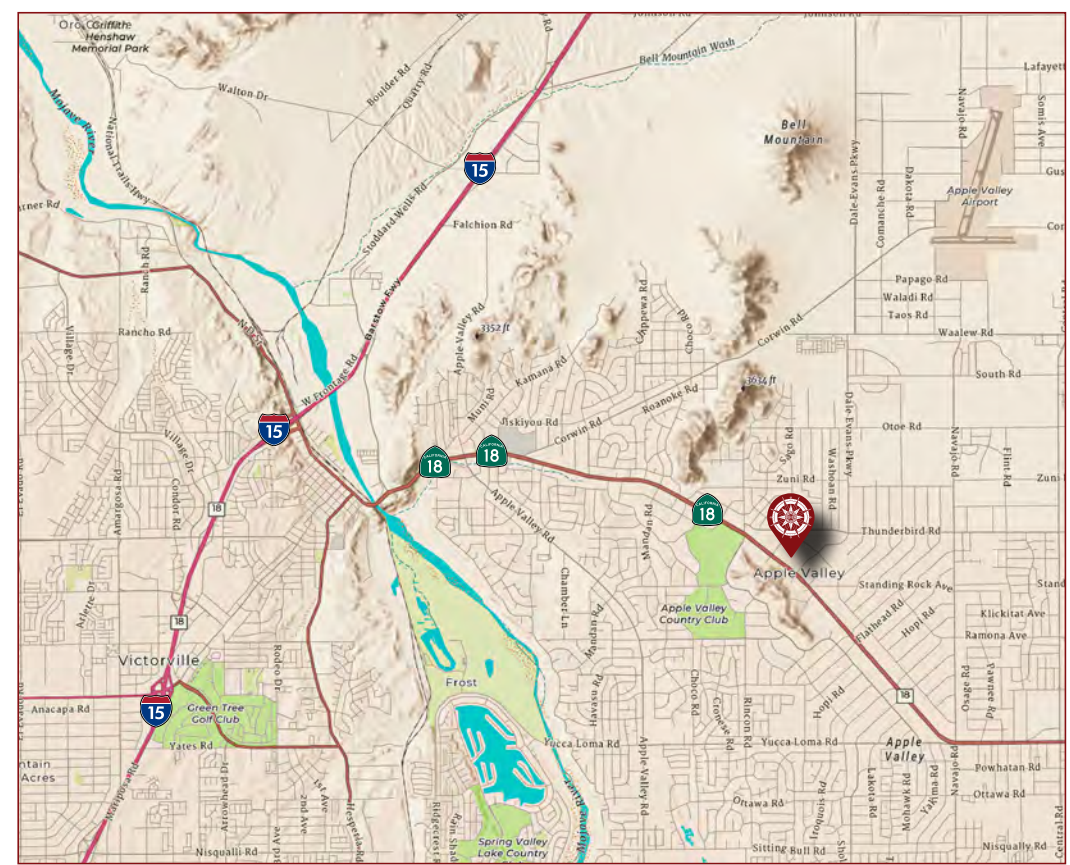


20254
 CA HIGHWAY 18
 APPLE VALLEY
 CALIFORNIA

Apple Valley, *California*

Project Features

- Located at the high traffic retail intersection of CA-Highway 18 and Bass Hill Road
- Prime corner visibility from Highway 18 with over 36,085 CPD
- Building is situated at the corner of the Apple Valley Commons, a 424,000 sf Super Target anchored shopping center
- Co-tenants include: Old Navy, Ross, Dollar Tree, Starbucks, Panda Express, Del Taco, Carl's Jr., Pacific Dental, Verizon, Sally Beauty, UPS, T-Mobile, Waba Grill, Wing Stop, Round Table Pizza, Subway, Juice It Up
- Directly adjacent to existing Walmart, CVS and Albertsons
- In walking proximity to the Town of Apple Valley Civic Center



Ielen Sarkisian
 626.243.5290
 ielen.sarkisian@sdacre.com
 DRE License : 01798055

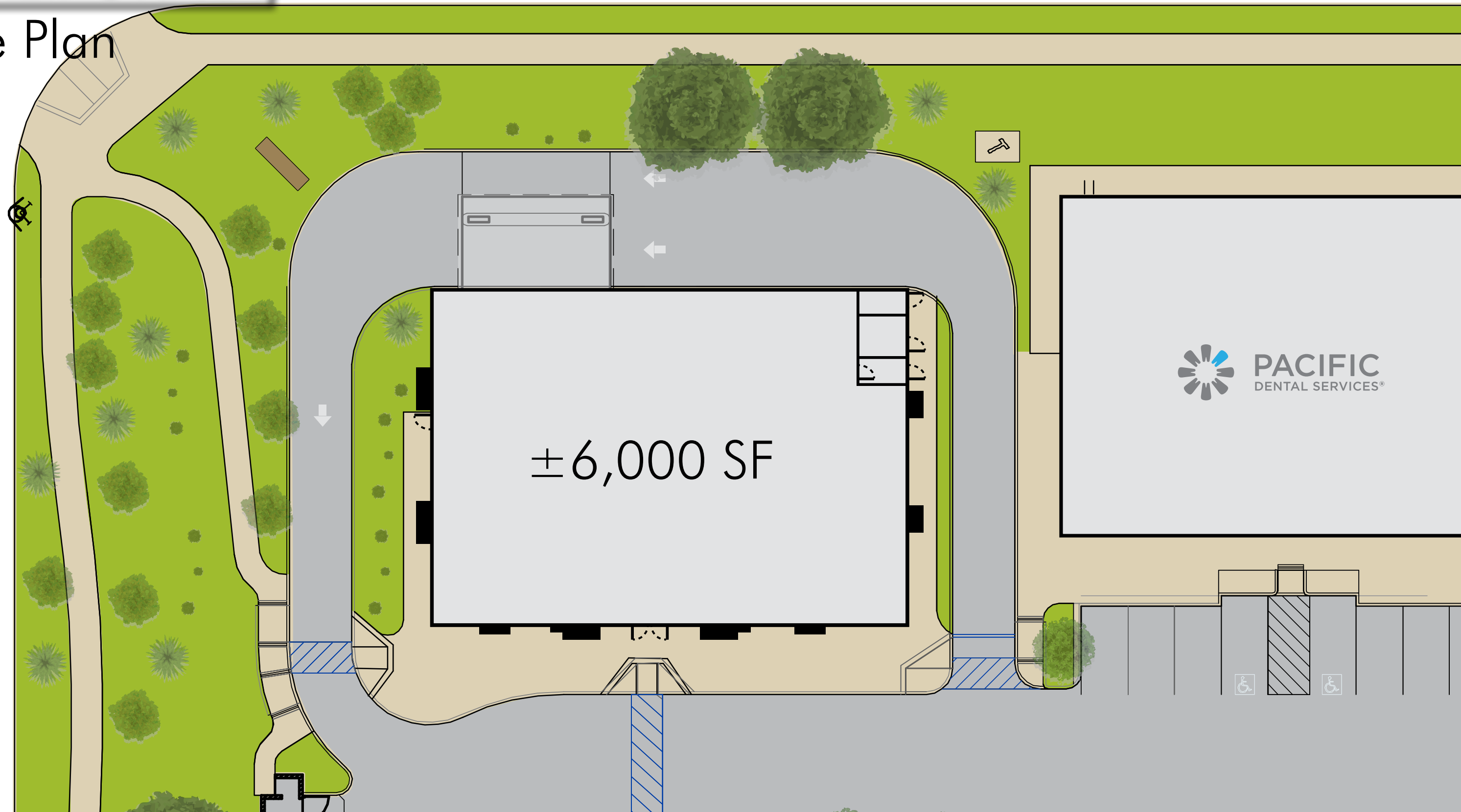
Strategic Development Advisors, Inc. The Information above has been obtained from sources believed reliable. While we do not doubt it's accuracy, we have not verified it and make no guarantee, warranty or representation about it.



20254
CA HIGHWAY 18
APPLE VALLEY
CALIFORNIA

Apple Valley, *California*

Site Plan



20254
CA HIGHWAY 18
APPLE VALLEY
CALIFORNIA

Apple Valley, *California*



Ielen Sarkisian
626.243.5290
ielen.sarkisian@sdacre.com
DRE License : 01798055

Strategic Development Advisors, Inc. The Information above has been obtained from sources believed reliable. While we do not doubt it's accuracy, we have not verified it and make no guarantee, warranty or representation about it.

