



Physicians Mall Medical Office Condo

715 Shaker Drive, Suite 104
Lexington, Kentucky 40504

Property Highlights

- Physicians Mall Entrance #2 Building
- Suite 104: +/-6,613 SF medical office condo
- Includes large waiting area with glass enclosed check-in/out reception area, lab room, large multi-use room, 4 patient rooms, 19 offices and 8 restrooms (includes 3 offices with private restrooms)
- Great location off Harrodsburg Road adjacent to CHI Saint Joseph Health Office Park
- Close proximity to CHI Saint Joseph Health Hospital, Lexington Clinic, University of Kentucky, downtown Lexington and New Circle Road
- Zoned P-1, Professional Office

Offering Summary

Sale Price:	\$489,000 REDUCED
Suite 104:	6,613 SF

For More Information

Al Isaac

President

O: 859 422 4400

alisaac@naiisaac.com | KY #223721



Commercial Real Estate Services, Worldwide.

For Sale

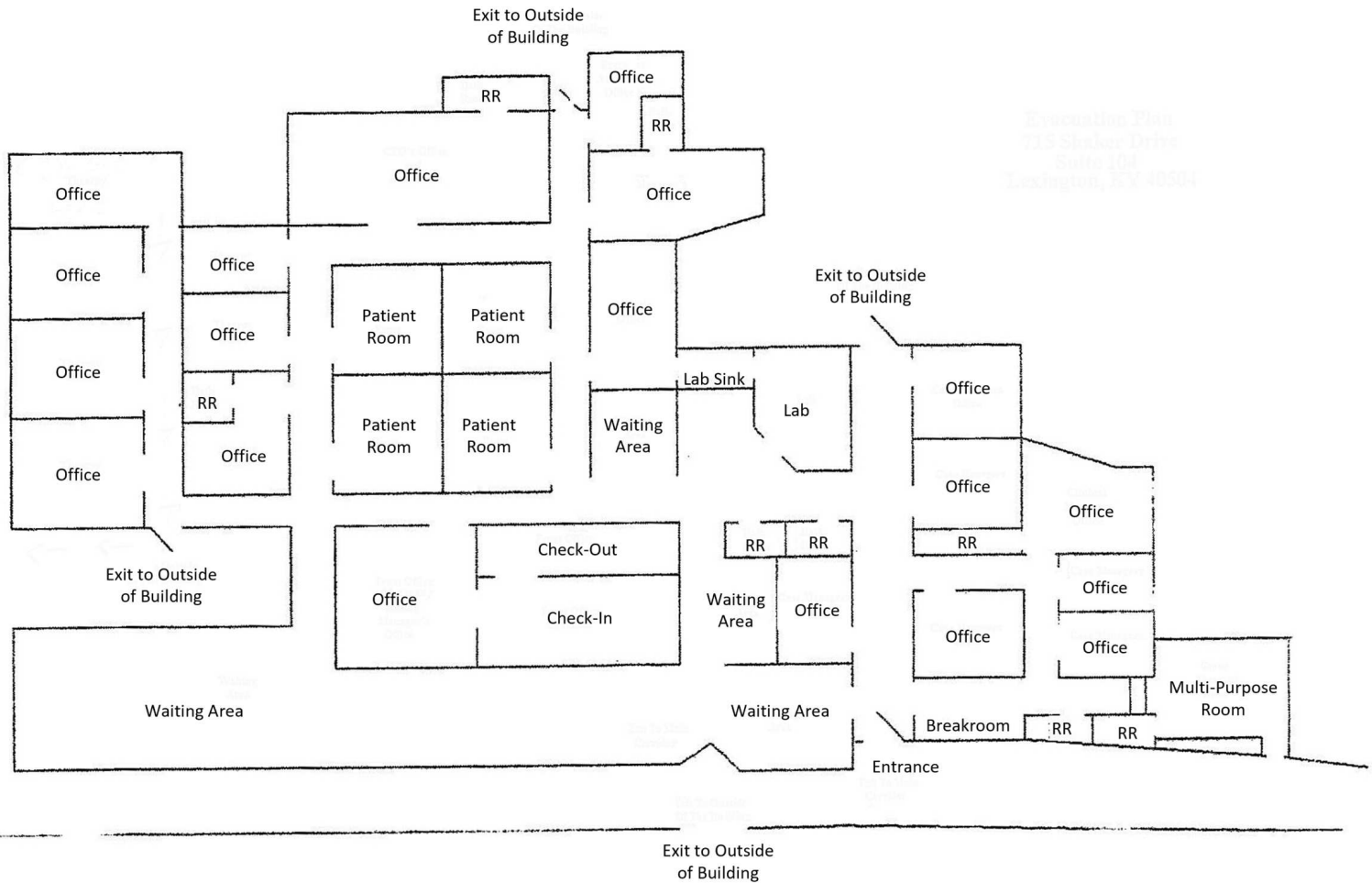
6,613 SF | \$489,000

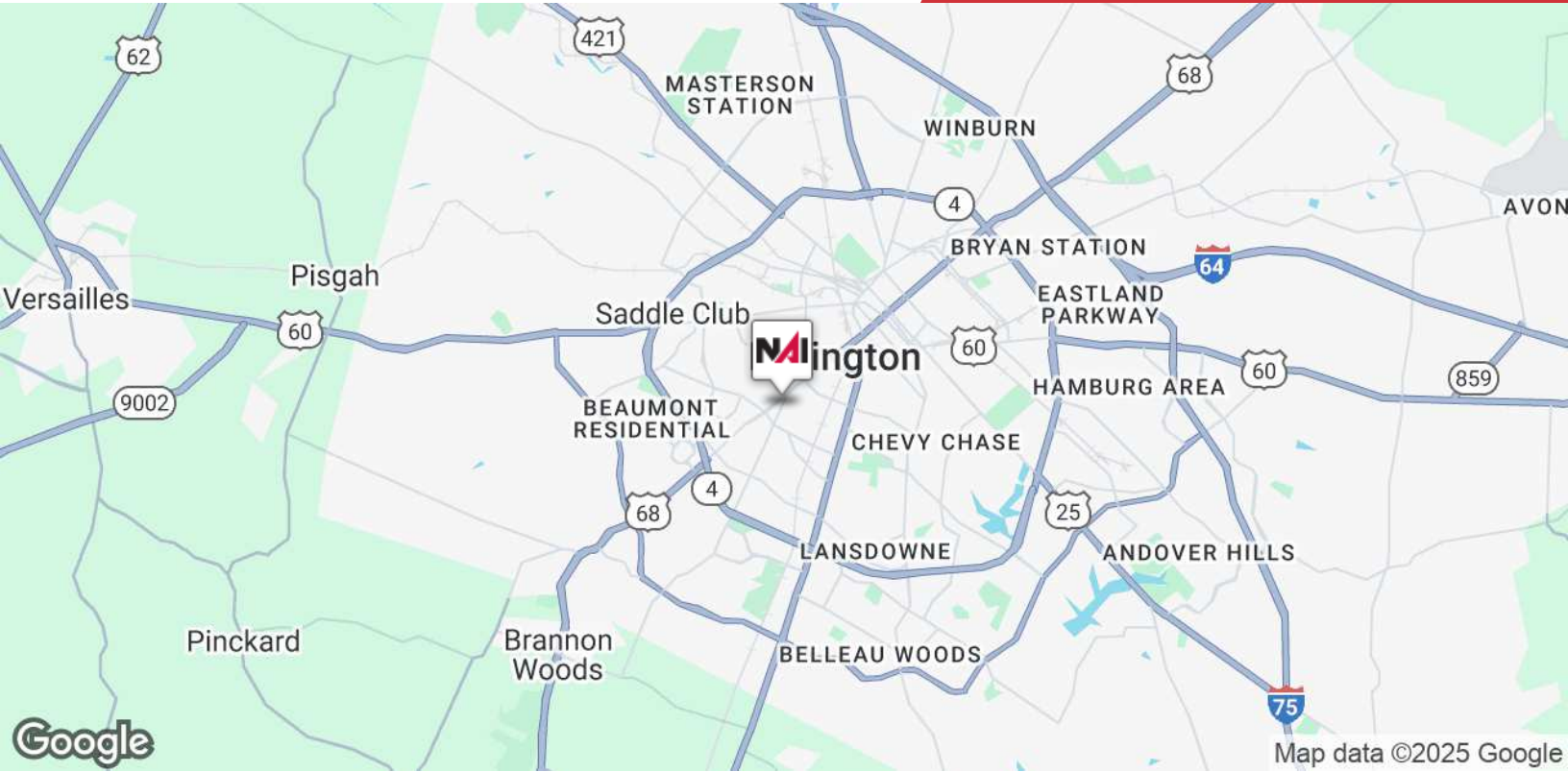
Medical Office Space



NO WARRANTY OR REPRESENTATION, EXPRESS OR IMPLIED, IS MADE AS TO THE ACCURACY OF THE INFORMATION CONTAINED HEREIN, AND THE SAME IS SUBMITTED SUBJECT TO ERRORS, OMISSIONS, CHANGE OF PRICE, RENTAL OR OTHER CONDITIONS, PRIOR SALE, LEASE OR FINANCING, OR WITHDRAWAL WITHOUT NOTICE, AND OF ANY SPECIAL LISTING CONDITIONS IMPOSED BY OUR PRINCIPALS NO WARRANTIES OR REPRESENTATIONS ARE MADE AS TO THE CONDITION OF THE PROPERTY OR ANY HAZARDS CONTAINED THEREIN ARE ANY TO BE IMPLIED.

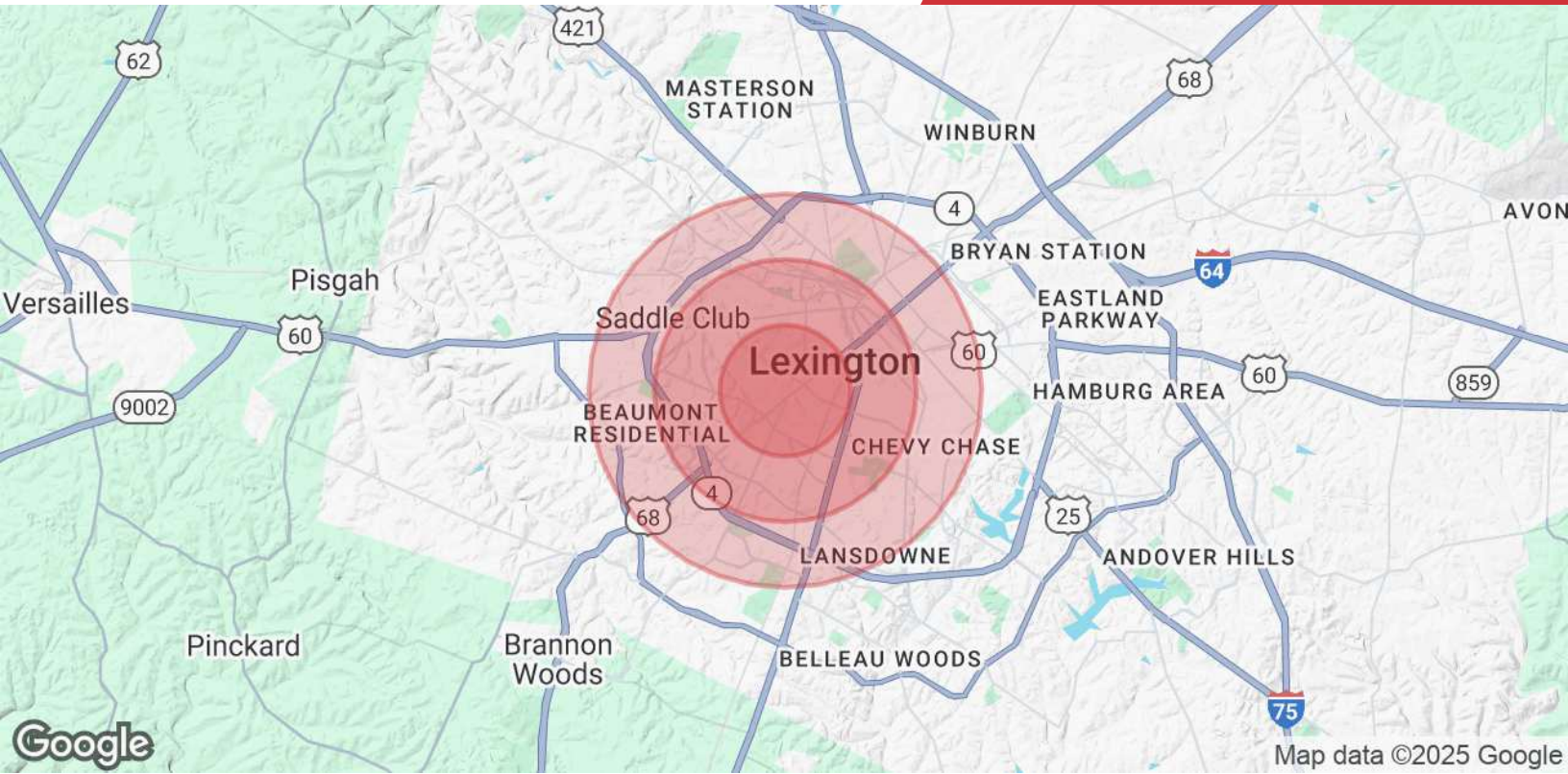
771 Corporate Drive, Suite 500
Lexington, KY 40503
859 224 2000 tel
naiisaac.com





NO WARRANTY OR REPRESENTATION, EXPRESS OR IMPLIED, IS MADE AS TO THE ACCURACY OF THE INFORMATION CONTAINED HEREIN, AND THE SAME IS SUBMITTED SUBJECT TO ERRORS, OMISSIONS, CHANGE OF PRICE, RENTAL OR OTHER CONDITIONS, PRIOR SALE, LEASE OR FINANCING, OR WITHDRAWAL WITHOUT NOTICE, AND OF ANY SPECIAL LISTING CONDITIONS IMPOSED BY OUR PRINCIPALS NO WARRANTIES OR REPRESENTATIONS ARE MADE AS TO THE CONDITION OF THE PROPERTY OR ANY HAZARDS CONTAINED THEREIN ARE ANY TO BE IMPLIED.

771 Corporate Drive, Suite 500
 Lexington, KY 40503
 859 224 2000 tel
naiisaac.com



Population	1 Mile	2 Miles	3 Miles
Total Population	14,225	58,156	104,465
Average Age	31.7	31.5	35.4
Average Age (Male)	32.3	31.2	34.7
Average Age (Female)	31.6	32.0	36.5
Households & Income	1 Mile	2 Miles	3 Miles
Total Households	6,777	23,138	44,000
# of Persons per HH	2.0	2.3	2.2
Average HH Income	\$61,044	\$65,779	\$85,000
Average House Value	\$136,513	\$155,213	\$210,499

* Demographic data derived from 2023 STDB