

FOR LEASE Available 2027

1400 Russell Branch Parkway






Leesburg, VA 20175

Overview

Two pad sites for free-standing restaurant, retail or service use(s) at new development on Russell Branch Parkway. The property is situated between Leesburg Village (Wegmans, LA Fitness, CMX Theater) and Shops at Russell Branch (Lowe's & Aldi), with full access and excellent visibility and parking. 140-room Marriott hotel to include a conference center. Delivery in 2027.

Quick Facts

Affluent	Loudoun County's per capita and household incomes are the highest in the nation
Availability	2027
Size	9,750 - 10,000 square feet (Flexible building sizes; patio / outdoor seating available)
Rental Rate	Negotiable

2024 Demographics	1 mile	3 miles	5 miles
 POPULATION	10,920	69,488	130,342
 HOUSEHOLDS	3,442	22,922	44,277
 AVG. HH INCOME	\$197,319	\$193,955	\$202,950
 DAYTIME POPULATION	11,390	72,774	136,892
 TRAFFIC COUNT	66,000 AADT Harry Byrd Hwy	6,614 AADT* Russell Branch Pkwy	

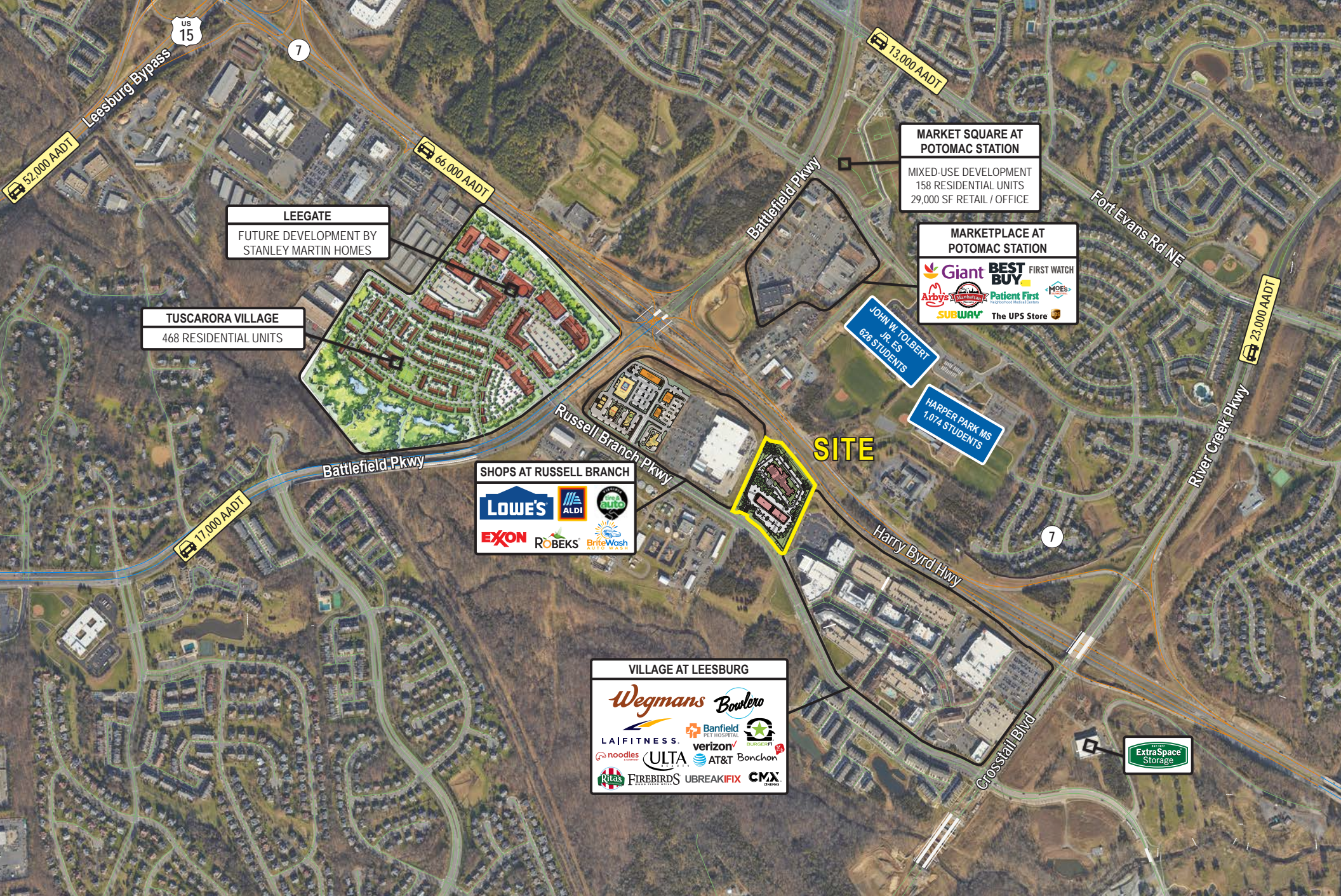
*Sourced from Placer.ai

segall
GROUP

COMMERCIAL REAL ESTATE







Interested? Contact:

Andrew Segall

✉ asegall@segallgroup.com

☎ 410.753.3947

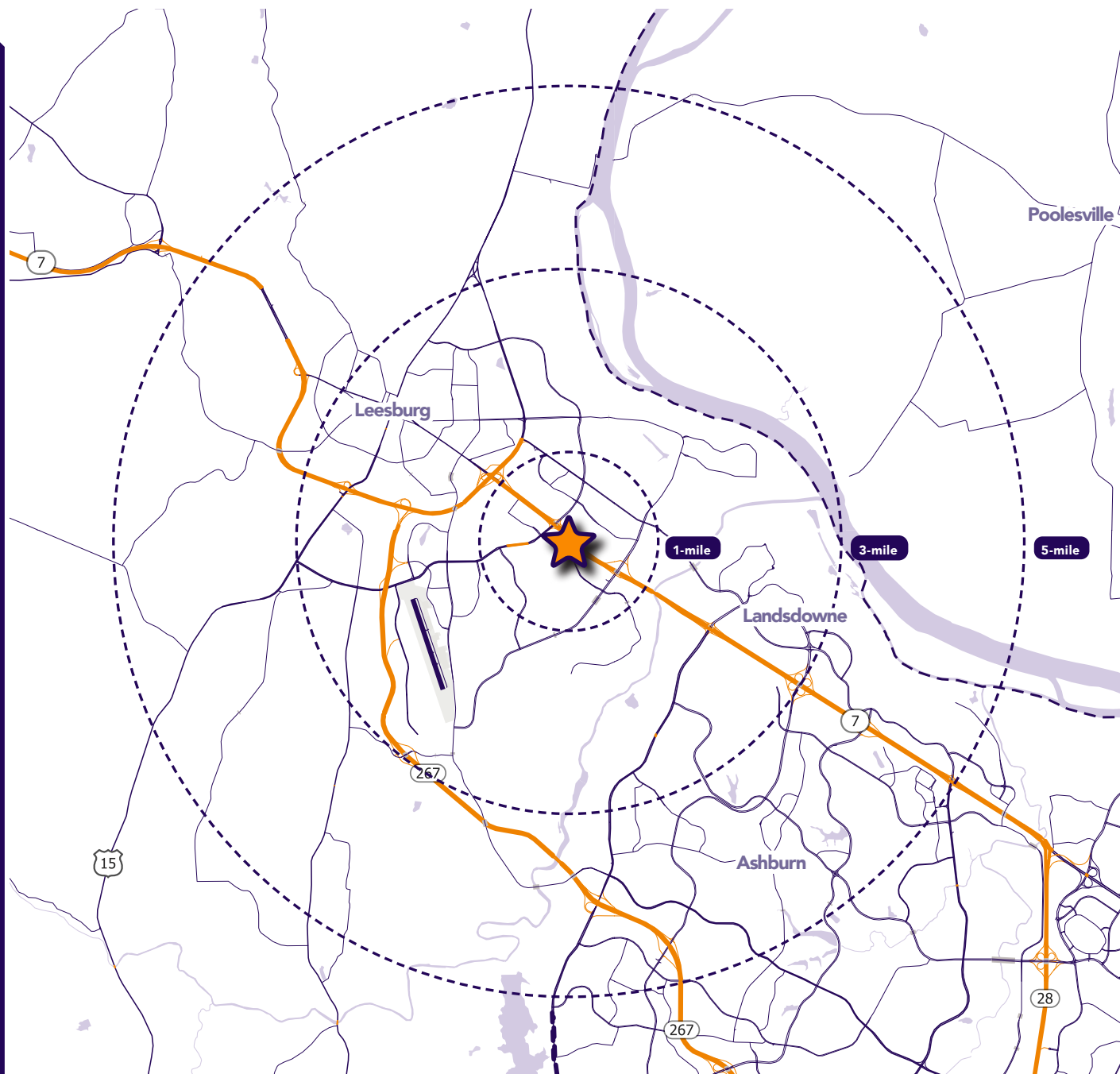
📱 443.960.0361

Rob Meeks

✉ rmeeks@segallgroup.com

☎ 202.741.8394

📱 202.352.2306



Maryland

605 South Eden Street
Suite 200
Baltimore, MD 21231
410.753.3000

DC • Northern VA

8245 Boone Boulevard
Suite 200
Tysons, VA 22182
202.833.3830

Richmond

4701 Cox Road
Suite 100
Glen Allen, VA 23060
804.336.2501

Online

www.segallgroup.com

Member of

REALTY
RESOURCES

RETAIL
READY.

segall
GROUP