

# Tamair Plaza

Retail | 5 suites available | 650 sq. ft. - 14,104 sq. ft.  
13205 - 13255 SW 137th Avenue, Miami, FL 33186



**Raymond Gonzalez**

FL  
786.306.8577

## Building Details

Property Type .....	Retail	Subtype .....	Storefront
Tenancy .....	Multiple	Total Building SQFT .....	32,104
Minimum Divisible SQFT .....	650	Max Contiguous SQFT .....	14,104
Year Built .....	1997	Buildings .....	2
Stories .....	2	Total Parking Spaces .....	230
Elevators .....	Yes	Number Of Elevators .....	2
Cross Street .....	137 AVE	Zoning .....	BU-1A
County .....	MIAMI-DADE		

## Building Description

Building two plant, offices, retail store-front, elevator, large parking space, renovated

RETAIL STRIP FIRST FLOOR FOR A LOT OF EXPOSURE FROM 137 Ave, OFFICE SPACE IN THE SECOND FLOOR WITH THE EXPOSURE FOR MEDICAL, ACCOUNTING OR ANY PROFESSIONAL

LOCATED AT the 137 AVE WITH PASSING MORE THAT 75000 CARS DAILY

# Building Highlights

---

- VERY APPROPRIATE FOR PROFESSIONAL AND MEDICAL OFFICES.
- CENTRALLY LOCATED IN 137 AVE
- LARGE PARKING SPACE.
- EASY ACCESS
- CONVENIENT LEASE TERMS.
- GREAT FOR RETAIL SPACE.
- SPACE HAS DIRECT ACCESS THROUGH STREET

# Suite Details

---

<b>Suite/Unit #</b>	<b>Size</b>	<b>Rate</b>
Available Space 1	650 Sq Ft	undisclosed
Available Space 2	1,000 Sq Ft	undisclosed
Available Suite 3	1,700 Sq Ft	undisclosed
Available Suite 4	1,000 Sq Ft	undisclosed
Available Suite 5	1,500 Sq Ft	undisclosed
Available Suite 6	2,000 Sq Ft	undisclosed
Available Suite 7	1,750 Sq Ft	undisclosed

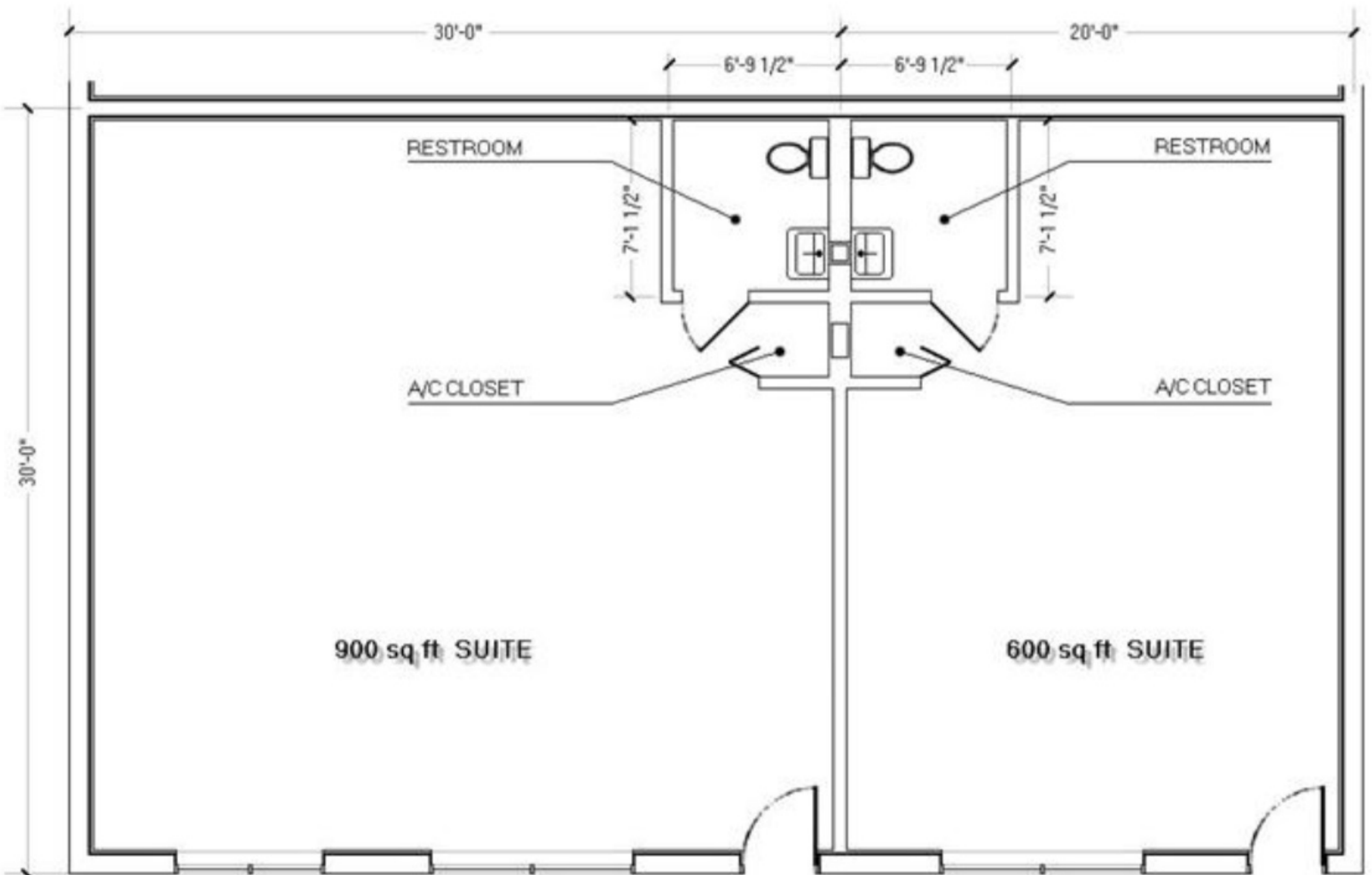


# Space Location (1 Location)

13205 - 13255 SW 137th Avenue









# YOUR NAME HERE

**STOREFRONT**  
**1500 sf**  
**+65 K cars daily**  
**Facing to. 137th Ave**  
**+ 230 space in parking lot**  
**Don't miss the opportunity**  
**to start business here!!!**  
**Ready to rent**  
**Montly specials**  
**Reduced rent**  
**Call now**  
**305-207-8080**





**REALTORS SON BIENVENIDOS EN TAMAIR PLAZA**

WE OFFER A VARIETY OF OPTIONS AND PRICING.

LEASING OFFICE  
AVAILABLE FROM 9:00  
AM TO 5:00 PM  
305-207-8080



LOCATED AT 13205  
SW 137TH AVE.  
MIAMI, FL



**RGPROPERTYGROUP**

**305-207-8080**



**RG Property Group offers retail -store front, office and space facing 137th Ave located closed of Lexus Dealer and Tamair Airport ideal for store front, retail and professional office use. Unit offered start to \$1,500/month + tax and utilities. Plaza offers plenty of parking spaces 230+ spaces. Elevator available for handicap access. Maximum exposure on one of the busiest traffic retail streets of Miami with a total traffic count of 65k cars daily.**

**305-207-8080**

**786-249-6059**









