



# OFFICE/RETAIL SPACE FOR LEASE

133 E. ANAPAMU ST.  
SANTA BARBARA, CA

## PROPERTY OVERVIEW

Downtown retail space located across the street from the County Courthouse and two blocks from State Street. Situated adjacent to the former Victor the Florist. The space has 10' ceilings and an ADA restroom and HVAC unit.

**SIZE:** +/- 1,280 SF

**LEASE RATE:** \$2.50/SF Gross

**TERM:** 3-5 Years

**TENANT EXPENSES:** Utilities

**RESTROOM:** 1 New ADA Restroom

**HVAC:** Yes

**PARKING:** Street Parking

**ZONING:** C-2

**AVAILABLE DATE:** February 1, 2025

Christi Vior  
cvior@lee-associates.com  
D 805.895.8765  
CalDRE #803953



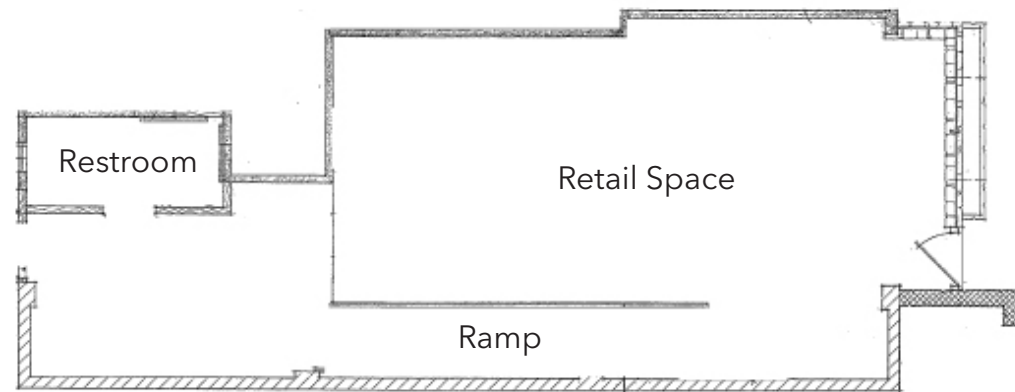
Jim Turner  
jim@jtrealestategroup.com  
D 805.724.0557  
CalDRE #00970829



## INTERIOR PHOTOS



## FLOOR PLAN



E. ANAPAMU ST.



## LOCATION DOWNTOWN SANTA BARBARA

