

606 WEST ROOSEVELT ROAD - Chicago, IL



4,016
Square feet available



31'
Roosevelt Road frontage



21.4K
Vehicles per day on Roosevelt Road



317K
Employees within a two-mile radius



\$114K
Average HH Income in a two mile radius



50
Parking spaces

Prime South Loop Retail: NWC of Roosevelt & Jefferson



PROPERTY DESCRIPTION

- 23,671 sf building;
- Located in major regional South Loop retail district;
- Blocks from major highways and trains;
- Parking for tenants and customers;
- Recently updated common areas;
- Two story passenger elevator.

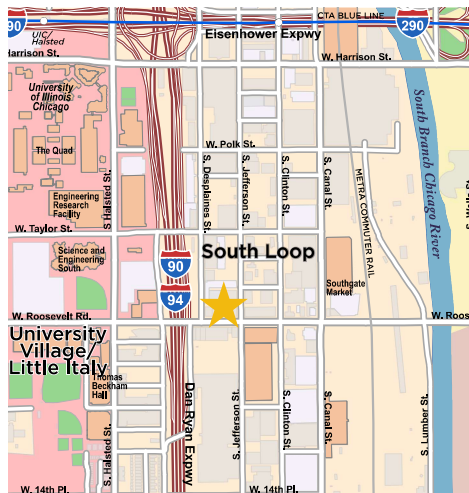
AVAILABLE SPACES

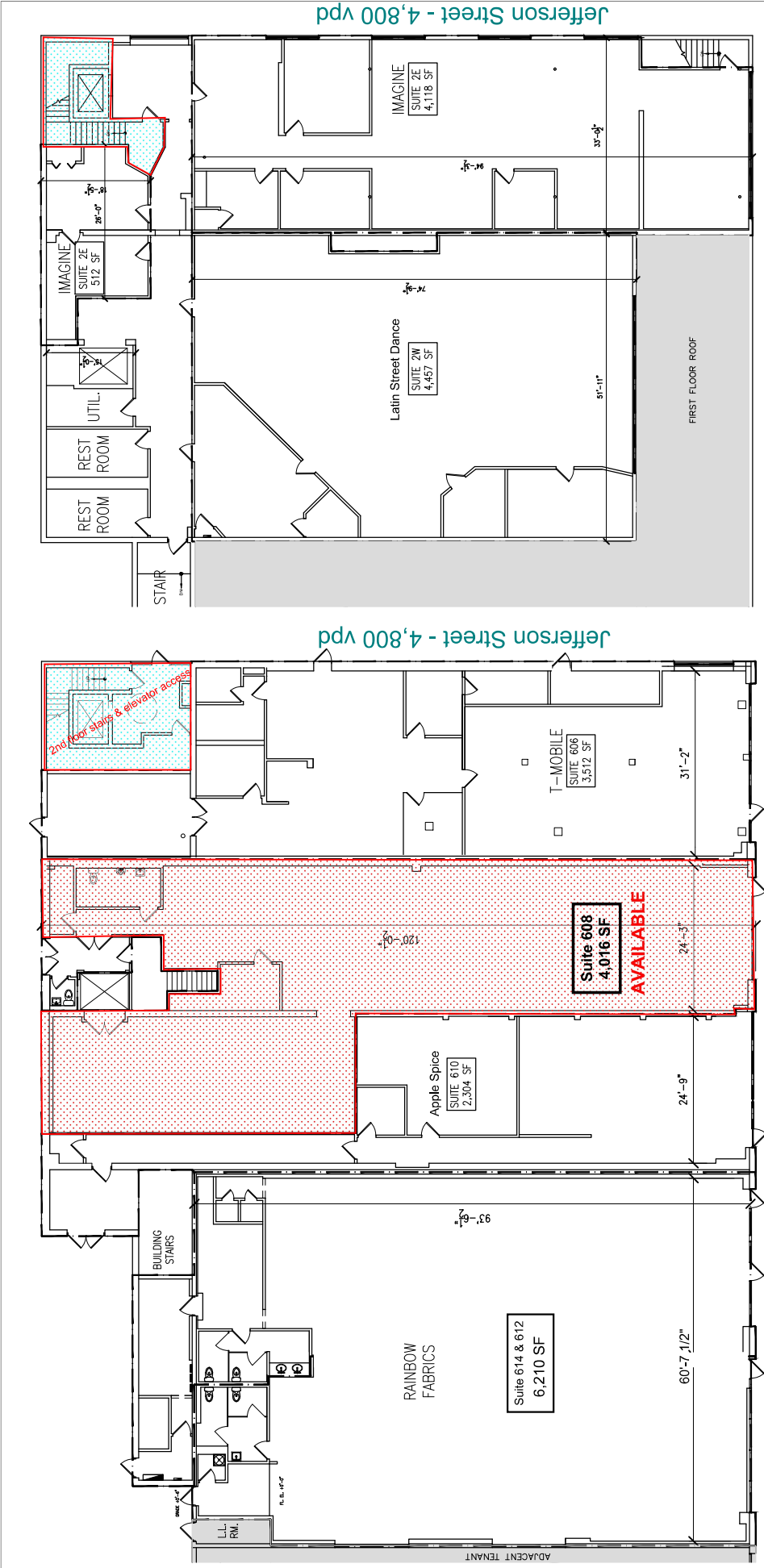
- First Floor: 4,016 sf

TRAFFIC COUNTS

- 21,400 vehicles per day on Roosevelt
- 227,000 vehicles per day on I-90/I-94
- 4,250 vehicles per day on Jefferson

AREA RETAIL TENANTS



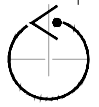


1 FIRST FLOOR
GLA SCALE: 1/16" = 1'-0"

Roosevelt Road - 41,300 vpd

2 SECOND FLOOR
GLA SCALE: 1/16" = 1'-0"

Roosevelt Road - 41,300 vpd



chadha + associates
architecture + interiors + design
200 WEST MONROE STREET
SUITE 2070 CHICAGO ILLINOIS 60606
www.nwraarchitects.com

606-614 W. ROOSEVELT
CHICAGO, IL 60607



600 W. VAN BUREN
SUITE 1000
CHICAGO, IL 60607

GLA

606 WEST ROOSEVELT ROAD

