



PROFESSIONAL OFFICE SPACE FOR LEASE
5819 Sheep Drive, Carson City
NV 89521

FEATURES

- 6 - 9 Offices, 2 Restrooms, Reception area, Open Work Station
- Abundant Parking, Front and Rear of Building
- Central Location off HWY 50 East & Deer Run Rd.
- Zoning GI - General Industrial

Erika Bruun-Andersen

Lic# S.183560

(310) 980.7787

EBAndersen@cbselectre.com

www.eba.cbselectre.com

Terry Yeager

Lic# S0003779 / MGR PM.0162628DES

(775) 721.2883

TerryYeager@Carsoncommercial.com



COLDWELL BANKER
COMMERCIAL

SELECT
REAL ESTATE



REAR OF BUILDING



FRONT OF BUILDING



AVAILABLE

- 2, 372 +/- SF
- \$2,372 Per Month (MG)
- Available August 1st, 2026

Erika Bruun-Andersen

Lic# S.183560

(310) 980.7787

EBAndersen@cbselectre.com

www.eba.cbselectre.com

Terry Yeager

Lic# S0003779 / MGR PM.0162628DES

(775) 721.2883

TerryYeager@Carsoncommercial.com



**COLDWELL BANKER
COMMERCIAL**

**SELECT
REAL ESTATE**

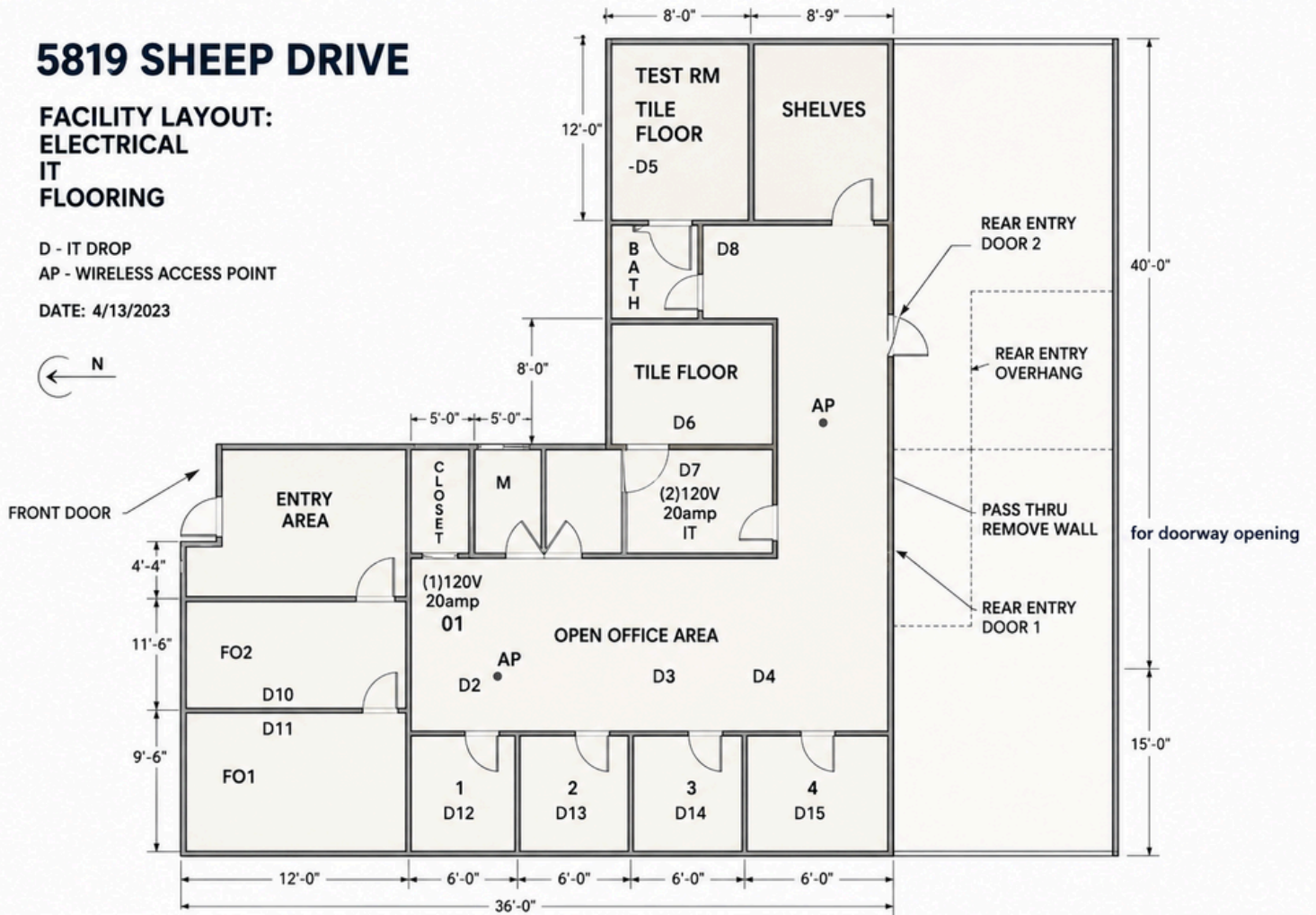


FLOOR PLAN

5819 SHEEP DRIVE

FACILITY LAYOUT: ELECTRICAL IT FLOORING

D - IT DROP
AP - WIRELESS ACCESS POINT
DATE: 4/13/2023



LEGEND:
D - IT DROP

NOTE:
ALL DIMENSIONS ARE

Erika Bruun-Andersen

Lic# S.183560

(310) 980.7787

EBAndersen@cbselectre.com

www.eba.cbselectre.com

Terry Yeager

Lic# S0003779 / MGR PM.0162628DES

(775) 721.2883

TerryYeager@Carsoncommercial.com



COLDWELL BANKER COMMERCIAL

SELECT
REAL ESTATE

