

- RF ENERGY EFFICIENT ROOFING
CAP SHEET WITH REFLECTIVE GRANULES
- MR ARCHITECTURAL METAL ROOFING
STANDING SEAM METAL ROOFING
- PC PRIMARY STUCCO COLOR
WHITE TRUFFLE - SHERAN WALLS 8091
- SC SECONDARY STUCCO COLOR
POLISHED HANGOVER - SHERAN WALLS 2838
- AC ACCENT, EAVES / METAL RAILS
TOLE RED - SHERAN WALLS 0006
- FC LAPPED FIBER CEMENT BAORD
PAINTED POLISHED HANGOVER
- LD VINYL WINDOWS, BRONZE
GLAZING LHM-E NO TINT USG-40 37UGS0.25
- COLOR + MATERIAL SCHEDULE
SCALE: NTS SCHD-COLOR
- STUCCO TEXTURE: FINE SAND

METAL PAINTING NOTE:
METAL FLASHING, VENTS, PIPES, ELECTRICAL
PANELS, AND OTHER MISCELLANEOUS EXPOSED
METAL MUST BE PAINTED TO MATCH THE COLOR
OF ROOF OF WALL BEHIND THE ELEMENT. REFER TO
COLOR SCHEDULE FOR DECORATIVE METAL ITEMS
SUCH AS RAILINGS AND CORRUGATED SING.

KEYNOTES

- E 1 EXTERIOR INSULATION and STUCCO FINISH
SYSTEM
- E 2 SPRAY FOAM ROOFING
- E 4 7/8" CORRUGATED METAL
- E 6 METAL BALCONY RAILING
- E 8 METAL PRE-FRABRICATED STAIRS WITH METAL
RISERS
- E 10 FINISH GRADE, See CIVIL PLANS
- E 11 DOOR, See SCHEDULE
- E 12 WINDOW, See SCHEDULE
- E 15 STUCCO FASCIA OVER WOOD FRAMING
- E 17 ELECTRICAL METER PACK
- E 19 GROUND MOUNTED AC UNIT on CONC. SLAB
- E 27 EXTERIOR LIGHT, See ELECTRICAL

**ATHENA
STUDIO, LLC**
2801 E Camelback
Phoenix, AZ 85016
Ph: 602-345-0290



Structural Designer:
Nathan G. O'Connell
2605 North 25th
Phoenix, AZ 85035
(602) 370-5095

Mechanical:
NP Mechanical
Electrical:
Engineering
Phoenix, AZ 85035
(602) 279-8092

**APACHE JUNCTION
DUPLEX APARTMENTS**
727 S. DELAWARE AVE, APACHE JUNCTION, ARIZONA

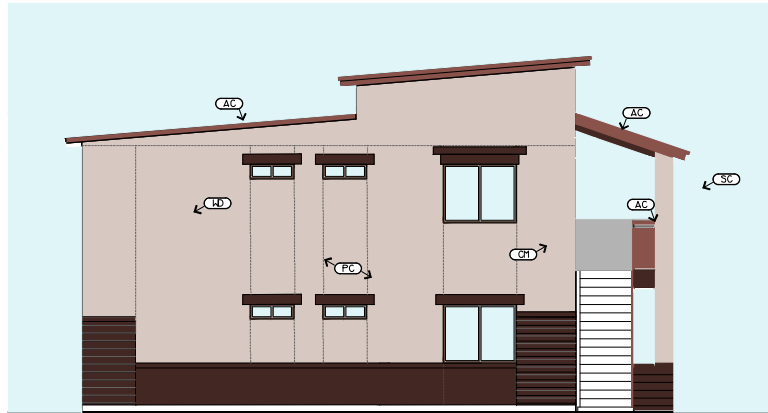
Issue Date:

Revisions:

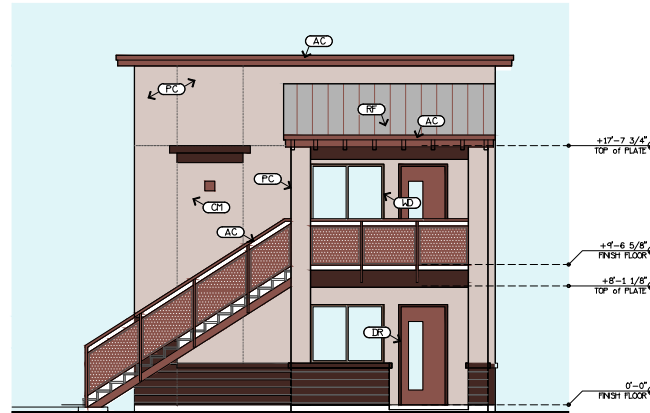
PROJECT NUMBER
2204.1
DRAWN FOR
YI
DATE PLOTTED
02/20/23
CAD FILE NAME
2204.1-F.P

BUILDING
ELEVATIONS

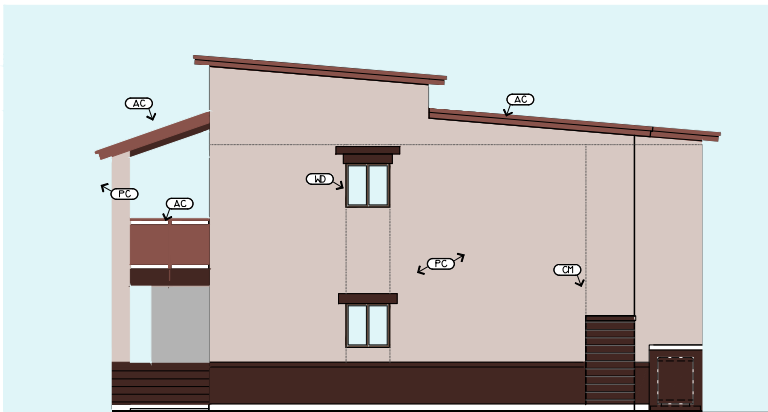
A2.4



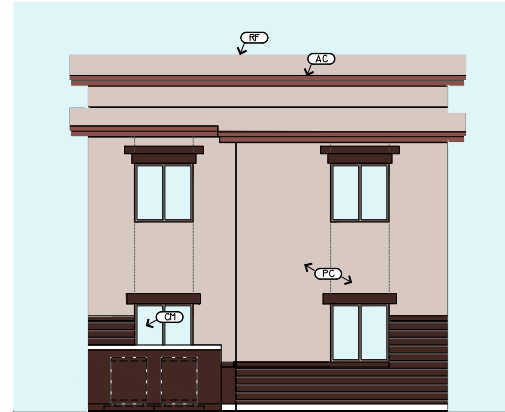
LEFT SIDE



FRONT



RIGHT SIDE



REAR

BUILDING ELEVATIONS

SCALE: 1/4" = 1' - 0"

Copyright © 2023 Athena Studio, LLC

TWO BEDROOM