

MURDOCK PLAZA RETAIL SHOPPING CENTER

1700 TAMIAMI TR., PORT CHARLOTTE, FL 33948



FOR LEASE: \$15 PSF + \$5.50 PSF CAM

AGGRESSIVE RENTAL RATES

Murdock Plaza is a highly visible, 83,165 SF neighborhood shopping center located directly on Tamiami Trail with over 700± feet of frontage and 50,000 cars daily. This well maintained retail center is situated within the busiest corridor in Charlotte County.

PROPERTY FEATURES

- Unit E-1: 1,600 ± SF
- Building Size: 83,165± SF
- Land Size: 7.88± Acres
- Year Built: 1991
- Zoning: CG - Commercial General (Charlotte County)
- Utilities: water & sewer
- Two large pylon signs
- Parking: 5.36/1,000 SF (446 spaces)
- Excellent exposure
- Quality mix of national and local tenants
- Traffic Count: 50,000 AADT

JIM BOBACK, CCIM
Broker/Owner

JOIN EXISTING TENANTS

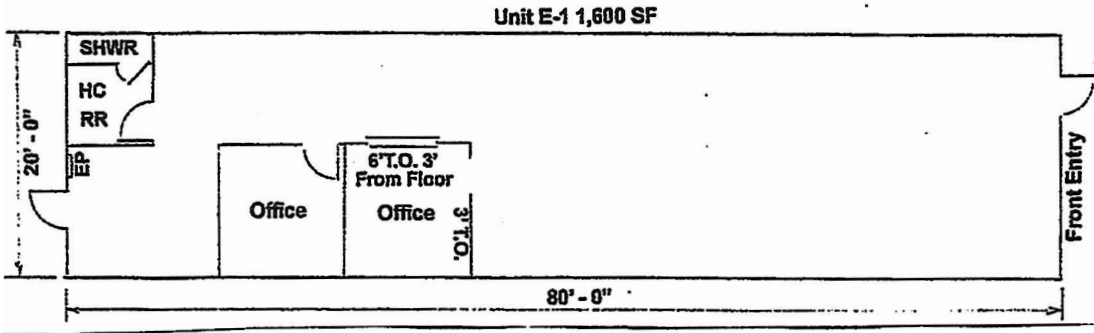
These are just a few of the national and local tenants at Murdock Plaza.

C 239-565-2616 • O 239-466-7770
JB@BobackCommercialGroup.com
www.BobackCommercialGroup.com

MURDOCK PLAZA RETAIL SHOPPING CENTER

1700 TAMIAMI TR., PORT CHARLOTTE, FL 33948

AVAILABLE UNIT: E-1



DEMOGRAPHICS

	1 Mile	3 Miles	5 Miles
Population	4,733	41,362	94,102
# Households	2,493	17,799	39,368
Median HH Income	\$37,172	\$47,212	\$53,035
Median Age	63.5	51.9	50.3

JIM BOBACK, CCIM
Broker/Owner

C 239-565-2616 • O 239-466-7770
JB@BobackCommercialGroup.com
www.BobackCommercialGroup.com