



4105 Holiday St NW Canton, Ohio 44718

LEASE RATE	\$16.00/SF + utilities
------------	------------------------

MINIMUM SQ FT	2,250/SF
---------------	----------

MAXIMUM SQ FT	18,520/SF
---------------	-----------

YEAR BUILT	2000
------------	------

ACRES	2.64
-------	------

ZONING	B3
--------	----

PARKING SPACES	149
----------------	-----

Property Details

- Outstanding brick office building in prime Belden Village location has undergone significant improvements including new roof top units, new common area hallways with beautiful tile and fresh paint, and new staircases which create a multi-tenant environment.
- The exterior has been updated with new landscaping, parking lot freshly sealed & striped, new building signage & new monument sign at road.
- Half of the first floor has been completely remodeled and is under a 10-year lease.
- Several suites are still available for your custom floor plan and design. Appropriate for medical or office. Owner offering generous TI package for long term leases.
- Fantastic location, less than a mile from the I-77 exit and in the heart of the regions shopping and dining.

Dan Spring, SIOR

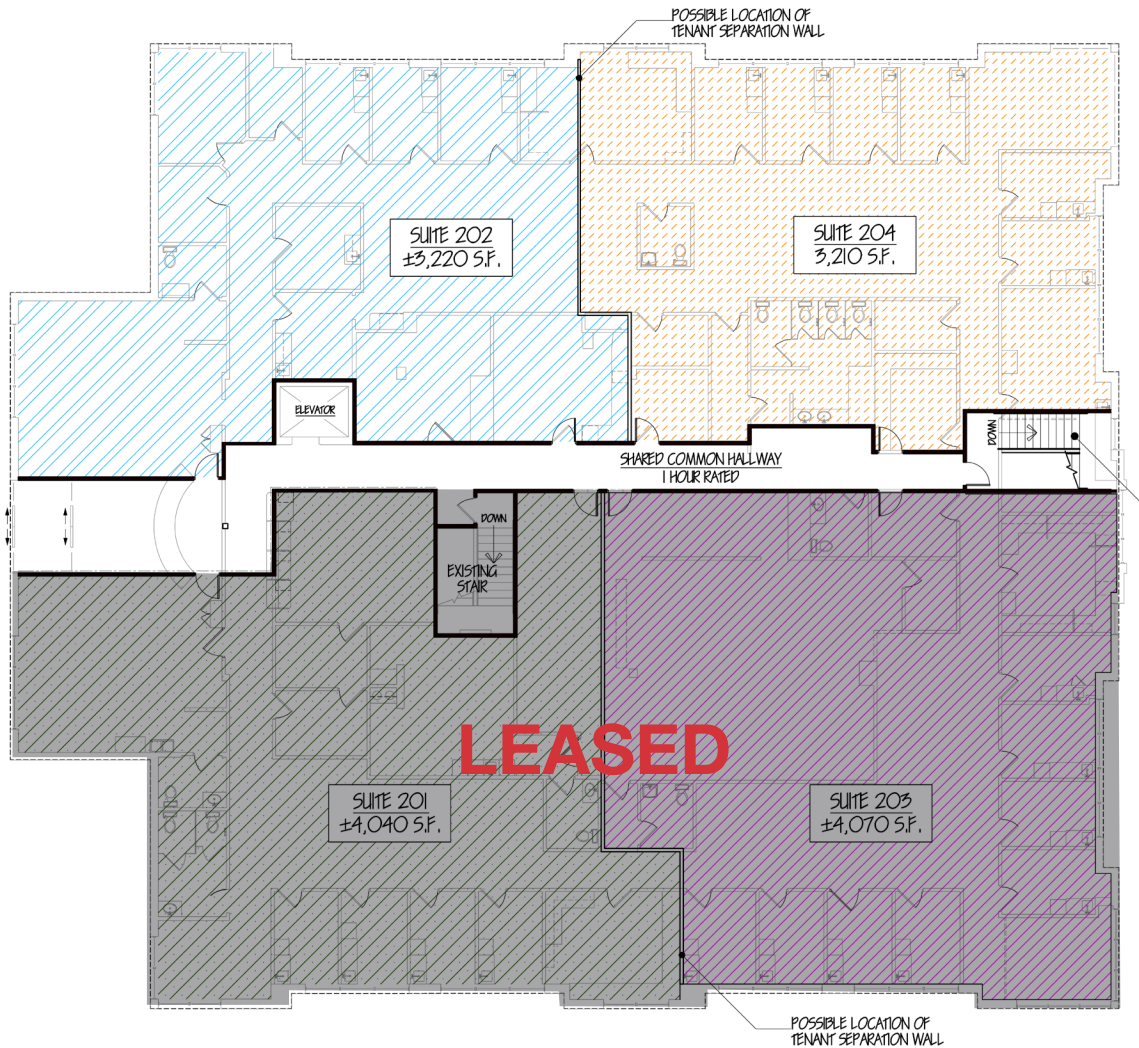
P 330 497 6249 • dan@naispring.com

Kelly Sober, CCIM

P 330 497 9837 • kelly@naispring.com

MAIN FLOOR

For LEASE
4105 Holiday St NW
Canton, Ohio 44718



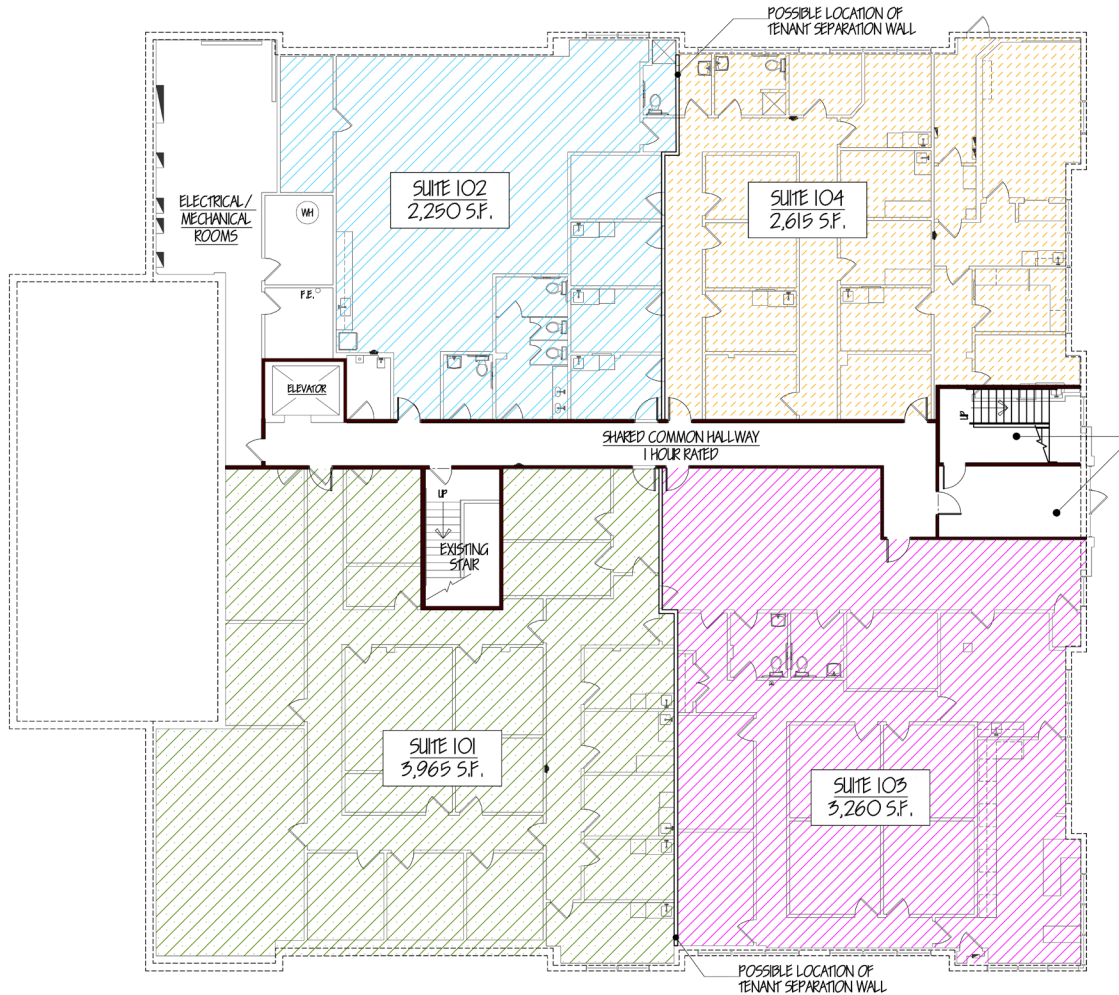
** THESE ARE JUST EXAMPLES OF POSSIBLE FLOOR PLANS. OWNER WILL CONSIDER DEMISING SPACE TO SUITE TENANT'S NEEDS.
*DIMENSIONS ARE APPROXIMATE. THIS INFORMATION IS FROM RELIABLE SOURCES BUT IS NOT GUARANTEED AND IS SUBJECT TO CHANGE



8234 Pittsburg Ave NW
North Canton, OH 44720
+1 330 966 8800
naispring.com

LOWER LEVEL

For LEASE
4105 Holiday St NW
Canton, Ohio 44718



**** THESE ARE JUST EXAMPLES OF POSSIBLE FLOOR PLANS. OWNER WILL CONSIDER DEMISING SPACE TO SUITE TENANT'S NEEDS.
*DIMENSIONS ARE APPROXIMATE. THIS INFORMATION IS FROM RELIABLE SOURCES BUT IS NOT GUARANTEED AND IS SUBJECT TO CHANGE**



8234 Pittsburg Ave NW
North Canton, OH 44720
+1 330 966 8800
naispring.com

