

FOR SALE

Approx. 6,400 S.F. Church Property 1150 Meadowcrest Rd. - LaGrange Park, IL

Sale Price \$895,000



Potential Redevelopment Site

- R-1 Single Family Residential Zoning
- Site size 37,400 sq. ft. (0.86 acres)
- Real estate tax exempt - church use

- PIN #15-28-311-001
- PIN #15-28-311-002
- PIN #15-28-311-003
- PIN #15-28-311-004
- PIN #15-28-311-005

- 1950s masonry construction
- ± 120 sanctuary seating
- Hot water boiler

DEMOGRAPHICS

	<u>1 MILE</u>	<u>3 MILES</u>	<u>5 MILES</u>
2023 Population	14,200	116,221	356,101
2023 Households	5,705	44,389	129,678
Avg. HH Income	\$134,629	\$119,977	\$111,599

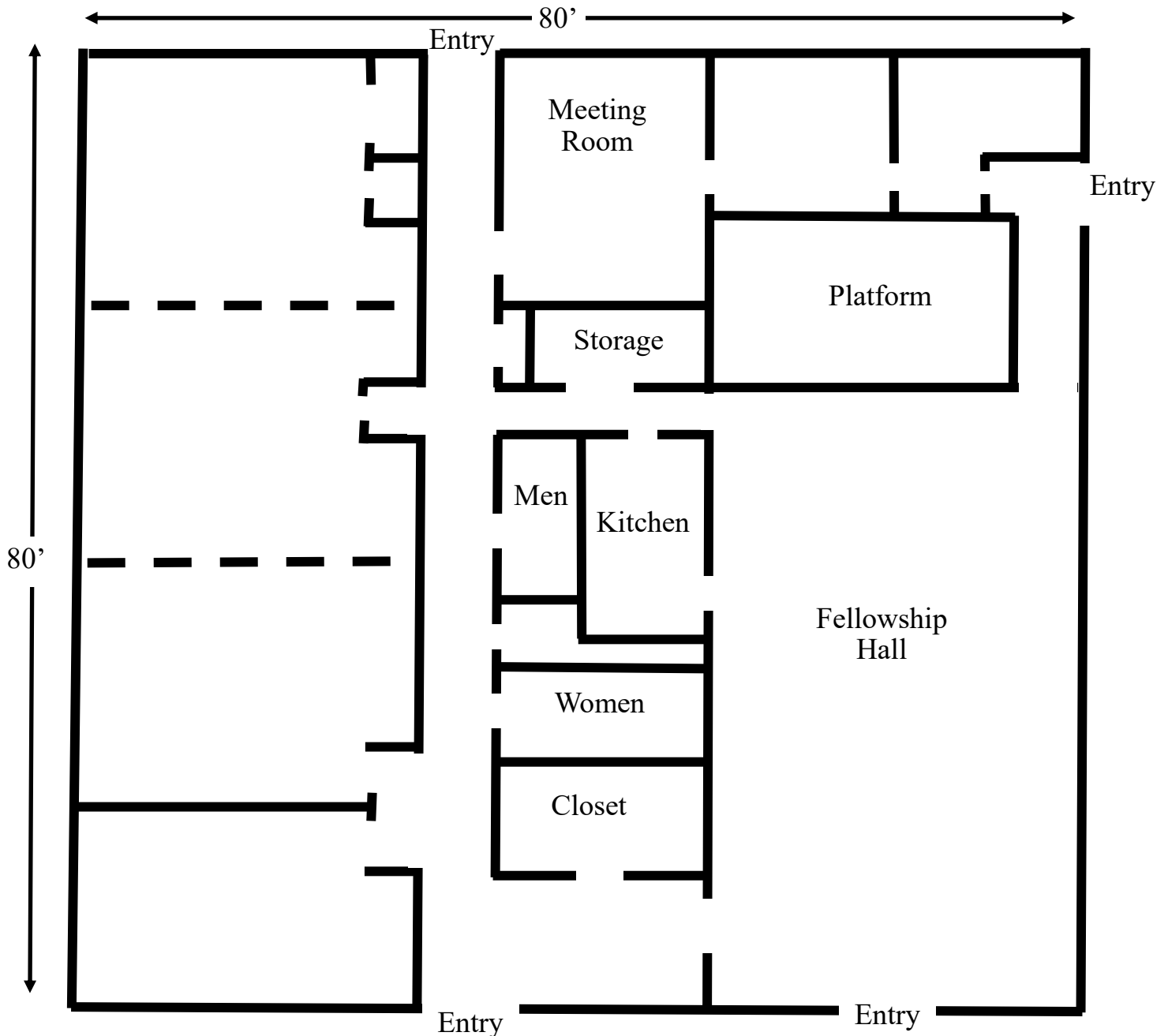


Exclusively Offered by:
Daniel Chopp
 (708) 387-2640
 dan@choppcommercial.com

All information herein is from sources deemed reliable but not guaranteed accurate.
 Subject to errors, omissions, and to change of price and terms, prior sale or lease, all without notice.

1150 Meadowcrest Rd. - LaGrange Park, IL Floor Plan

NOTE: THIS DRAWING NOT TO SCALE.



Exclusively Offered by:
Daniel Chopp
(708) 387-2640
dan@choppcommercial.com

All information herein is from sources deemed reliable but not guaranteed accurate.
Subject to errors, omissions, and to change of price and terms, prior sale or lease, all without notice.

1150 Meadowcrest Rd. - LaGrange Park, IL Interior Photos



Exclusively Offered by:
Daniel Chopp
(708) 387-2640
dan@choppcommercial.com

All information herein is from sources deemed reliable but not guaranteed accurate.
Subject to errors, omissions, and to change of price and terms, prior sale or lease, all without notice.