

VENTURE COMMERCE CENTER

42245 REMINGTON AVENUE, UNIT B-11, TEMECULA, CA 92590

FOR LEASE

±5,311 SF INDUSTRIAL CONDOMINIUM



FOR MORE INFORMATION, PLEASE CONTACT:

CAREY PASTOR | Senior Vice President

(951) 297-7434 | careyp@cbcsocalgroup.com

CalDRE License # 01403298



**COLDWELL BANKER
COMMERCIAL**
SC

VENTURE COMMERCE CENTER

42245 REMINGTON AVENUE, UNIT B-11, TEMECULA, CA 92590

FOR LEASE

±5,311 SF INDUSTRIAL CONDOMINIUM

PROPERTY HIGHLIGHTS

- ±5,311 SF industrial condominium
- ±4,147 SF of highly improved warehouse space and ±1,164 SF open
- Highly improved warehouse provides high efficiency overhead lighting, sealed floors, insulated ceiling, 100% HVAC service, work shop with built-in cabinetry and roll up doors
- The office loft provides a large, open bull pen with built-in storage wall, entertainment center and a private office
- 1 - 10'w x 12' h grade level roll-up door
- Offered For Lease at \$7,458.00 base rent + \$774.00 OA Fees per month



VENTURE COMMERCE CENTER

42245 REMINGTON AVENUE, UNIT B-11, TEMECULA, CA 92590

FOR LEASE

±5,311 SF INDUSTRIAL CONDOMINIUM

PROPERTY PHOTOS



Warehouse



Mezzanine Office



Warehouse

VENTURE COMMERCE CENTER

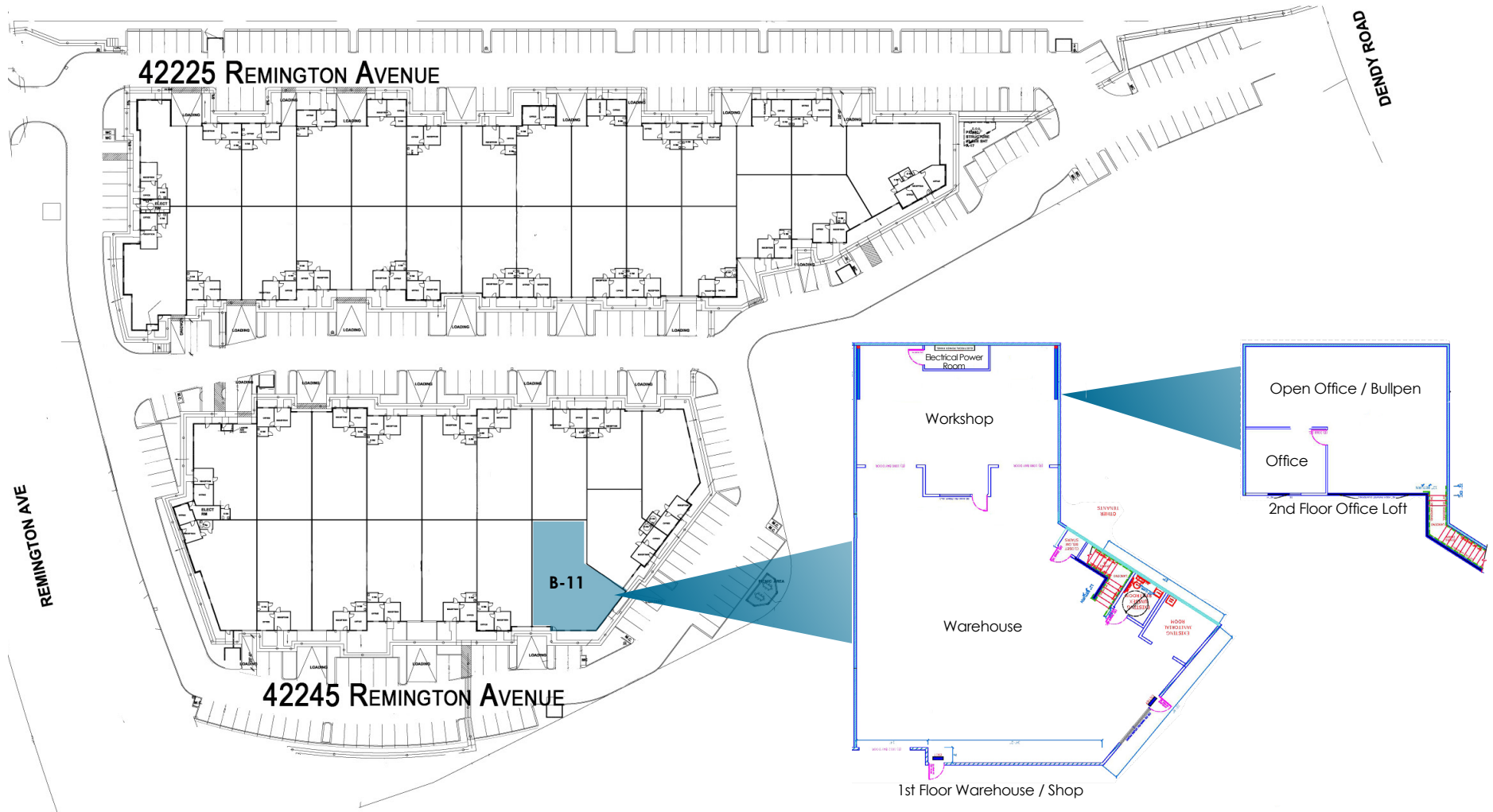
42245 REMINGTON AVENUE, UNIT B-11, TEMECULA, CA 92590

FOR LEASE

±5,311 SF INDUSTRIAL CONDOMINIUM

SITE PLAN AND FLOOR PLAN

FLOOR PLAN

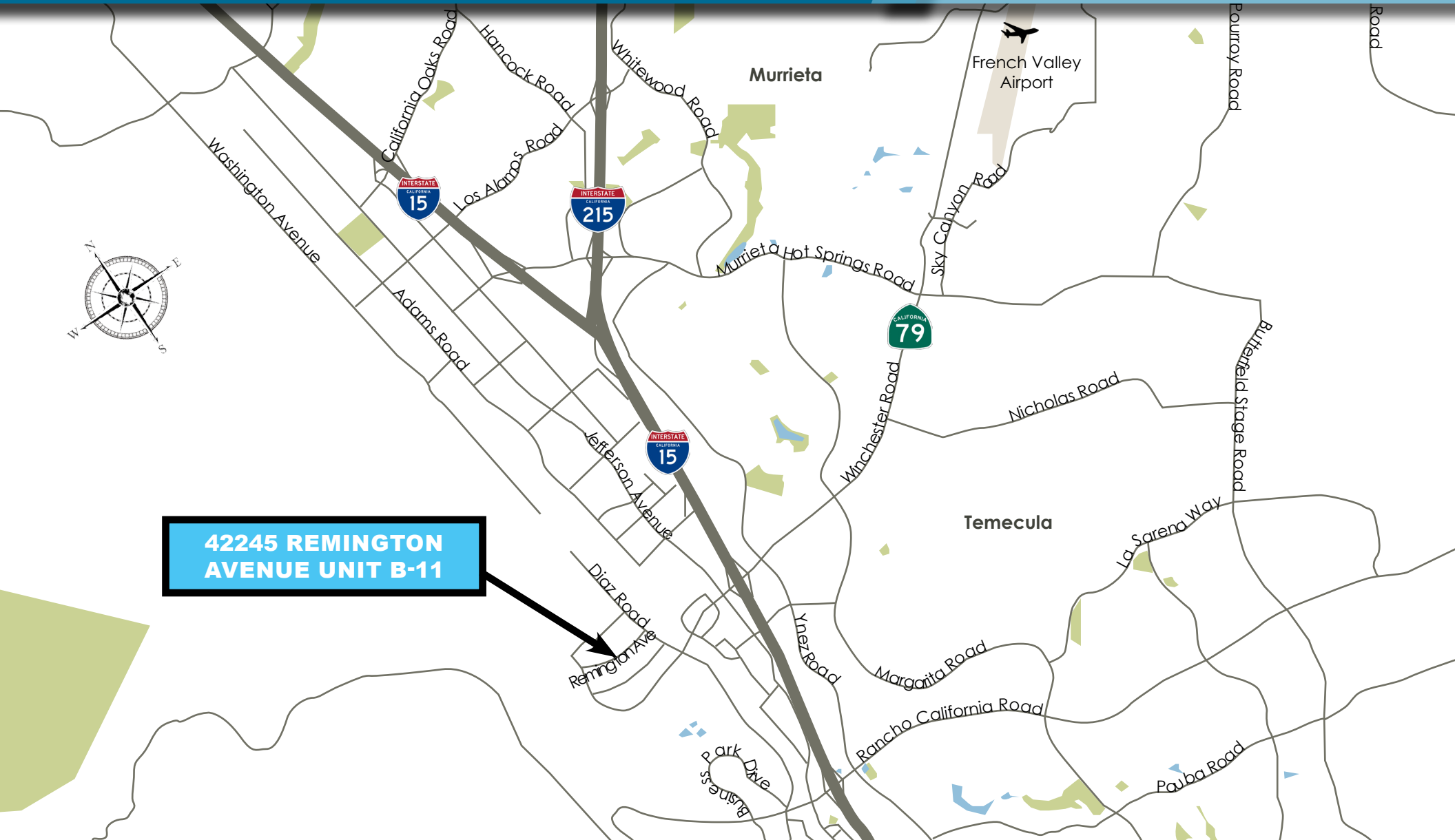


VENTURE COMMERCE CENTER

42245 REMINGTON AVENUE, UNIT B-11, TEMECULA, CA 92590

FOR LEASE

±5,311 SF INDUSTRIAL CONDOMINIUM



**42245 REMINGTON
AVENUE UNIT B-11**

VENTURE COMMERCE CENTER

42245 REMINGTON AVENUE, UNIT B-11, TEMECULA, CA 92590

FOR LEASE

±5,311 SF INDUSTRIAL CONDOMINIUM



FOR MORE INFORMATION, PLEASE CONTACT:

CAREY PASTOR

Senior Vice President

951.297.7434

careyp@cbsocalgroup.com

CalDRE # 01403298

27368 Via Industria | Suite 102
Temecula | California | 92590
t 951.200.7683 | f 951.239.3147
cbsocalgroup.com



**COLDWELL BANKER
COMMERCIAL**
SC