

It's Chelsea. Terrific.

150 West 30th Street (between 6th and 7th Avenues)

Suite 405

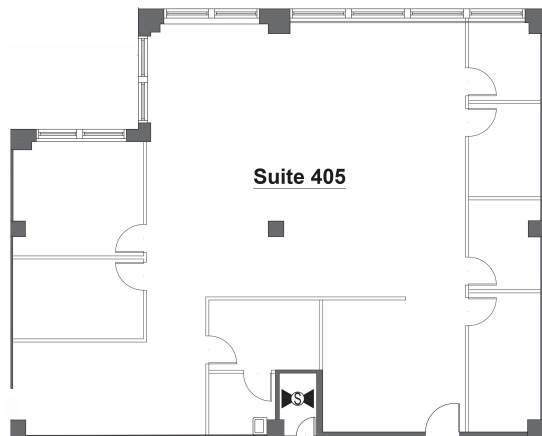
BERNSTEIN

REAL ESTATE



Facts

- 3,700 rentable sq ft
- SE corner unit move-in ready
- Large space built with 5 offices and a conference room
- Open area furnished with desks and reception
- Wet pantry, concrete floors, open ceiling, ample storage



About the Property

Gorgeous Lobby/ Updated Elevators
24 hour/7day Lobby Attendant
Full Staff
6 elevators (4 passenger, 2 freight)
Great Tenant Roster
Just off Seventh Avenue, steps from
Penn Station, close to Herald Square
Subways and Path



David Berger

call to show
Phone: 646-454-2906
Email: dberger@bernsteinre.com

Terms

- Possession: Immediate
- Rent: Negotiable
- Landlord will modify/upgrade
- Electric submetered
- Tenant controlled air cooled a/c

All information is furnished from sources deemed reliable, but no representation is made as to the accuracy thereof, and same is submitted subject to errors, omissions, change of price, rental, or other conditions, prior sale, lease or financing and/or withdrawal without notice. This listing does not constitute an employment. All areas and dimensions are approximate.