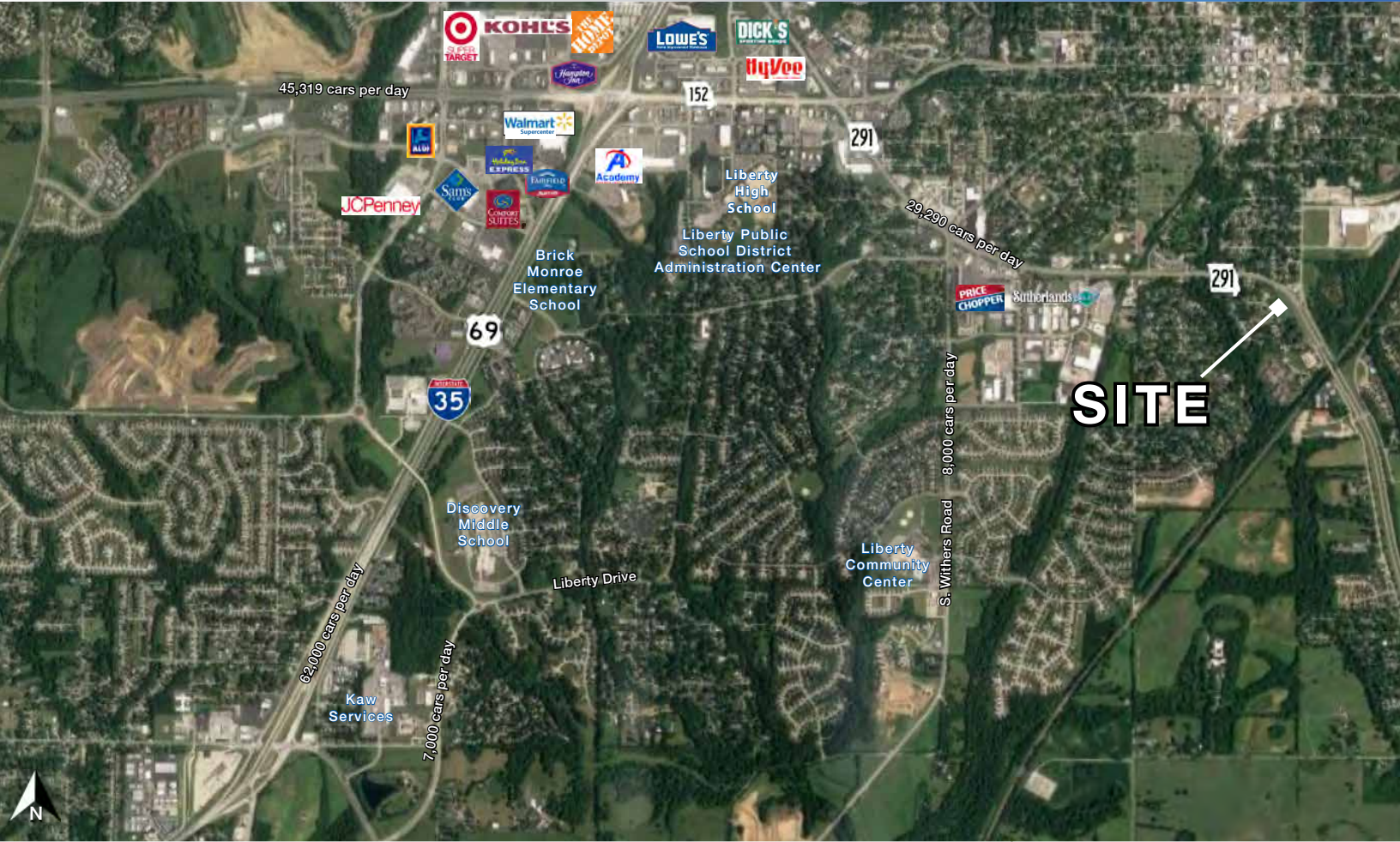




# Vacant Unimproved Commercial Land

## 1100 Missouri Court, Liberty, Missouri



# SALE PRICE: \$975,000 | 4.4 +/- ACRES

### DEMOGRAPHICS

	1 mile	3 miles	5 miles
Estimated Population	9,571	35,618	63,582
Avg. Household Income	\$90,534	\$98,886	\$103,997

- Great development property on the south edge of Liberty, MO
- Approximately 4.4 acres per Clay County GIS
- Can be divided
- Great traffic counts of over 42,000 cars per day on 291 Highway

 [CLICK HERE TO VIEW MORE LISTING INFORMATION](#)

For More Information Contact: *Exclusive Agent*  
**BOB JAEKEL** | 816.412.7365 | [bjael@blockandco.com](mailto:bjael@blockandco.com)



## PARCEL MAP





# Vacant Unimproved Commercial Land

1100 Missouri Court, Liberty, Missouri

## PHOTOS

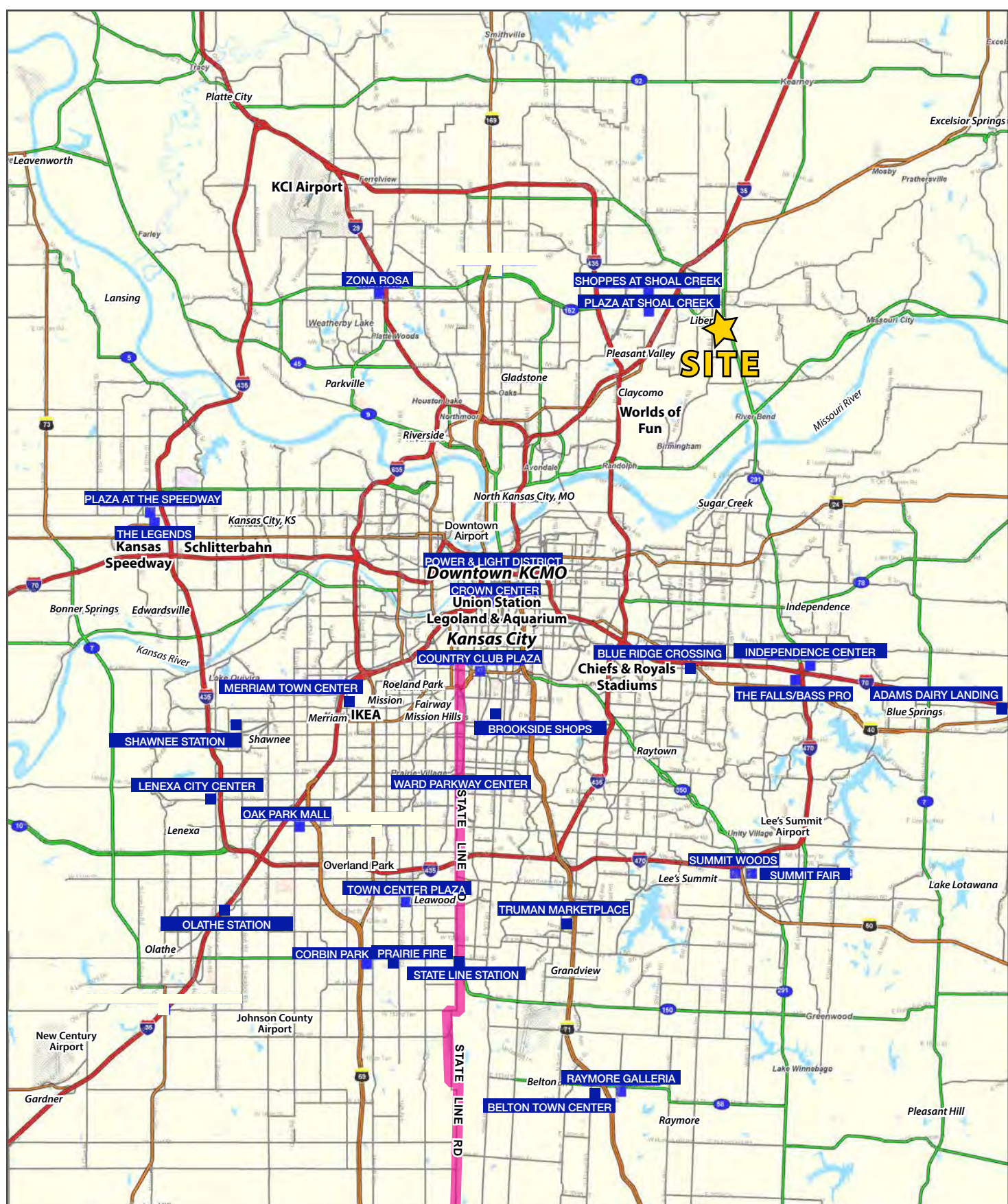
---





# Vacant Unimproved Commercial Land

1100 Missouri Court, Liberty, Missouri

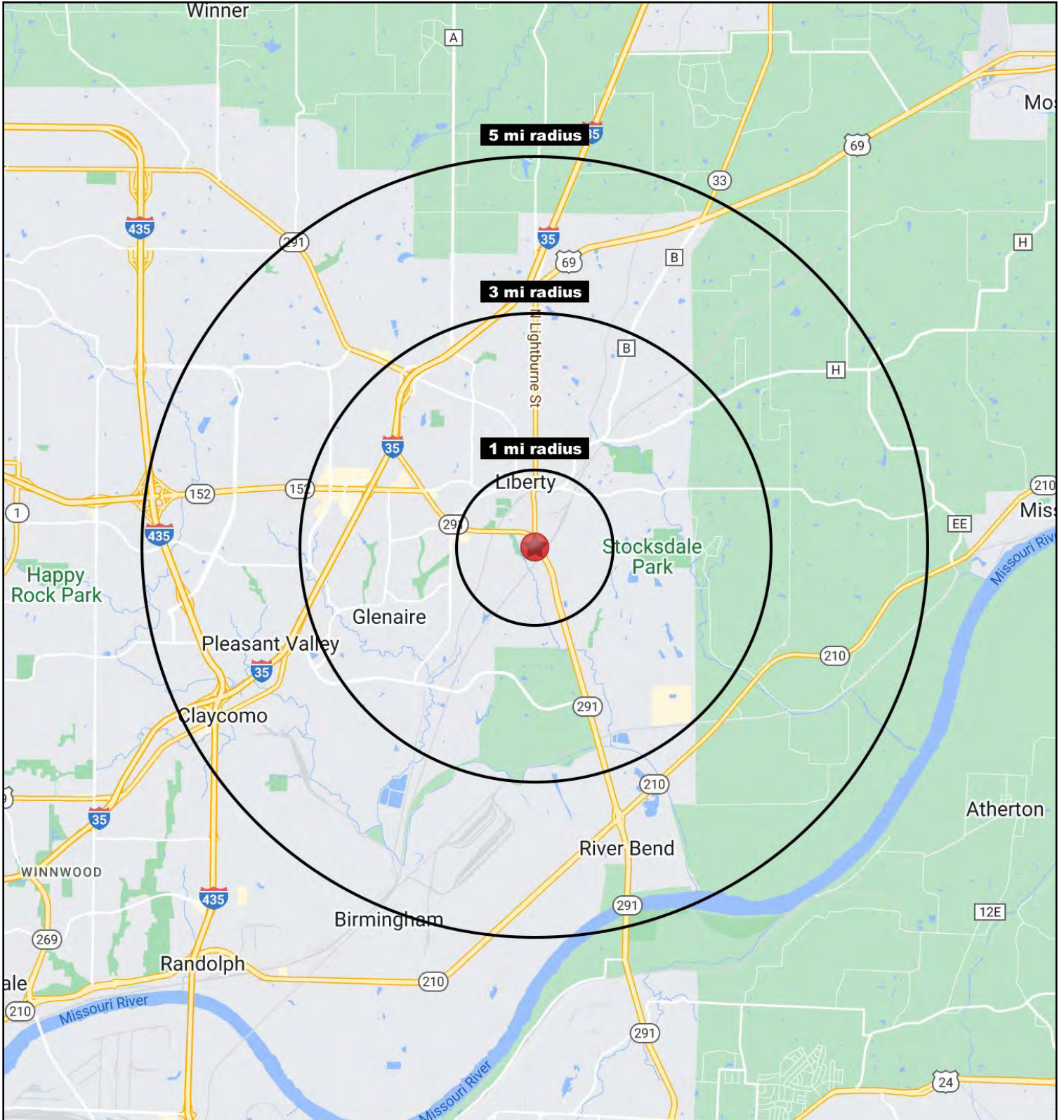


All information furnished regarding property for sale or lease is from sources deemed reliable, but no warranty or representation is made as to the accuracy thereof and the same is subject to errors, omissions, changes of prices, rental or other conditions, prior sale or lease or withdrawal without notice.



# Vacant Unimproved Commercial Land

1100 Missouri Court, Liberty, Missouri





# Vacant Unimproved Commercial Land

## 1100 Missouri Court, Liberty, Missouri

1100 Missouri Ct Liberty, MO 64068	1 mi radius	3 mi radius	5 mi radius
<b>Population</b>			
2021 Estimated Population	9,571	35,618	63,582
2026 Projected Population	10,256	38,162	68,165
2020 Census Population	9,393	34,263	62,841
2010 Census Population	9,193	31,426	53,929
Projected Annual Growth 2021 to 2026	1.4%	1.4%	1.4%
Historical Annual Growth 2010 to 2021	0.4%	1.2%	1.6%
2021 Median Age	33.4	37.2	35.7
<b>Households</b>			
2021 Estimated Households	3,475	13,339	23,309
2026 Projected Households	3,432	13,168	23,004
2020 Census Households	3,457	12,758	22,974
2010 Census Households	3,338	11,512	19,569
Projected Annual Growth 2021 to 2026	-0.2%	-0.3%	-0.3%
Historical Annual Growth 2010 to 2021	0.4%	1.4%	1.7%
<b>Race and Ethnicity</b>			
2021 Estimated White	79.6%	81.0%	80.9%
2021 Estimated Black or African American	6.5%	5.8%	6.0%
2021 Estimated Asian or Pacific Islander	3.3%	3.2%	3.0%
2021 Estimated American Indian or Native Alaskan	0.4%	0.4%	0.4%
2021 Estimated Other Races	10.1%	9.5%	9.6%
2021 Estimated Hispanic	6.5%	5.9%	6.3%
<b>Income</b>			
2021 Estimated Average Household Income	\$90,534	\$98,886	\$103,997
2021 Estimated Median Household Income	\$78,962	\$82,838	\$92,034
2021 Estimated Per Capita Income	\$33,195	\$37,292	\$38,285
<b>Education (Age 25+)</b>			
2021 Estimated Elementary (Grade Level 0 to 8)	2.2%	1.8%	1.8%
2021 Estimated Some High School (Grade Level 9 to 11)	4.3%	3.3%	3.0%
2021 Estimated High School Graduate	29.0%	27.0%	26.0%
2021 Estimated Some College	24.7%	22.4%	21.2%
2021 Estimated Associates Degree Only	6.3%	6.8%	7.2%
2021 Estimated Bachelors Degree Only	23.7%	24.8%	26.5%
2021 Estimated Graduate Degree	9.8%	13.9%	14.2%
<b>Business</b>			
2021 Estimated Total Businesses	370	1,293	1,720
2021 Estimated Total Employees	4,117	15,754	20,234
2021 Estimated Employee Population per Business	11.1	12.2	11.8
2021 Estimated Residential Population per Business	25.9	27.5	37.0

©2022. Sites USA. Chandler, Arizona. 480-491-1112 Demographic Source: Applied Geographic Solutions 11/2021. TIGER Geographv - RS1

