

For Sale | Industrial

3702 Horseblock Rd, Medford NY



Construction Completed 2023

Play Video Tour ►

Building Size: ± 13,400 sf
Lot Size: 1 acre ±
Offices: ± 35%
Ceiling Height: 27' clear
Drive-in: 1
Dock: 1
Heat: Gas
Power: ±1,200 amps



1st Fl Office Lobby: 330 sf
1st Fl Warehouse: 9,810 sf
2nd Fl Office: 3,260 sf
Total Building Area: 13,400 sf (10,140 sf footprint)

Asking Sale Price: \$3,995,000.00
Approx. Taxes: TBD

- Zoned L1 Town of Brookhaven
- Legal overnight parking of vehicles allowed
- Tax incentives available
- Section 775 - Block 4 - Lot 8
- Sewers
- Sprinklers
- Fully Air Conditioned

METRO

REALTY SERVICES LLC

201 Moreland Road, Ste 4, Hauppauge, NY 11788

(631) 770-0700 ~ info@metrorealtyservices.com

www.metrorealtyservices.com

Exclusive Agent:

Jeremy D. Hackett

Licensed Real Estate Broker

Managing Partner

Direct: (631) 391-6359

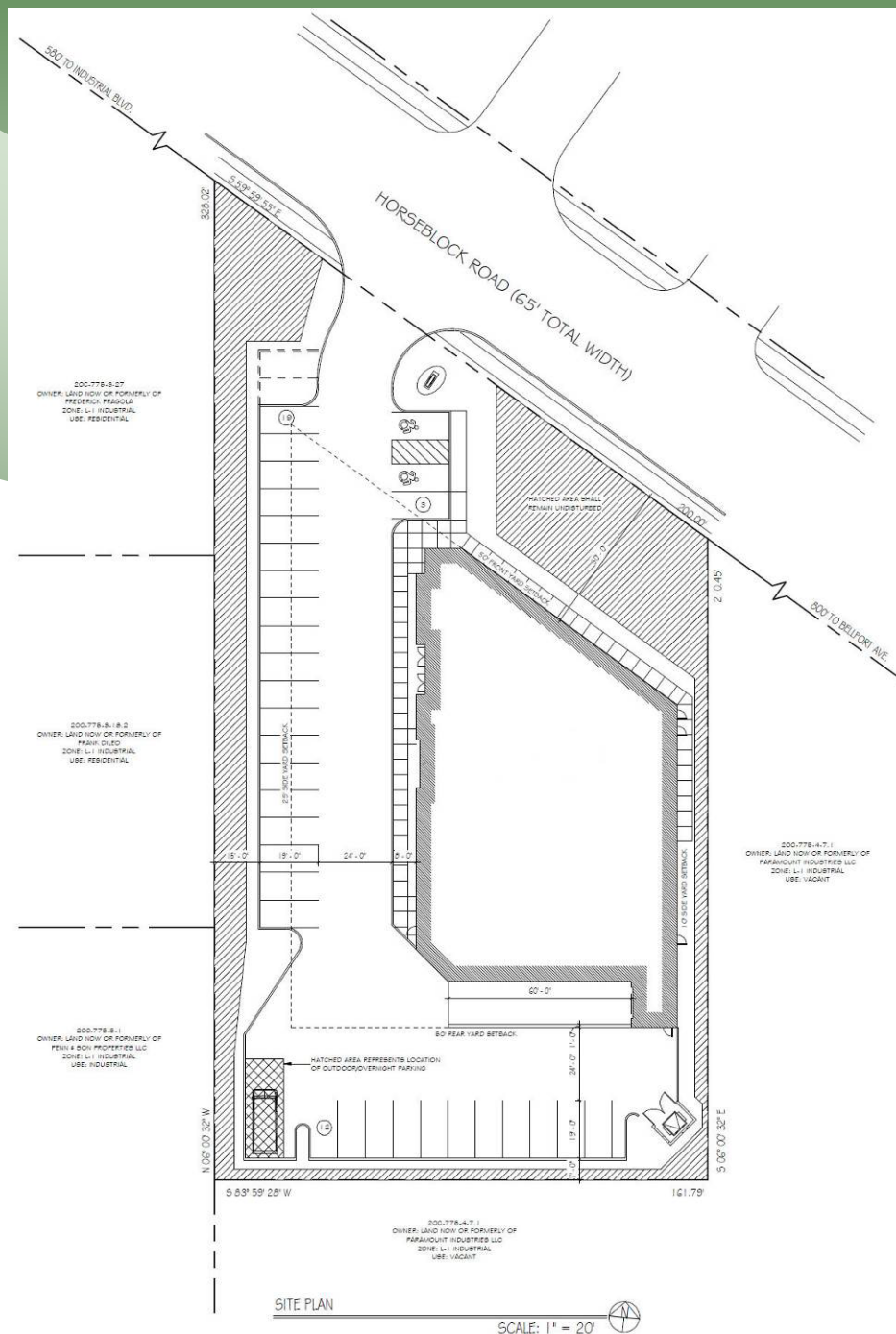
jeremy@metrorealtyservices.com

All information submitted is subject to errors, omissions, change of price or rental, change of other terms and conditions, prior sale, lease, financing or withdrawal without notice. All areas and dimensions are approximate. This advertisement does not suggest that the broker has a listing on this property or properties or that any property is currently available.

For Sale | Industrial

3702 Horseblock Rd, Medford NY

***** Plan shown below may differ slightly from final plan**



201 Moreland Road, Ste 4, Hauppauge, NY 11788
(631) 770-0700 ~ info@metrorealtyservices.com
www.metrorealtyservices.com

Exclusive Agent:

Jeremy D. Hackett
Licensed Real Estate Broker
Managing Partner

Direct: (631) 391-6359

jeremy@metrorealtyservices.com

All information submitted is subject to errors, omissions, change of price or rental, change of other terms and conditions, prior sale, lease, financing or withdrawal without notice. All areas and dimensions are approximate. This advertisement does not suggest that the broker has a listing on this property or properties or that any property is currently available.

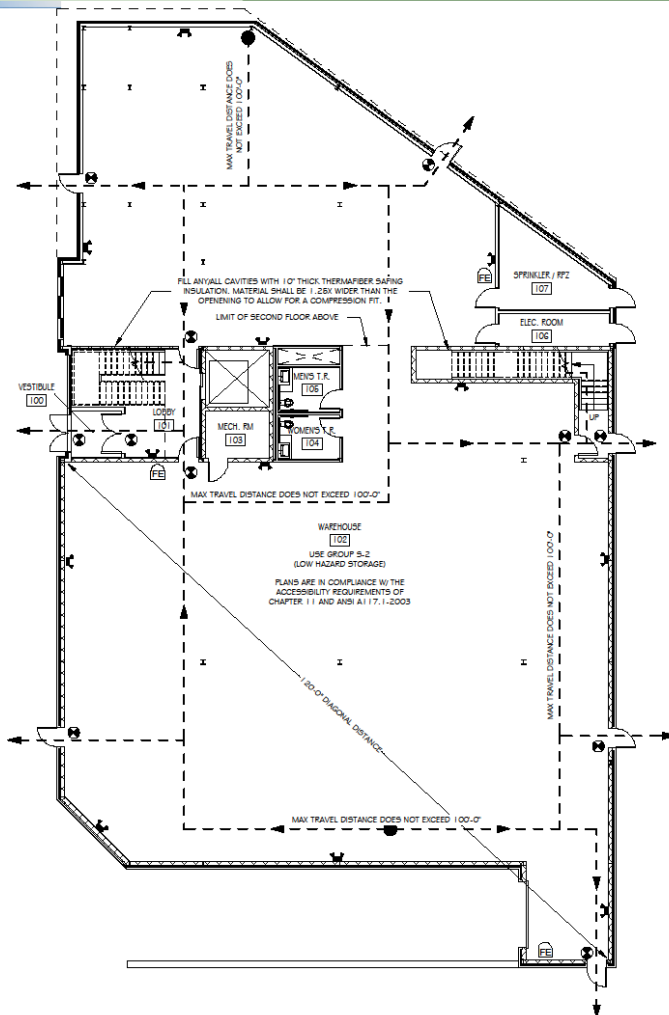
For Sale | Industrial

3702 Horseblock Rd, Medford NY

***** Plan shown below may differ slightly from final plan**

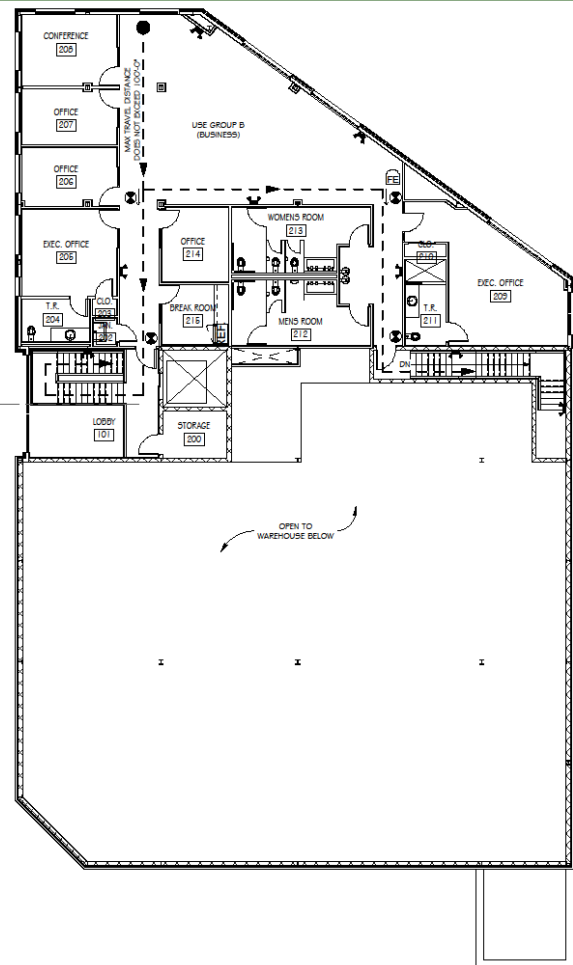
1st Floor

2nd Floor



FIRST FLOOR EGRESS PLAN

SCALE: 3/32" = 1'



SECOND FLOOR EGRESS PLAN

SCALE: 3/32" = 1'



METRO
REALTY SERVICES LLC

201 Moreland Road, Ste 4, Hauppauge, NY 11788

(631) 770-0700 ~ info@metrorealtyservices.com

www.metrorealtyservices.com

Exclusive Agent:

Jeremy D. Hackett

Licensed Real Estate Broker

Managing Partner

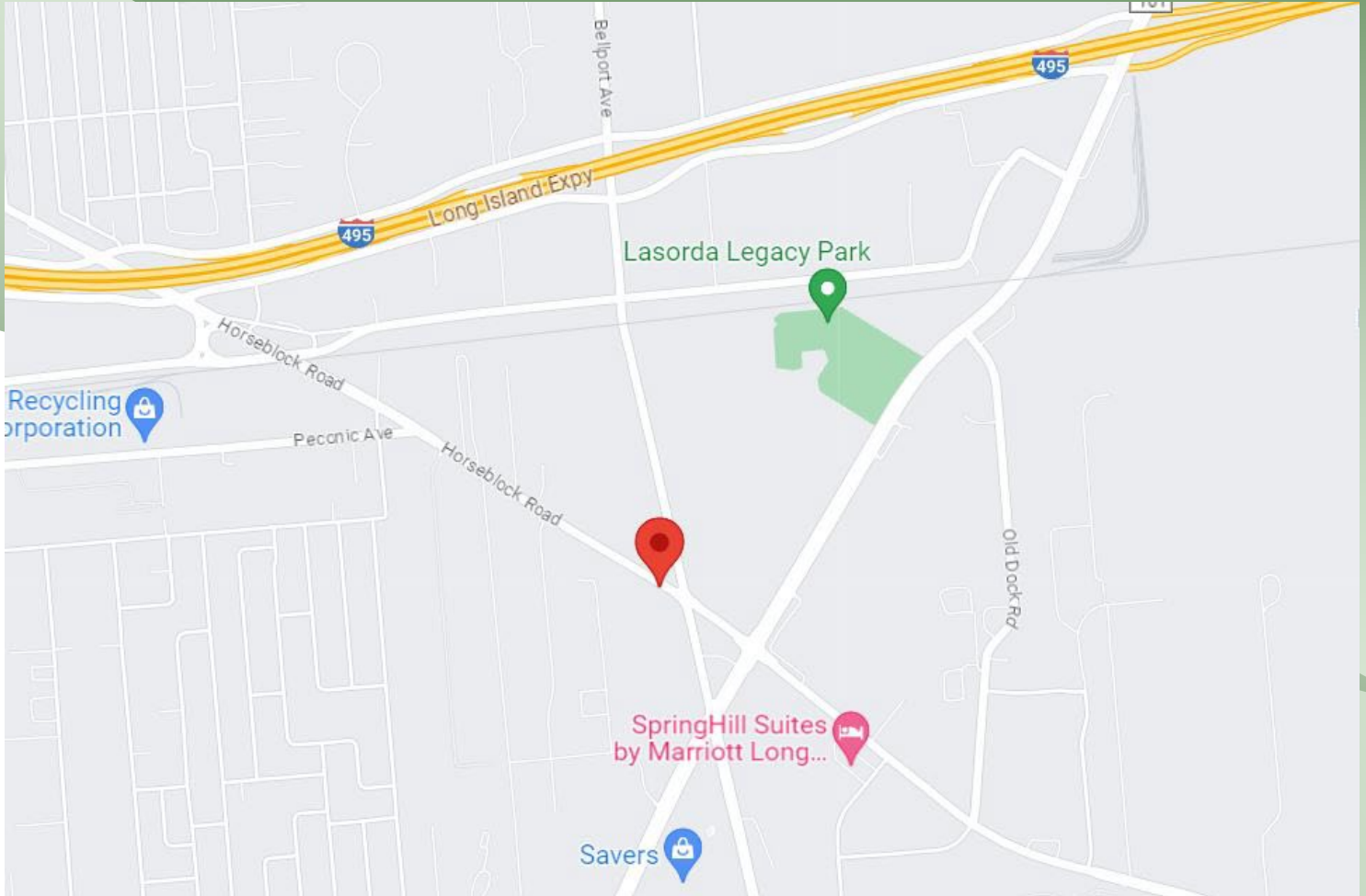
Direct: (631) 391-6359

jeremy@metrorealtyservices.com

All information submitted is subject to errors, omissions, change of price or rental, change of other terms and conditions, prior sale, lease, financing or withdrawal without notice. All areas and dimensions are approximate. This advertisement does not suggest that the broker has a listing on this property or properties or that any property is currently available.

For Sale | Industrial

3702 Horseblock Rd, Medford NY



201 Moreland Road, Ste 4, Hauppauge, NY 11788
(631) 770-0700 ~ info@metrorealtyservices.com
www.metrorealtyservices.com

Exclusive Agent:

Jeremy D. Hackett
Licensed Real Estate Broker
Managing Partner
Direct: (631) 391-6359
jeremy@metrorealtyservices.com

All information submitted is subject to errors, omissions, change of price or rental, change of other terms and conditions, prior sale, lease, financing or withdrawal without notice.
All areas and dimensions are approximate. This advertisement does not suggest that the broker has a listing on this property or properties or that any property is currently available.

For Sale | Industrial
3702 Horseblock Rd, Medford NY

Interior Photos

Office



METRO
REALTY SERVICES LLC

201 Moreland Road, Ste 4, Hauppauge, NY 11788

(631) 770-0700 ~ info@metrorealtyservices.com

www.metrorealtyservices.com

Exclusive Agent:

Jeremy D. Hackett

Licensed Real Estate Broker

Managing Partner

Direct: (631) 391-6359

jeremy@metrorealtyservices.com

All information submitted is subject to errors, omissions, change of price or rental, change of other terms and conditions, prior sale, lease, financing or withdrawal without notice. All areas and dimensions are approximate. This advertisement does not suggest that the broker has a listing on this property or properties or that any property is currently available.

For Sale | Industrial
3702 Horseblock Rd, Medford NY

Interior Photos

Hall & Bathrooms



METRO
REALTY SERVICES LLC

201 Moreland Road, Ste 4, Hauppauge, NY 11788

(631) 770-0700 ~ info@metrorealtyservices.com

www.metrorealtyservices.com

Exclusive Agent:

Jeremy D. Hackett

Licensed Real Estate Broker

Managing Partner

Direct: (631) 391-6359

jeremy@metrorealtyservices.com

All information submitted is subject to errors, omissions, change of price or rental, change of other terms and conditions, prior sale, lease, financing or withdrawal without notice. All areas and dimensions are approximate. This advertisement does not suggest that the broker has a listing on this property or properties or that any property is currently available.

For Sale | Industrial
3702 Horseblock Rd, Medford NY

Interior Photos

Main Lobby



Elevator

METRO
REALTY SERVICES LLC

201 Moreland Road, Ste 4, Hauppauge, NY 11788

(631) 770-0700 ~ info@metrorealtyservices.com

www.metrorealtyservices.com

Exclusive Agent:

Jeremy D. Hackett

Licensed Real Estate Broker

Managing Partner

Direct: (631) 391-6359

jeremy@metrorealtyservices.com

All information submitted is subject to errors, omissions, change of price or rental, change of other terms and conditions, prior sale, lease, financing or withdrawal without notice. All areas and dimensions are approximate. This advertisement does not suggest that the broker has a listing on this property or properties or that any property is currently available.

For Sale | Industrial
3702 Horseblock Rd, Medford NY

Interior Photos

Warehouse



High Bay Warehouse



Under Office



METRO
REALTY SERVICES LLC

201 Moreland Road, Ste 4, Hauppauge, NY 11788

(631) 770-0700 ~ info@metrorealtyservices.com

www.metrorealtyservices.com

Exclusive Agent:

Jeremy D. Hackett

Licensed Real Estate Broker

Managing Partner

Direct: (631) 391-6359

jeremy@metrorealtyservices.com

All information submitted is subject to errors, omissions, change of price or rental, change of other terms and conditions, prior sale, lease, financing or withdrawal without notice. All areas and dimensions are approximate. This advertisement does not suggest that the broker has a listing on this property or properties or that any property is currently available.