



Property Description

An 11,200 square foot neighborhood shopping center with mixed-use tenancy. Built in 1982 this one-story, flat roofed building is constructed of masonry, with glass retail fronts. Shopping center fascia renovated in 2004. The available square footage is currently built out for church services, with wood trim, commercial tile and carpet throughout. Crossroads Plaza has ample parking, and high visibility. Pylon and fascia signage available.

Property Highlights

- AVAILABLE FOR LEASE
- 3,585- 7,171 SF
- Pylon and Fascia Signage Available
- Ample Parking
- High Visibility

Offering Summary

Lease Rate: \$9.00 SF/yr (NNN)

Available SF: 3,585- 7,171 SF

Building Size: 11,200 SF

Demographics

	1 Mile	5 Miles	10 Miles
Total Households	1,593	79,129	198,444
Total Population	4,627	215,591	510,627
Average HH Income	\$36,759	\$47,816	\$51,771

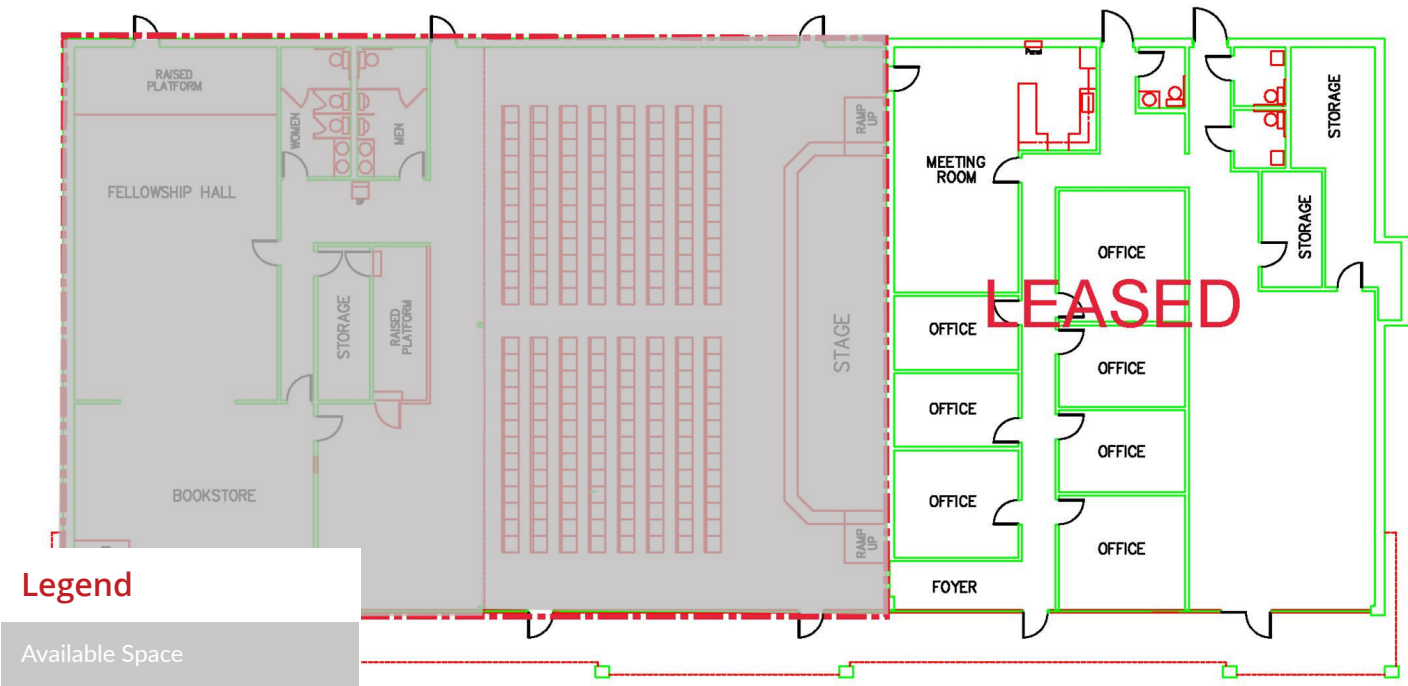
RICK PRITCHETT, CCIM

405.605.0825

rick@precorruffin.com



PRECORRUFFIN



Lease Information

Lease Type:	NNN	Lease Term:	Negotiable
Total Space:	7,171 SF	Lease Rate:	\$9.00 SF/yr

Available Spaces

Suite	Tenant	Size	Type	Rate	Description
1025	Available Space	3,585 SF	NNN	\$9.00 SF/yr	-
1023	Available Space	3,585 SF	NNN	\$9.00 SF/yr	-

RICK PRITCHETT, CCIM
405.605.0825
rick@precorruffin.com

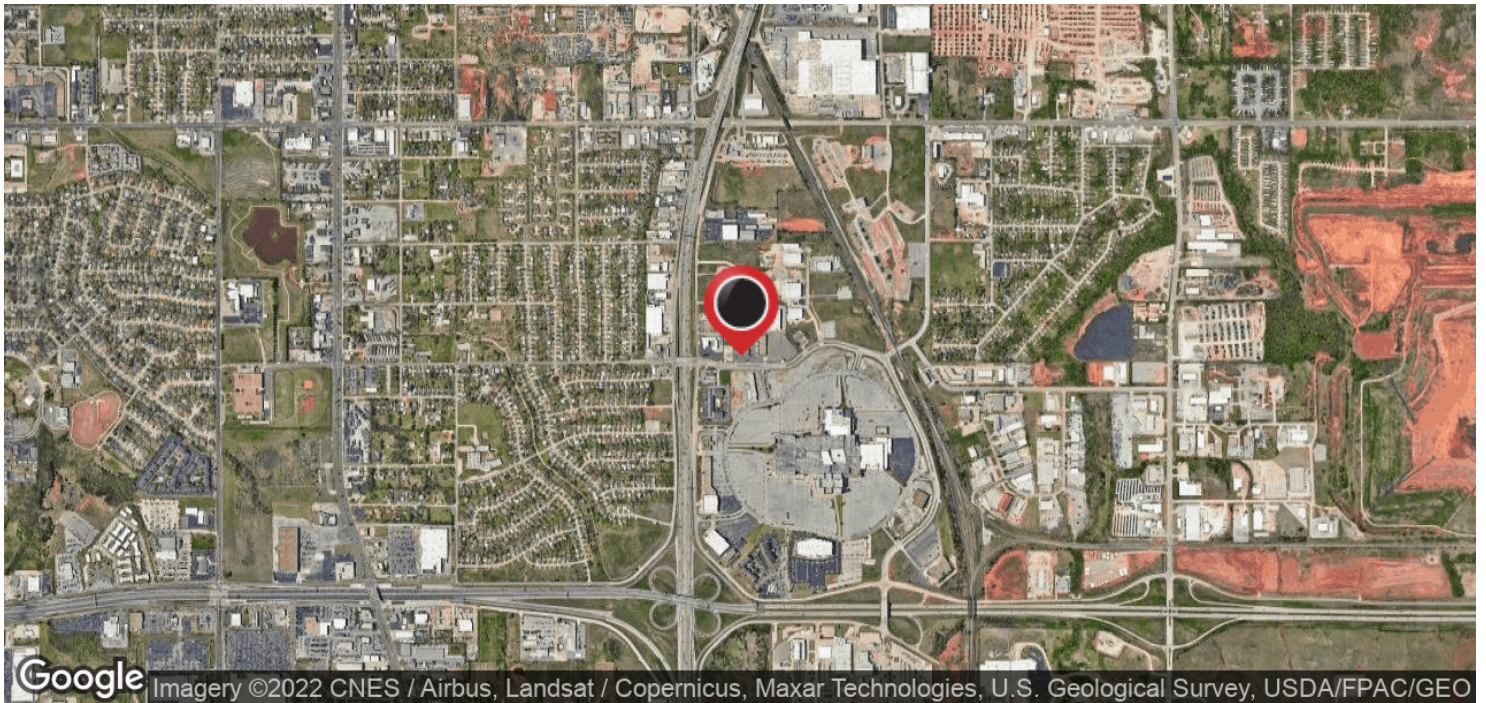
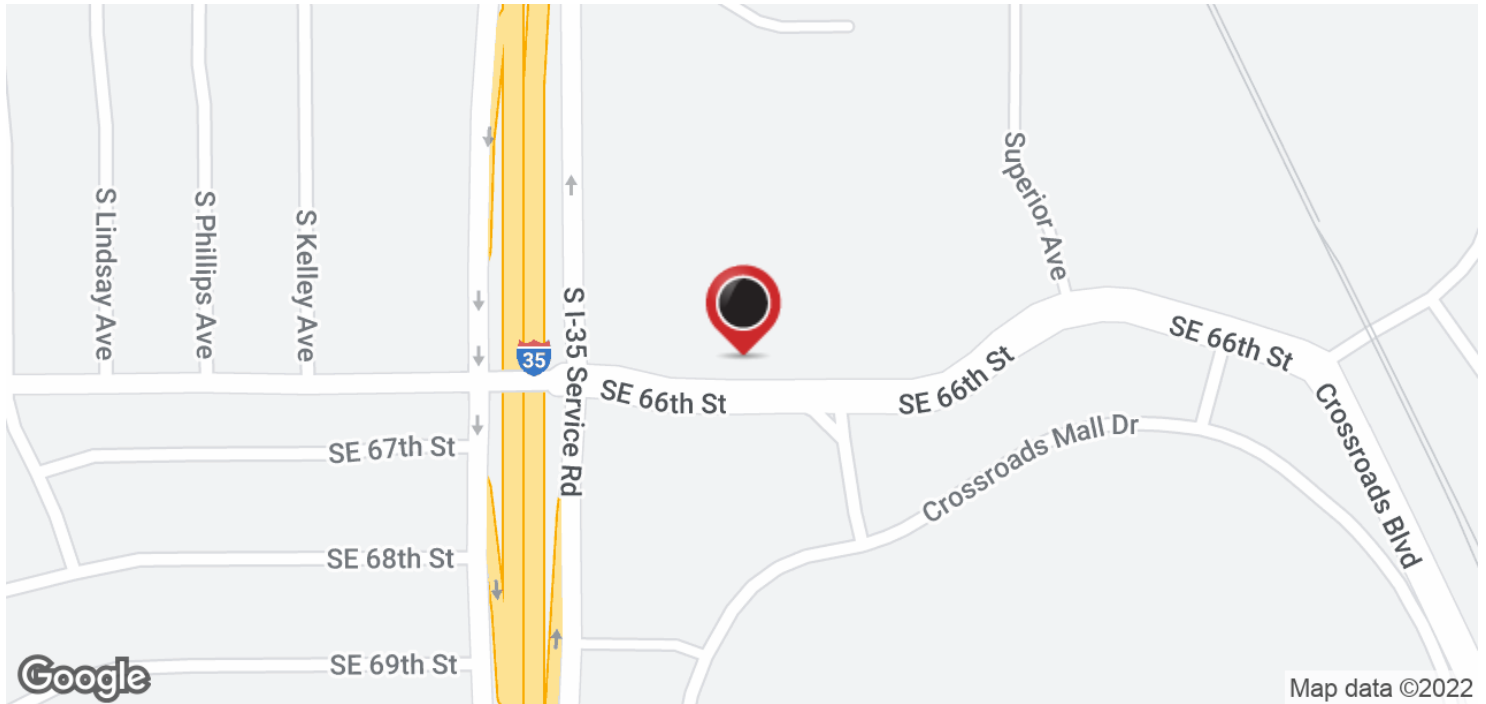


The information above has been obtained from sources believed reliable. While we do not doubt its accuracy, PrecorRuffin, LLC has not verified it and makes no guarantee, warranty or representation about it. It is your responsibility to independently confirm its accuracy.

For Lease

1025 SE 66TH STREET

CROSSROADS PLAZA



RICK PRITCHETT, CCIM

405.605.0825

rick@precorruffin.com



PRECORRUFFIN

PRECOR RUFFIN | 825 N. BROADWAY, SUITE 300, OKLAHOMA CITY, OK 73102 | 405.605.0825 | PRECORRUFFIN.COM

The information above has been obtained from sources believed reliable. While we do not doubt its accuracy, PrecorRuffin, LLC has not verified it and makes no guarantee, warranty or representation about it. It is your responsibility to independently confirm its accuracy.