

# 100 Calhoun Street

Up to ±21,041 SF Available

Charleston, South Carolina

Located in the Heart of the Historic District of Charleston



100 Calhoun Street  
Charleston, SC 29401



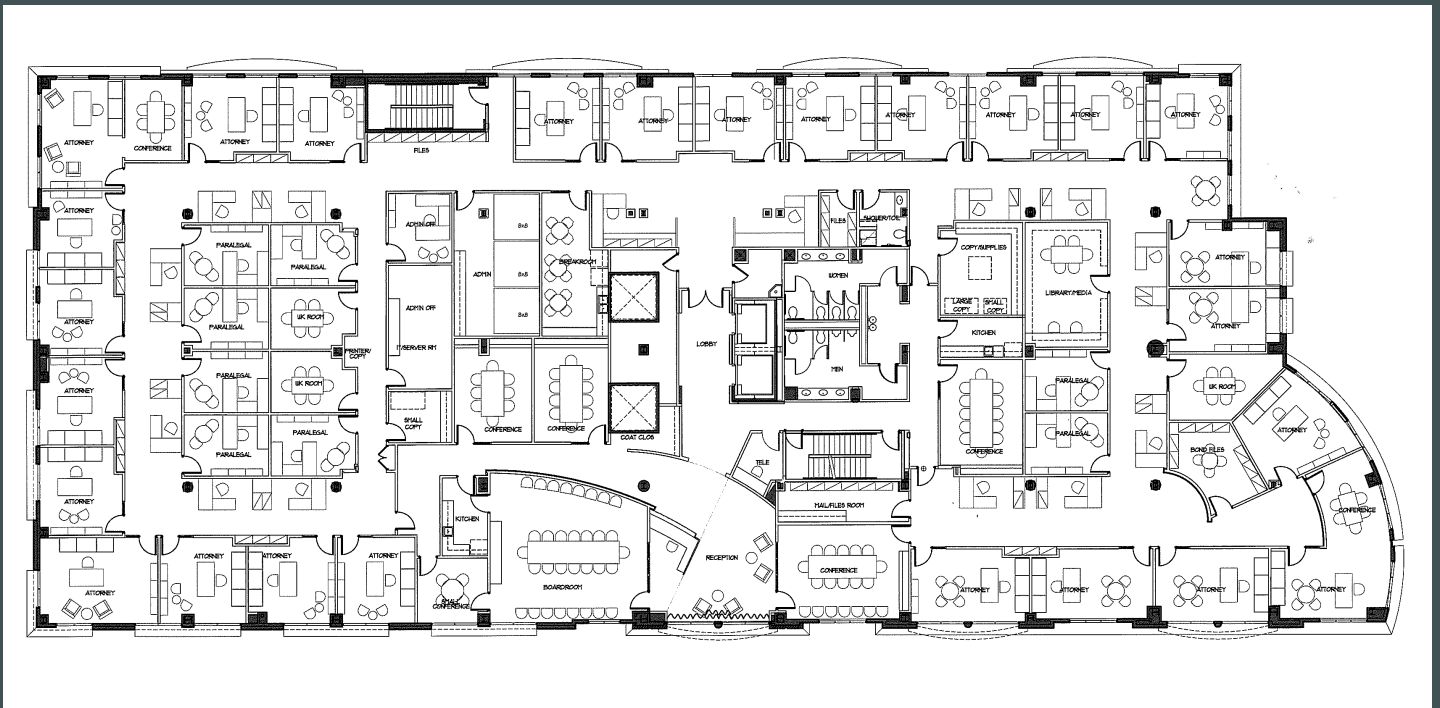
# Highlights

## Abundant Amenities, Shopping, and Restaurants

- + Class A professional multi-tenant office building
- + Located in the Heart of the Historic District of Charleston
- + Entire 4th floor is available and may be subdivided
- + Easy access to I-26
- + Ample parking on-site and in the Gaillard Garage across the street
- + Located outside of the heavy tourist area
- + Eight on-site parking spaces are available with the floor at \$200 per month per space. Additional parking is available in the Gaillard Center Garage at \$145 for business hour use and \$185 for 24 hour use
- + ±5,000 - 21,041 SF Available
- + \$37.00 PSF, Full Service

100 Calhoun Street  
Charleston, SC 29401

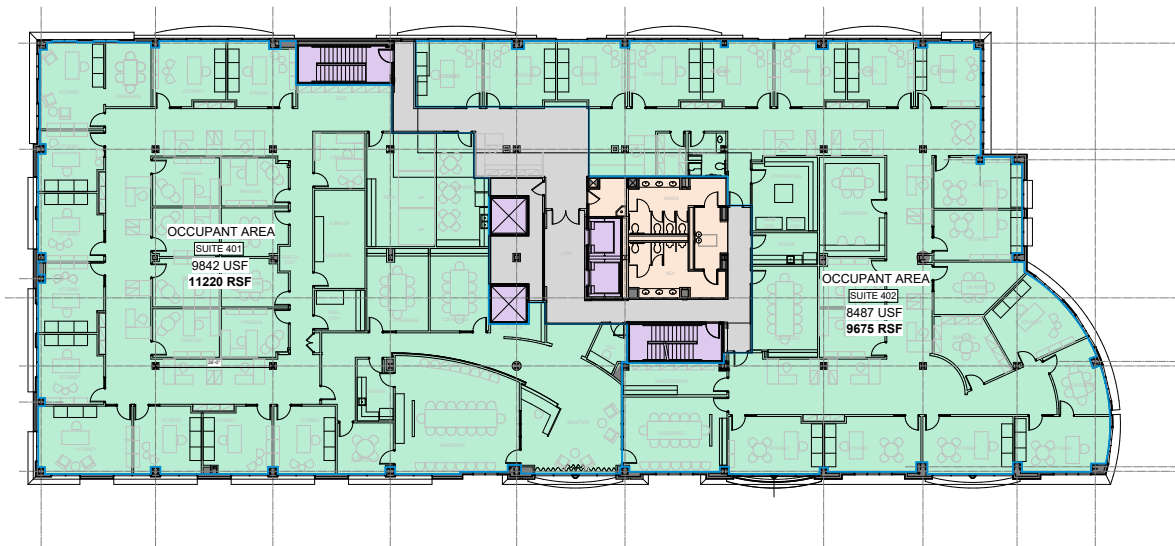
# Floor Plan



4th Floor

±5,000 - 21,041 SF

# Subdivision Plan



**FOURTH LEVEL**

21190 BOMA GSF

FLOOR SERVICE AREA 706 SF  
MAJOR VERT PENETRATION 715 SF  
BASE BUILDING CIRCULATION 1440 SF

100 Calhoun Street  
Charleston, SC 29401

For Lease



## Contact Us

**Charles Carmody**

Senior Vice President

+1 843 577 1155

charles.carmody@cbre.com

**Ryan Carmody**

Senior Associate

+1 843 577 1162

ryan.carmody@cbre.com

© 2024 CBRE, Inc. All rights reserved. This information has been obtained from sources believed reliable, but has not been verified for accuracy or completeness. You should conduct a careful, independent investigation of the property and verify all information. Any reliance on this information is solely at your own risk. CBRE and the CBRE logo are service marks of CBRE, Inc. All other marks displayed on this document are the property of their respective owners, and the use of such logos does not imply any affiliation with or endorsement of CBRE. Photos herein are the property of their respective owners. Use of these images without the express written consent of the owner is prohibited.

[www.cbre.com/southcarolina](http://www.cbre.com/southcarolina)

**CBRE**