



# BUILD TO SUIT OPPORTUNITY FOR SALE OR LEASE

Midway Industrial Park



**LEE & ASSOCIATES**  
GREENVILLE/SPARTANBURG

**Micah Williams**

Senior Vice President  
864.477.0455  
mwilliams@lee-associates.com

**Randall Bentley, SIOR, CCIM**

President/Managing Principal  
864.444.2842  
rbentley@lee-associates.com

**864.704.1040**  
LeeUpstate.com

## Call for Pricing

- 10,000-39,800 SF of Industrial Space
- ±0.5 Miles from I-85
- Can Deliver in Less Than 12 Months



**LOCATION**  
±0.5 MILES TO I-85



**OFFICE**  
BUILD TO SUIT



**UTILITIES**  
ALL AVAILABLE



**LIGHTING**  
LED THROUGHOUT

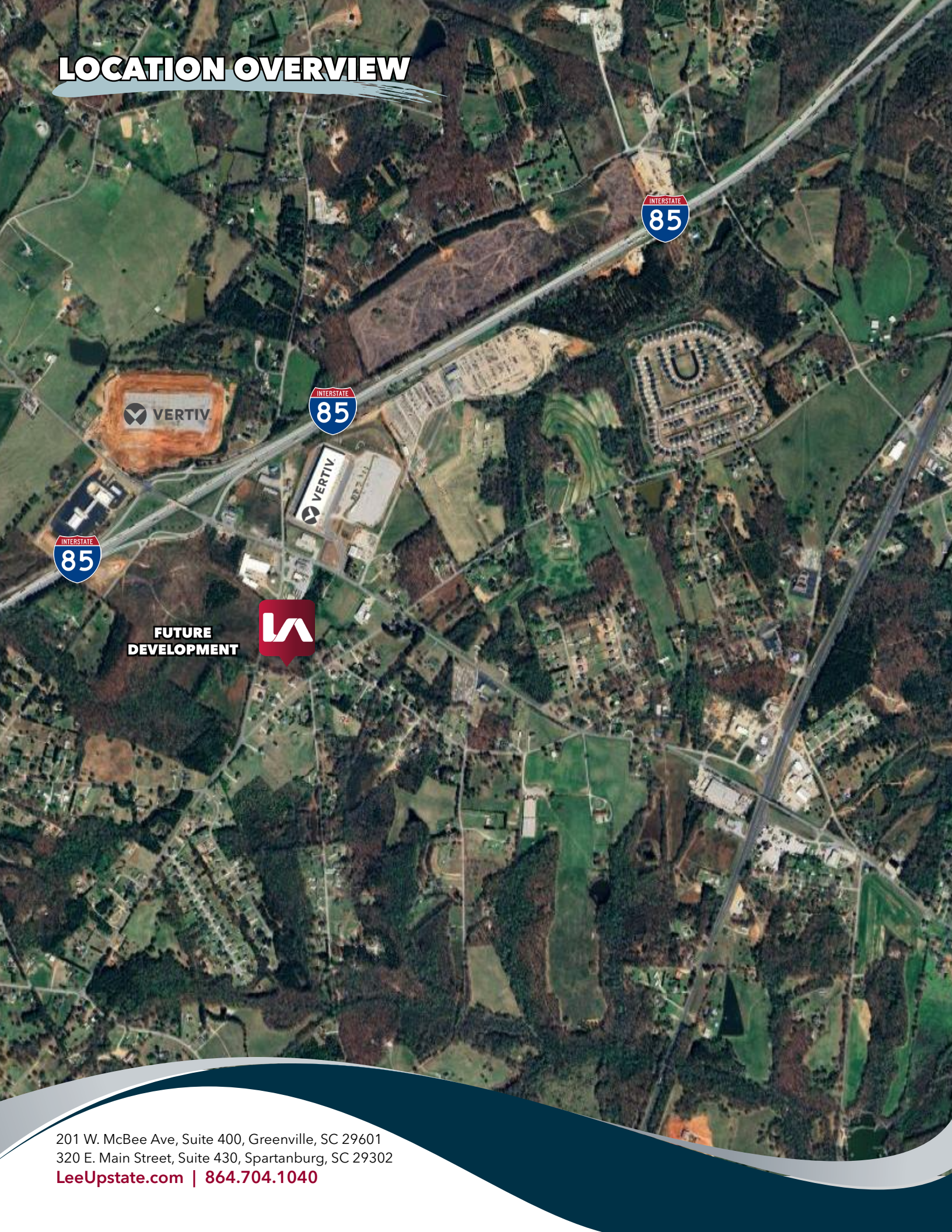
# PROPERTY OVERVIEW & PHOTOS

PROPERTY NAME	Midway Industrial Park
TYPE	Industrial
TOTAL AVAILABLE SF	10,000-39,800 SF
TAX MAP #	1930015022
COUNTY	Anderson
CITY LIMITS	No
ZONING	None

YEAR BUILT	Build To Suit
OFFICE SF	Build To Suit
CEILING HEIGHT	Minimum 24'
DOCK DOORS	Two (2) per Building
DRIVE-IN DOORS	One (1) per Building
LIGHTING	LED
PARKING	30 Spaces



# LOCATION OVERVIEW



**FUTURE  
DEVELOPMENT**



201 W. McBee Ave, Suite 400, Greenville, SC 29601  
320 E. Main Street, Suite 430, Spartanburg, SC 29302  
[LeeUpstate.com](http://LeeUpstate.com) | **864.704.1040**

# SITE PLAN

**SCDOT Note:**  
 No landscaping or irrigation to be installed in SCDOT Right-Of-Way.  
 Notify Anderson County Roads and Bridges and/or SCDOT prior to working within any road R/W.

Gray Industrial Realty 8 LLC  
 Slide 140, Page 9  
 D.B. 14505, Page 262  
 TMS # 193-00-15-005

7 Eleven Inc.  
 Slide 1534, Page 3A  
 D.B. 19876, Page 272  
 TMS # 193-00-14-006

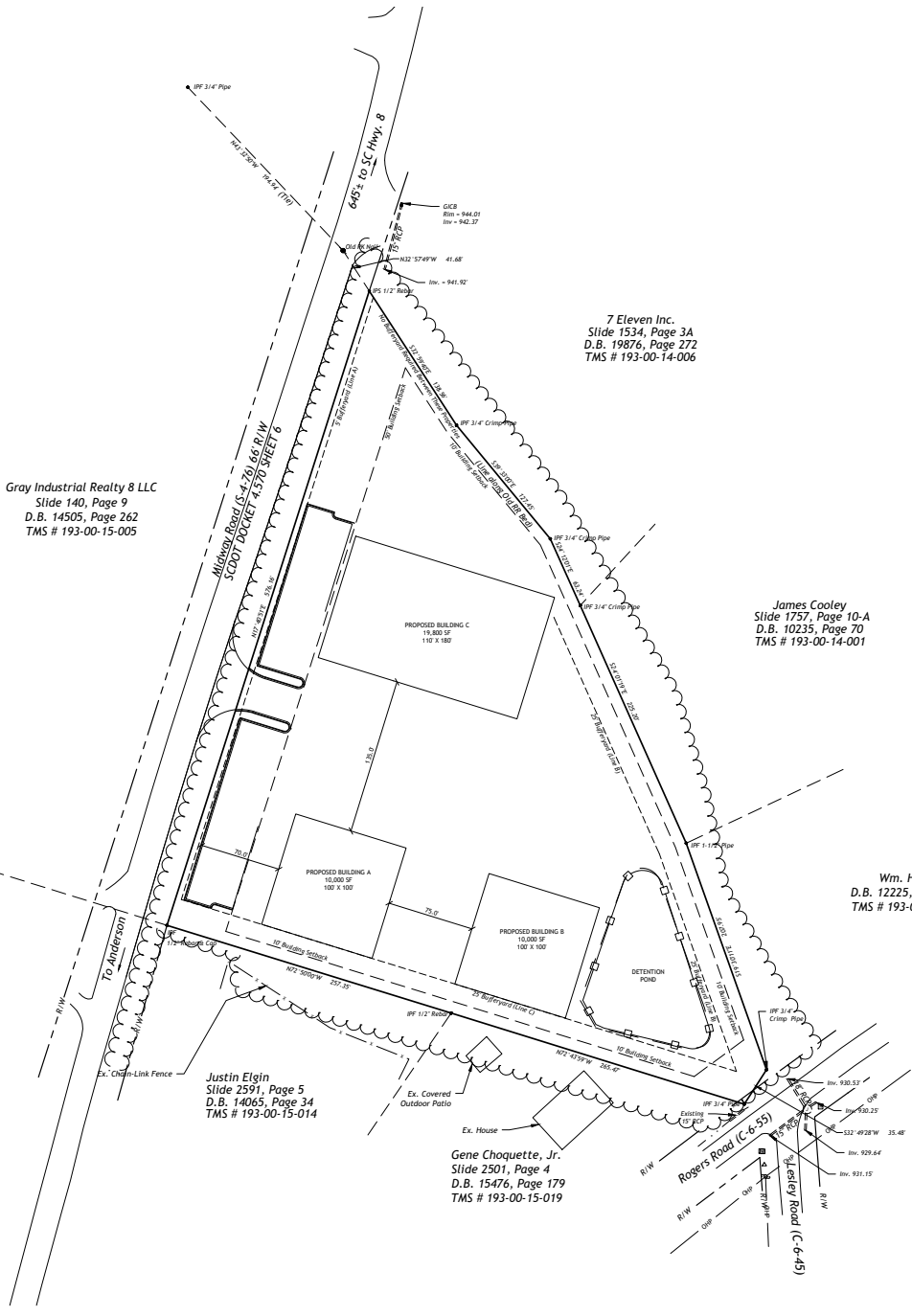
James Cooley  
 Slide 1757, Page 10-A  
 D.B. 10235, Page 70  
 TMS # 193-00-14-001

Wm. Hood  
 D.B. 12225, Page 208  
 TMS # 193-00-14-004

Justin Elgin  
 Slide 2591, Page 5  
 D.B. 14065, Page 34  
 TMS # 193-00-15-014

Gene Choquette, Jr.  
 Slide 2501, Page 4  
 D.B. 15476, Page 179  
 TMS # 193-00-15-019

\*\*\*CAUTION\*\*\*





# LEARN MORE GIVE US A CALL



LEE & ASSOCIATES  
GREENVILLE/SPARTANBURG

**864.704.1040**  
**LeeUpstate.com**

**GREENVILLE OFFICE**  
201 W. McBee Ave, Suite 400  
Greenville, SC 29601

**SPARTANBURG OFFICE**  
320 E. Main Street, Suite 430  
Spartanburg, SC 29302

All information furnished regarding the properties and information in this packet is from sources deemed reliable, but no warranty or representation is made to the accuracy thereof and same is submitted to errors, omissions, change of price, rental or other conditions prior to sale, lease or financing or withdrawal without notice. No liability of any kind is to be imposed on the broker herein.



**Micah Williams**  
Senior Vice President  
864.477.0455  
mwilliams@lee-associates.com



**Randall Bentley, SIOR, CCIM**  
President/ Managing Principal  
864.444.2842  
rbentley@lee-associates.com