



Space Available For Sublease

Hayden Corporate Center

8283 N Hayden Rd | Suite 150
Scottsdale, AZ

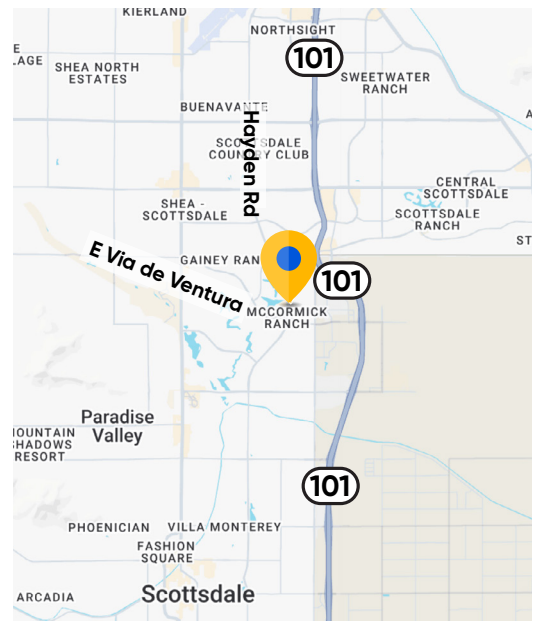
Overview

Building:	8283 N Hayden Rd, Scottsdale, AZ 85258
Available:	Suite 150 2,187 SF
Term:	Through March 2027
Availability:	Immediate
Starting Rental Rate:	\$19.50/RSF/YR
Parking:	4.10/1,000 SF

Click Here For Virtual Tour  **Matterport**

Property Highlights

- On-site fitness center
- Located within the prestigious McCormick Ranch master planned community
- Amenities within one mile, including shopping centers, and a 27-hole championship golf course
- Freeways easily accessible via Loop 101



For more information:



Brandon Clarke
602.770.3464 mobile
bclarke@cresa.com



Jake Bonnell
602.826.8615 mobile
jbonnell@cresa.com

Cresa

2398 E Camelback Rd. Suite 900
Phoenix, AZ 85016

Sublease Available

cresa

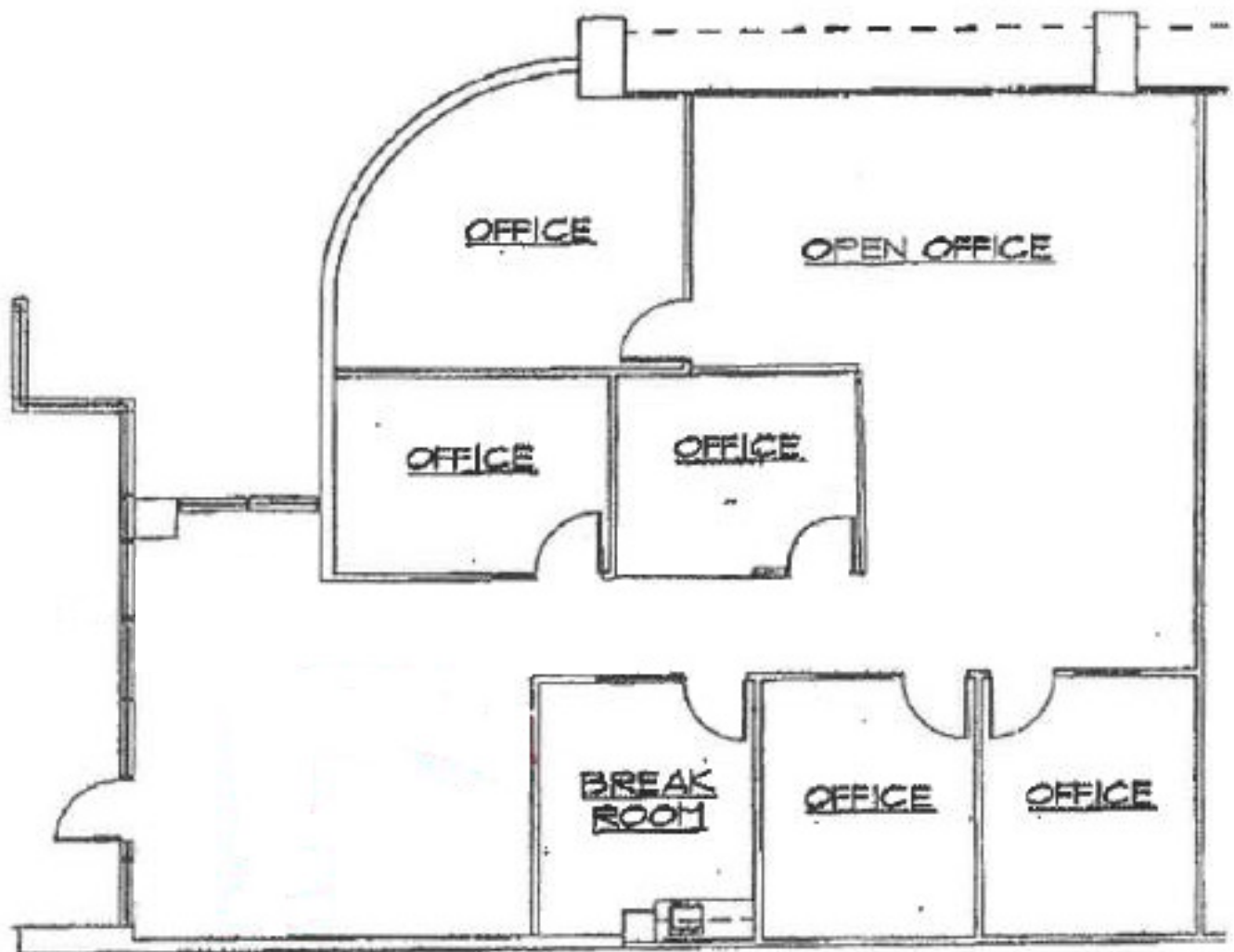
8283 N Hayden Rd
Scottsdale, AZ

Suite 150 | 2,187 SF

[Click Here For Virtual Tour](#)  **Matterport®**

Space Highlights

- Located off of the first floor lobby
- Excellent North-facing window line, providing exceptional natural light in the space
- Monument signage available



Cresa © 2025. All rights reserved. The information contained in this document has been obtained from sources believed reliable. While Cresa does not doubt its accuracy, Cresa has not verified it and makes no guarantee, warranty, or representation about it. It is your responsibility to independently confirm its accuracy and completeness. Any projections, opinions, assumptions or estimates used are for example only and do not represent the current or future performance of the property. The value of this transaction to you depends on tax and other factors which should be evaluated by your tax, financial and legal advisors. You and your advisors should conduct a careful, independent investigation of the property to determine to your satisfaction the suitability of the property for your needs.

Sublease Available

cresa

8283 N Hayden Rd

Scottsdale, AZ

Click Here For Virtual Tour  **Matterport**



Sublease Available

cresa

8283 N Hayden Rd

Scottsdale, AZ

Location & Amenities

Click Here For Virtual Tour  **Matterport**



For more information:

Brandon Clarke
602.770.3464 mobile
bclarke@cresa.com

Jake Bonnell
602.826.8615 mobile
jbonnell@cresa.com

Cresa
2398 E Camelback Rd. Suite 900
Phoenix, AZ 85016