

Available  
For Sale

Price  
Reduction

53,100 SF  
Industrial/  
Manufacturing  
Facility

## 506-508 Pasadena Avenue

Crest Hill, Illinois 60403

### PROPERTY HIGHLIGHTS

Well-maintained, 53,100 SF freestanding industrial/manufacturing facility located on 2.14 acres in Will County. Offers 4,300 SF of office space, 1 exterior dock, 4 drive-in doors and 50+ car parking spaces.



53,100 SF  
AVAILABLE FOR SALE



14' - 18'  
CEILING HEIGHT



1 TRUCK DOCK  
4 DRIVE-IN DOORS



HEAVY POWER  
5,400 AMPS  
240-600V



PARTIAL  
WAREHOUSE A/C



ASKING PRICE:  
~~\$3,398,400~~  
\$3,050,00

### Broker Contact Info

Steve Connolly  
+1 630 693 0642  
sconnolly@hiffman.com

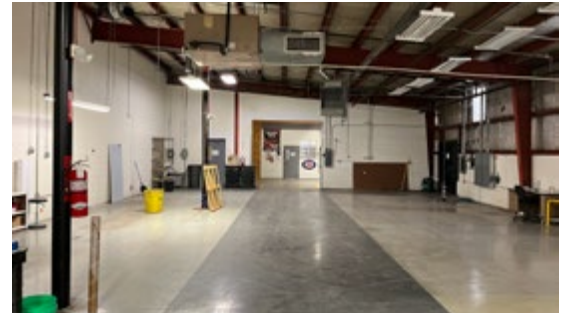
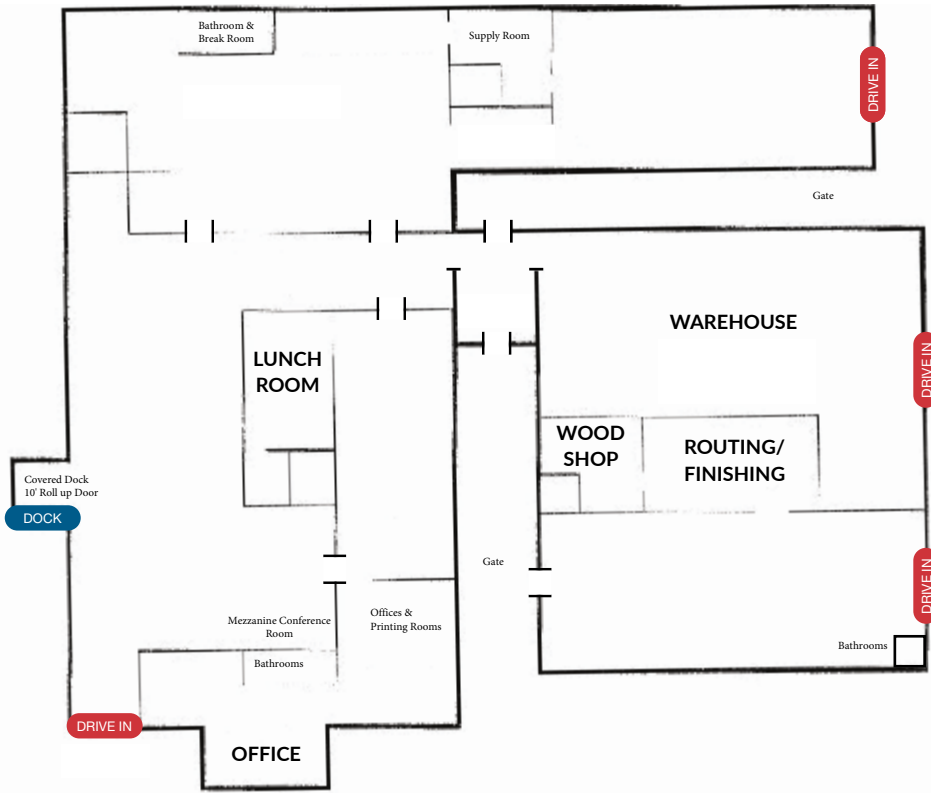
Michael Kraft  
+1 630 693 0661  
mkraft@hiffman.com

Mark Moran  
+1 630 693 0656  
mmoran@hiffman.com

One Oakbrook Terrace  
Suite 400  
Oakbrook Terrace, Illinois 60181  
+1 630 932 1234

NO WARRANTY OR REPRESENTATION, EXPRESS OR IMPLIED, IS MADE AS TO THE ACCURACY OF THE INFORMATION CONTAINED HEREIN, AND THE SAME IS SUBMITTED SUBJECT TO ERRORS, OMISSIONS, CHANGE OF PRICE, RENTAL OR OTHER CONDITIONS, PRIOR SALE, LEASE OR FINANCING, OR WITHDRAWAL WITHOUT NOTICE, AND OF ANY SPECIAL LISTING CONDITIONS IMPOSED BY OUR PRINCIPALS NO WARRANTIES OR REPRESENTATIONS ARE MADE AS TO THE CONDITION OF THE PROPERTY OR ANY HAZARDS CONTAINED THEREIN ARE ANY TO BE IMPLIED.

## SITE PLAN



CALL A NAI HIFFMAN BROKER TODAY!

### Steve Connolly

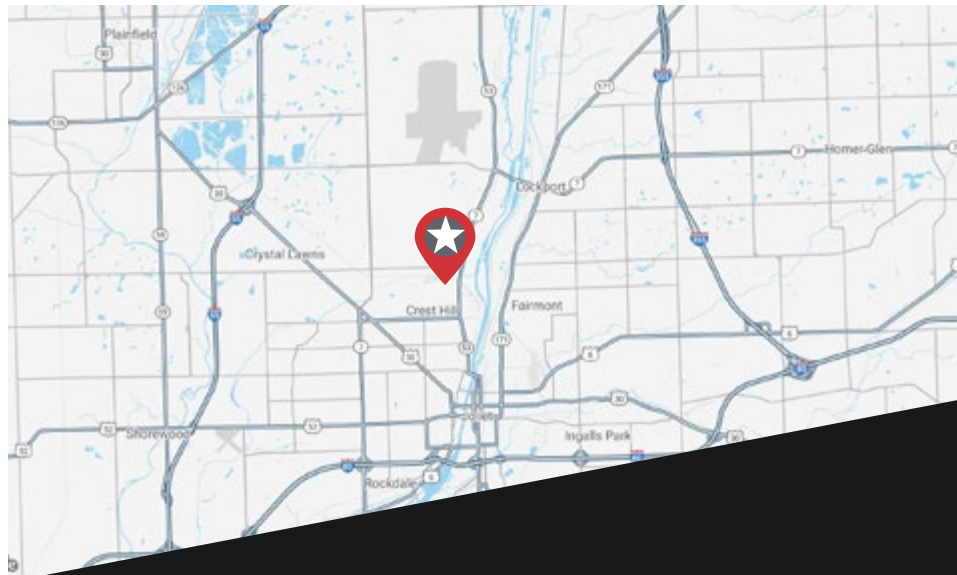
+1 630 693 0642  
sconnolly@hiffman.com

### Michael Kraft

+1 630 693 0661  
mkraft@hiffman.com

### Mark Moran

+1 630 693 0656  
mmoran@hiffman.com



One Oakbrook Terrace  
Suite 400  
Oakbrook Terrace, Illinois 60181  
+1 630 932 1234