



# RETAIL SPACE AVAILABLE

**2,247 SF AVAILABLE IMMEDIATELY**  
501 E. GREEN STREET, CHAMPAIGN, IL



## Immediate Co-Tenants



## Demographics

	<u>1 Mile</u>	<u>3 Mile</u>	<u>5 Mile</u>
Population	41,230	109,067	149,344
Avg. Household Income:	\$24,000	\$52,550	\$64,439
Daytime Pop.:	41,484	87,508	102,680

## Area Co-Tenancy



## Highlights

- 2,247 SF of rare restaurant space available in the heart of campus-town
- Immediate proximity to the University of Illinois (49,399 students) which has seen consistent enrollment increases over the last 10+ years
- Chipotle, Potbelly, Panera, Panda Express, Target (under construction), Noodles & Company, and more anchor this vibrant retail corridor
- High barrier to entry market
- Available immediately

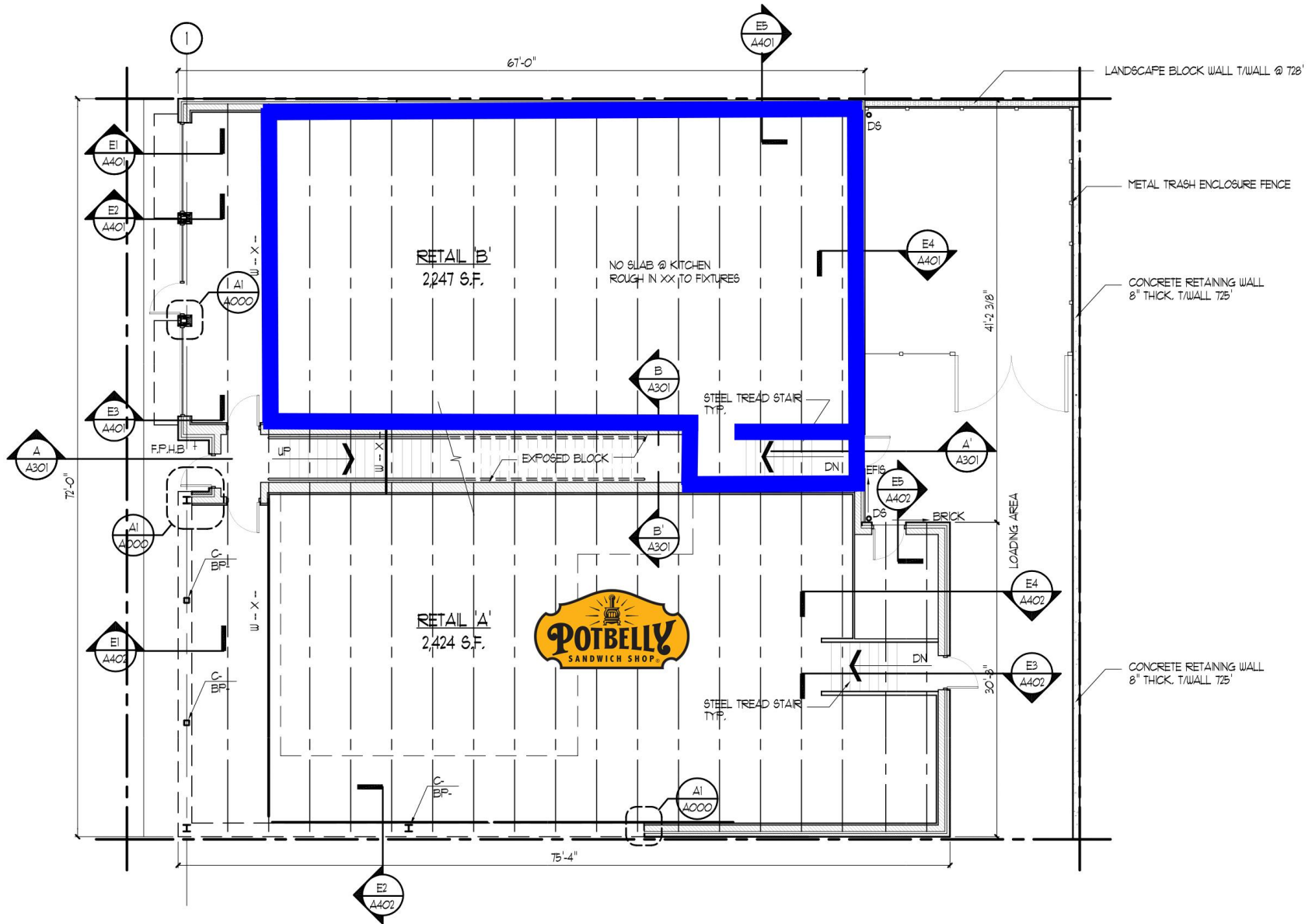
## For More Information

### Tartan Realty Group, Inc.

350 W. Hubbard St. #640  
Chicago, IL 60654  
Brendan Watt/Chris Barr  
312.605.8535/217.493.6269  
brendan@tartanrealtygroup.com  
c.barr@tartanrealtygroup.com



# FLOOR PLAN







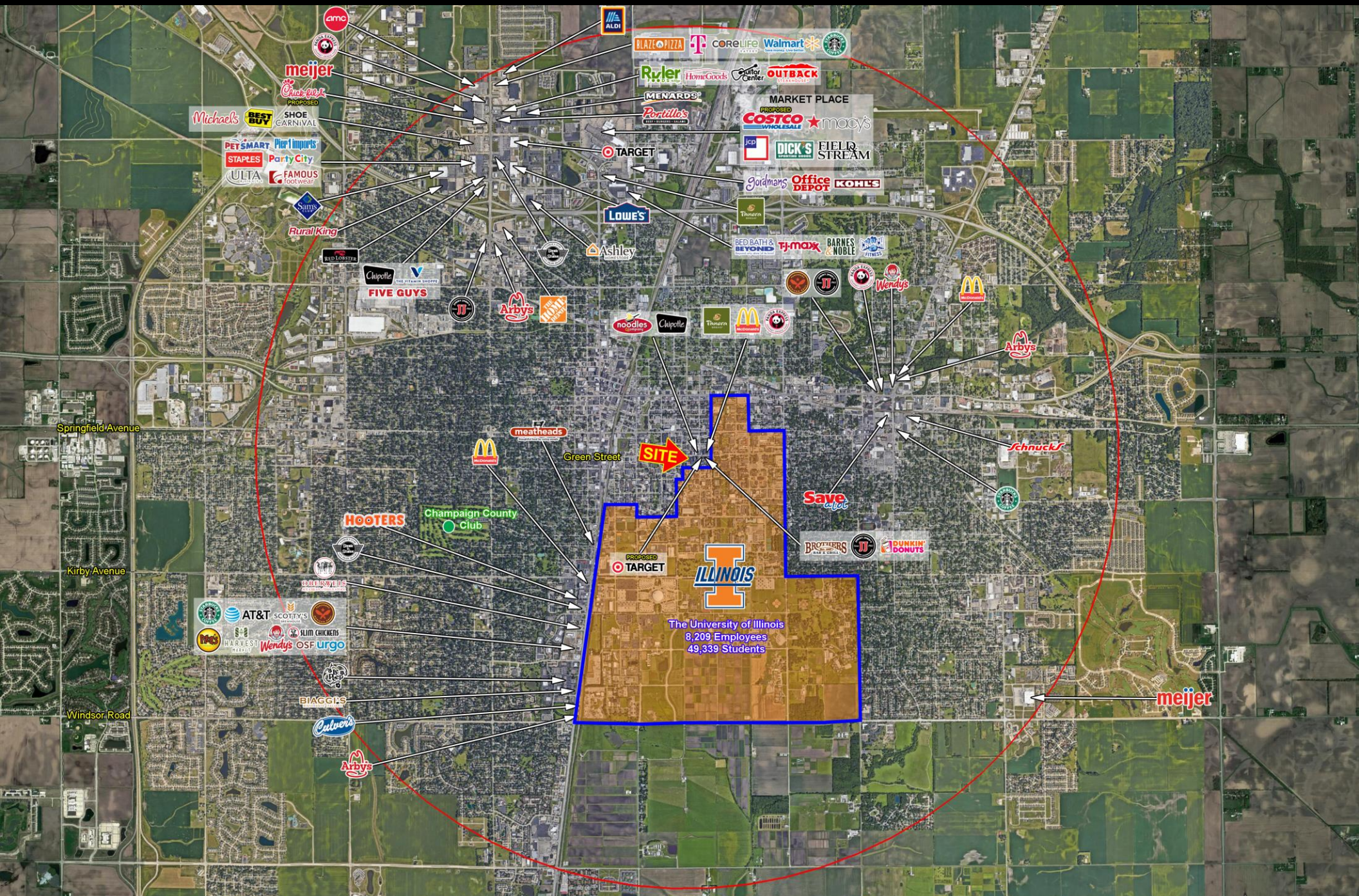




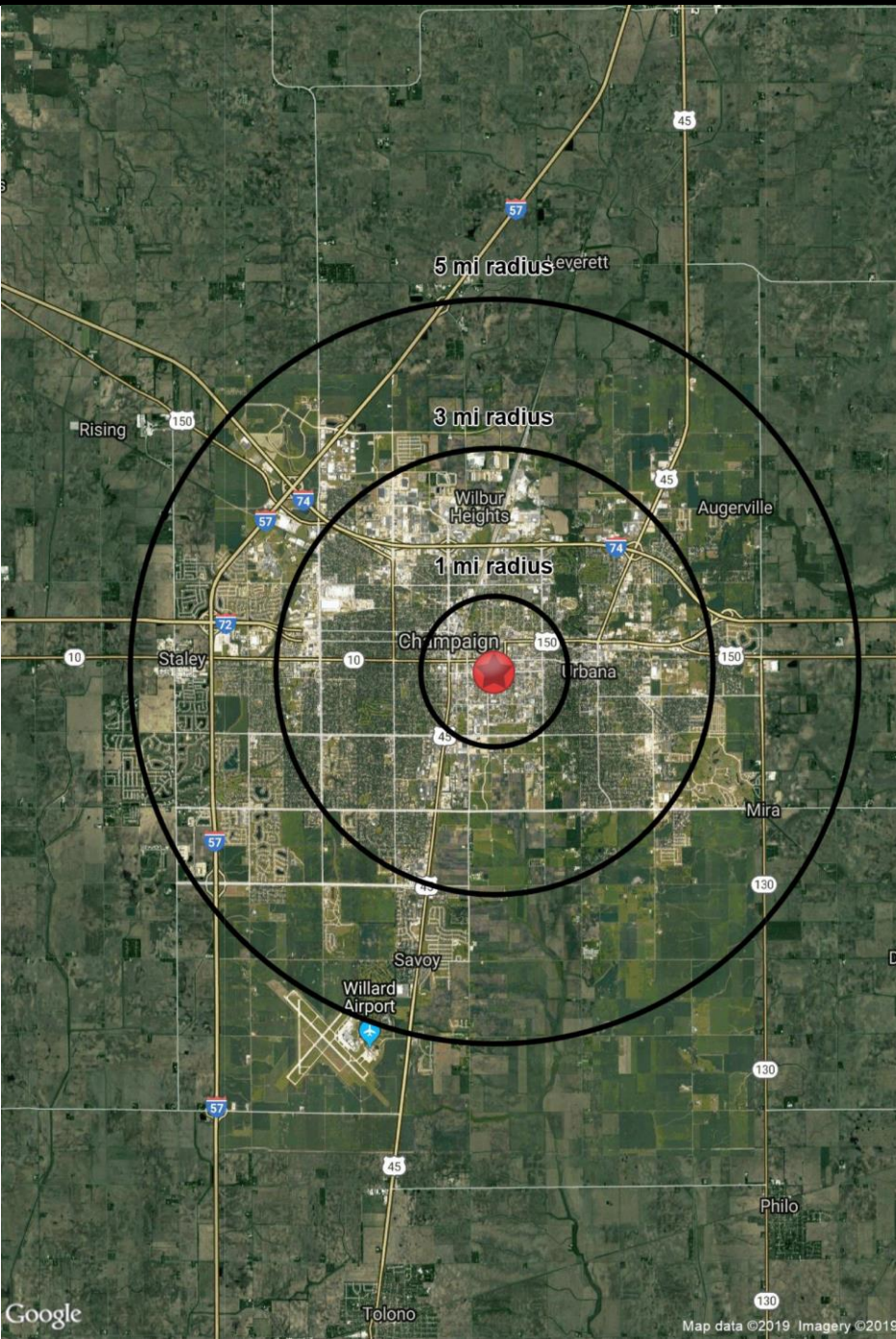




# MARKET AERIAL







501 E Green St

Champaign, IL 61820

1 mi radius 3 mi radius 5 mi radius

POPULATION	2019 Estimated Population	41,230	109,067	149,344
	2024 Projected Population	41,053	109,576	149,915
	2010 Census Population	37,670	103,341	141,504
	2000 Census Population	34,090	97,330	125,035
	Projected Annual Growth 2019 to 2024	-	-	-
	Historical Annual Growth 2000 to 2019	1.1%	0.6%	1.0%
	2019 Median Age	22.5	30.1	31.7
HOUSEHOLDS	2019 Estimated Households	14,091	47,102	64,544
	2024 Projected Households	14,616	49,059	67,082
	2010 Census Households	11,703	41,929	57,541
	2000 Census Households	10,889	39,209	50,140
	Projected Annual Growth 2019 to 2024	0.7%	0.8%	0.8%
	Historical Annual Growth 2000 to 2019	1.5%	1.1%	1.5%
RACE AND ETHNICITY	2019 Estimated White	58.2%	60.3%	62.6%
	2019 Estimated Black or African American	11.7%	17.4%	16.4%
	2019 Estimated Asian or Pacific Islander	24.4%	15.8%	14.9%
	2019 Estimated American Indian or Native Alaskan	0.2%	0.3%	0.3%
	2019 Estimated Other Races	5.5%	6.2%	5.9%
	2019 Estimated Hispanic	6.8%	7.2%	6.6%
INCOME	2019 Estimated Average Household Income	\$24,000	\$52,550	\$64,439
	2019 Estimated Median Household Income	\$20,533	\$44,360	\$54,312
	2019 Estimated Per Capita Income	\$9,561	\$23,296	\$28,306
EDUCATION (AGE 25+)	2019 Estimated Elementary (Grade Level 0 to 8)	1.1%	1.7%	1.7%
	2019 Estimated Some High School (Grade Level 9 to 11)	2.9%	3.5%	3.1%
	2019 Estimated High School Graduate	14.5%	19.0%	18.4%
	2019 Estimated Some College	16.4%	19.1%	18.6%
	2019 Estimated Associates Degree Only	6.4%	7.0%	7.8%
	2019 Estimated Bachelors Degree Only	25.8%	22.5%	23.4%
	2019 Estimated Graduate Degree	32.9%	27.4%	27.0%
BUSINESS	2019 Estimated Total Businesses	1,620	5,196	6,321
	2019 Estimated Total Employees	41,484	87,508	102,680
	2019 Estimated Employee Population per Business	25.6	16.8	16.2
	2019 Estimated Residential Population per Business	25.5	21.0	23.6