



# For sublease

8236 Lankershim Blvd | North Hollywood, CA



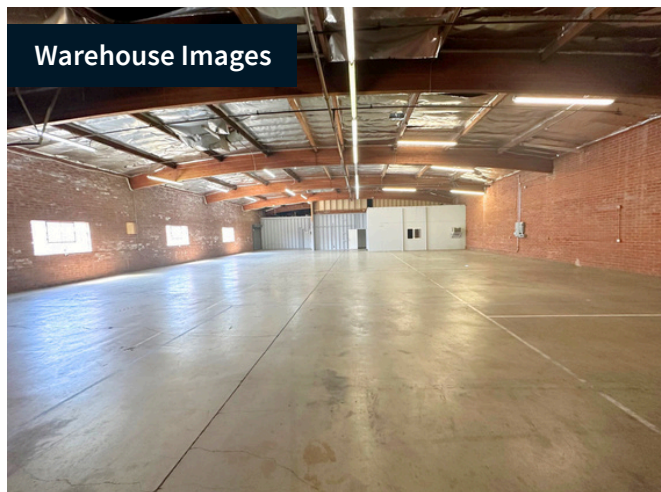
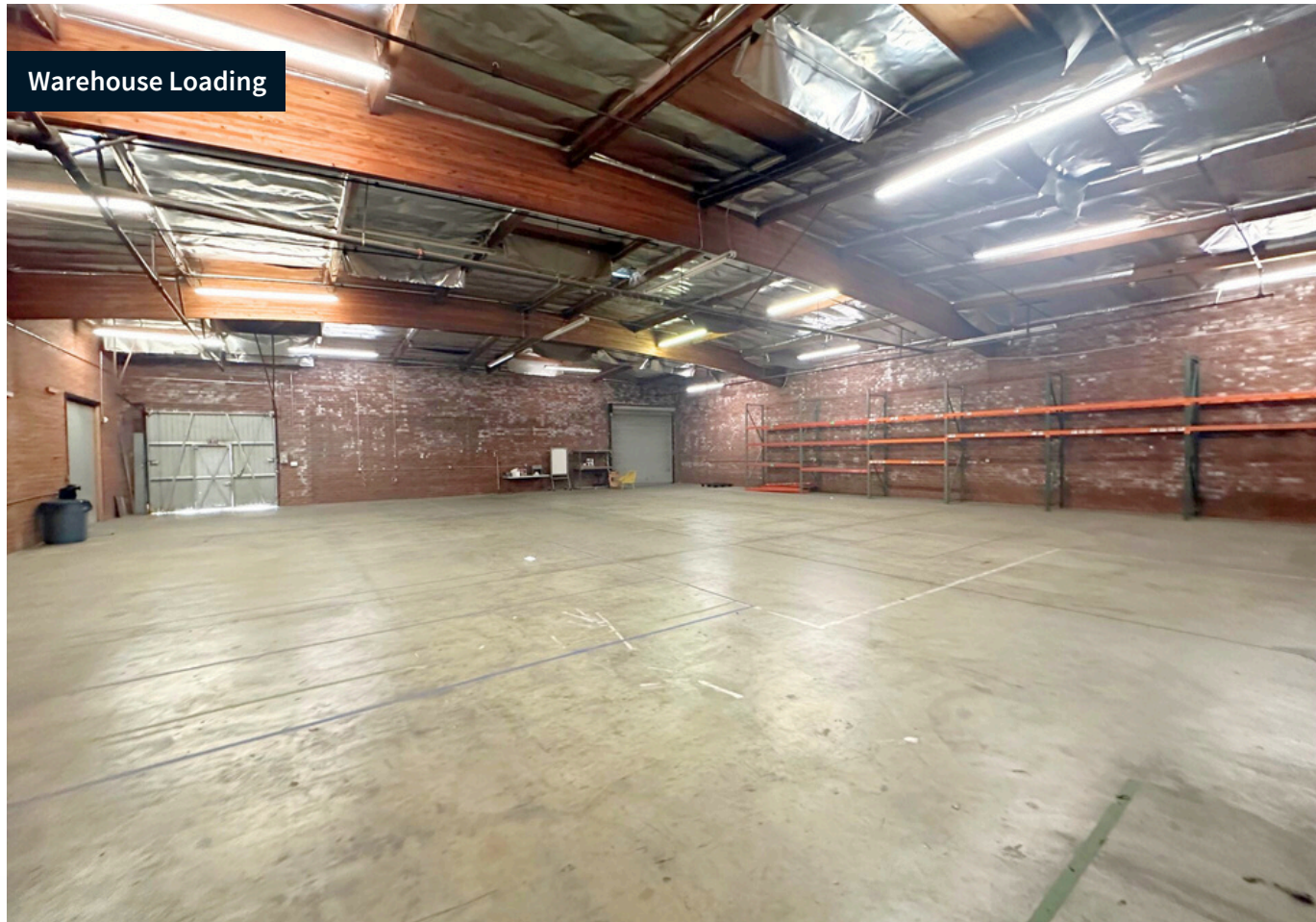


# Property Details

## Building Specs

Term Expiration	January 2027
Available SF	15,823SF
Office SF	2,000 SF
Clear Height	16'
Ground Level Doors	1   12'x12'
Dock High Doors	3
Zoning	LAM-1
Parking Ratio	1.90/1,000 SF

- Possession now
- Great manufacturing/distribution facility
- Sprinklered
- Fenced and secured yard
- 30 Parking spaces
- Long term lease possible





# Location

8236 Lankershim Blvd boasts an outstanding travel commute. Positioned in a prime location, it offers immediate access to major freeways like the I-5 and CA 170, as well as various public transportation options such as the LA Metro. Additionally, the Hollywood Burbank Airport is several minutes away from the property, ensuring ease and efficiency for domestic travelers traveling within the San Fernando Valley. With its placement within the SFV and proximity to local amenities & major highways, the location offers ample transportation throughout Los Angeles County.

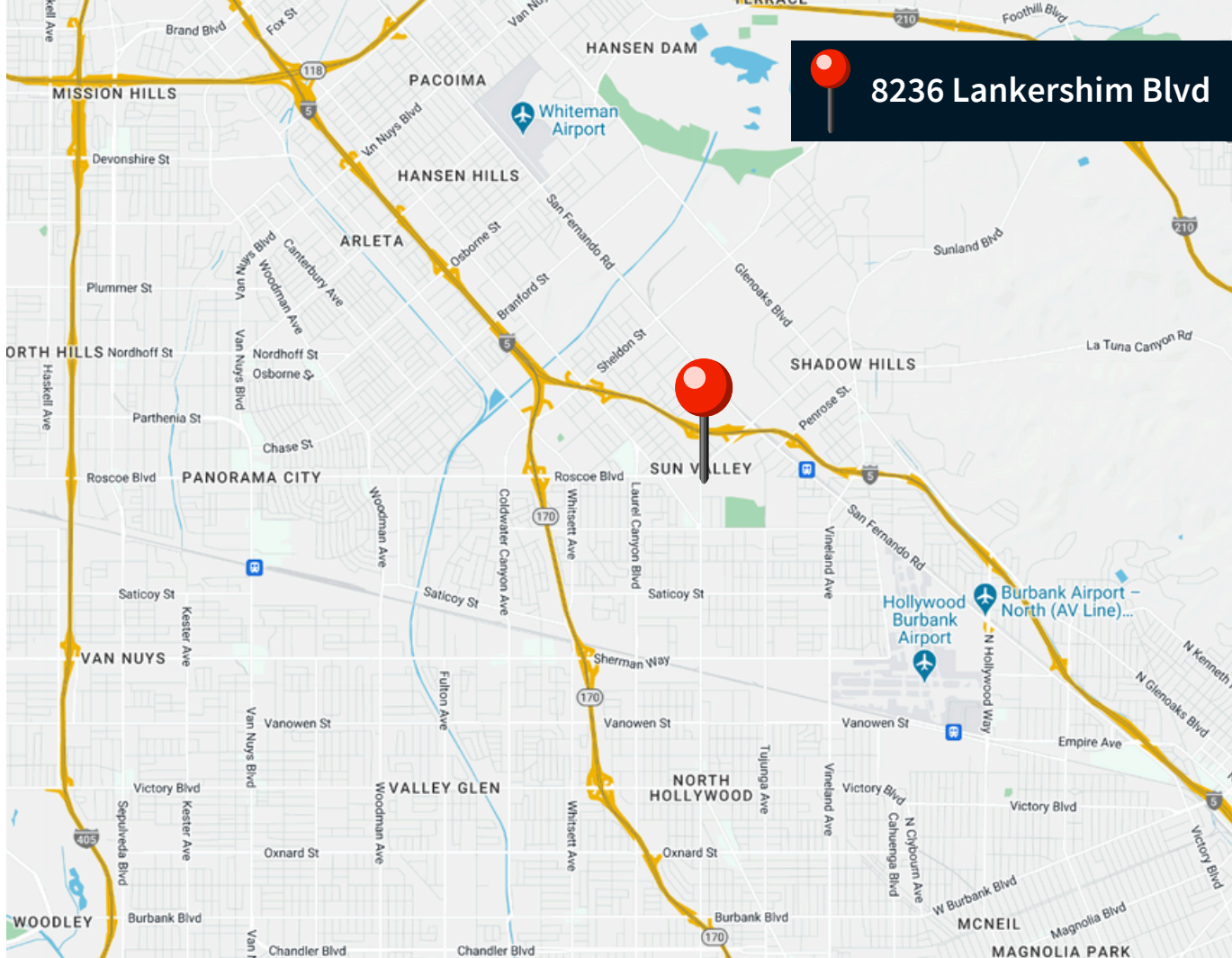
## Key Location Distances

### Major Freeways

- 0.4 miles from I-5 freeway
- 1.6 miles from CA-170 freeway
- 5.5 miles from CA-118 freeway
- 7.9 miles from CA-134 freeway

### Airports

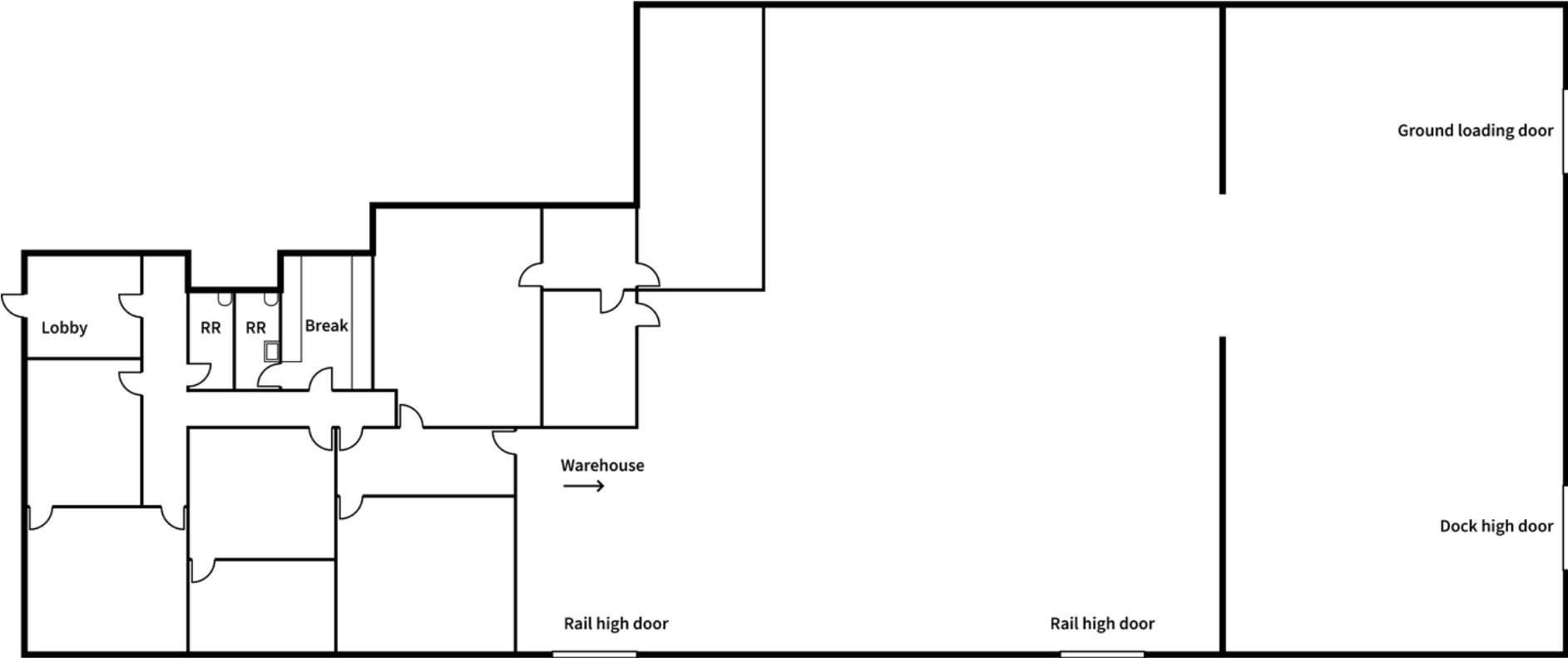
- 5.8 miles from the Hollywood Burbank Airport
- 6.7 miles from the Van Nuys Airport
- 35.4 miles from LAX



# Floorplans

8236 Lankershim Blvd

15,823 Total SF



#### JLL Team

**George Stavaris**

Lic. #01267454

[george.stavaris@jll.com](mailto:george.stavaris@jll.com)

+1 (818) 429 9412

**Brent Weirick**

Lic. #00954803

[brent.weirick@jll.com](mailto:brent.weirick@jll.com)

+1 (818) 389 3003

**Jackson Weirick**

Lic. #02199890

[jackson.weirick@jll.com](mailto:jackson.weirick@jll.com)

+1 (818) 389 8021

Jones Lang LaSalle Brokerage, Inc. License #: 01856260