

# FOR LEASE



## 36800 WOODWARD AVENUE BLOOMFIELD HILLS, MI 48304

### PROPERTY HIGHLIGHTS:

- Prestigious Bloomfield Hills office building
- Suites available up to 1,541 SF
- Office and medical uses
- Spectacular newly landscaped, furnished, and illuminated courtyard
- Recently renovated common areas designed by Neumann Smith architects
- Located on Woodward Avenue with direct access drive from Woodward Ave and Quarton Rd, minutes from downtown Birmingham
- Suites provide windows on 3 sides
- Monument signage available
- Full operational generator
- 180 car parking spaces
- Lease Rate from \$32.00 SF/Gross

The information provided herein along with any attachment(s) was obtained from sources believed to be reliable, however, Friedman Real Estate makes no guarantees, warranties, or representations as to the completeness or accuracy of such information and legal counsel is advised. All information provided is subject to verification and no liability for reliance on such information or errors or omissions is assumed. The presentation of this property is submitted subject to errors, omissions, change of price or conditions, prior sale or lease, or withdrawal without notice. Copyright © 2026 Friedman Real Estate. All rights reserved.

FOR MORE INFORMATION PLEASE CONTACT:



**GLENN N. DESROSIERS**  
Senior Vice President, Brokerage Services  
[glenn.desrosiers@freg.com](mailto:glenn.desrosiers@freg.com)

**248.324.2000**

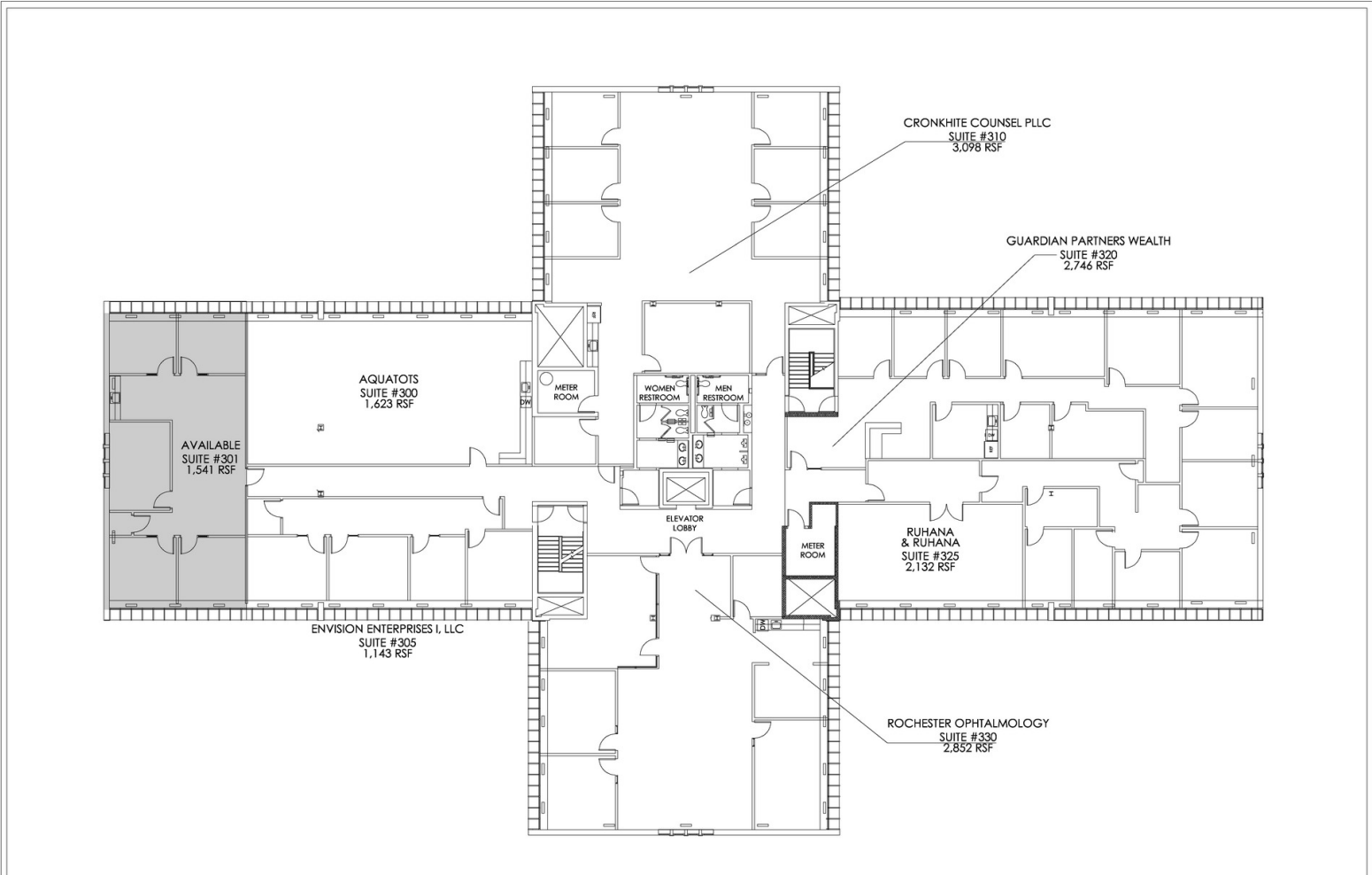
**eCODE 288**



**36800 WOODWARD AVENUE**  
**ADDITIONAL PHOTOS**



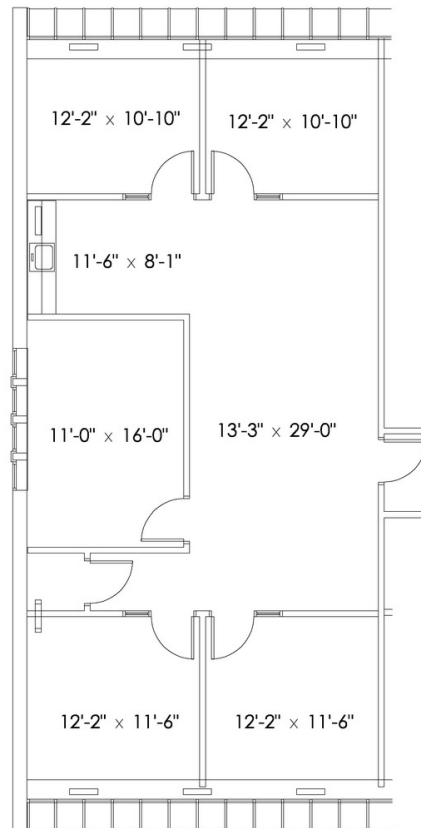
**36800 WOODWARD AVENUE**  
**FLOOR PLATE - THIRD FLOOR**



DO NOT SCALE



**36800 WOODWARD AVENUE**  
**FLOOR PLAN - SUITE 301**



SCALE:  
3/32"=1'-0"

