



FOR LEASE



## THE WALDEN

### Retail Space at Washougal Town Square

1,285 SF | \$35 psf + NNN

#### 1625 Main Street, Washougal, WA 98671

- 1,285 SF of Retail Space at Washougal Town Square
- LEED certification at the Silver level by the U.S. Green Building Council
- Relax, grab a cup of coffee, read the newspaper, shop at local merchants, enjoy a meal, listen to live music in the courtyard, stroll along the river trail, or visit local farmers market

#### WILLIAM AMORIN

Associate Broker | Licensed in WA

360.931.0584 | [william@capacitycommercial.com](mailto:william@capacitycommercial.com)

#### TAMARA J. FULLER, CCIM

Senior Vice President | Licensed in WA

360.946.4832 | [tamara.fuller@capacitycommercial.com](mailto:tamara.fuller@capacitycommercial.com)

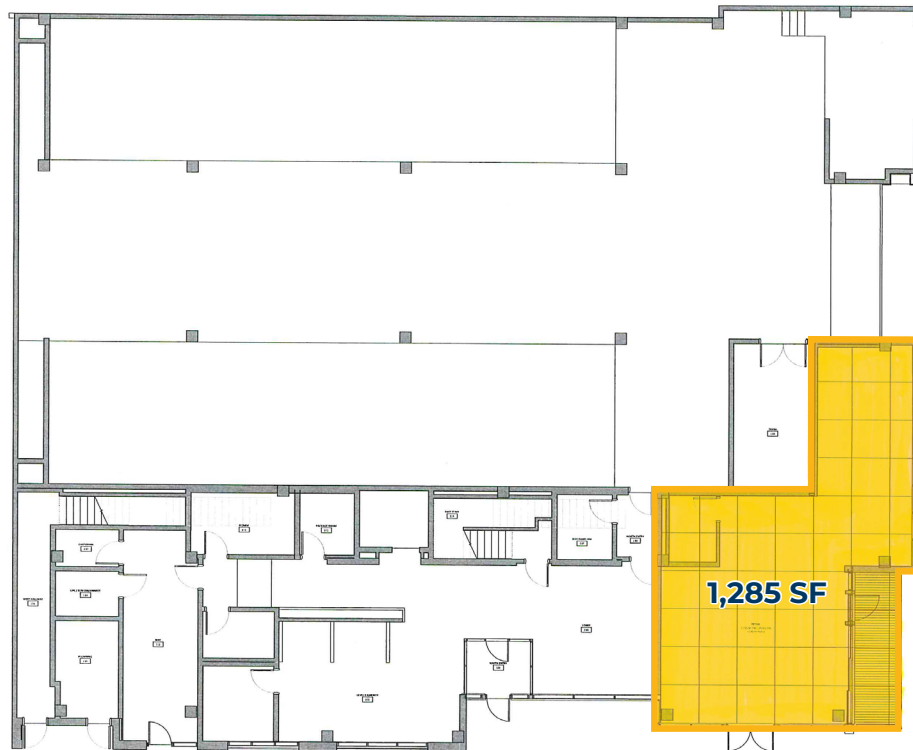
#### ERIC ANDERSON

Senior Vice President | Licensed in WA

360.946.4831 | [eric@capacitycommercial.com](mailto:eric@capacitycommercial.com)



# PROPERTY SUMMARY



## PROPERTY DETAILS

Address	1625 Main Street, Washougal, WA 98671
Available Space	1,285 SF
Suite	TBD
Lease Rate	\$35 psf + NNN
Use Type	Retail
Availability	Now
Space Condition	Vanilla Shell

### Location Features

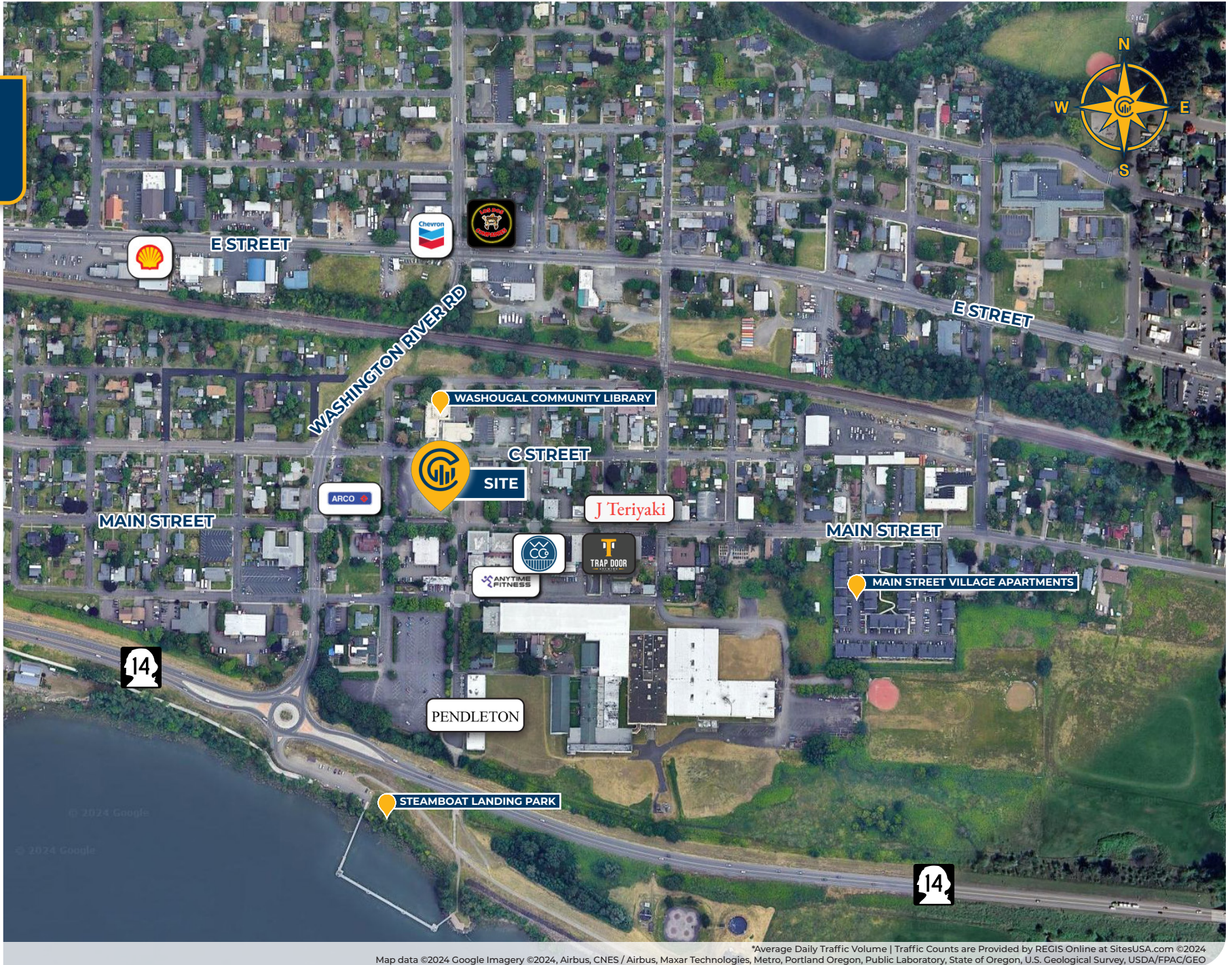
- Located in Downtown Washougal, Washington
- Street Frontage Available

### Nearby Highlights

- 2 Rivers Bar & Grill
- Evergreen Marketplace
- Forest Moon Yoga
- J Teriyaki
- Los Dos Compadres II
- Miere Catering
- Parker's Landing Waterfront
- Pendleton
- Smeads Pub
- Steamboat Landing Park
- Trap Door Brewing
- Washougal Coffee Co
- Washougal Community Library



# LOCAL AERIAL MAP



Map data ©2024 Google Imagery ©2024, Airbus, CNES / Airbus, Maxar Technologies, Metro, Portland Oregon, Public Laboratory, State of Oregon, U.S. Geological Survey, USDA/FPAC/GEO \*Average Daily Traffic Volume | Traffic Counts are Provided by REGIS Online at SitesUSA.com ©2024